



PICSA[®]
Bombas y Sistemas

HD4Q

SOLIDS HANDLING PUMPS DRY PIT PUMPS



Dependability

The Hydromatic® pump's oil-filled motor keeps the windings cool, eliminates moisture and permanently lubricates the bearings to provide reliable pumping service.

First, the oil bath keeps the motor and bearings cool by dissipating heat and maintaining the correct operating temperature. The oil transfers heat generated in the motor windings to the housing where it is dissipated.

Second, the oil bath locks out airborne moisture contamination which destroys motors and bearings. Air carries moisture that condenses with temperature changes and causes premature motor and bearing failure.

Third, the oil bath permanently lubricates the bearings, which minimizes heat and flushes contaminants away from bearing races.

Heat and contaminants cause grease breakdown that leads to premature failure of grease-packed bearings supplied by other manufacturers. Oil-filled motors ensure dependable, reliable service!

You get long pump life because the oil-filled motor dissipates heat from the windings, through the oil, to the outer housing.

Reliability

The moisture sensor saves money and decreases downtime by allowing you to take corrective action before an expensive bearing or motor failure occurs.

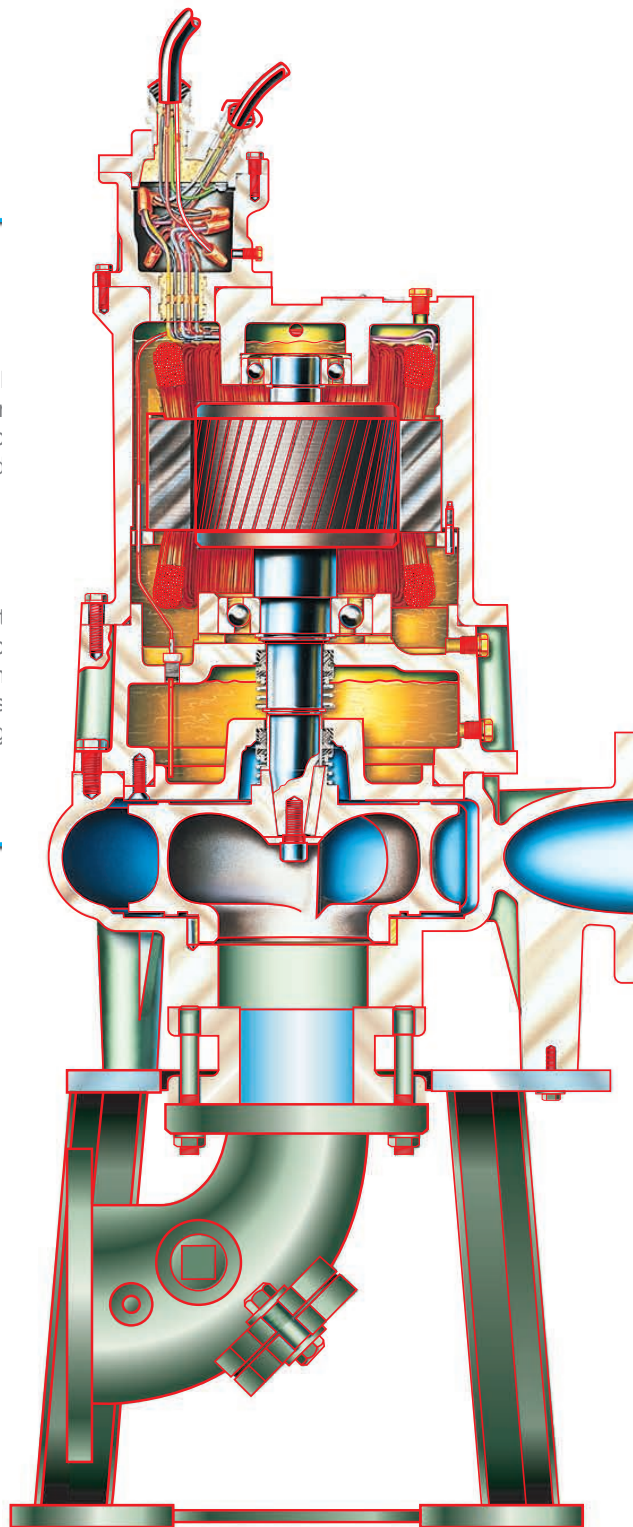
Hydromatic pumps incorporate an internal moisture sensor that detects the presence of moisture in the oil chamber.

The sensor's signal to the warning system lets you know that the lower seal is beginning to leak.

Some manufacturers put a moisture sensor in the motor area which means moisture is detected after it begins affecting the bearings and motor. Hydromatic's lower seal moisture sensor allows you to perform immediate maintenance instead of reacting to an emergency breakdown. The internal moisture sensor saves you money and decreases downtime.

Hydromatic supplies necessary plumbing to connect the water jacket to the suction and discharge piping. This plumbing includes ball valves that allow easy removal of the water jacket for periodic cleaning without shutting down the system.

Características bomba HD4Q



A

Box: Two epoxy barriers and a fitting prevent water of the motor area, assuring long operation. Additionally, epoxy and stripped leads positively "lock" from the cable.

B

Bearings: Heavy-duty ball bearings, upper (radial) and lower (thrust), are submerged in oil to provide permanent lubrication and ensure long service life.

E

Shaft: Stainless steel shaft eliminates corrosion and fatigue to give longer pump life. Minimum shaft overhang decreases deflection and increases bearing and seal life.

F

Impeller: Two-vane solids handling impellers provide the most energy efficient design. Pump-out vanes on the top shroud prevent the buildup of materials in the seal area and extend the life of the thrust bearing by significantly reducing axial thrust.

C

Motor: Hydromatic uses "Class H" insulation for long life. Three-phase motors are suitable for use with VFD. Oil-filled motor efficiently dissipates heat and locks out damaging moisture so you receive reliable long service.

D

Seals: Dual seal system operates in an oil chamber to provide long pump service life.

G

Outlet: Pump is provided with a cast iron suction elbow bolted directly to the pump flange. A clean-out hole is provided with a removable cover of the possible size.

Pump Benefits

Low Maintenance

Hydromatic pumps are virtually maintenance free because the oil-filled design keeps the motor and bearings both fully lubricated and operating in the proper temperature range for very long life. You perform periodic maintenance for bearings and seals less often than required by other manufacturers

Cooling Fins / Water Jackets (Optional)

When additional cooling is required, Hydromatic can supply pumps with cooling fins or water jackets. Both are designed to keep the motor temperature in the normal operating range.

Installations

Municipal

- Wastewater transfer
- Wastewater treatment plants
- Wastewater lift stations
- Subdivisions
- Airports
- Storm water

Industrial

- Wastewater
- Sump
- Spray wash

Commercial

- Building wastewater systems
- Wastewater
- Hospitals
- Hotels
- Apartments
- Schools
- Churches
- Aniversities
- Campgrounds
- Amusement parks

Benefits

- Field-proven
- Reliable, long life equipment
- Quick delivery
- Easy-to-install
- Low operating costs
- Completely field serviceable
- Easy-to-service
- Energy efficient
- Less maintenance

Oficinas Corporativas y Planta

Amacuzac 176 Col. San Pedro Iztacalco, Delegación Iztacalco, CDMX, C.P. 08220 Tel. 55 56 98 34 01
e-mail: atencionaclientes@picsabombas.com.mx

SUCURSALES

CDMX • Monterrey • Guadalajara • León • Cancún

Queda prohibida la reproducción total o parcial de este material por cualquier medio sin el previo y expreso consentimiento por escrito del representante legal de PICA Bombas y Sistemas.



PICSA[®]
Bombas y Sistemas