

MYERS® ME40AG SERIES

The Myers ME40AG series submersible pumps are engineered specifically for agricultural cooling systems. Our modified design features an enclosed two-vane impeller to deliver optimal flow and head. To withstand harsh sump conditions, the pumps are constructed of the highest quality materials. An ME40AG pump will provide years of reliable service.

APPLICATIONS

Agricultural cooling systems, sump drainage, water transfer

SPECIFICATIONS

Capacities – 70 GPM (265 LPM)
Shut-off Head – 33' (10 m)
Operation – Manual or automatic
Solids Handling – 3/4" (19 mm)
Liquids Handling – Sump or recirculated water
Intermittent Liquid Temperature – Up to 140°F (60°C)
Motor/Electrical Data – 4/10 HP, 1650 RPM, permanent split capacitor type, 115V, 8A, 1Ø, 50/60Hz; 230V, 4A, 1Ø, 50/60Hz
Acceptable pH Range – 6-9
Specific Gravity – .9-1.1
Viscosity – 28-35 SSU
Discharge, NPT – 1-1/2" (38.1 mm)
Housing – Cast iron, class 30, ASTM 48
Motor Bearings – Ball bearing-lower, top-sleeve
Impeller – Enclosed, engineered thermoplastic
Impeller Wear Ring – 304 SST
Volute – Thermoplastic
Mechanical Shaft Seal – Type 6, carbon and ceramic
Fasteners – 300 series SST
Power Cord – 10' (automatic), 20' (manual); 16/3, SJTW
Min. Sump Diameter – 24" (61 cm)



FEATURES

Efficient Dosing

The two-vane impeller provides the flow and head required for demanding dosing systems and sump applications

Powerful Starts

High-torque, permanent split capacitor (PSC) motor; no starting switches or relays to wear out

Rugged and Cool

Rugged-built, oil-filled motor for continuous bearing lubrication and maximum heat dissipation

Water-tight Fit

Positive sealing, quick-connect float and switch cords make replacement easy

Improved Sealing

Long, flexible Type 6 seal provides high-pressure sealing with improved seal face protection by location

Automatically Better

Field-tested, wide-angle, mercury-free mechanical float switch provides maximum drawdown (automatic models only)

Dual Operation

Automatic float switch or manual operation by plugging directly into outlet

Thermal Overload

Heat sensor overload protection with automatic reset when motor cools to a safe operating temperature

Pump Protection

Suction screen included to prevent debris from entering pump

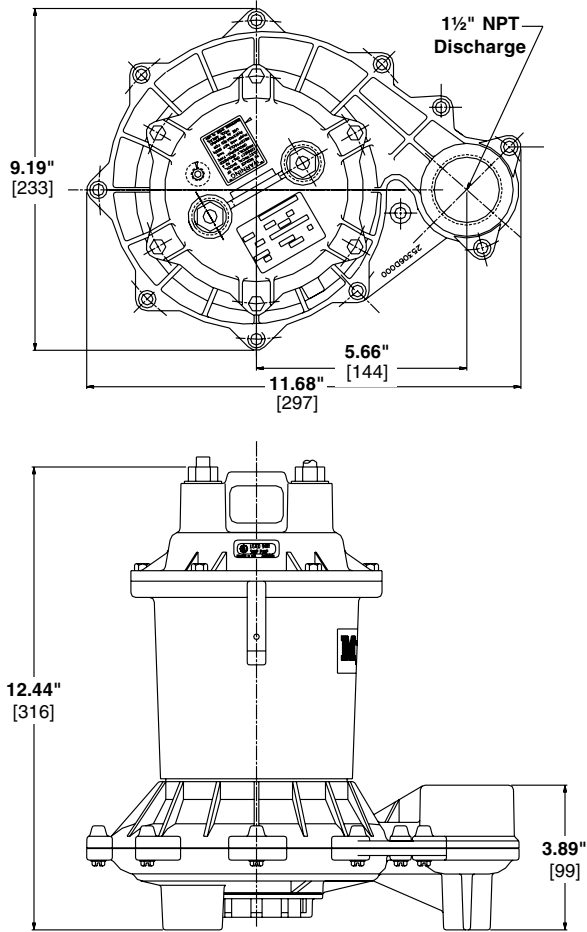
ORDERING INFORMATION

Catalog Number	HP	Volts	Phase/Cycles	Amps	Discharge Size	Switch Type	Cord Length	Approx. Wt. Lbs.
ME40AG-11	4/10	115	1/50 1/60	8	1-1/2"	Manual	20'	27
ME40AG-21	4/10	230	1/50 1/60	4	1-1/2"	Manual	20'	27
ME40AGP-11	4/10	115	1/50 1/60	8	1-1/2"	Tethered Automatic*	20'	27
ME40AGP-21	4/10	230	1/50 1/60	4	1-1/2"	Tethered Automatic*	20'	27

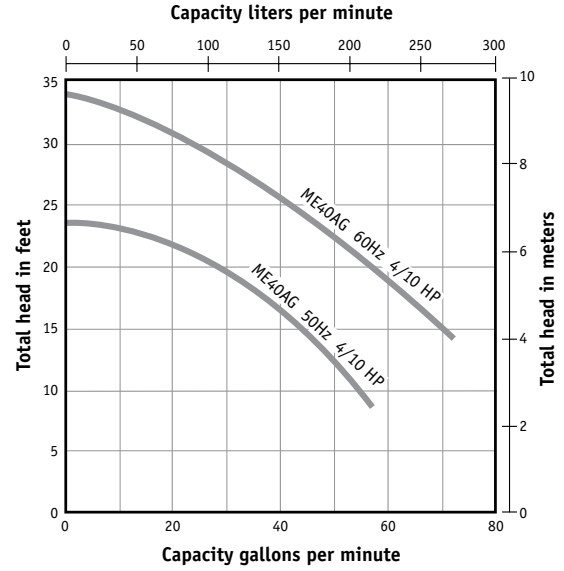
*Piggyback

MYERS® ME40AG SERIES

DIMENSIONS



PUMP PERFORMANCE



USA
293 WRIGHT STREET, DELAVAN, WI 53115 WWW.FEMYERS.COM
PH: 888-987-8677 ORDERS FAX: 800-426-9446

CANADA
490 PINEBUSH ROAD, UNIT 4, CAMBRIDGE, ONTARIO N1T 0A5
PH: 800-363-7867 ORDERS FAX: 888-606-5484

Because we are continuously improving our products and services, Pentair reserves the right to change specifications without prior notice.