

Performance Curves for the 430 Series

MODEL/SIZE	R.P.M.	CATALOG PAGE	PDF PAGE
1-1/2 x 3 x 9	3500/1750	401	2
1-1/2 x 3 x 11	3550/1750	402	3
2 x 4 x 9	3500/1750	403	4
2 x 4 x 11	3550/1750	404	5

1-1/2 x 3 x 9 SERIES 430

ENCLOSED IMPELLER

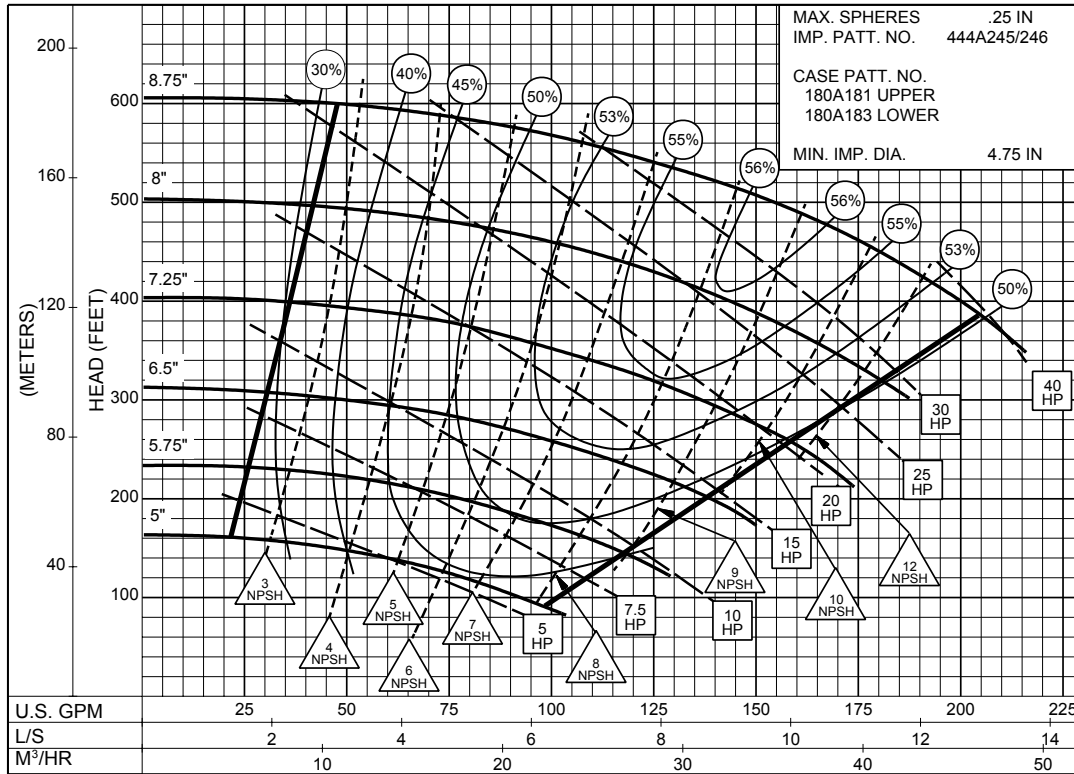
Section **430** Page **401**

Date **January 2001**

Supersedes Section 430 Page 401

Dated May 1995

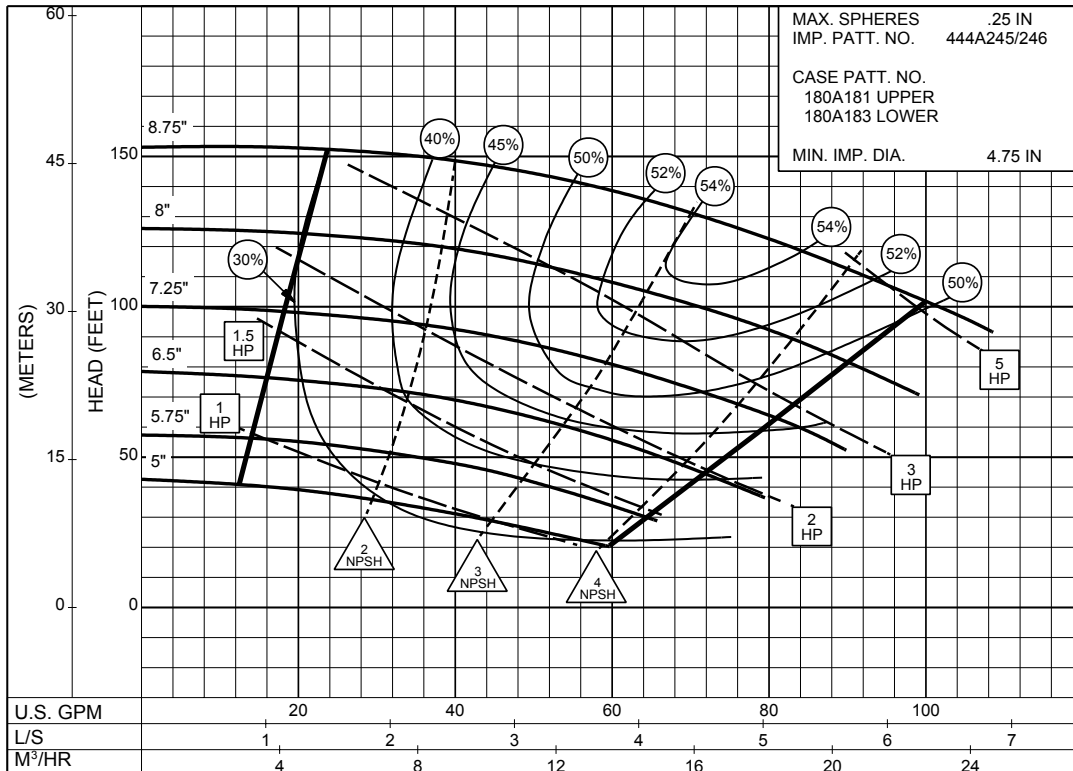
SIZE : 1-1/2x3x9 TYPE : 430 IMPELLER : Enclosed R. P. M. : 3500



3500
R.P.M

1PC-116118A

SIZE : 1-1/2x3x9 TYPE : 430 IMPELLER : Enclosed R. P. M. : 1750



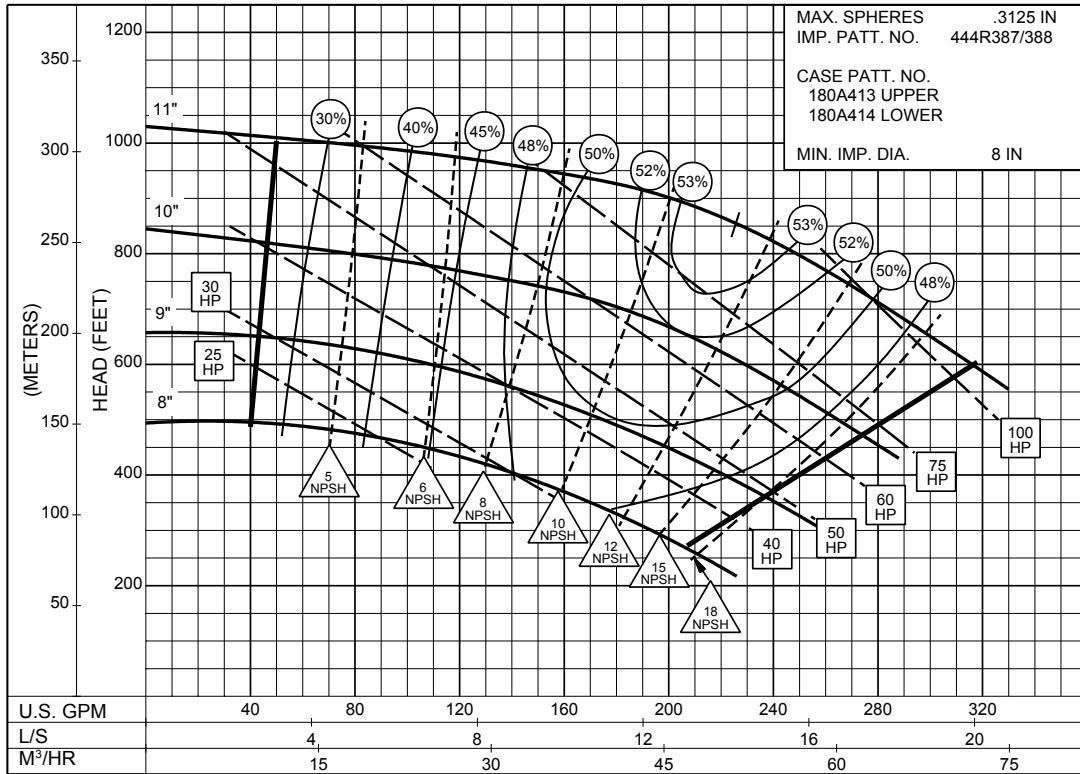
1750
R.P.M

1PC-116119A

ENCLOSED IMPELLER

Supersedes Section 430 Page 402
 Dated May 1995

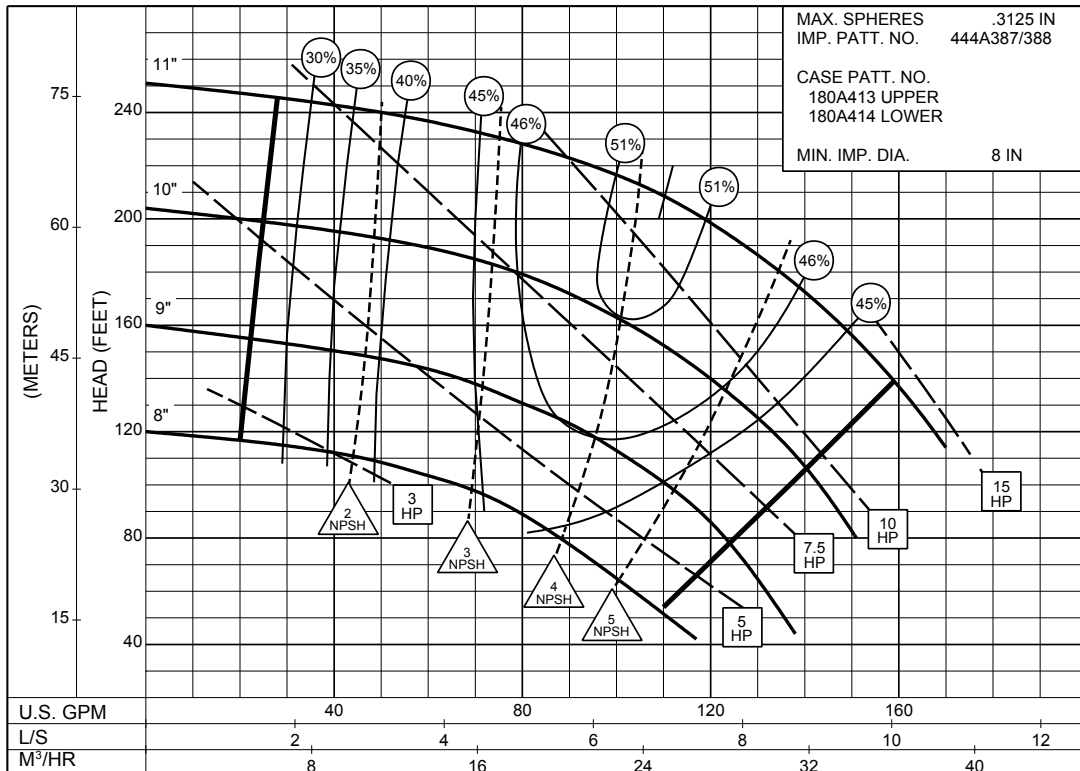
SIZE : 1-1/2x3x11 TYPE : 431 IMPELLER : Enclosed R. P. M. : 3550



1PC-158883

**3550
R.P.M**

SIZE : 1-1/2x3x11 TYPE : 431 IMPELLER : Enclosed R. P. M. : 1750



1PC-158908

**1750
R.P.M**

2 x 4 x 9 SERIES 430

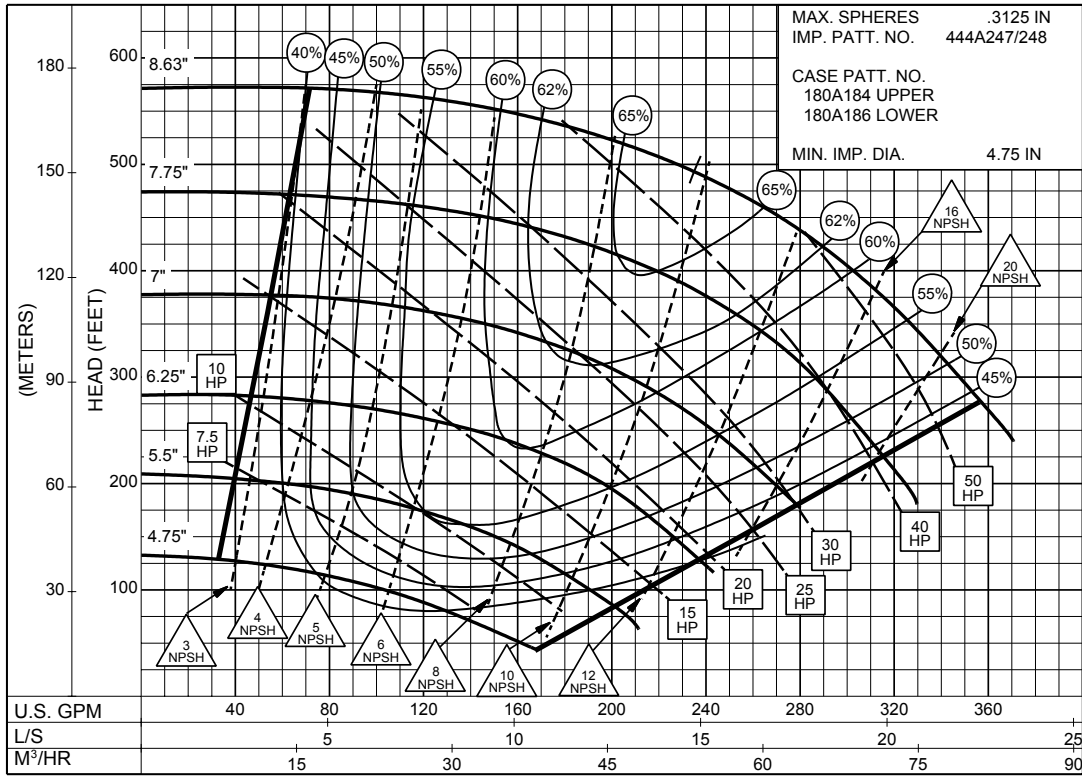
ENCLOSED IMPELLER

SIZE : 2x4x9

TYPE : 430

IMPELLER : Enclosed

R. P. M. : 3500



1PC-116120A

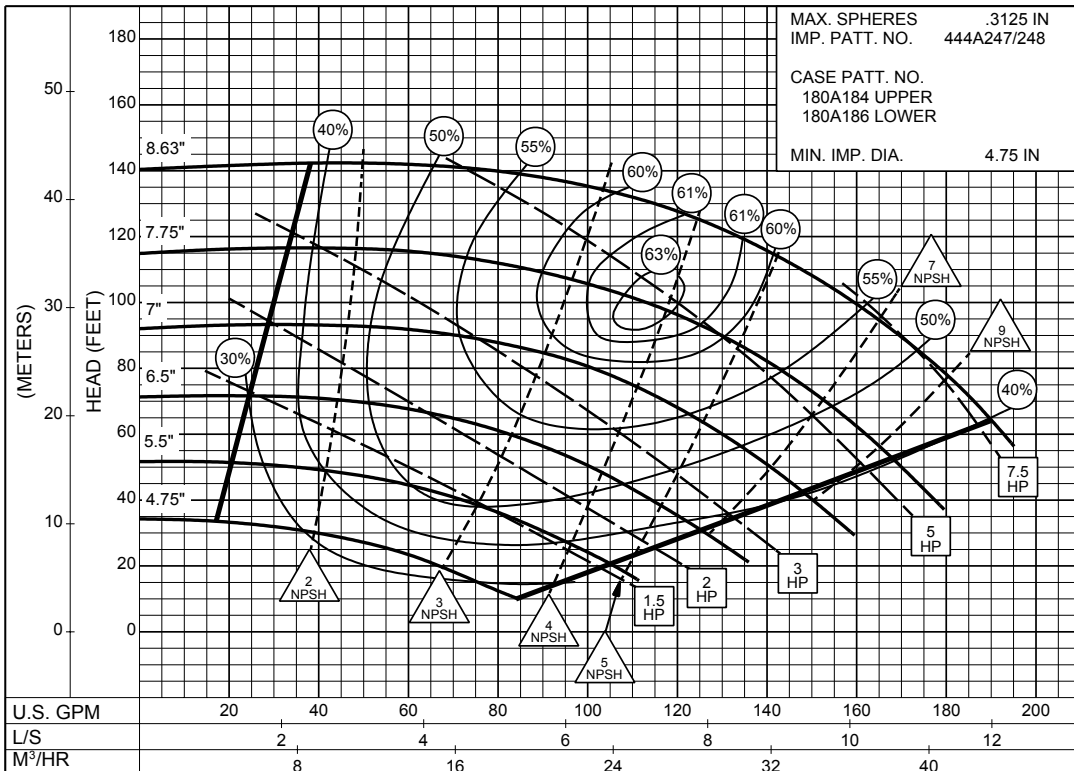
3500
R.P.M

SIZE : 2x4x9

TYPE : 430

IMPELLER : Enclosed

R. P. M. : 1750



1PC-116121A

1750
R.P.M

2 x 4 x 11 SERIES 430

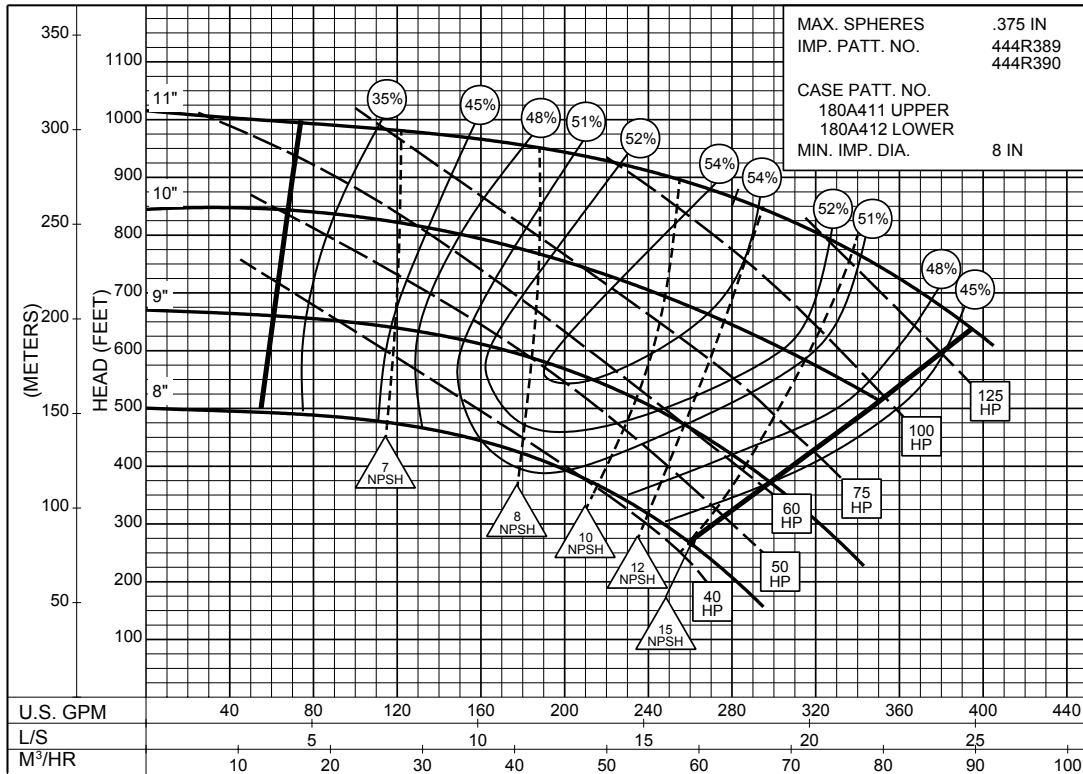
ENCLOSED IMPELLER

SIZE : 2x4x11

TYPE : 431

IMPELLER : ENCLOSED

R. P. M. : 3550



PC-158291

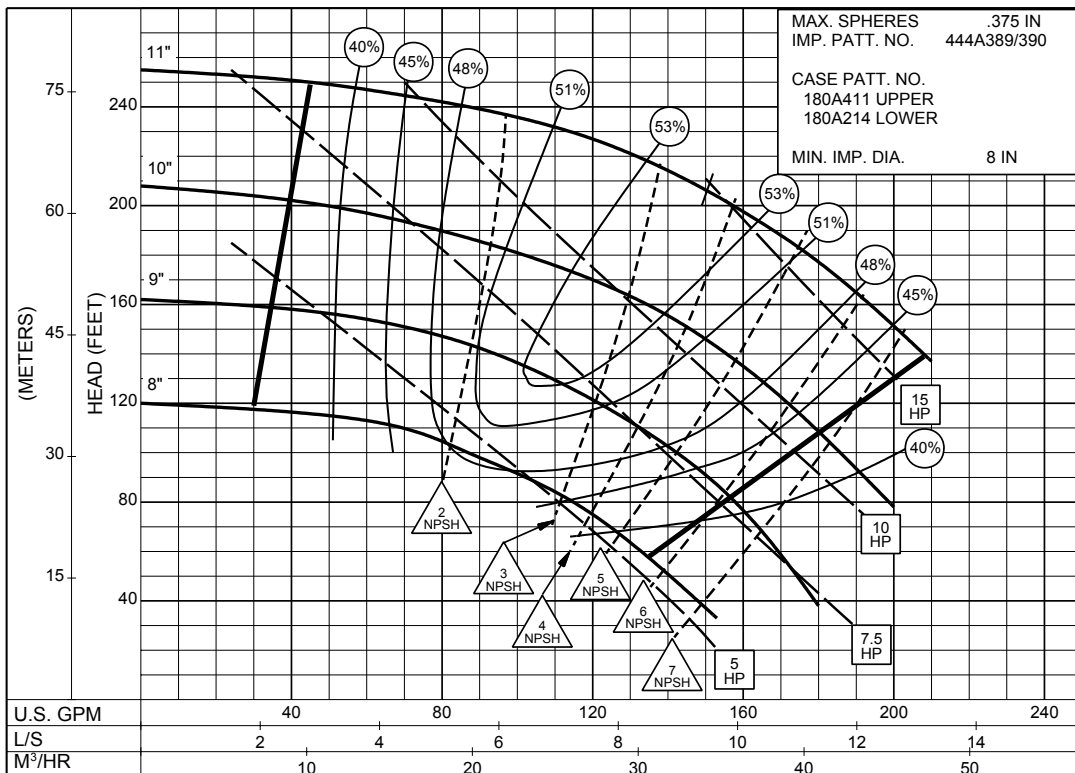
3550
R.P.M

SIZE : 2x4x11

TYPE : 430

IMPELLER : Enclosed

R. P. M. : 1750



PC-158292

1750
R.P.M