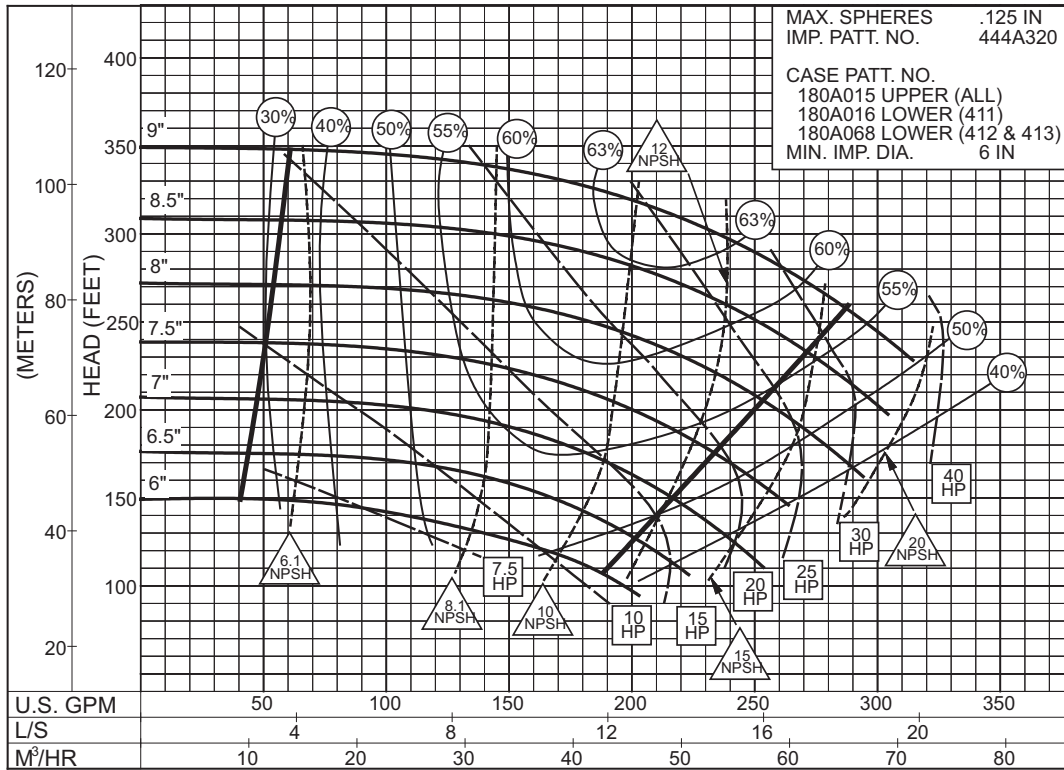


# 2 x 2-1/2 x 9 SERIES 410

ENCLOSED IMPELLER

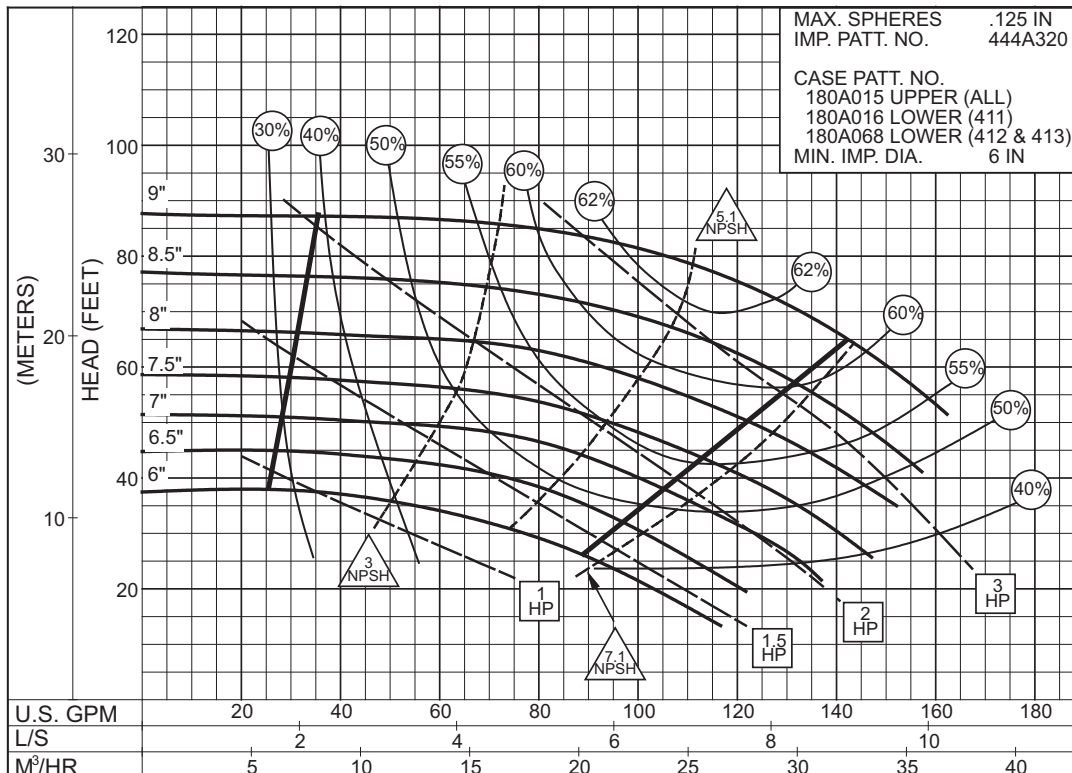
**SIZE : 2x2-1/2x9 TYPE : 410 IMPELLER : Enclosed R. P. M. : 3550**



**2PC-117351A**



**SIZE : 2x2-1/2x9 TYPE : 410 IMPELLER : Enclosed R. P. M. : 1775**



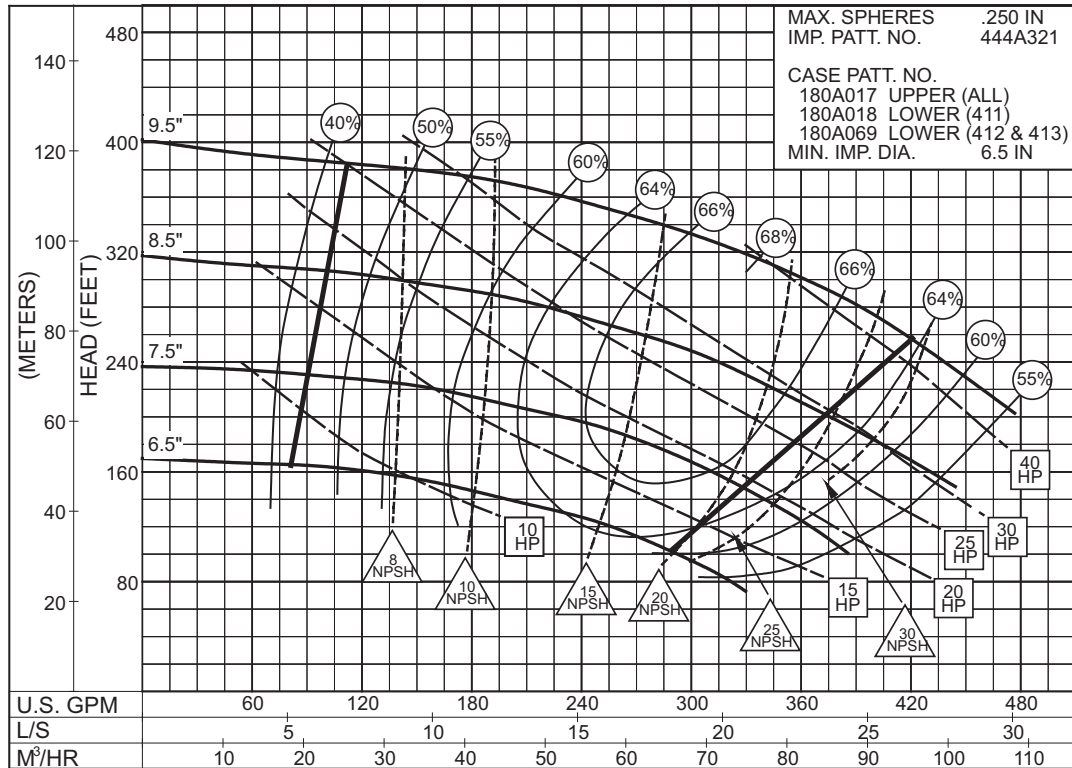
**2PC-117352A**



**2 x 2-1/2 x 10**  
**SERIES 410**

ENCLOSED IMPELLER

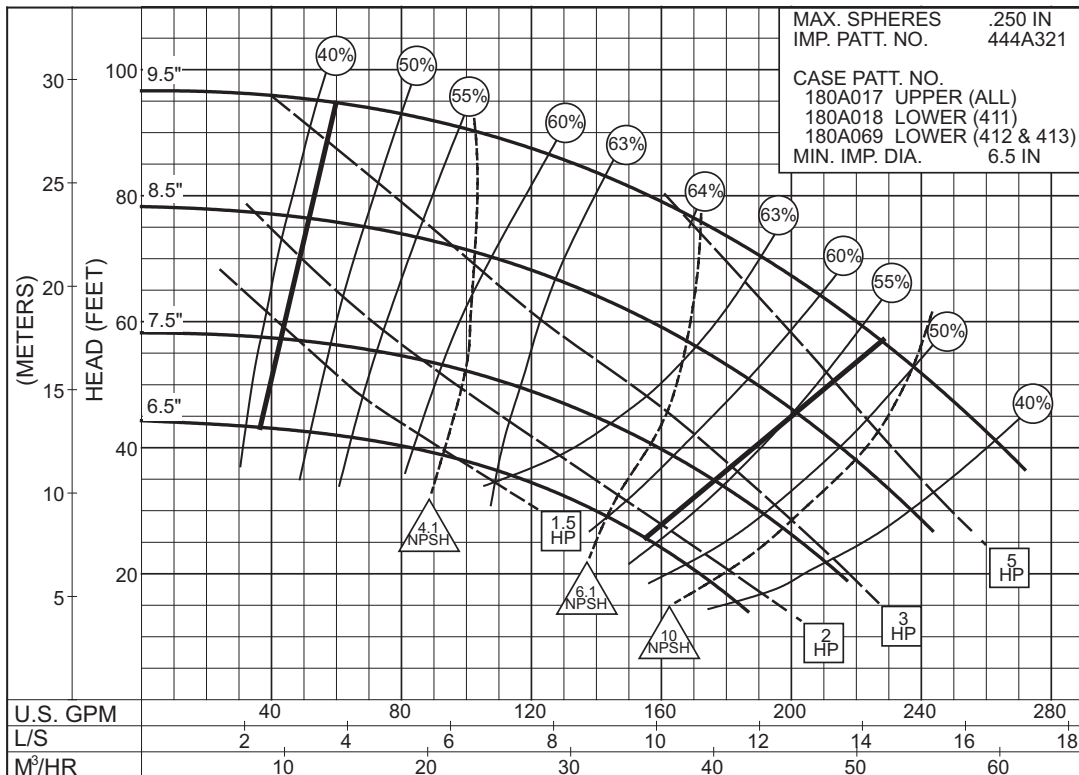
**SIZE : 2X2-1/2X10      TYPE : 410      IMPELLER : Enclosed R. P. M. : 3550**



**2PC-117353B**

**3550**  
RPM

**SIZE : 2X2-1/2X10      TYPE : 410      IMPELLER : Enclosed R. P. M. : 1775**



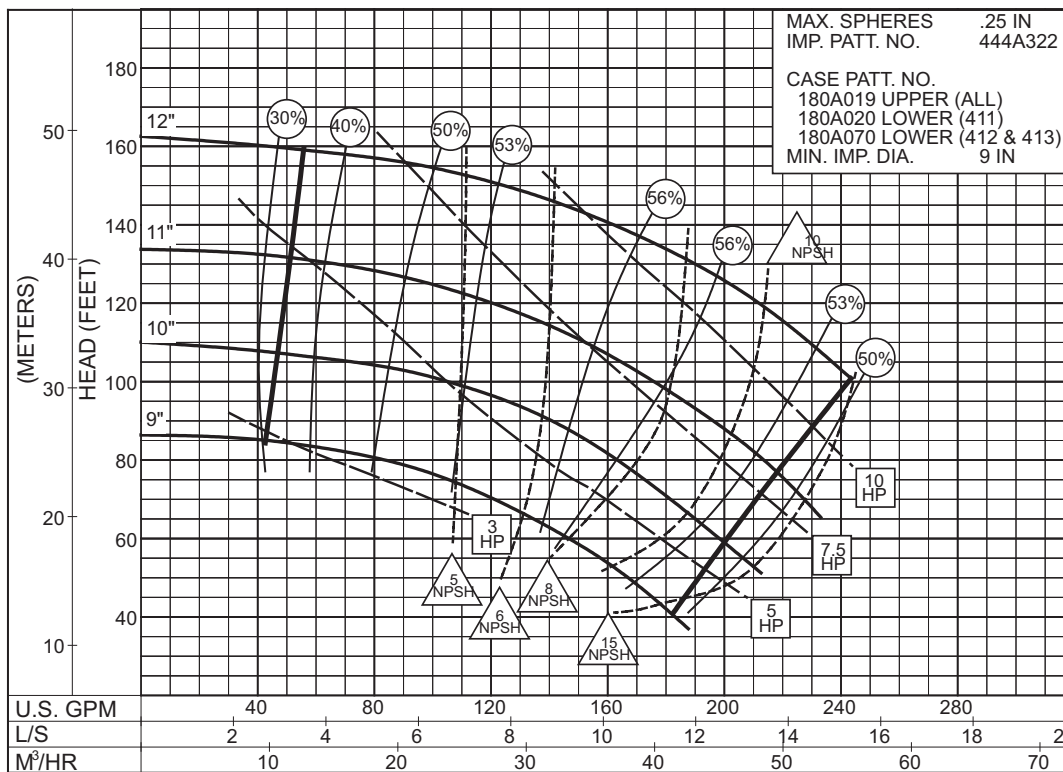
**2PC-117354B**

**1775**  
RPM

**2 x 2-1/2 x 12**  
**SERIES 410**

ENCLOSED IMPELLER

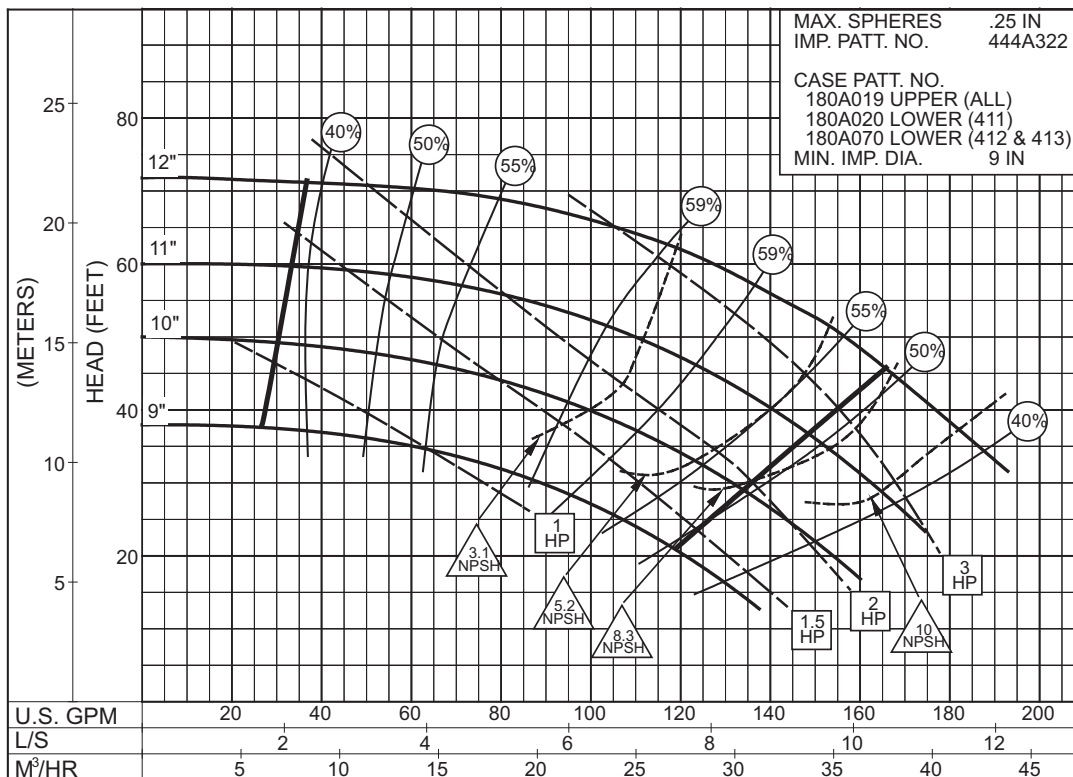
**SIZE : 2x2-1/2x12 TYPE : 410 IMPELLER : Enclosed R. P. M. : 1775**



**2PC-117355A**

**1775**  
RPM

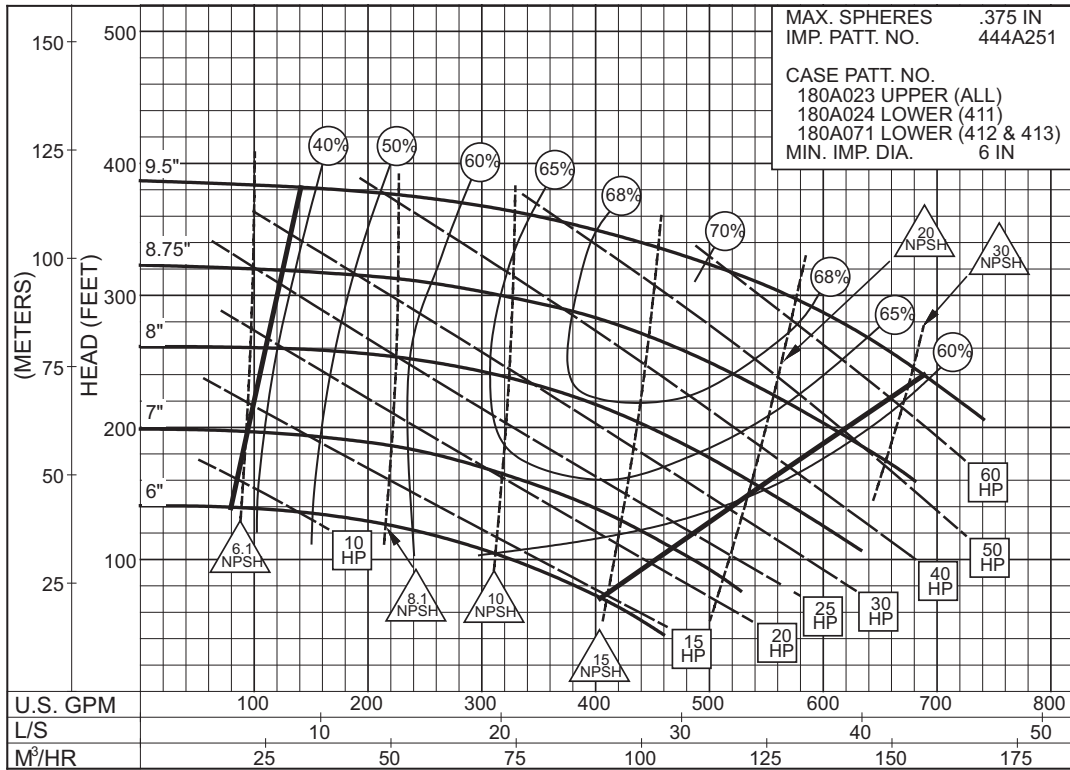
**SIZE : 2x2-1/2x12 TYPE : 410 IMPELLER : Enclosed R. P. M. : 1180**



**2PC-117356A**

**1180**  
RPM

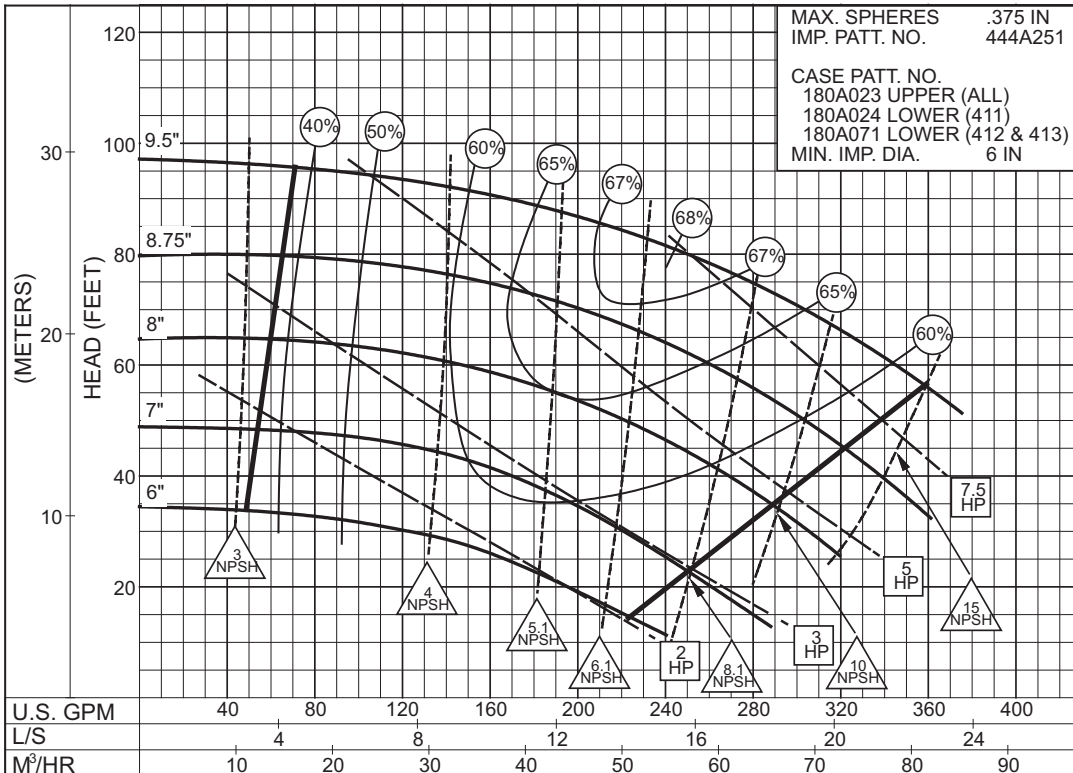
**SIZE : 2-1/2x3x10B TYPE : 410 IMPELLER : Enclosed R. P. M. : 3550**



**2PC-117357B**

**3550**  
RPM

**SIZE : 2-1/2x3x10B TYPE : 410 IMPELLER : Enclosed R. P. M. : 1775**



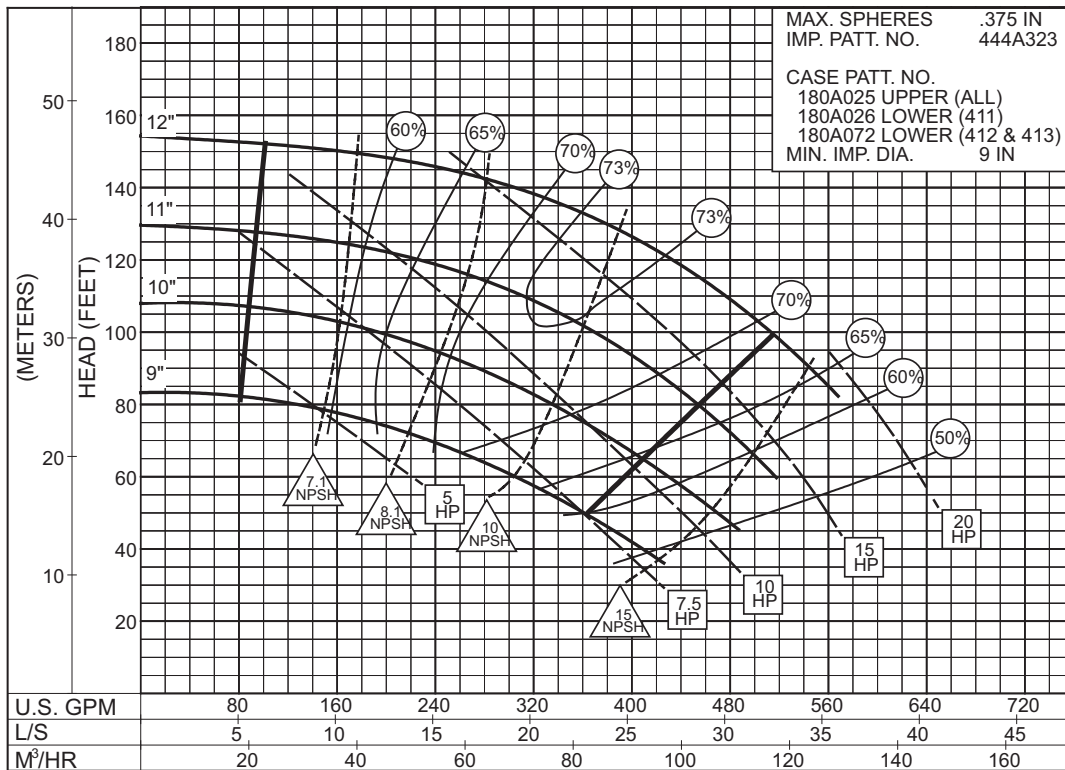
**2PC-117358B**

**1775**  
RPM

# 2-1/2 x 3 x 12 SERIES 410

ENCLOSED IMPELLER

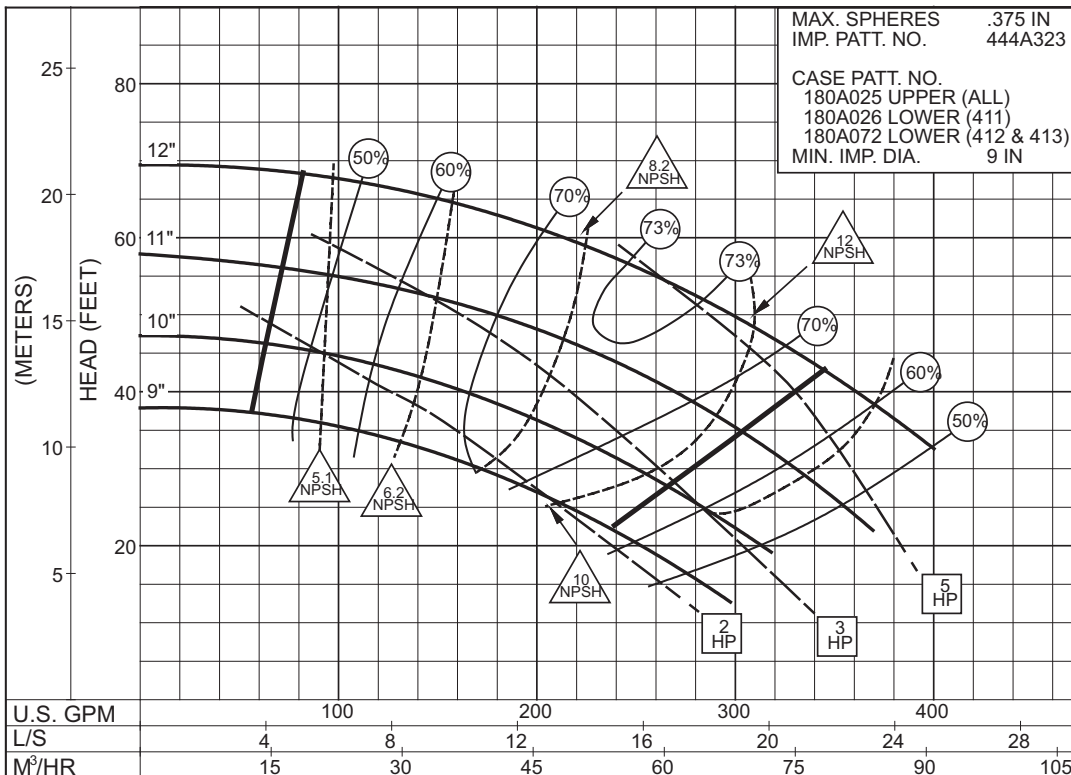
**SIZE : 2-1/2x3x12      TYPE : 410      IMPELLER : Enclosed R. P. M. : 1775**



**2PC-117359A**



**SIZE : 2-1/2x3x12      TYPE : 410      IMPELLER : Enclosed R. P. M. : 1180**



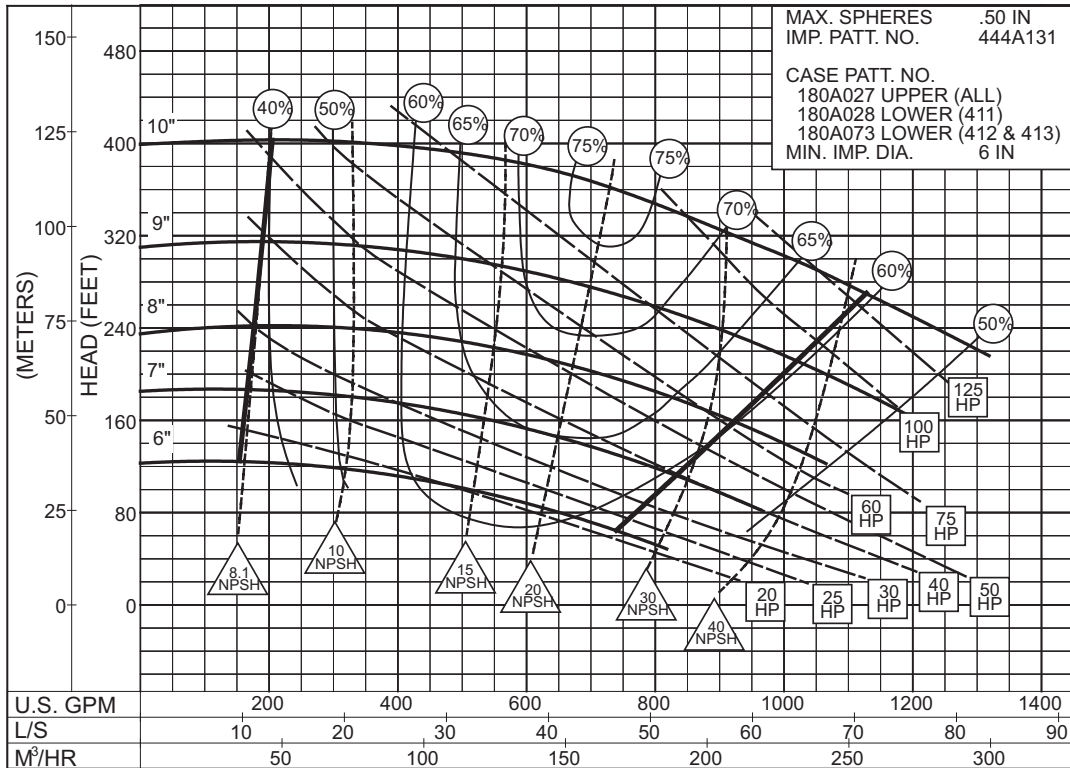
**2PC-117360A**



# 3 x 4 x 10B SERIES 410

ENCLOSED IMPELLER

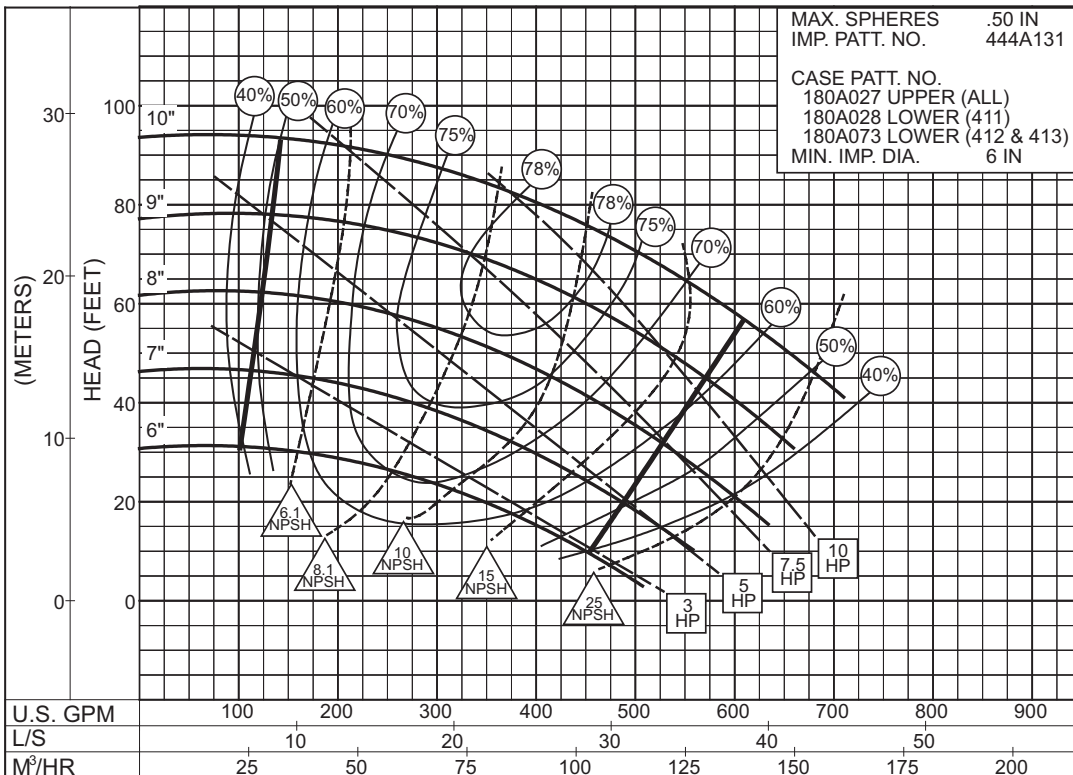
**SIZE : 3x4x10B      TYPE : 410      IMPELLER : Enclosed R. P. M. : 3550**



**2PC-124752A**

**3550**  
RPM

**SIZE : 3x4x10B      TYPE : 410      IMPELLER : Enclosed R. P. M. : 1775**



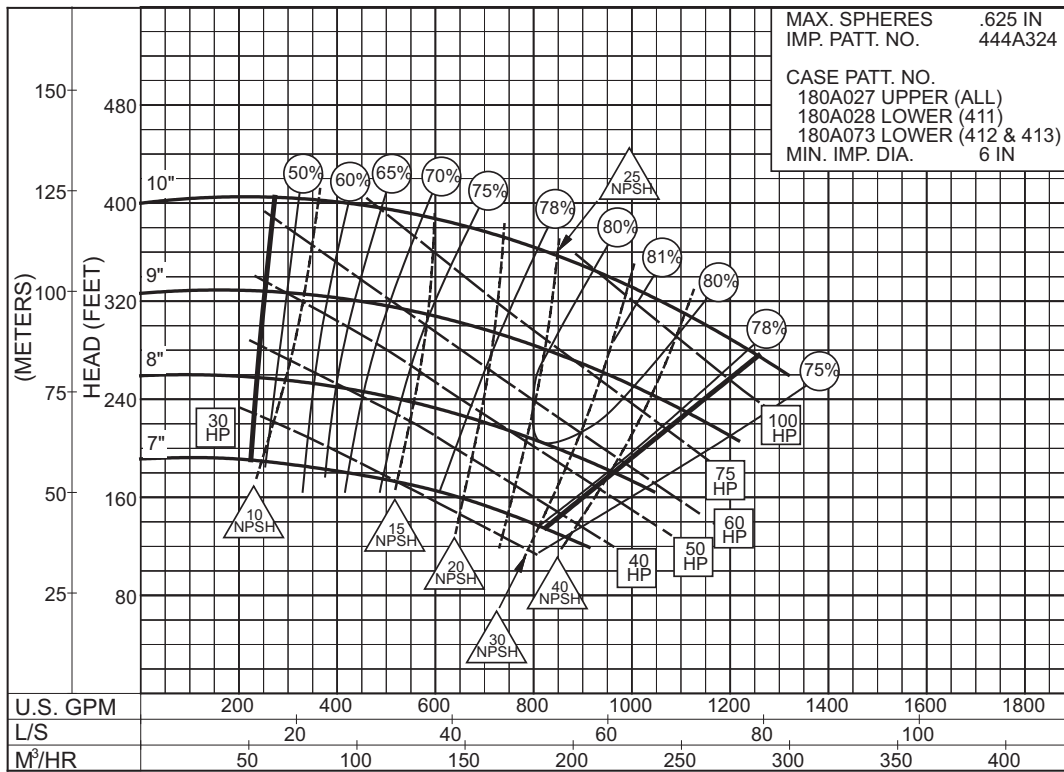
**2PC-124760A**

**1775**  
RPM

# 3 x 4 x 10C SERIES 410

ENCLOSED IMPELLER

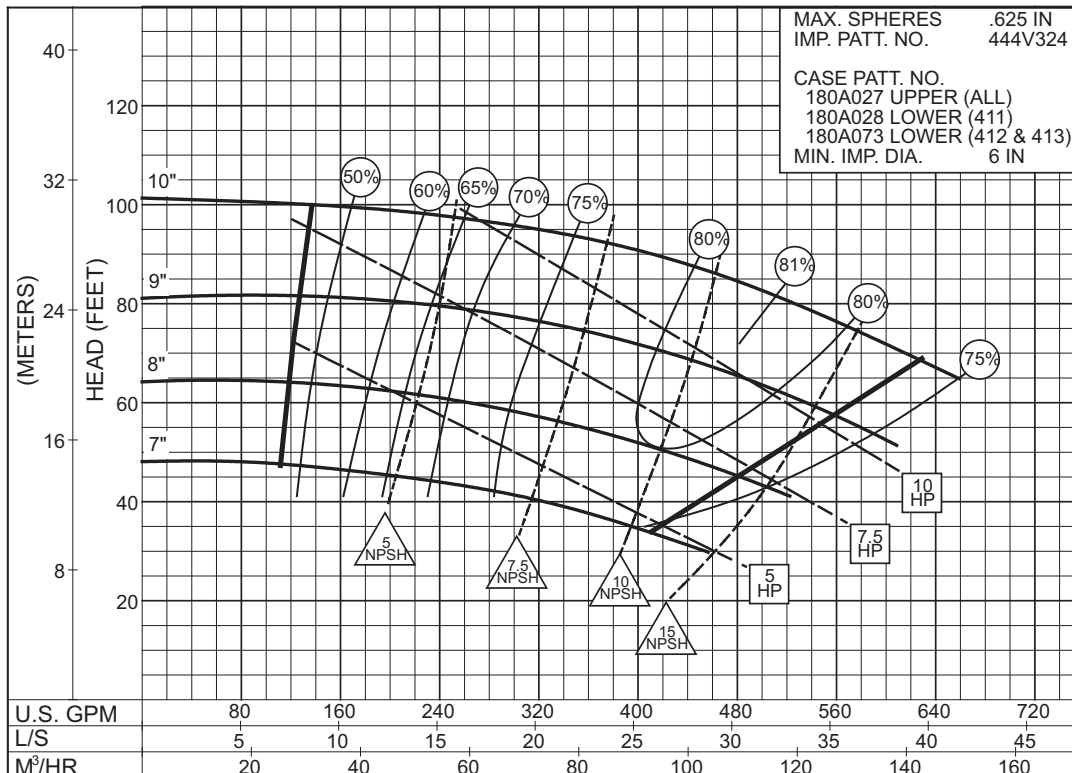
**SIZE : 3x4x10C      TYPE : 410      IMPELLER : Enclosed R. P. M. : 3550**



**2PC-146727A**

**3550**  
RPM

**SIZE : 3x4x10C      TYPE : 410      IMPELLER : Enclosed R. P. M. : 1775**



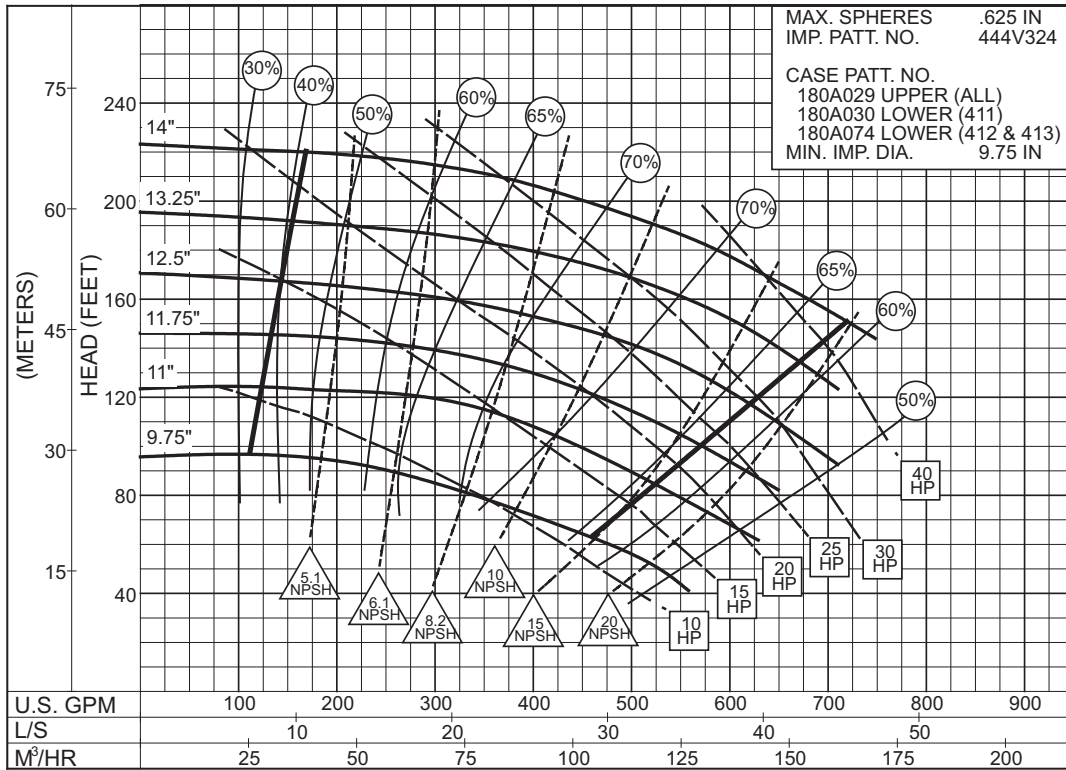
**2PC-146728A**

**1750**  
RPM

# 3 x 4 x 14 SERIES 410

ENCLOSED IMPELLER

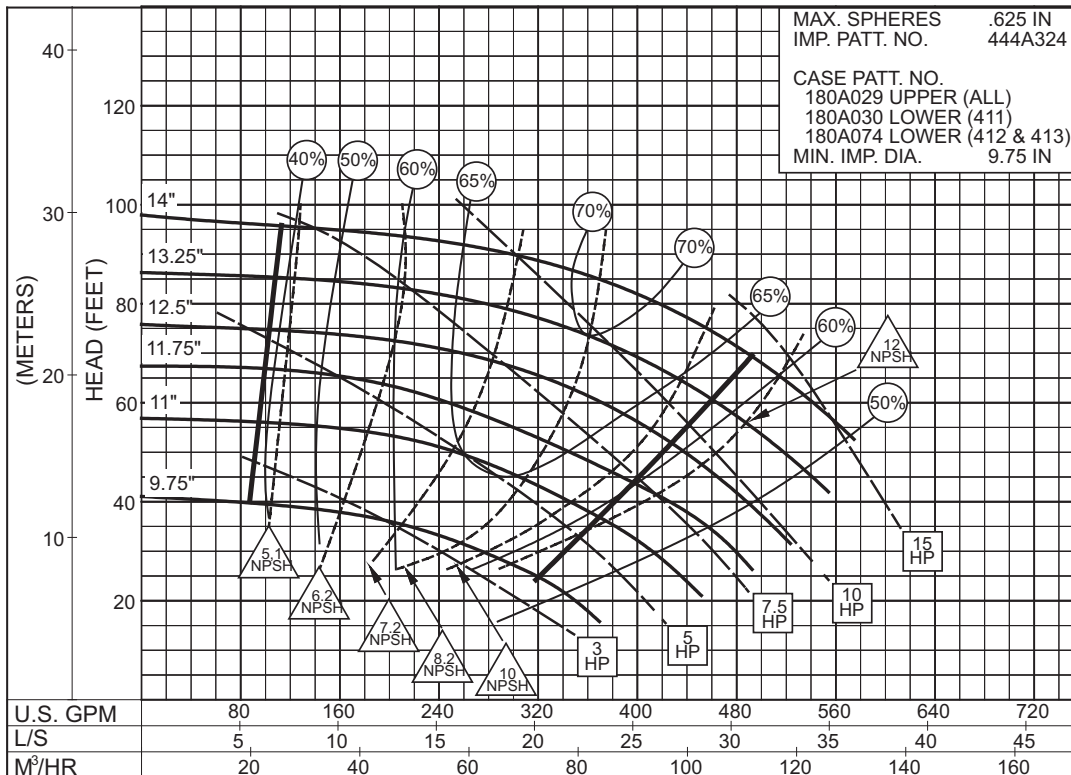
**SIZE : 3x4x14      TYPE : 410      IMPELLER : Enclosed R. P. M. : 1775**



**2PC-117363A**

**1775**  
RPM

**SIZE : 3x4x14      TYPE : 410      IMPELLER : Enclosed R. P. M. : 1180**



**2PC-117364A**

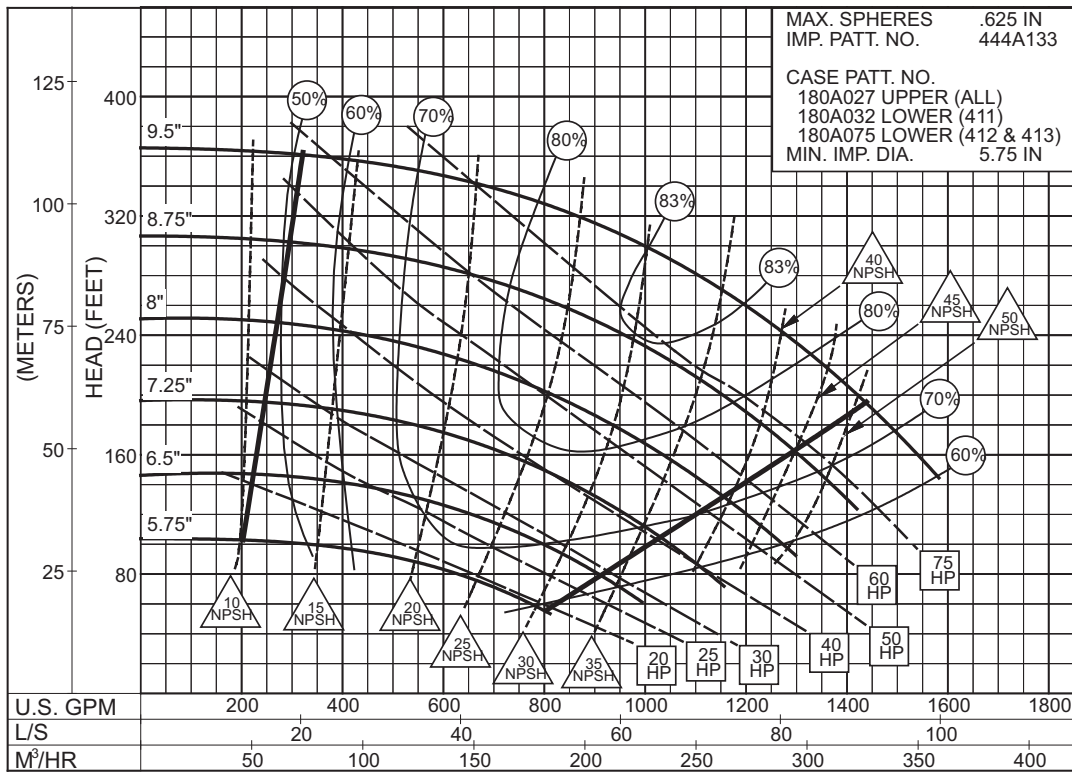
**1180**  
RPM



# 4 x 5 x 10B SERIES 410

ENCLOSED IMPELLER

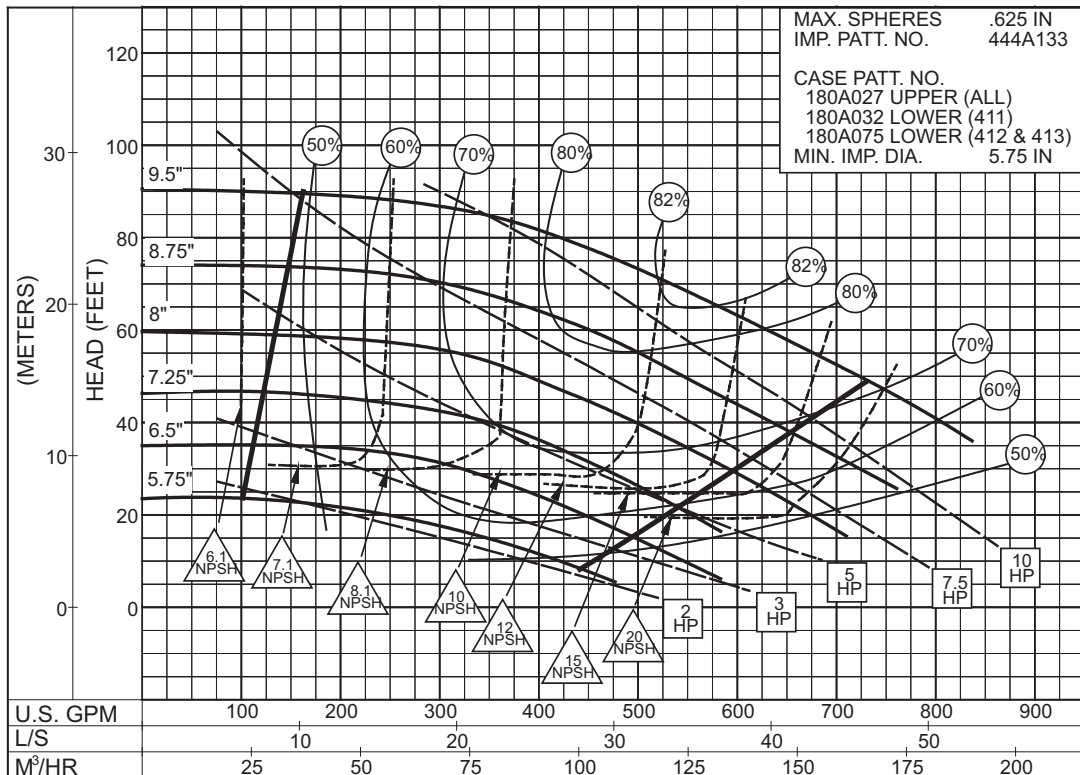
**SIZE : 4x5x10B      TYPE : 410      IMPELLER : Enclosed R. P. M. : 3550**



**2PC-117367A**

**3550**  
RPM

**SIZE : 4x5x10B      TYPE : 410      IMPELLER : Enclosed R. P. M. : 1775**



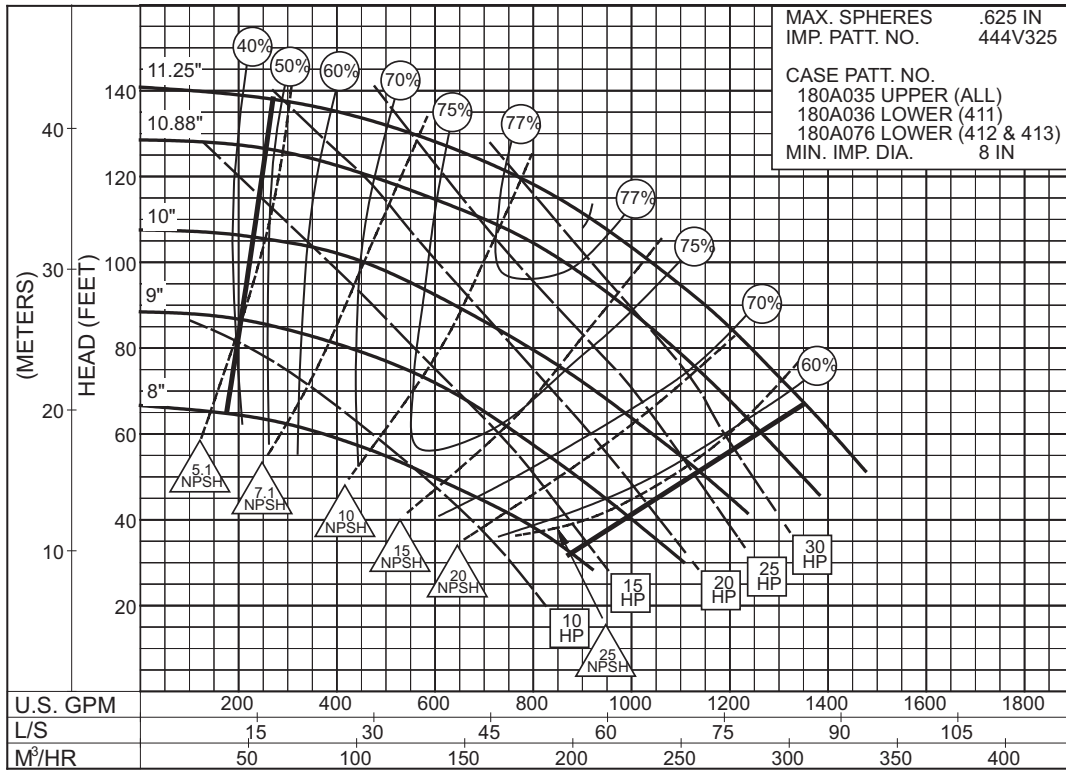
**2PC-117368A**

**1775**  
RPM

**4 x 5 x 11A**  
**SERIES 410**

ENCLOSED IMPELLER

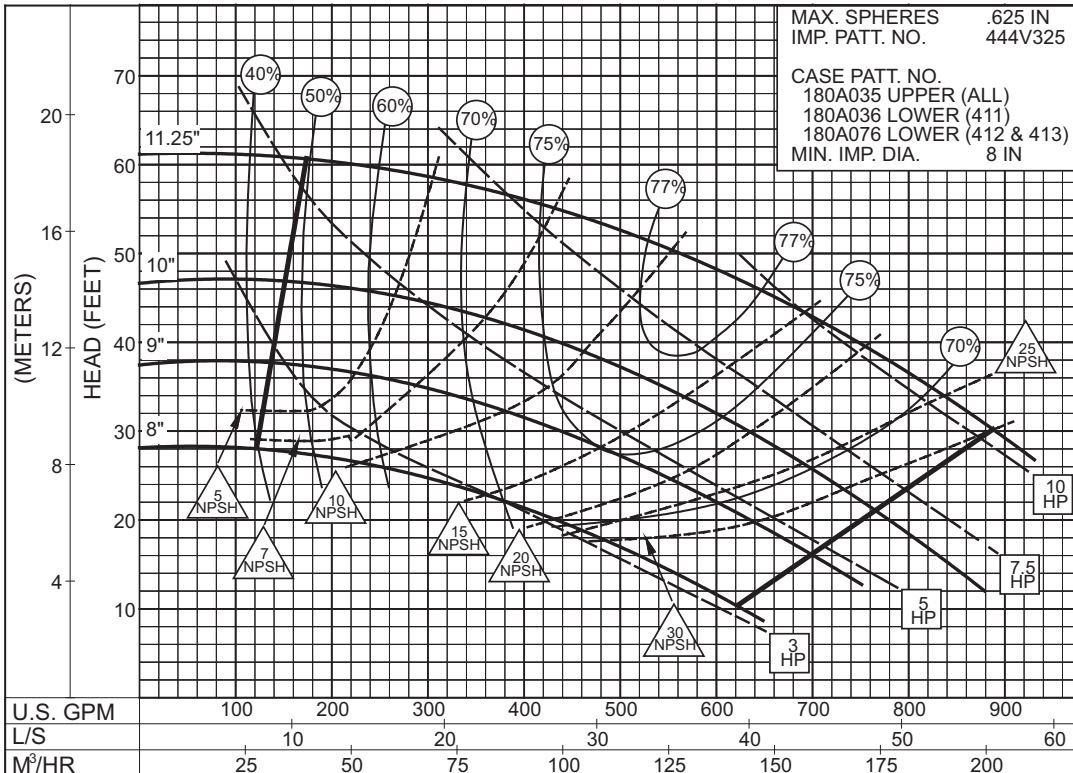
**SIZE : 4x5x11A TYPE : 410 IMPELLER : Enclosed R. P. M. : 1775**



**2PC-117369A**

**1775**  
RPM

**SIZE : 4x5x11A TYPE : 410 IMPELLER : Enclosed R. P. M. : 1180**



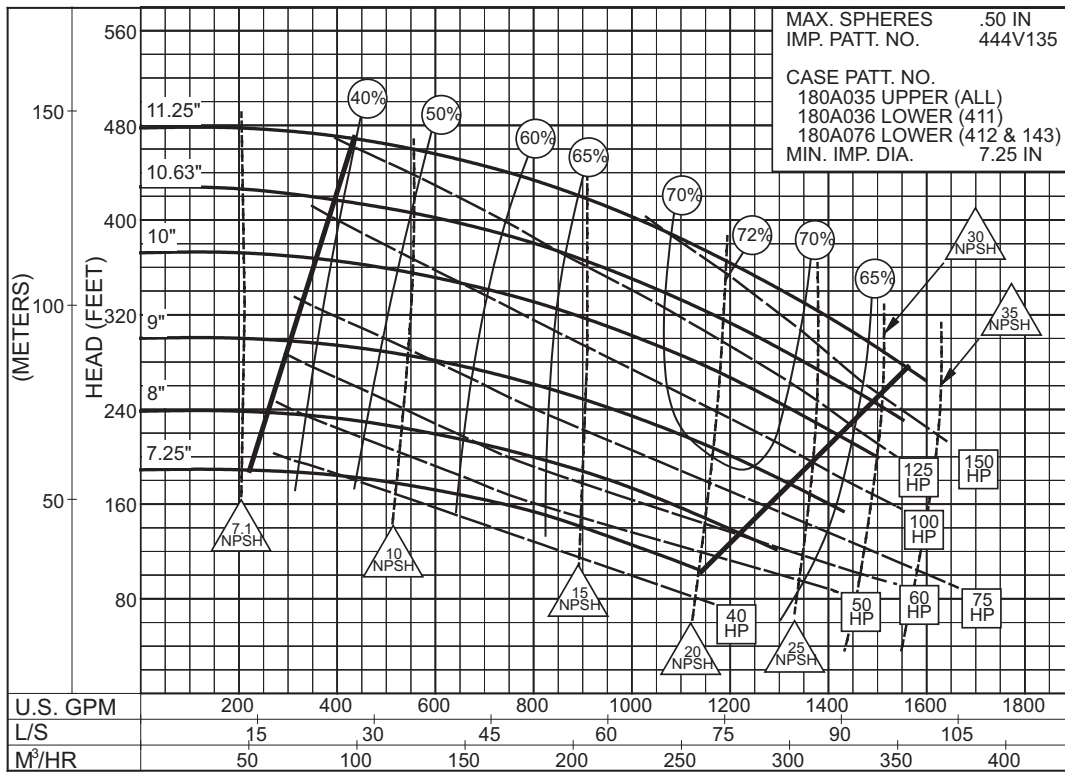
**2PC-117370A**

**1180**  
RPM

# 4 x 5 x 11C SERIES 410

ENCLOSED IMPELLER

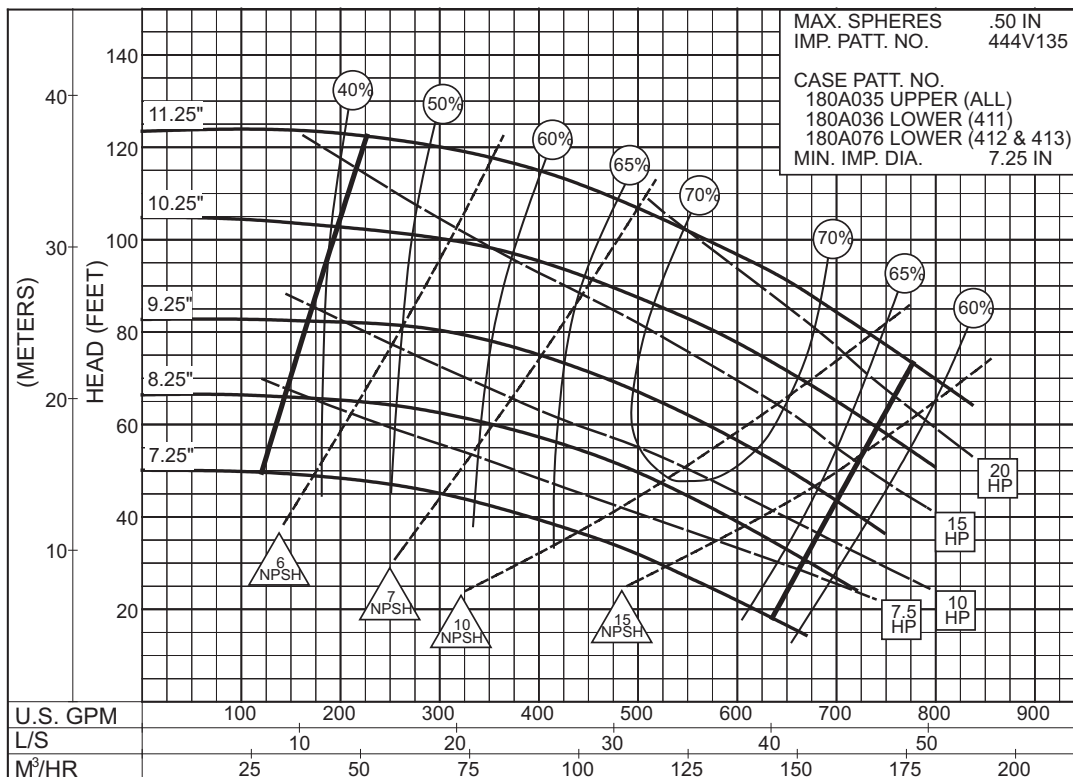
**SIZE : 4x5x11C      TYPE : 410      IMPELLER : Enclosed R. P. M. : 3550**



**2PC-148337A**



**SIZE : 4x5x11C      TYPE : 410      IMPELLER : Enclosed R. P. M. : 1775**



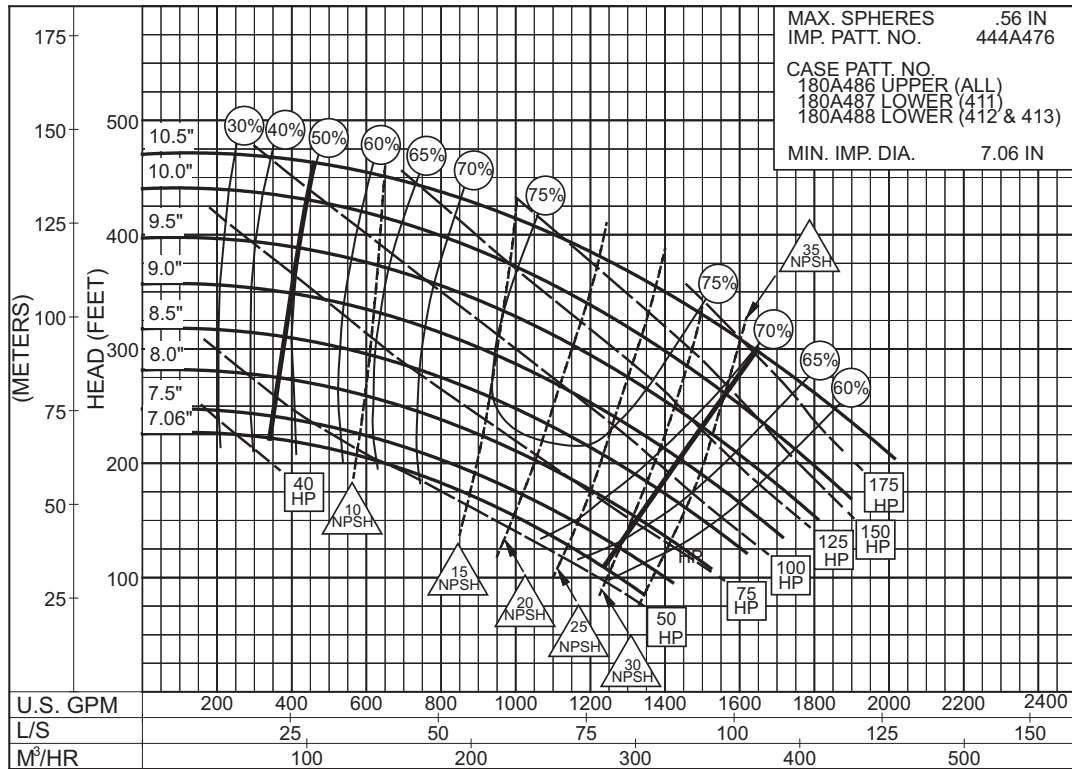
**2PC-117372A**



# 4 x 5 x 11D SERIES 410

## ENCLOSED IMPELLER

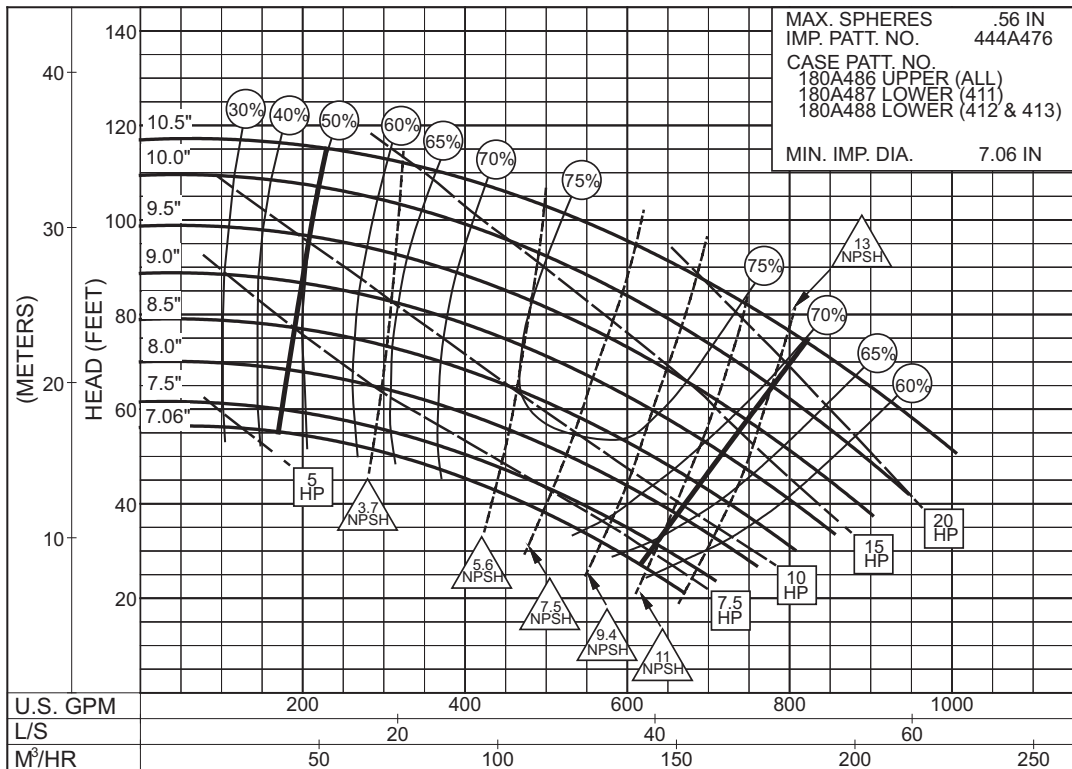
SIZE : 4x5x11D    TYPE : 410    IMPELLER : Enclosed    R. P. M. : 3560



**3560**  
RPM

PC -193673

SIZE : 4x5x11D    TYPE : 410    IMPELLER : Enclosed    R. P. M. : 1775



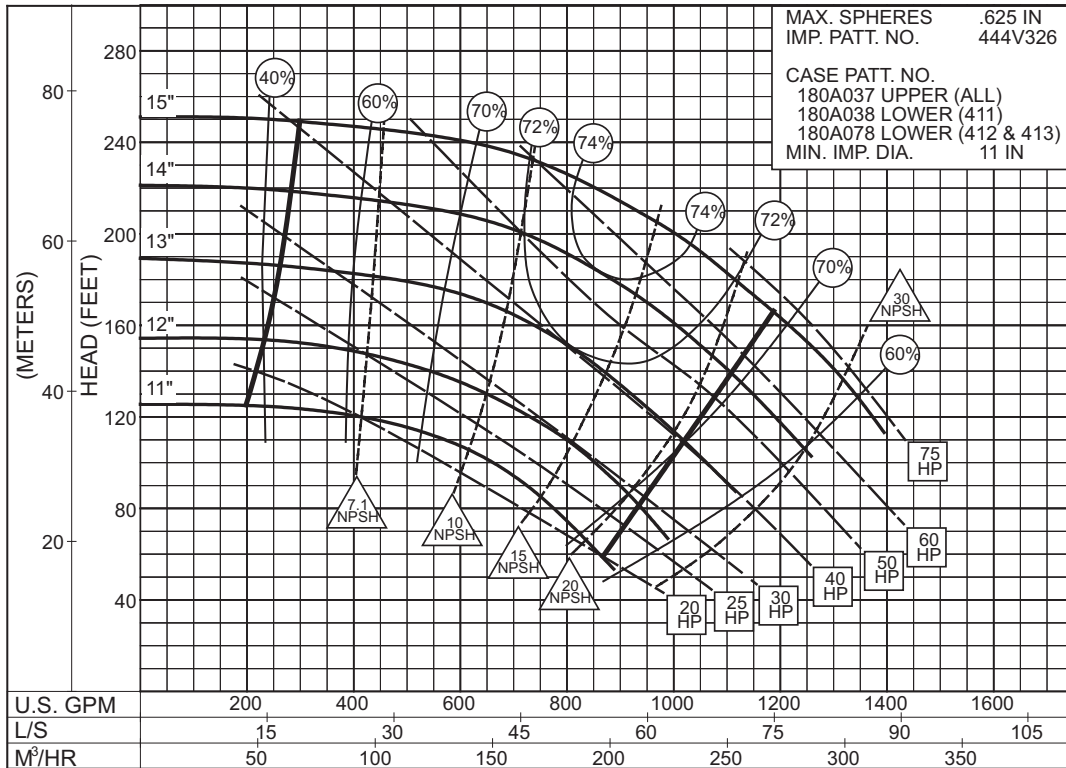
**1775**  
RPM

PC -193674

**4 x 5 x 15**  
**SERIES 410**

ENCLOSED IMPELLER

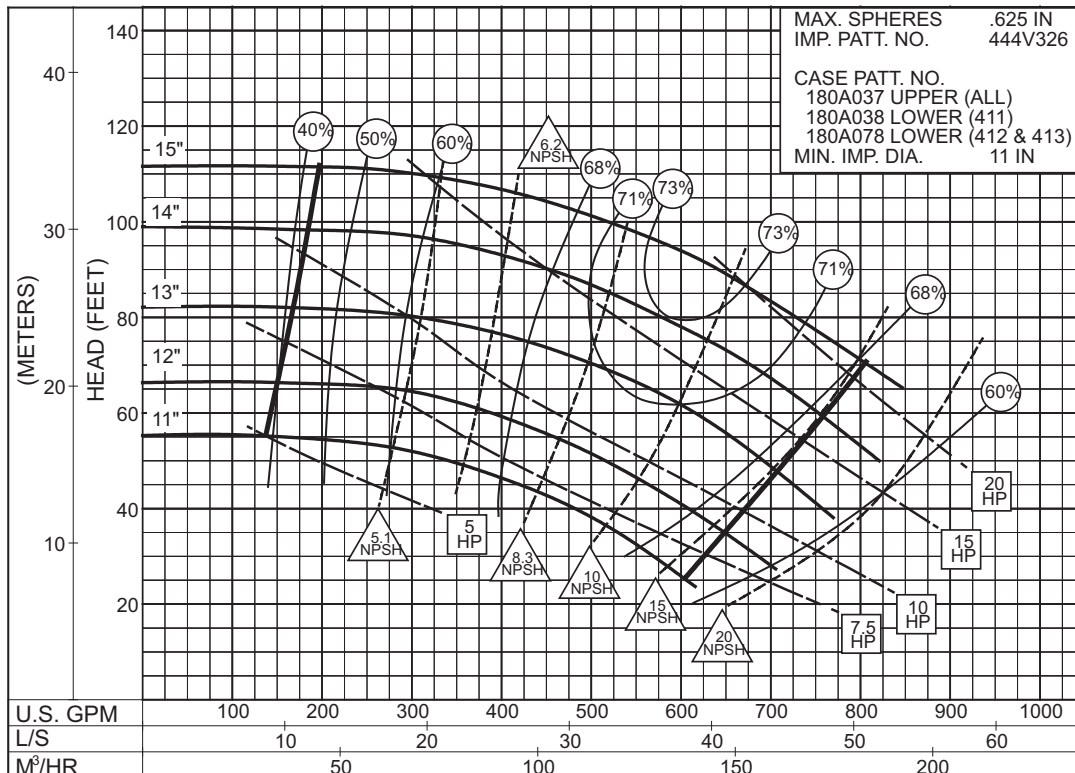
**SIZE : 4x5x15 TYPE : 410 IMPELLER : Enclosed R. P. M. : 1775**



**2PC-117373A**

**1775**  
RPM

**SIZE : 4x5x15 TYPE : 410 IMPELLER : Enclosed R. P. M. : 1180**



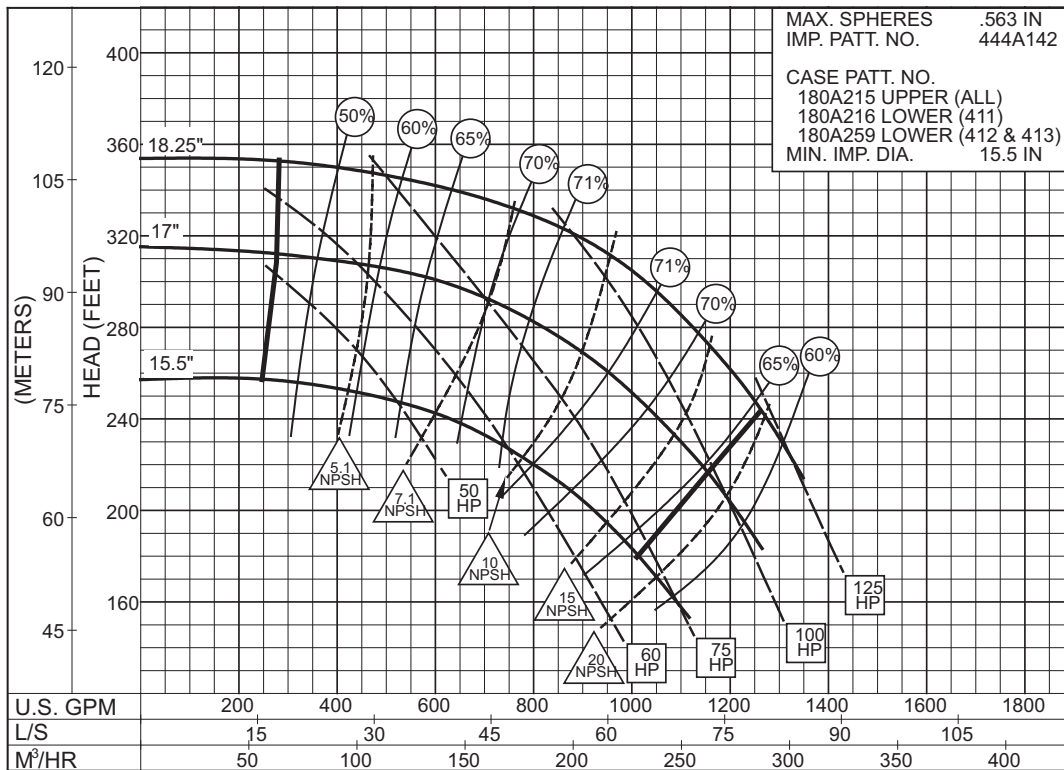
**2PC-117374A**

**1180**  
RPM

# 4 x 6 x 18B SERIES 410

ENCLOSED IMPELLER

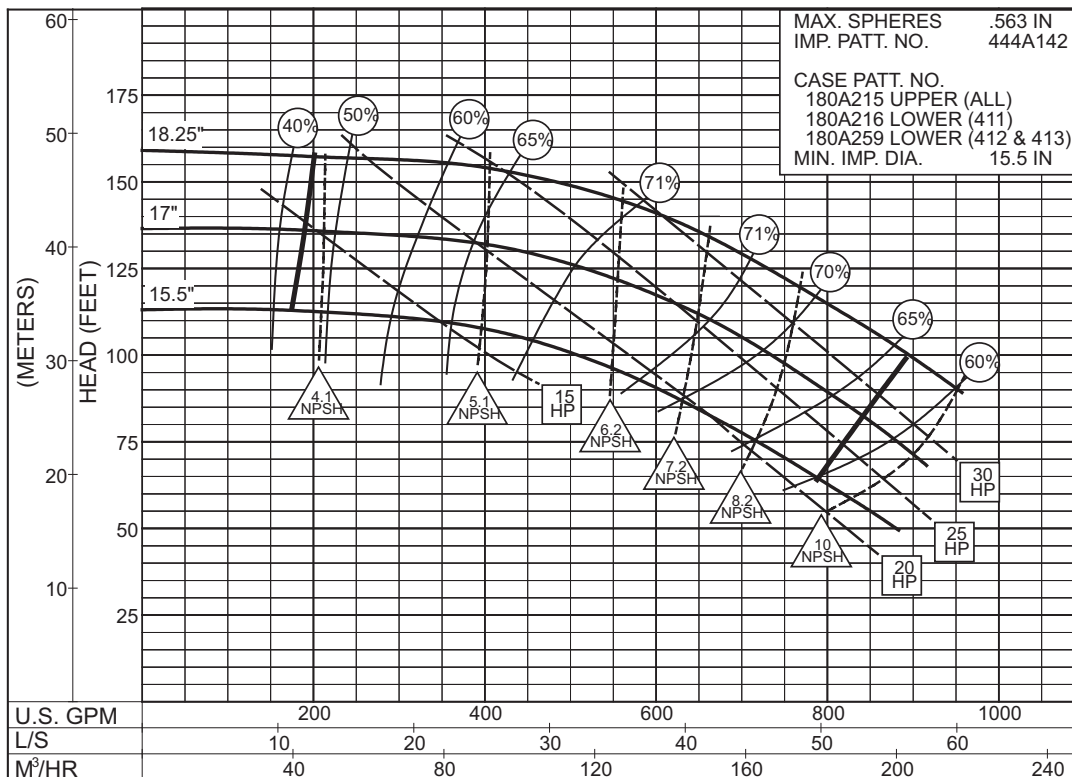
**SIZE : 4x6x18B      TYPE : 410      IMPELLER : Enclosed R. P. M. : 1775**



**2PC-117375A**

**1775**  
RPM

**SIZE : 4x6x18B      TYPE : 410      IMPELLER : Enclosed R. P. M. : 1180**



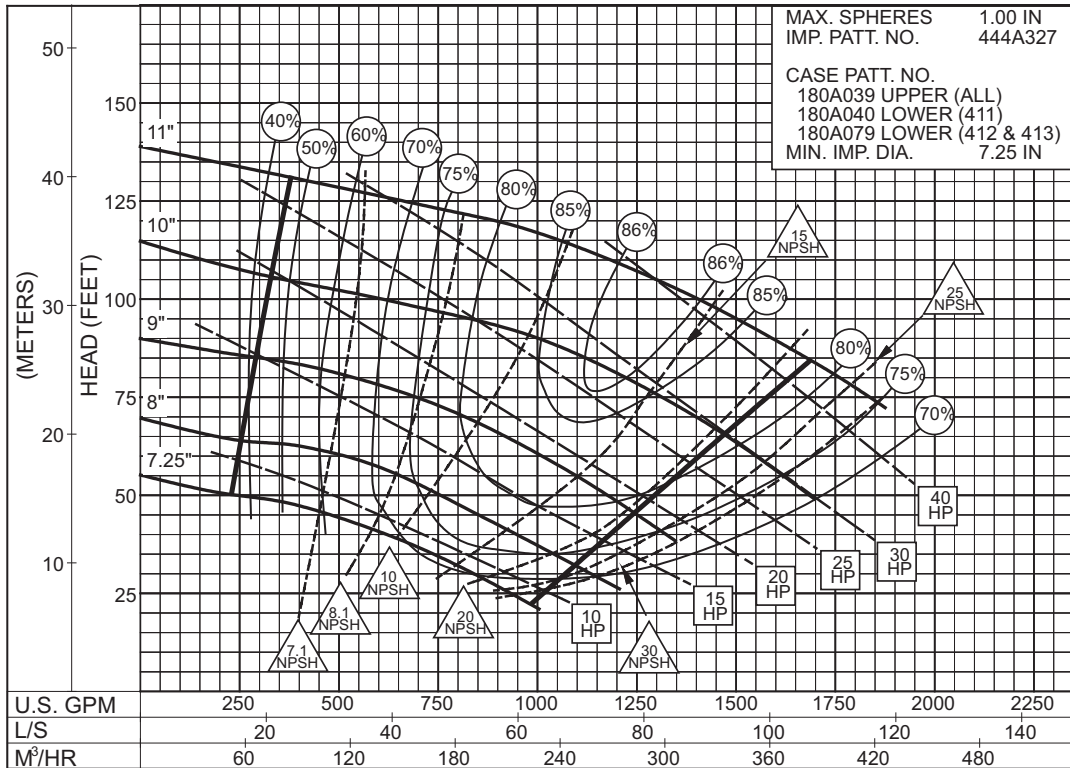
**2PC-117376A**

**1180**  
RPM

**5 x 6 x 11A**  
**SERIES 410**

ENCLOSED IMPELLER

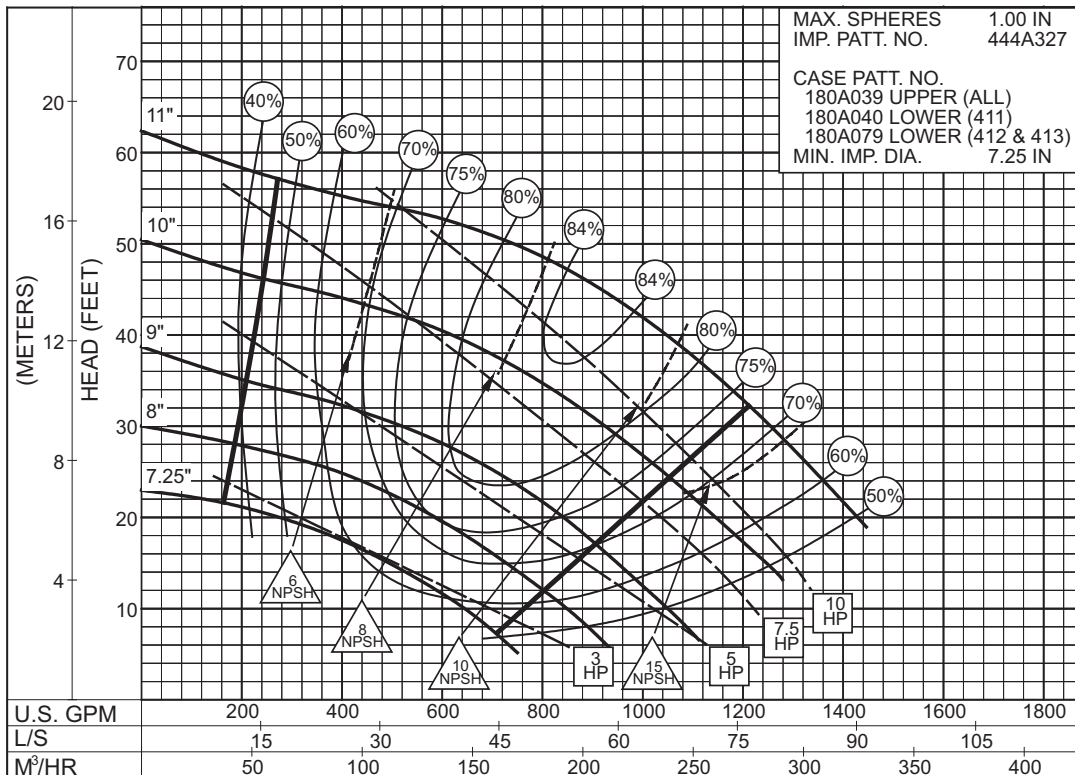
**SIZE : 5x6x11A TYPE : 410 IMPELLER : Enclosed R. P. M. : 1775**



**2JPC-117377A**

**1775**  
RPM

**SIZE : 5x6x11A TYPE : 410 IMPELLER : Enclosed R. P. M. : 1180**

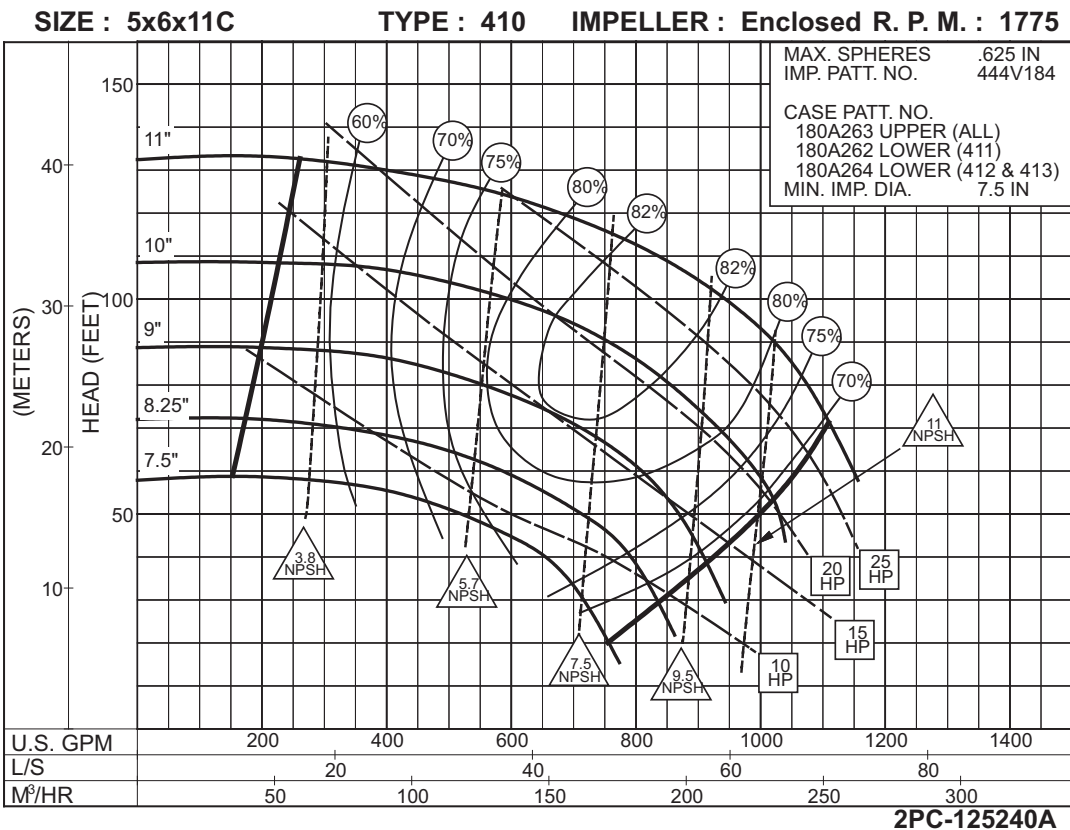
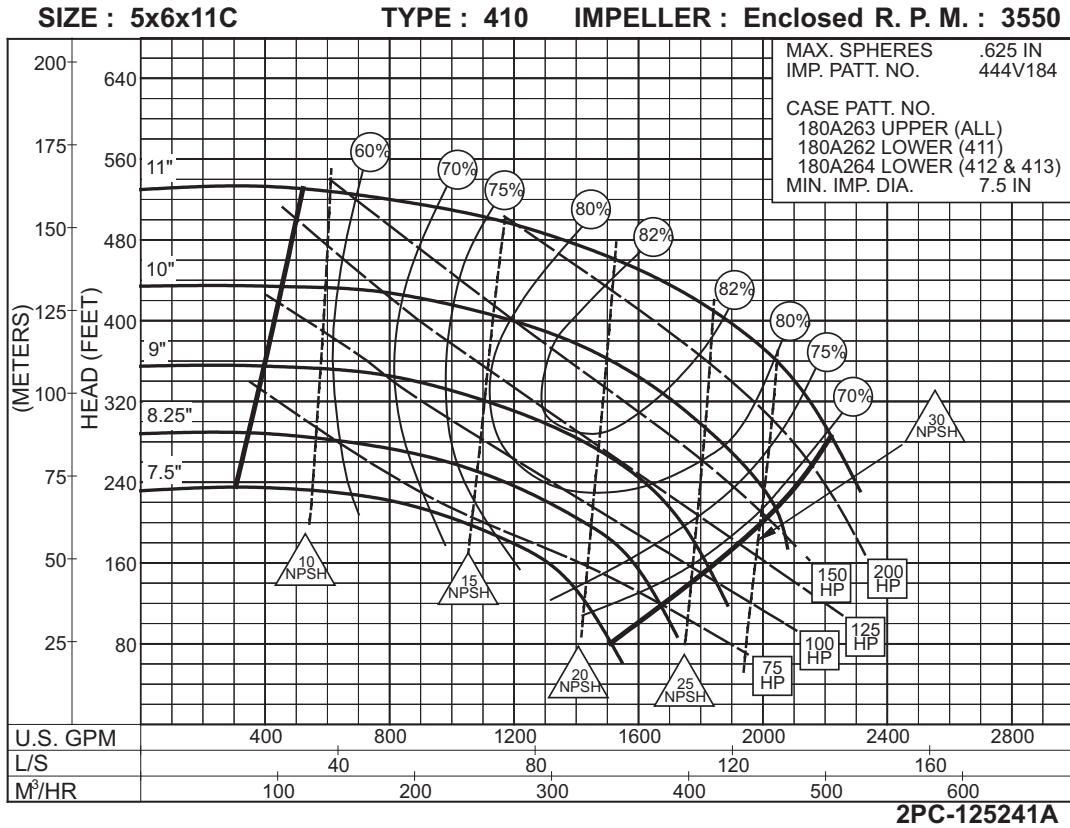


**2PC-117378A**

**1180**  
RPM

# 5 x 6 x 11C SERIES 410

ENCLOSED IMPELLER

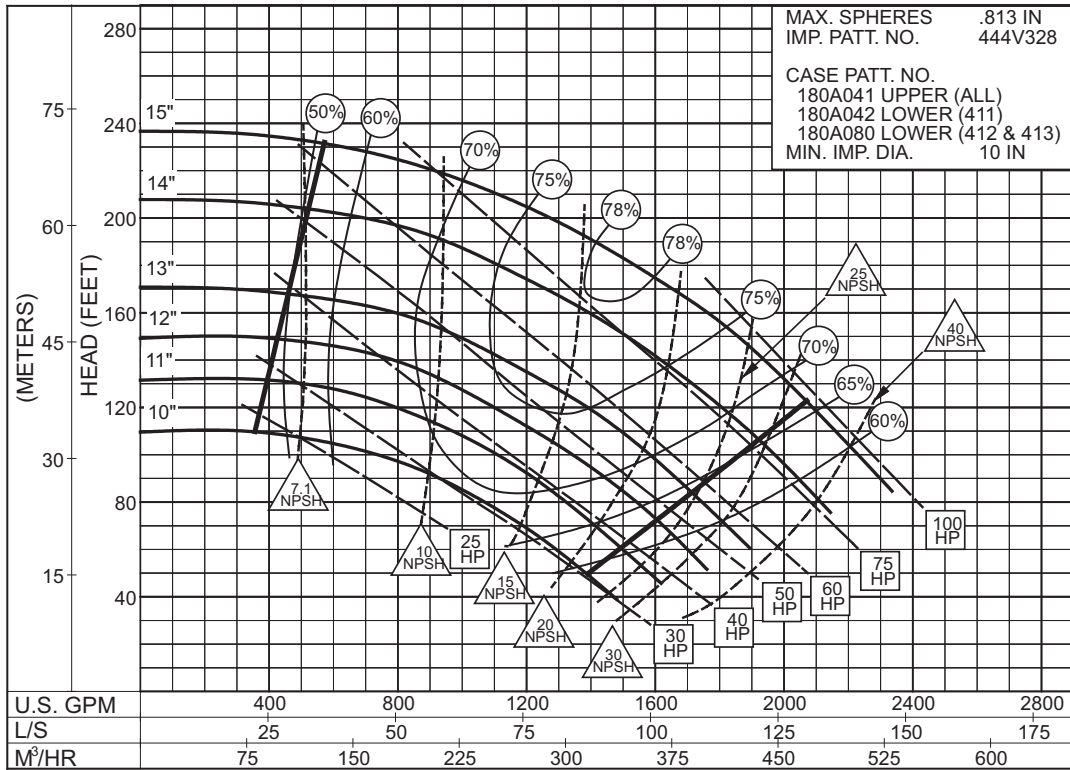




**5 x 6 x 15**  
**SERIES 410**

ENCLOSED IMPELLER

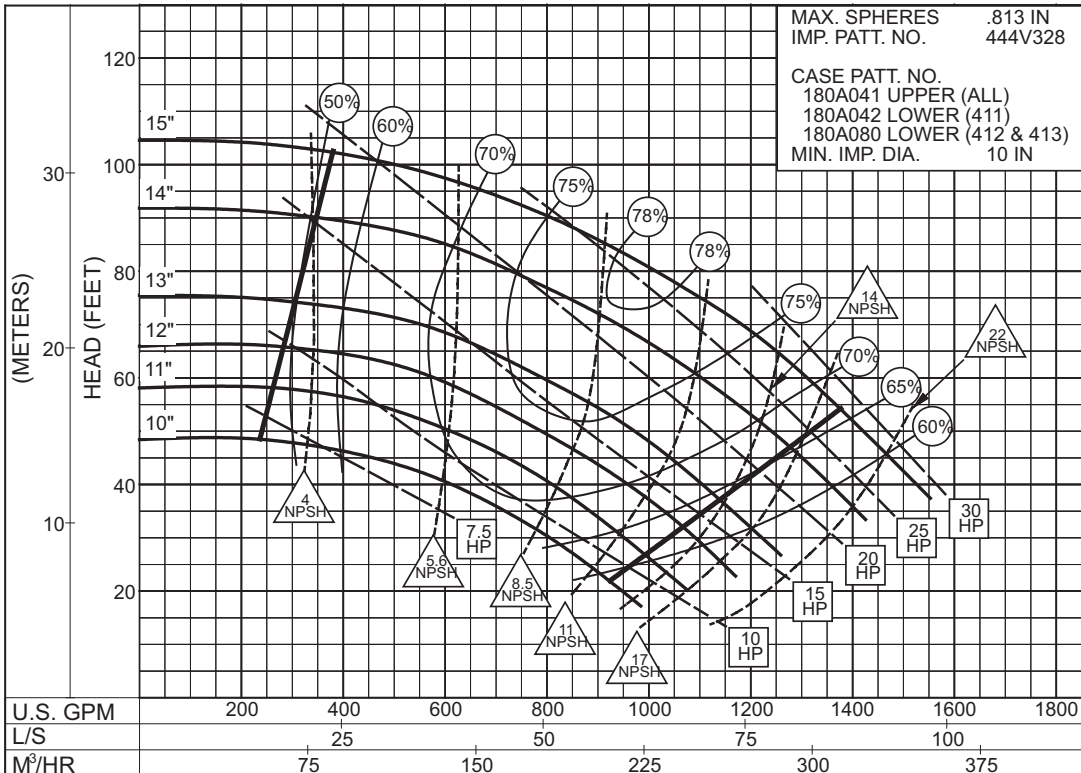
**SIZE : 5x6x15 TYPE : 410 IMPELLER : Enclosed R. P. M. : 1775**



**2PC-117379A**

**1775**  
RPM

**SIZE : 5x6x15 TYPE : 410 IMPELLER : Enclosed R. P. M. : 1180**



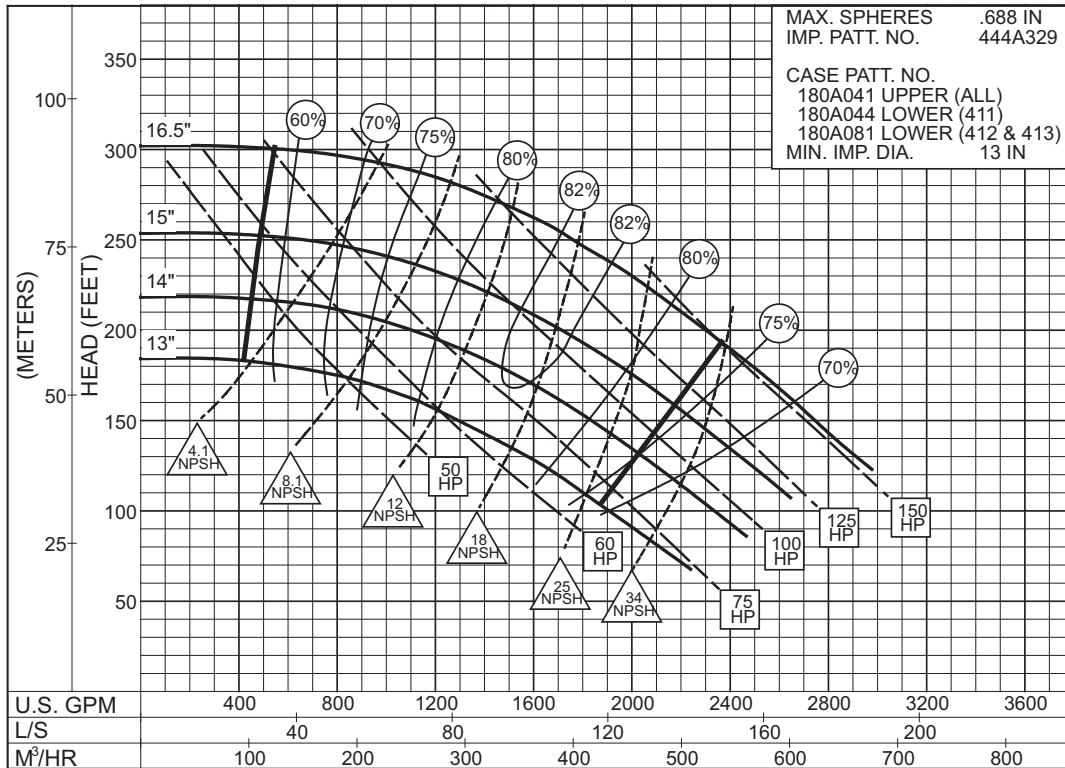
**2PC-117380A**

**1180**  
RPM

# 5 x 6 x 17 SERIES 410

ENCLOSED IMPELLER

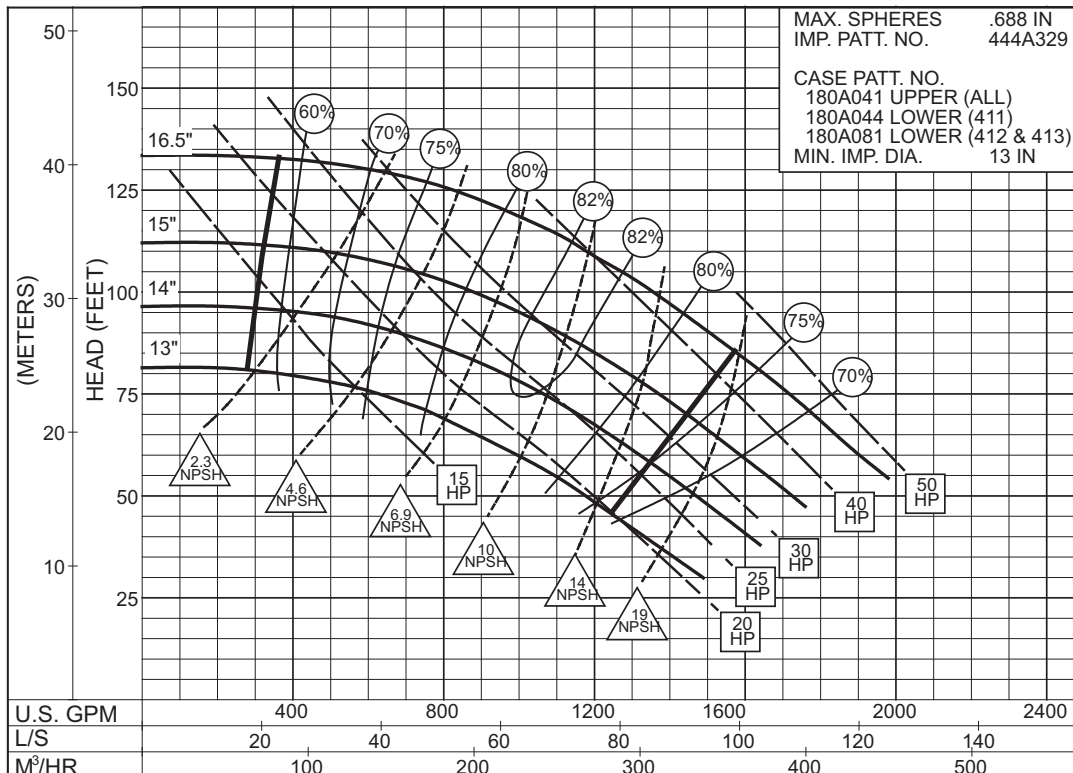
**SIZE : 5x6x17      TYPE : 410      IMPELLER : Enclosed R. P. M. : 1775**



**2PC-144788A**

**1775**  
RPM

**SIZE : 5x6x17      TYPE : 410      IMPELLER : Enclosed R. P. M. : 1180**



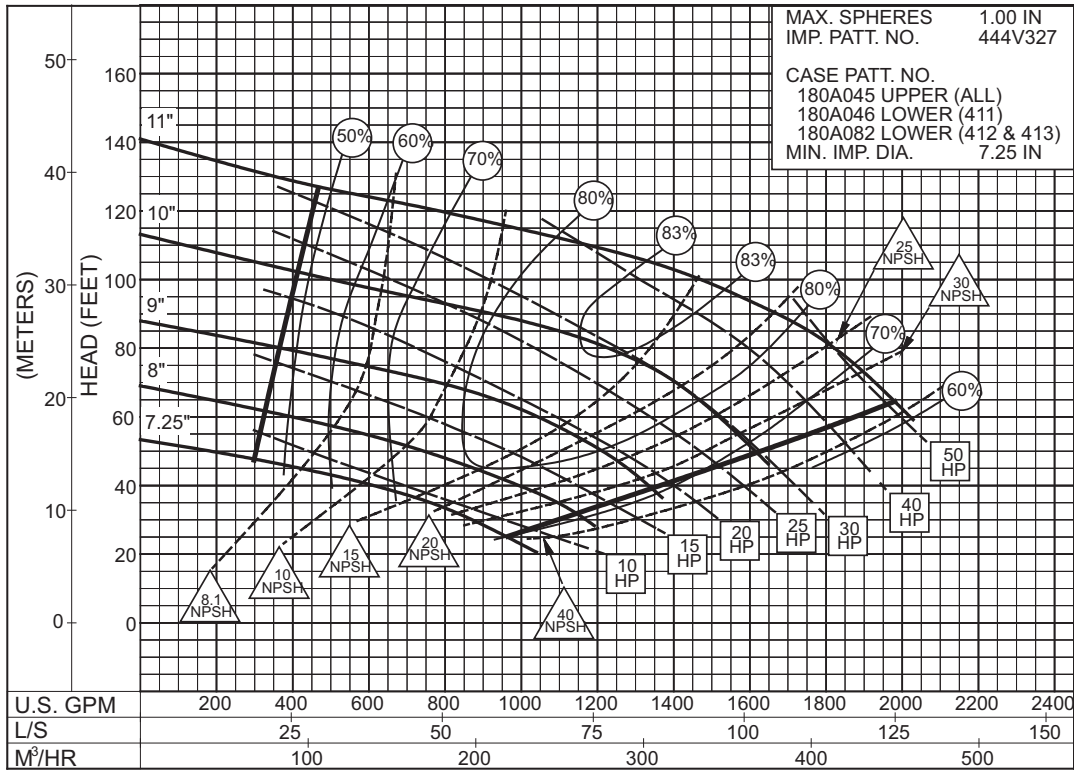
**2PC-144789A**

**1180**  
RPM

# 6 x 8 x 11 SERIES 410

ENCLOSED IMPELLER

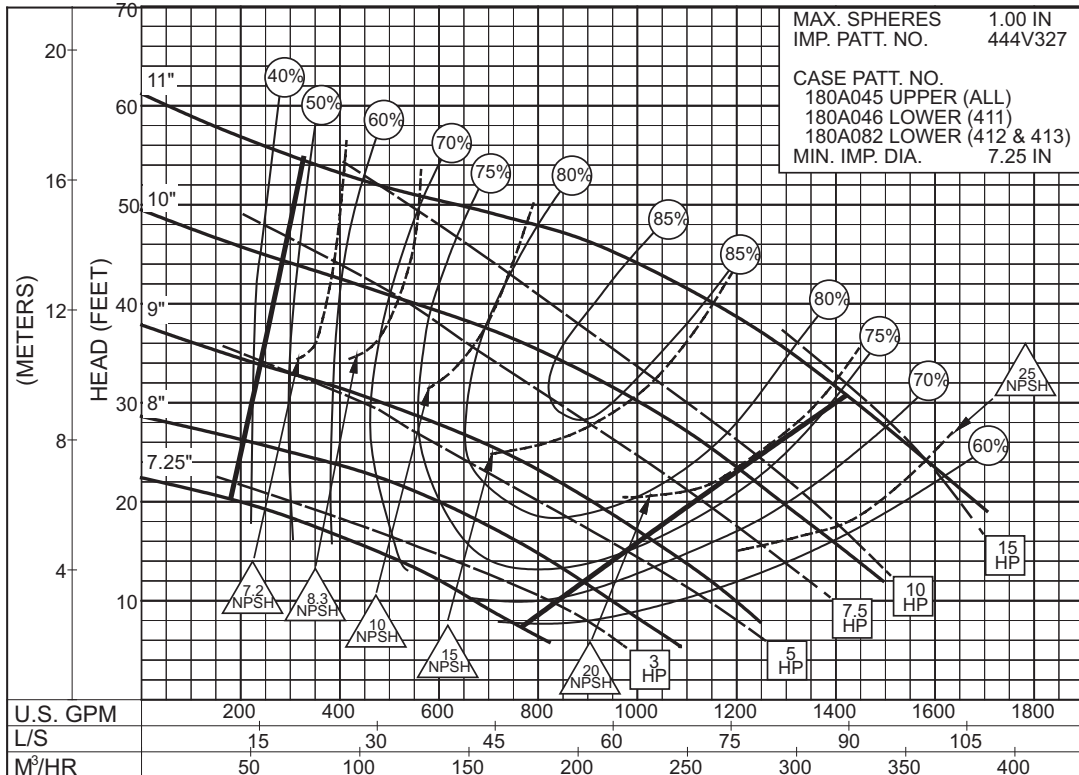
**SIZE : 6x8x11      TYPE : 410      IMPELLER : Enclosed R. P. M. : 1775**



**2PC-117383A**

**1775**  
RPM

**SIZE : 6x8x11      TYPE : 410      IMPELLER : Enclosed R. P. M. : 1180**



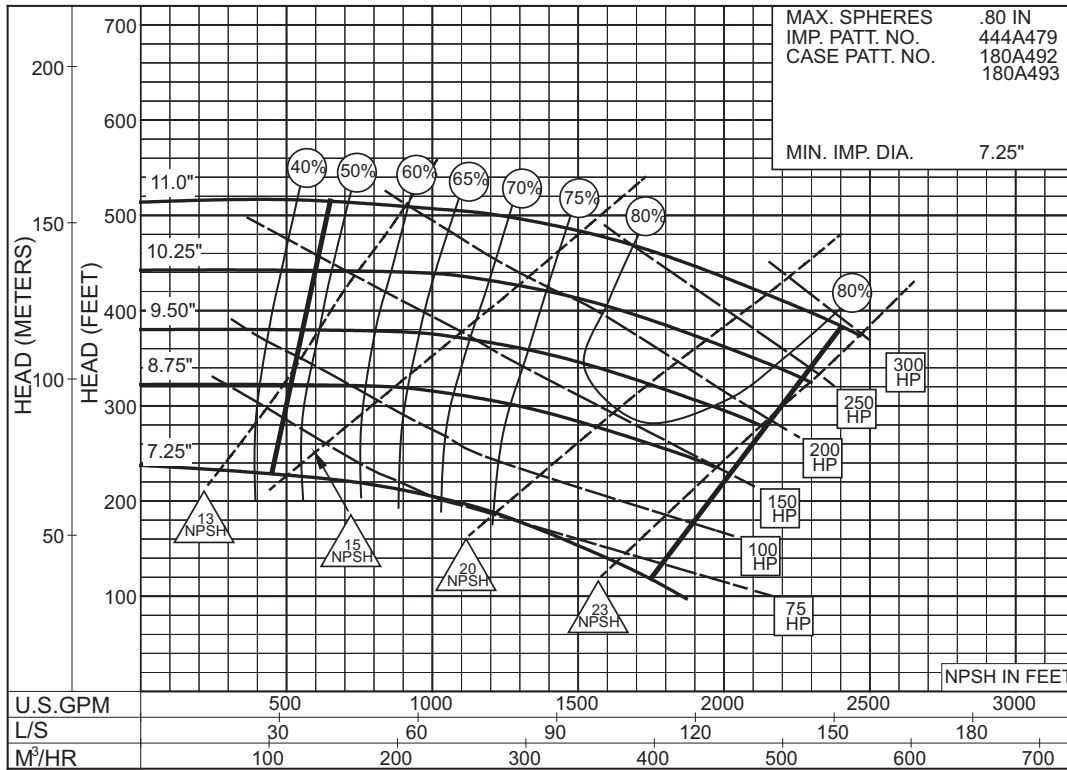
**2PC-117384A**

**1180**  
RPM

# 6x8x11HH SERIES 410

ENCLOSED IMPELLER

**SIZE : 6x8x11HH TYPE : 410 IMPELLER : Enclosed R. P. M. : 3560**



**3560  
RPM**

PC - 186564

# 6x8x14HH SERIES 410

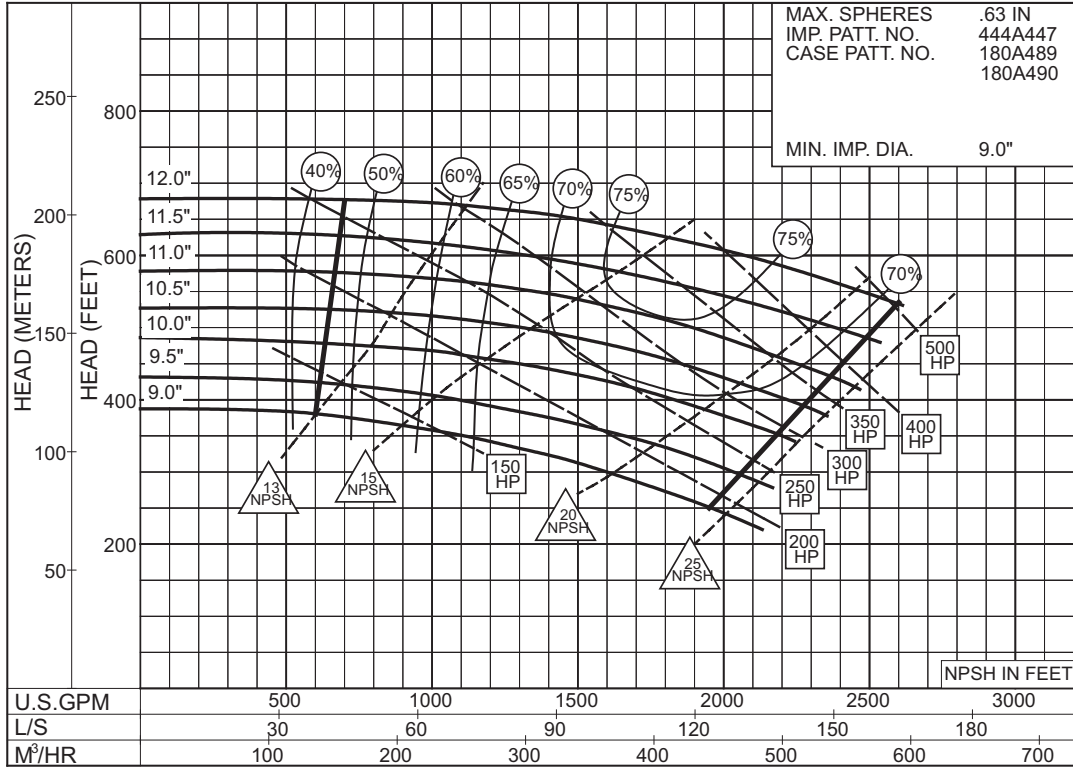
ENCLOSED IMPELLER

**SIZE : 6x8x14HH TYPE : 410 IMPELLER : Enclosed R. P. M. : 3560**

MAX. SPHERES .63 IN  
IMP. PATT. NO. 444A447  
CASE PATT. NO. 180A489  
180A490

MIN. IMP. DIA. 9.0"

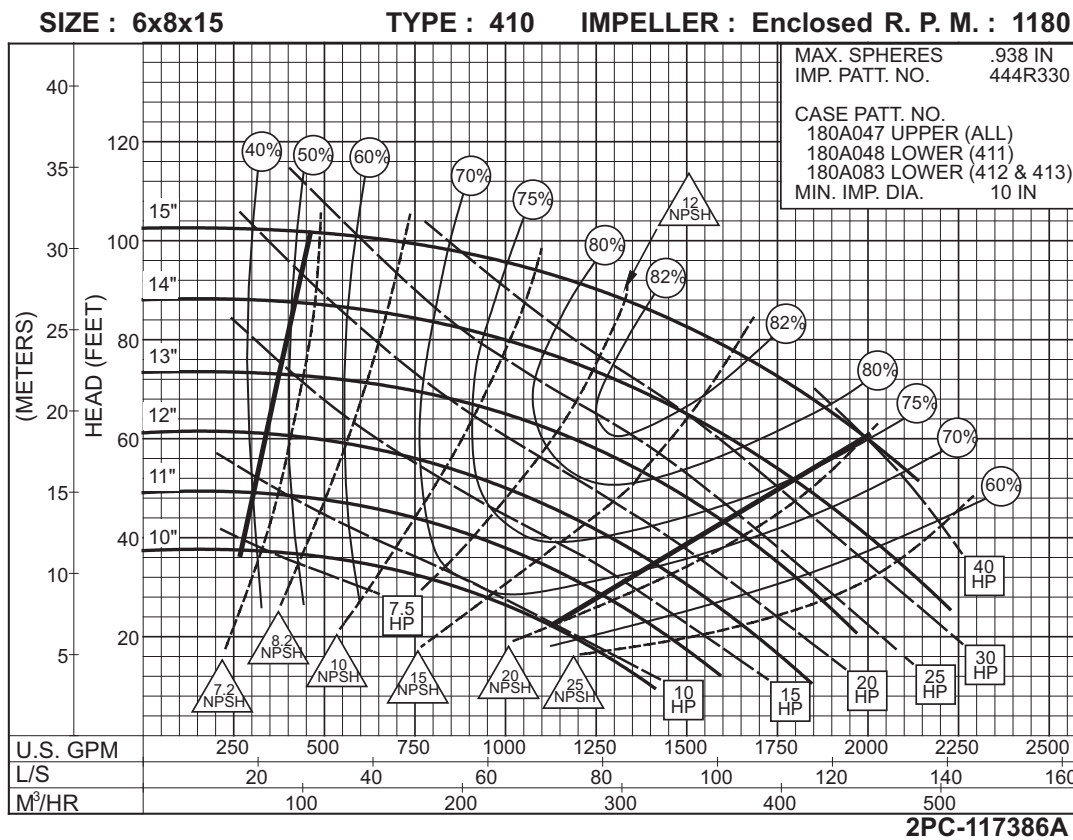
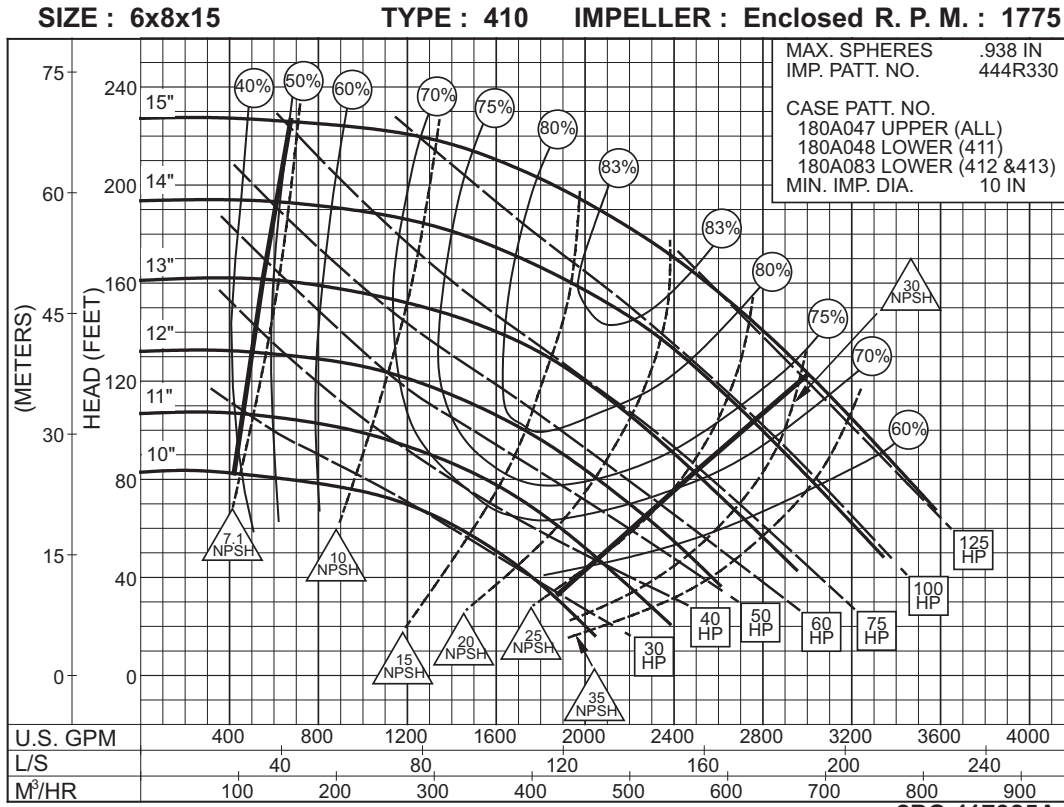
**3560**  
RPM



**PC - 190631**

# 6 x 8 x 15 SERIES 410

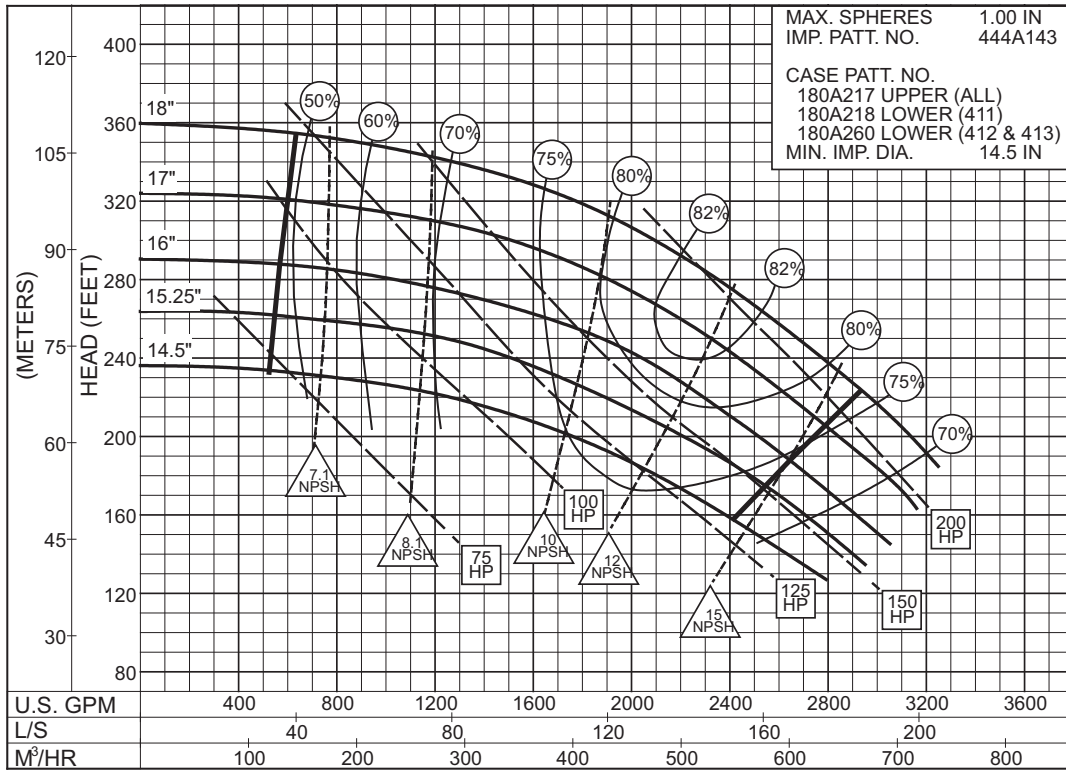
ENCLOSED IMPELLER



**6 x 8 x 18A**  
**SERIES 410**

ENCLOSED IMPELLER

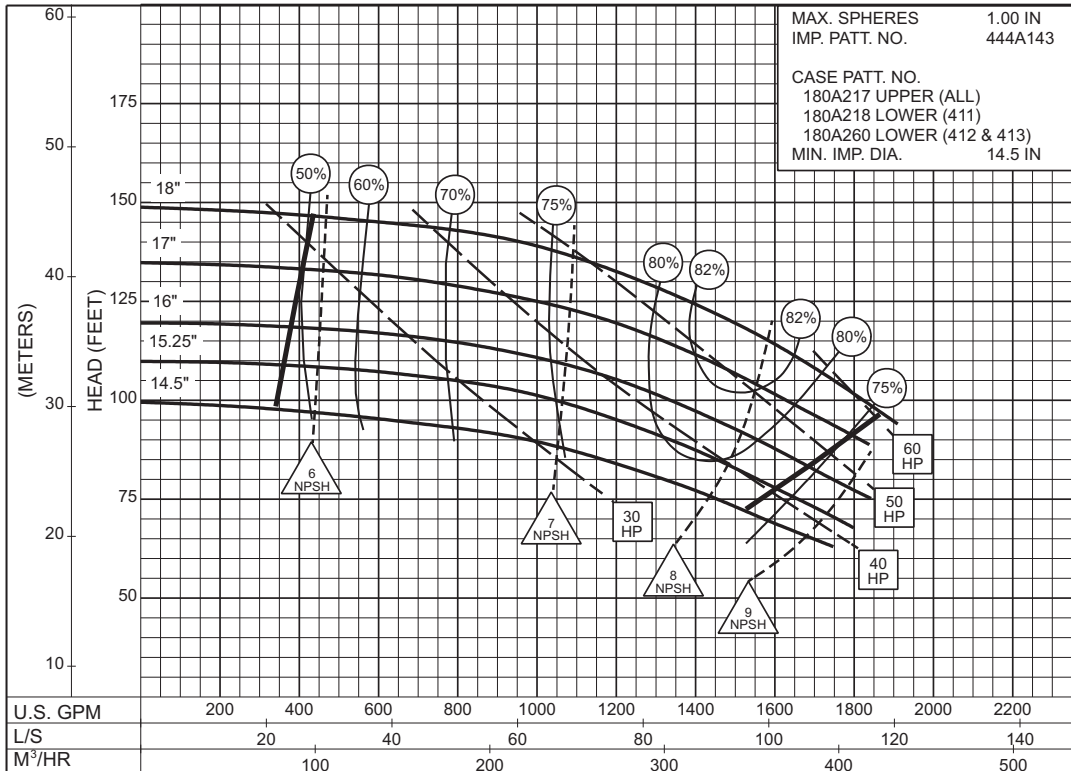
**SIZE : 6x8x18A TYPE : 410 IMPELLER : Enclosed R. P. M. : 1775**



**2PC-125666A**

**1775**  
RPM

**SIZE : 6x8x18A TYPE : 410 IMPELLER : Enclosed R. P. M. : 1150**

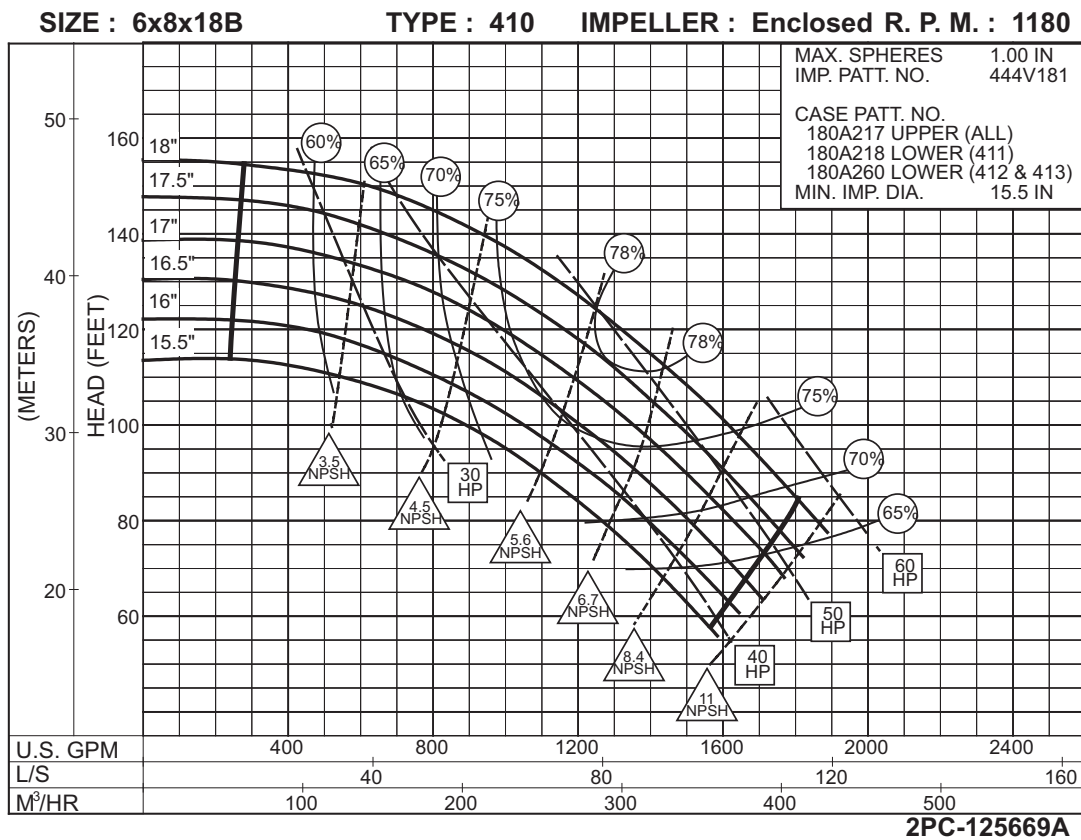
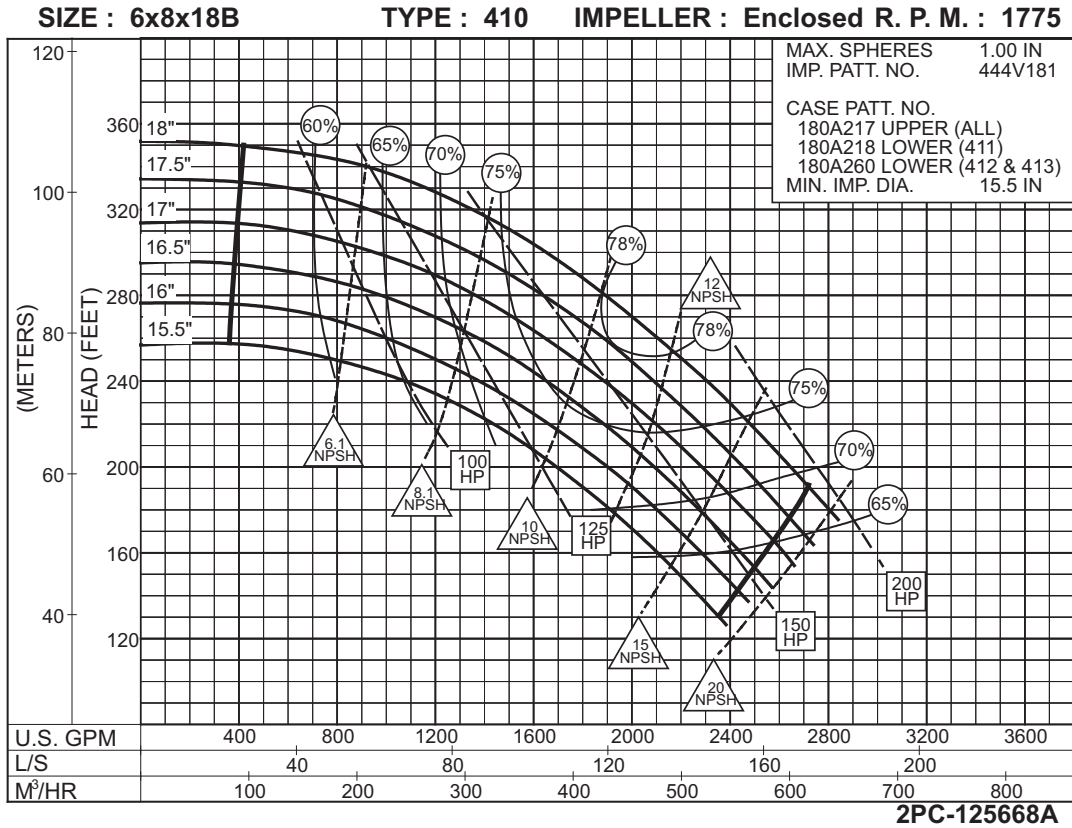


**2PC-125667**

**1150**  
RPM

# 6 x 8 x 18B SERIES 410

ENCLOSED IMPELLER

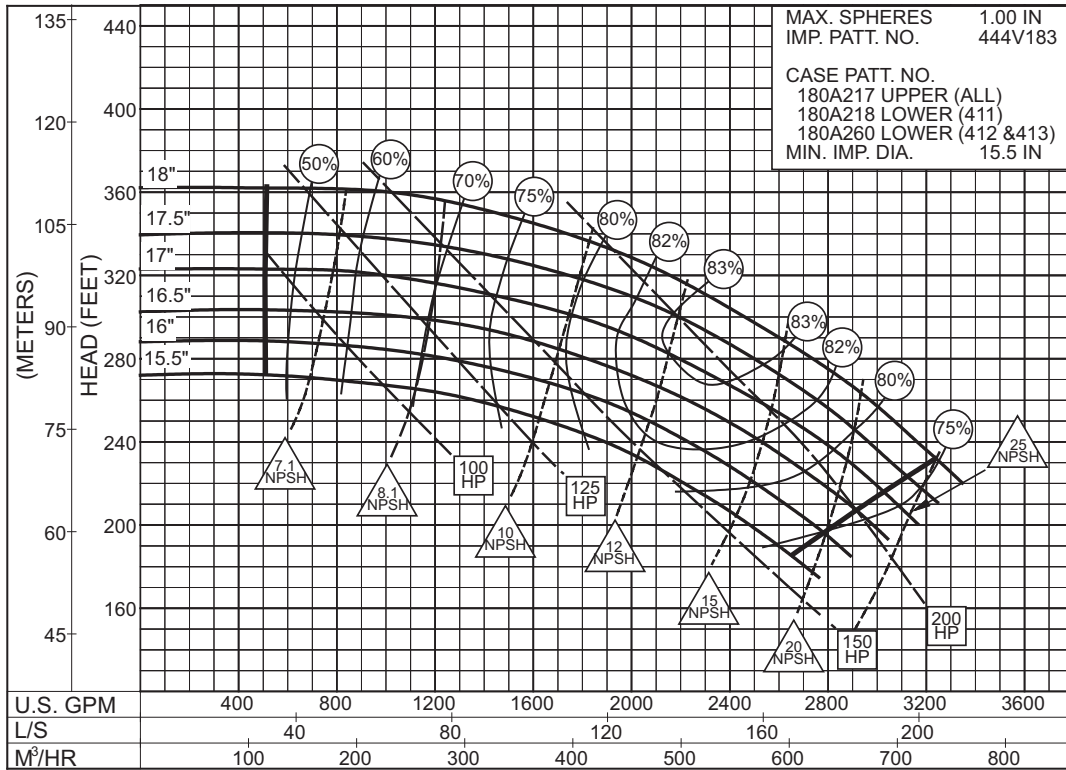




# 6 x 8 x18C SERIES 410

ENCLOSED IMPELLER

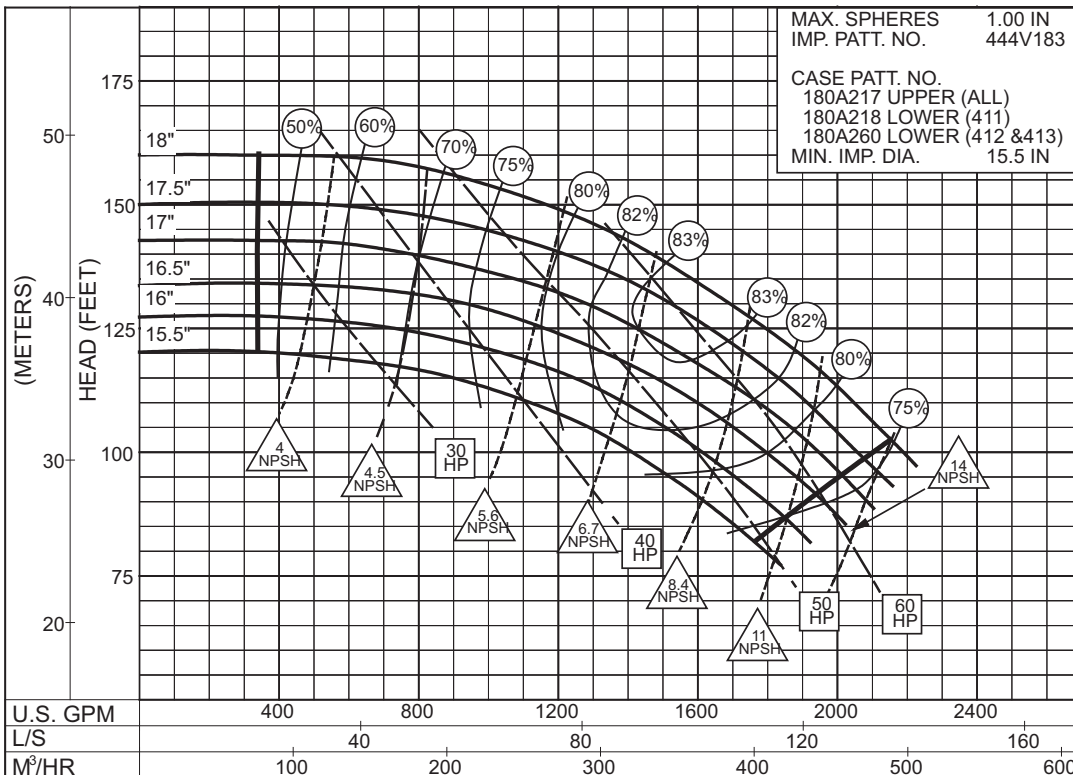
**SIZE : 6x8x18C      TYPE : 410      IMPELLER : Enclosed R. P. M. : 1775**



**2PC-125670A**

**1775**  
RPM

**SIZE : 6x8x18C      TYPE : 410      IMPELLER : Enclosed R. P. M. : 1180**



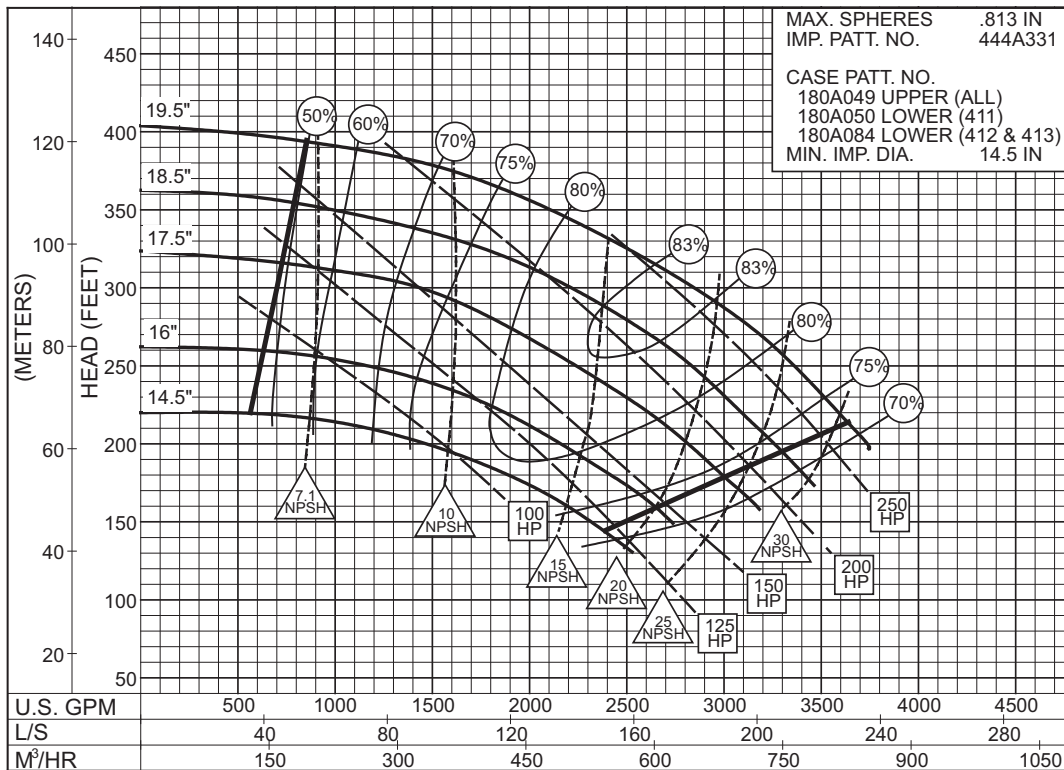
**2PC-125671A**

**1180**  
RPM

# 6 x 8 x 20 SERIES 410

ENCLOSED IMPELLER

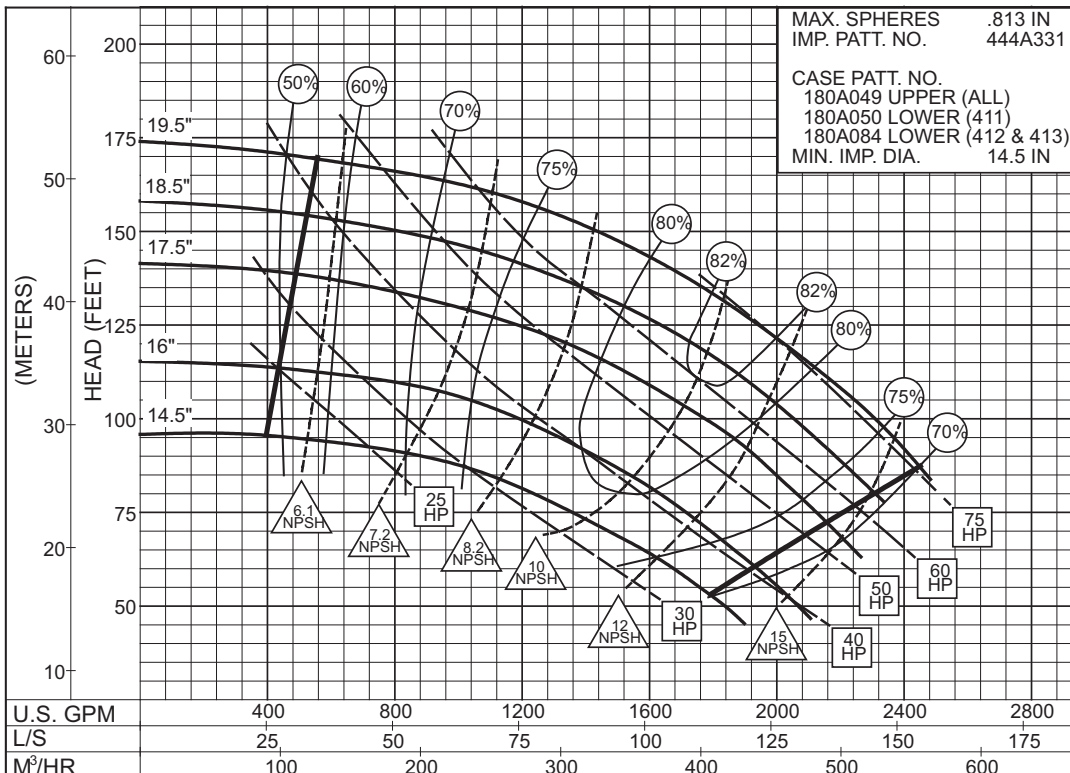
**SIZE : 6x8x20      TYPE : 410      IMPELLER : Enclosed R. P. M. : 1780**



**2PC-117389A**



**SIZE : 6x8x20      TYPE : 410      IMPELLER : Enclosed R. P. M. : 1175**



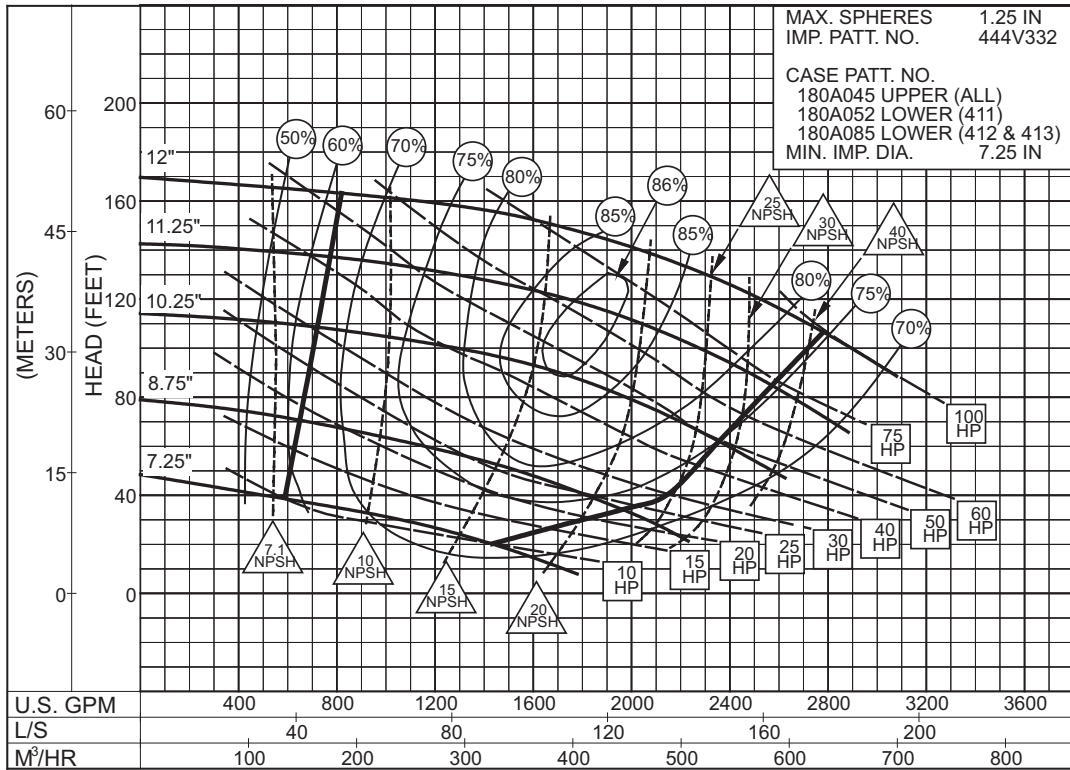
**2PC-117390A**



**8 x 8 x 11B**  
**SERIES 410**

ENCLOSED IMPELLER

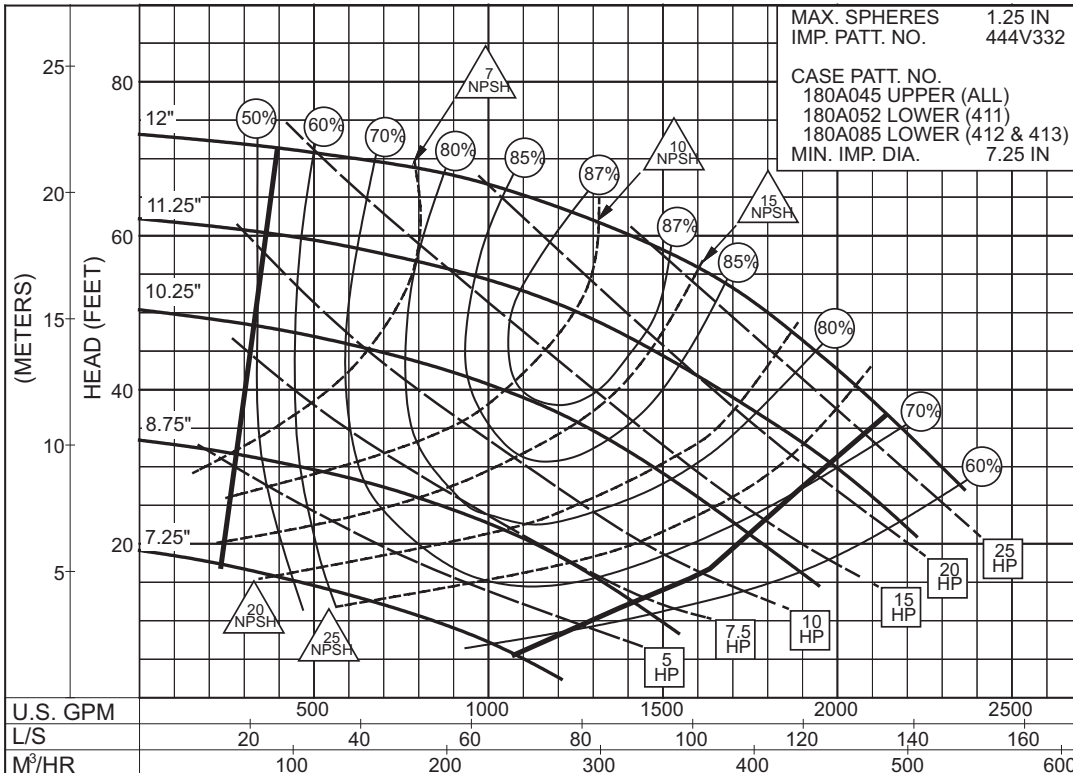
**SIZE : 8x8x11B TYPE : 410 IMPELLER : Enclosed R. P. M. : 1775**



**2PC-131637A**

**1775**  
RPM

**SIZE : 8x8x11B TYPE : 410 IMPELLER : Enclosed R. P. M. : 1180**



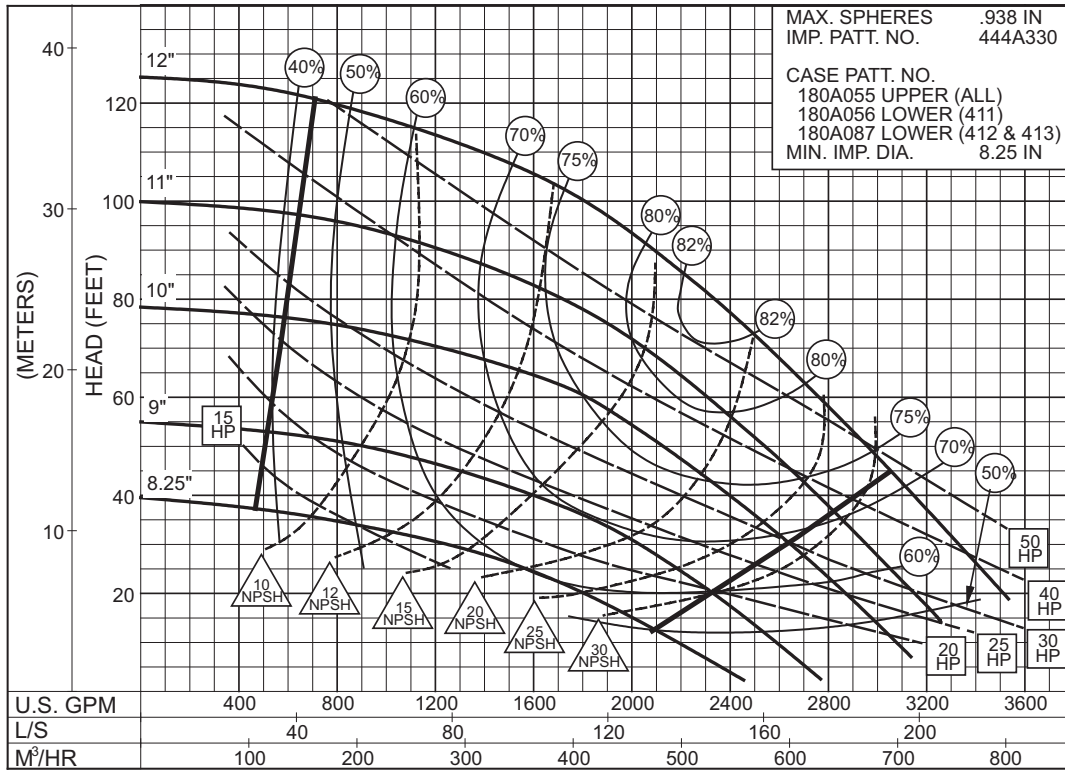
**2PC-131638A**

**1180**  
RPM

# 8 x 10 x 12 SERIES 410

ENCLOSED IMPELLER

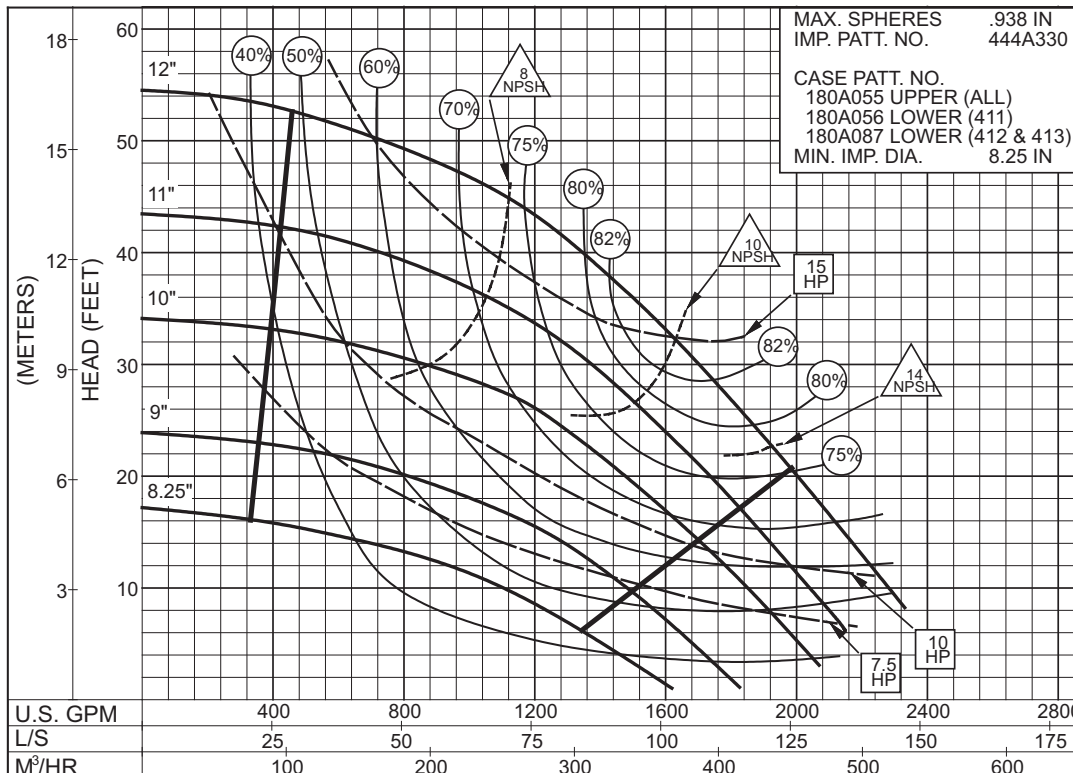
**SIZE : 8x10x12 TYPE : 410 IMPELLER : Enclosed R. P. M. : 1775**



**2PC-117393A**

**1775**  
RPM

**SIZE : 8x10x12 TYPE : 410 IMPELLER : Enclosed R. P. M. : 1180**



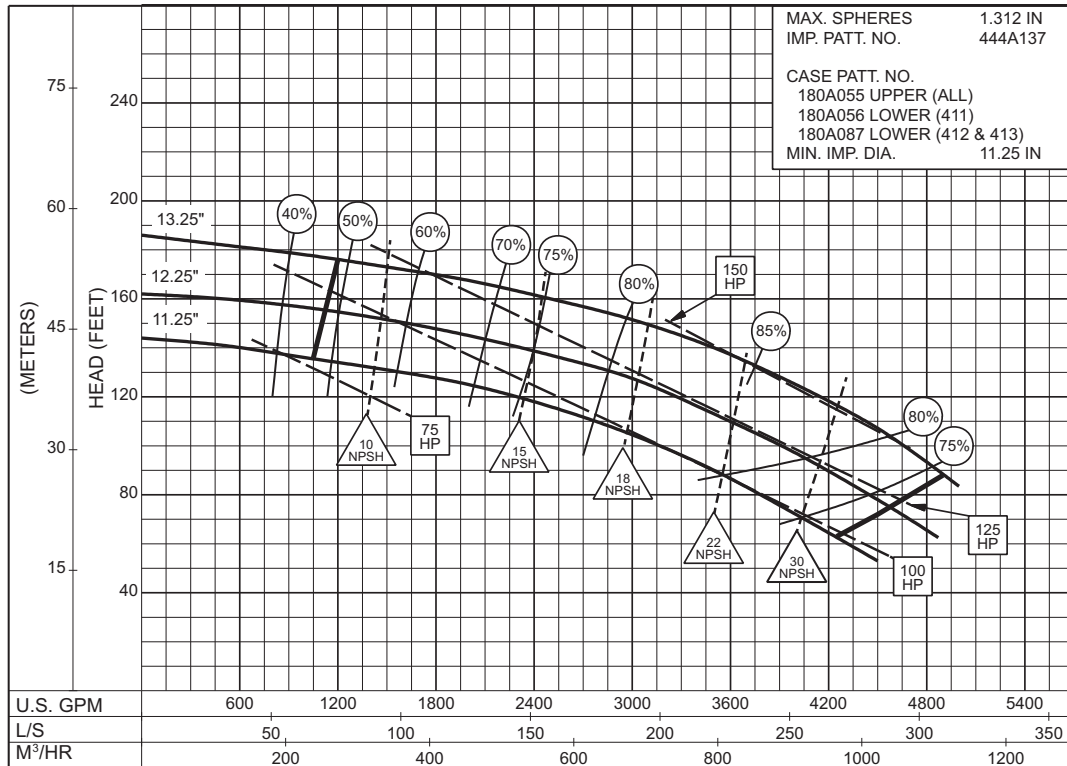
**2PC-117394A**

**1180**  
RPM

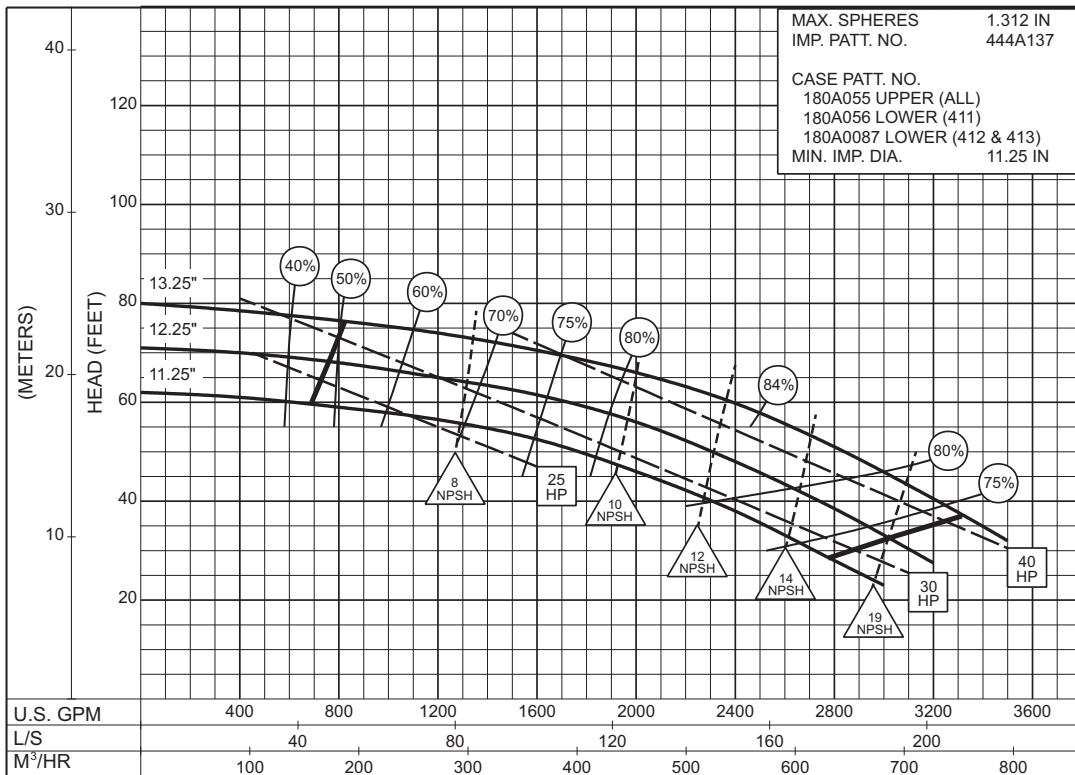
# 8 x 10 x 12A SERIES 410

## ENCLOSED IMPELLER

**SIZE : 8x10x12A      TYPE : 410      IMPELLER : Enclosed      R. P. M. : 1775**

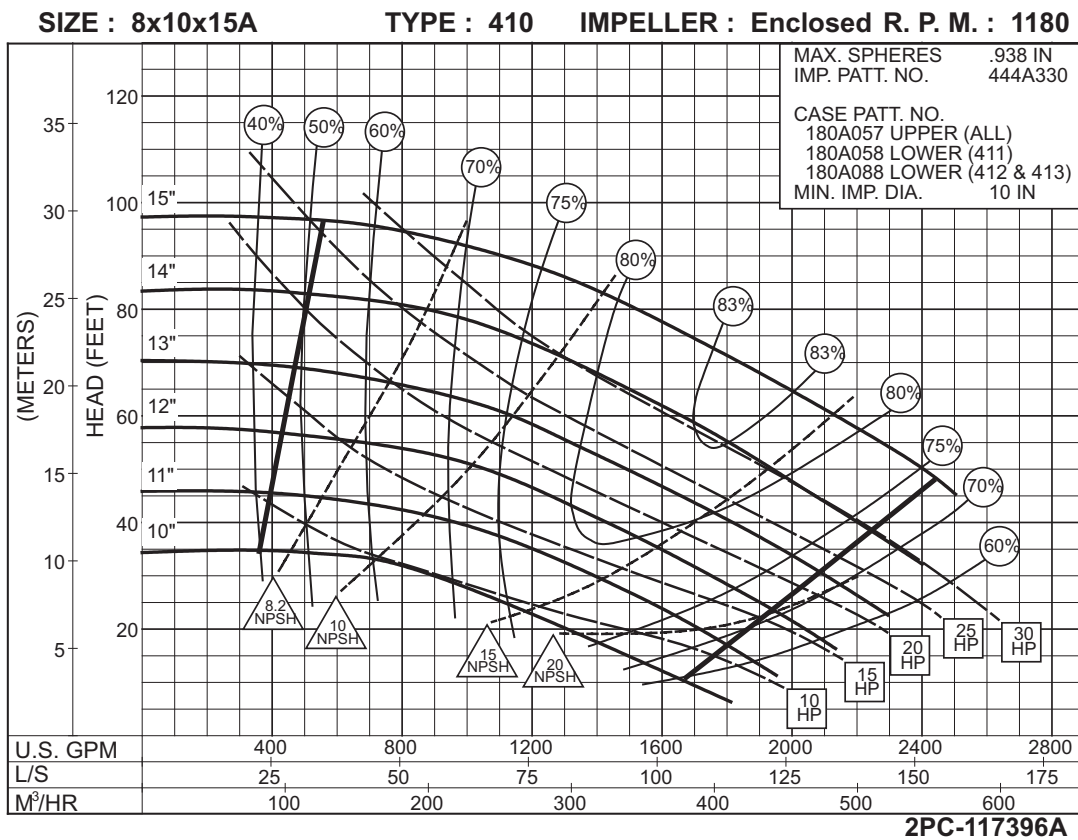
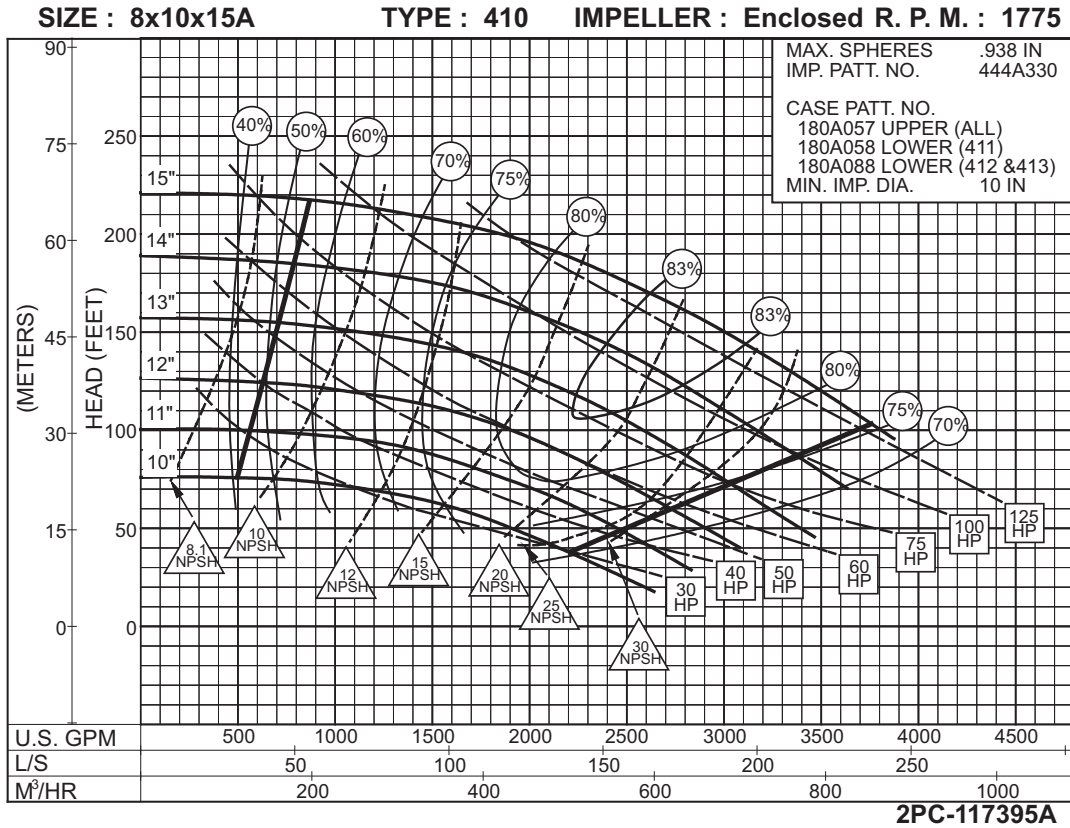


**SIZE : 8x10x12A      TYPE : 410      IMPELLER : Enclosed      R. P. M. : 1175**



# 8 x 10 x 15A SERIES 410

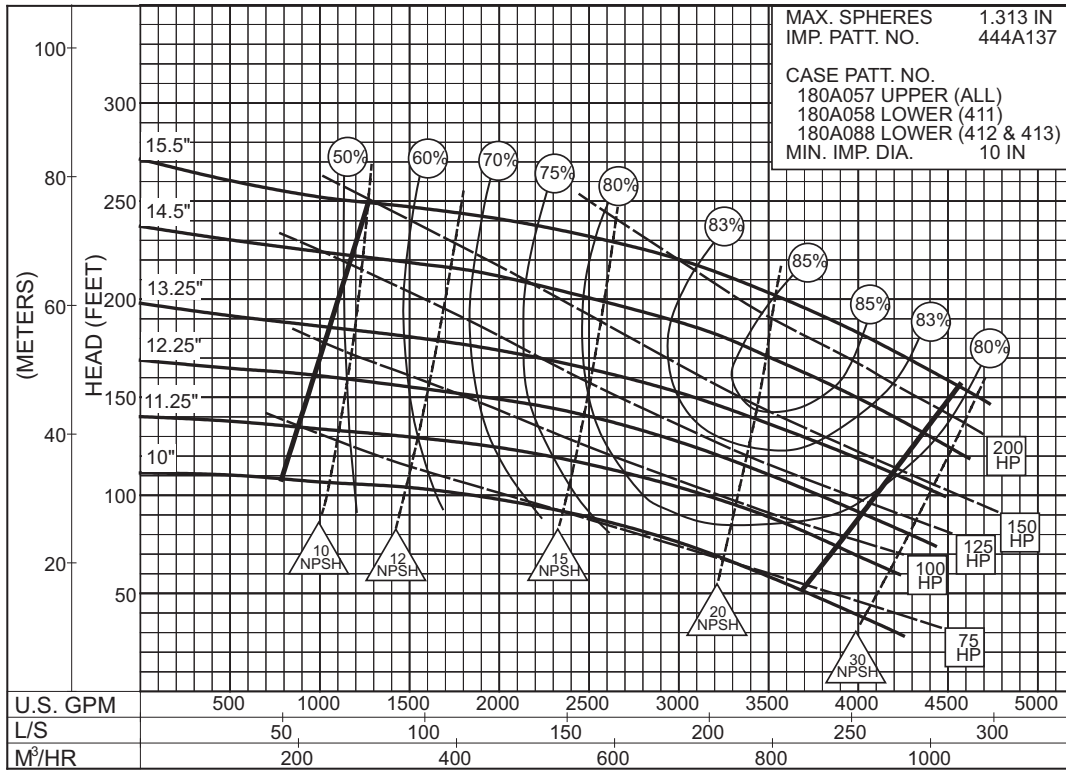
ENCLOSED IMPELLER



**8 x 10 x 15B**  
**SERIES 410**

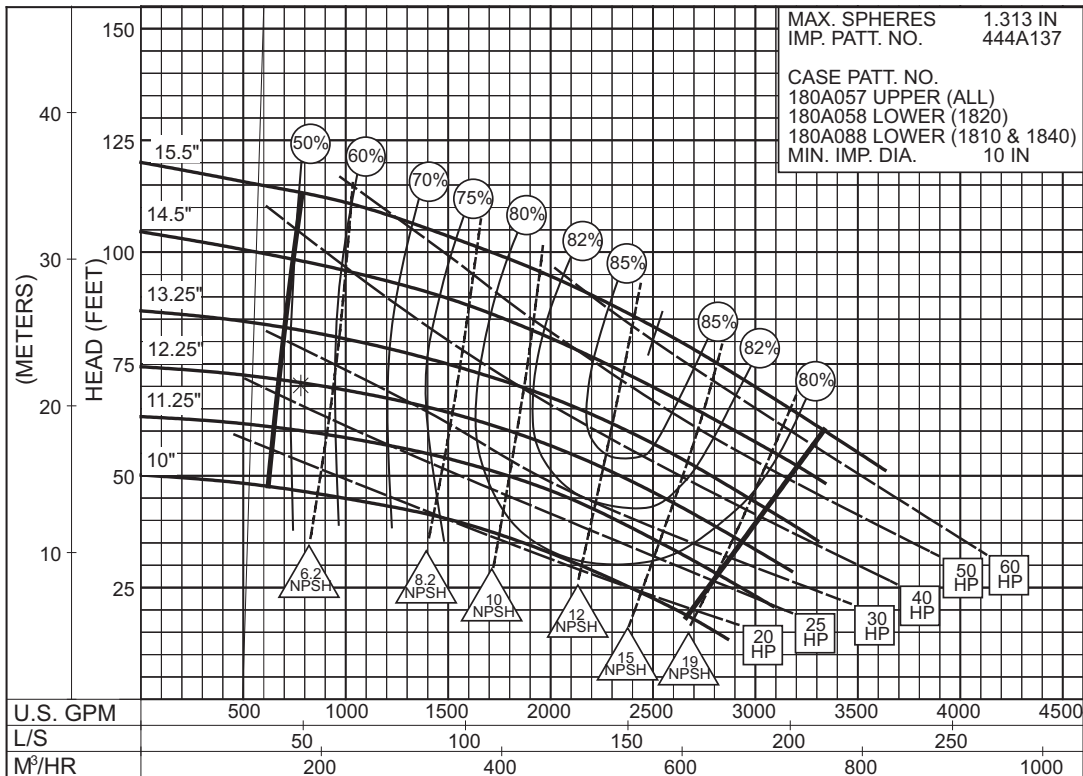
ENCLOSED IMPELLER

**SIZE : 8x10x15B TYPE : 410 IMPELLER : Enclosed R. P. M. : 1775**



**2PC-120356C**

**1775**  
RPM

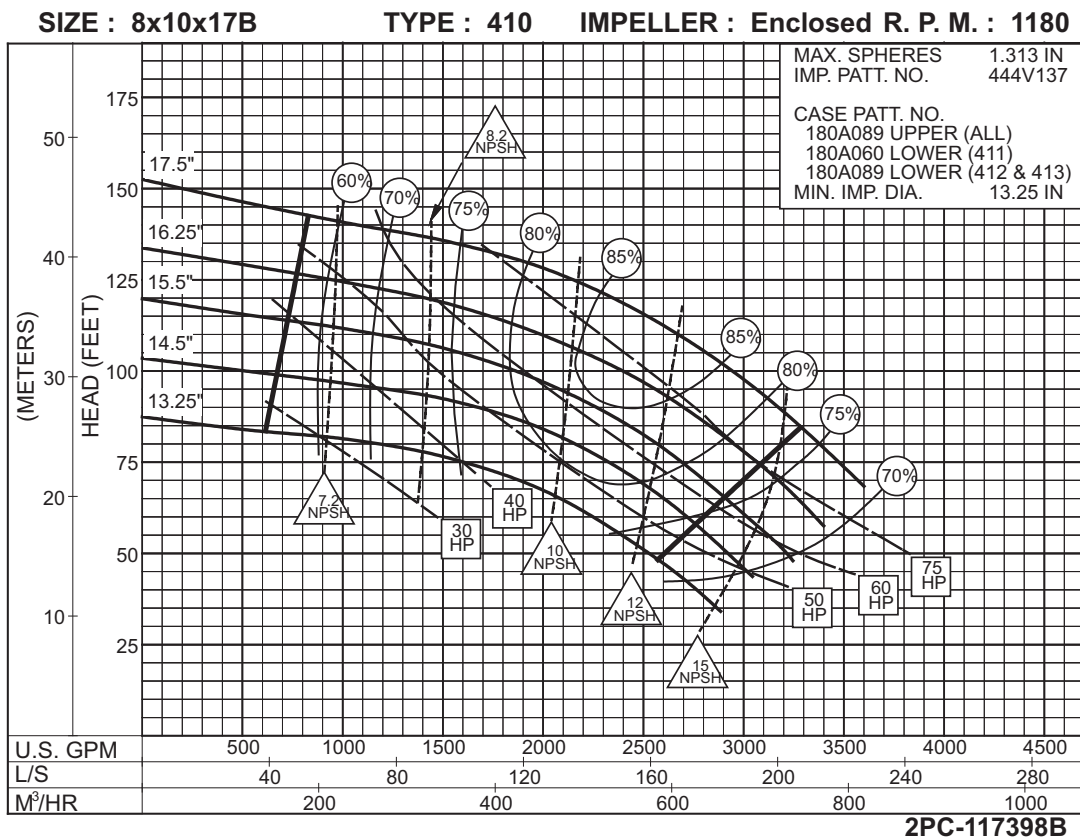
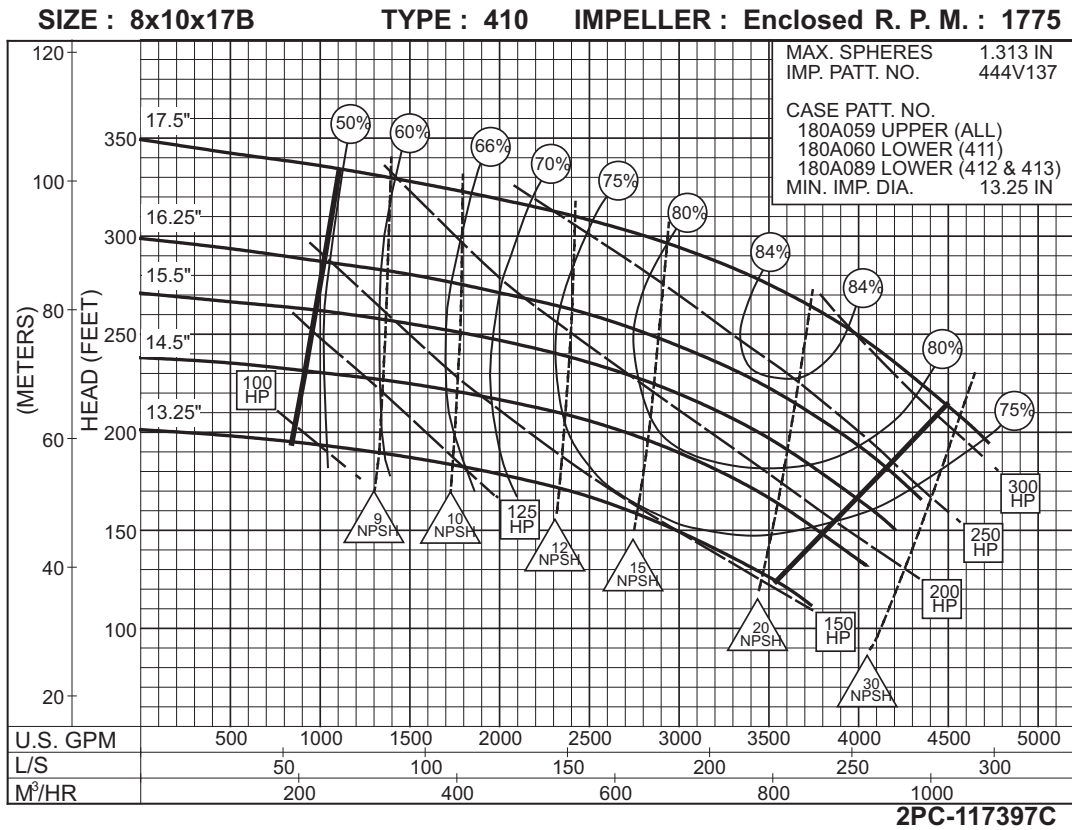


**2PC-120357B**

**1180**  
RPM

# 8 x 10 x 17B SERIES 410

ENCLOSED IMPELLER

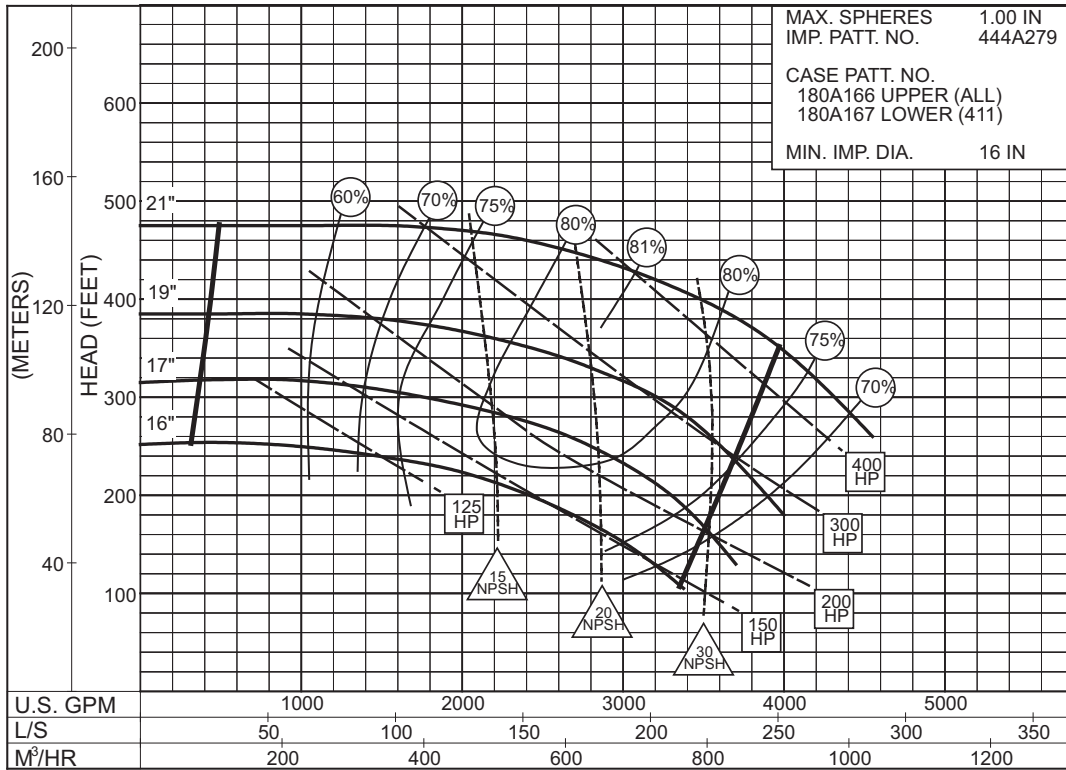




**8 x 10 x 21**  
**SERIES 410**

ENCLOSED IMPELLER

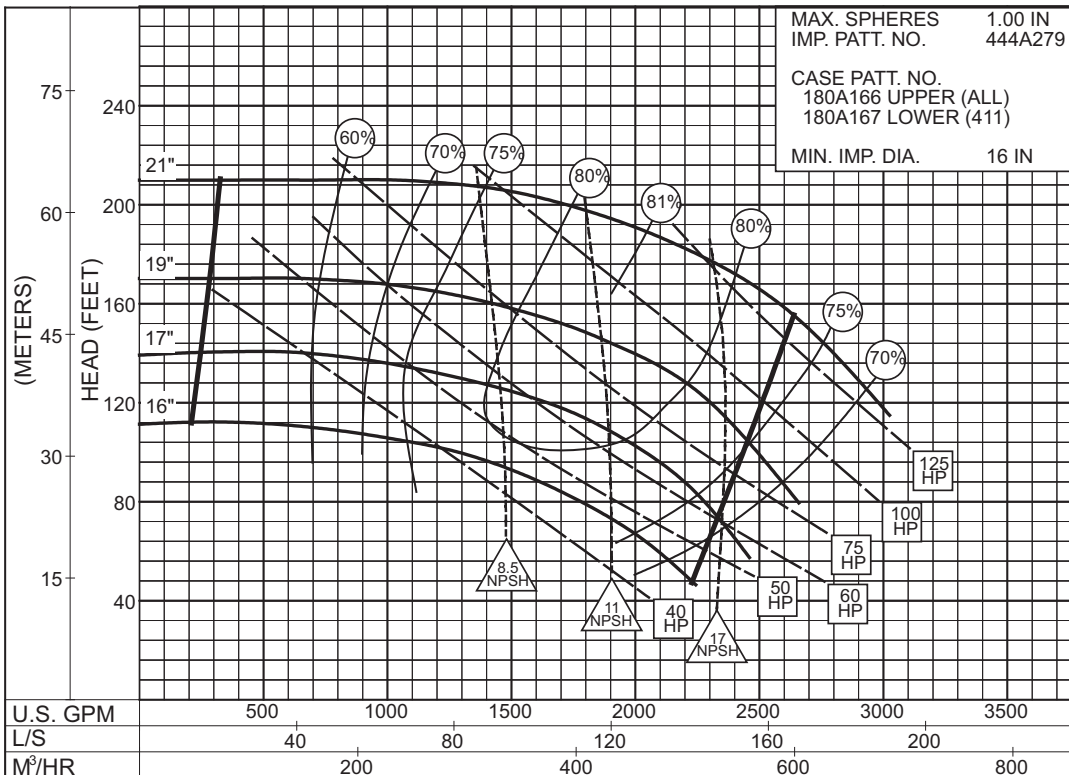
**SIZE : 8x10x21 TYPE : 410 IMPELLER : Enclosed R. P. M. : 1775**



**2PC-140831B**

**1775**  
RPM

**SIZE : 8x10x21 TYPE : 410 IMPELLER : Enclosed R. P. M. : 1180**

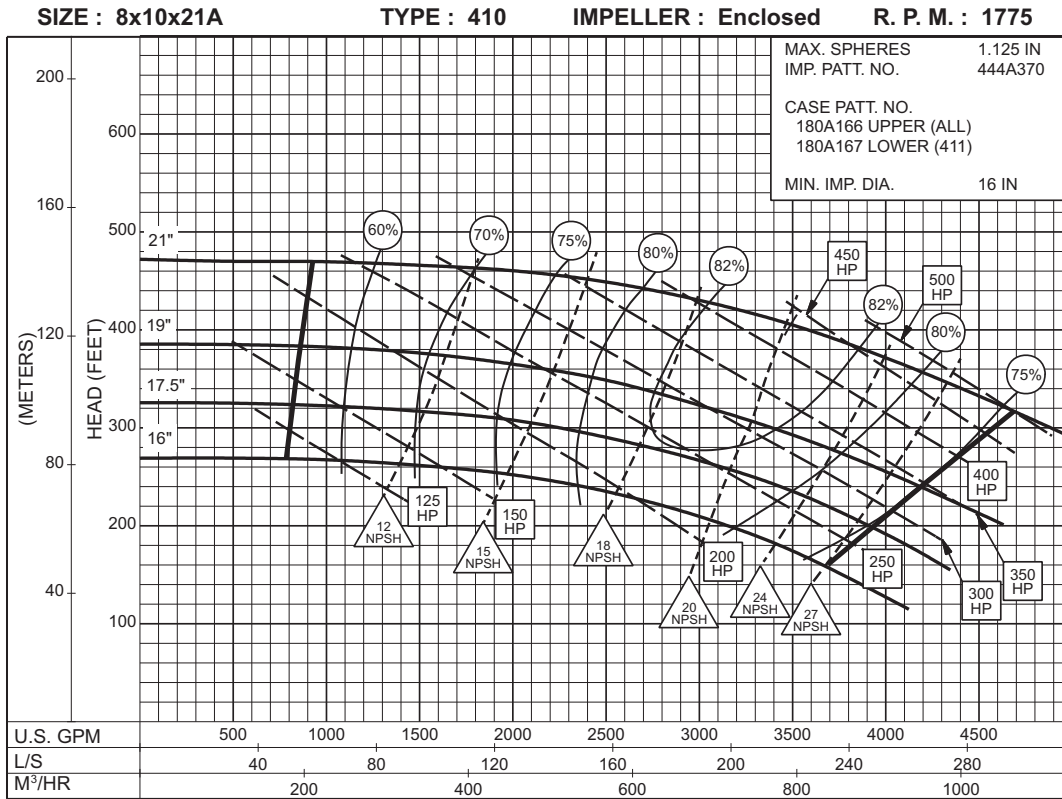


**2PC-140832B**

**1180**  
RPM

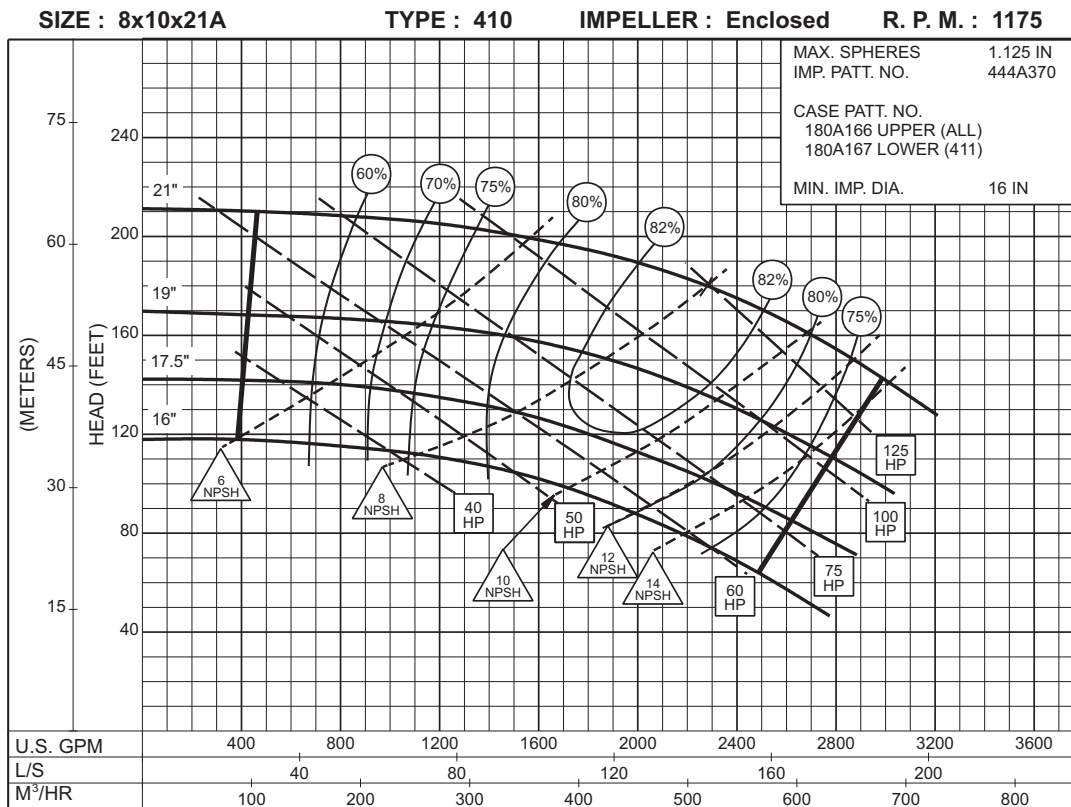
# 8 x 10 x 21A SERIES 410

ENCLOSED IMPELLER



2PC-153772

**1775**  
RPM



2PC-153773

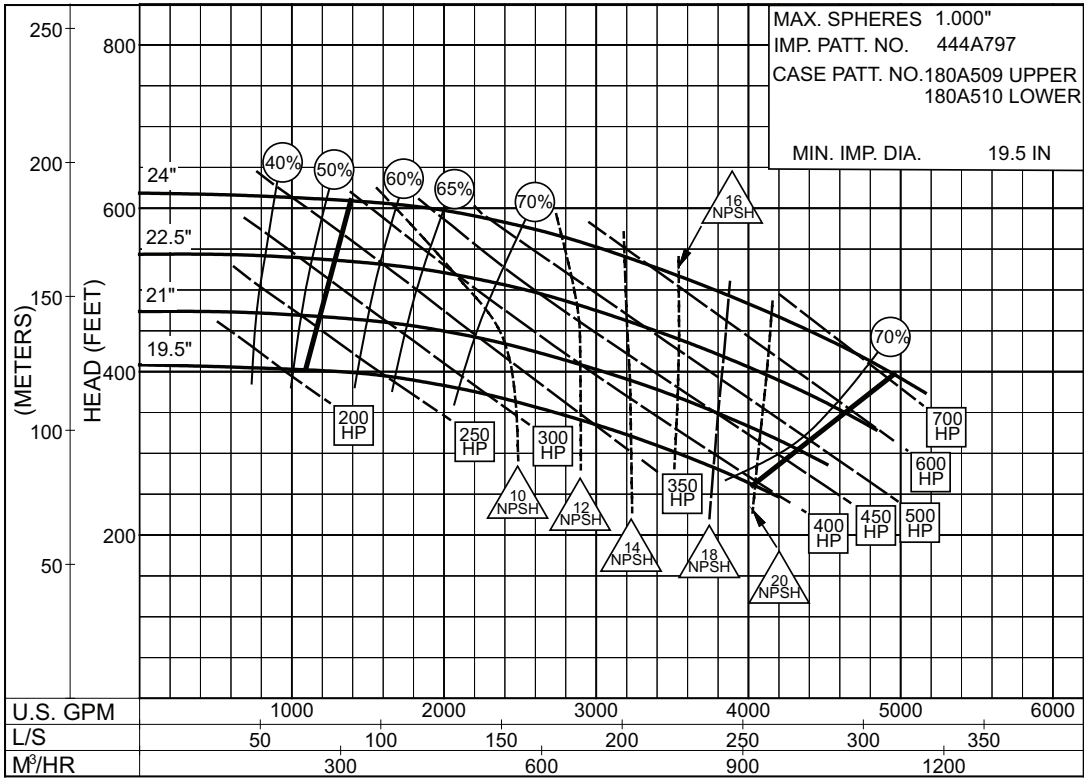
**1175**  
RPM

# 8 x 12 x 24 SERIES 410

## ENCLOSED IMPELLER

**SIZE : 8x12x24      TYPE : 410      IMPELLER : Enclosed      R. P. M. : 1770**

**1770**  
RPM

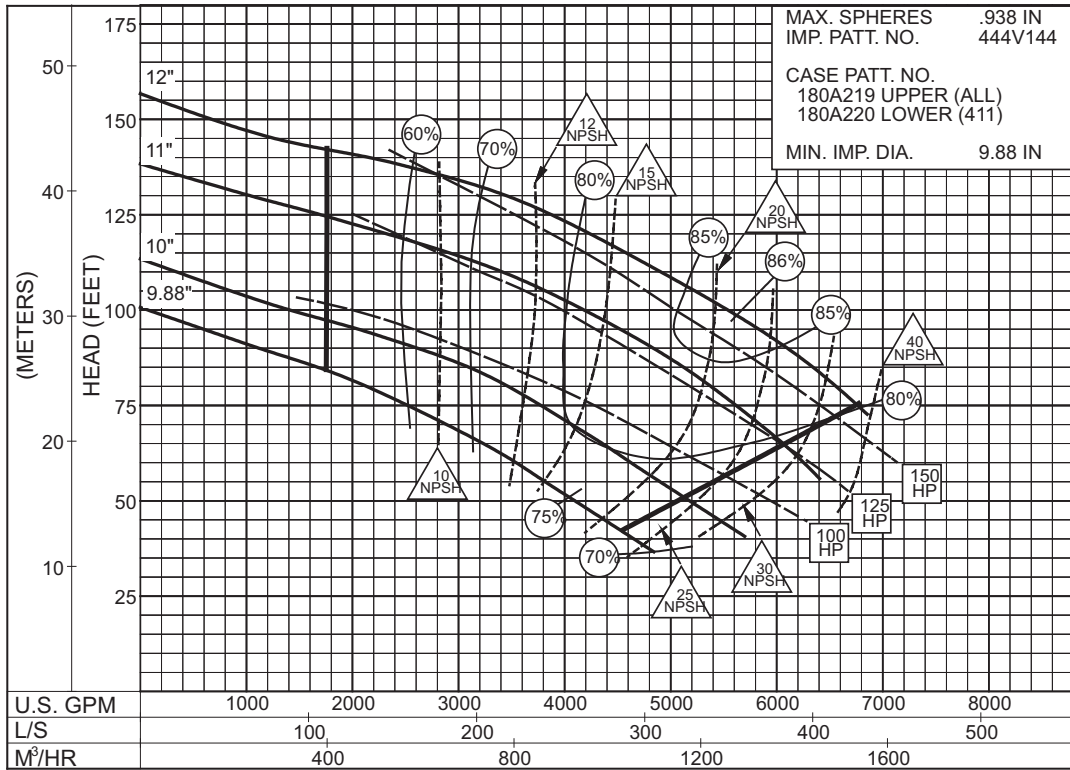


**PC- 197423**

# 10 x 12 x 12B SERIES 410

ENCLOSED IMPELLER

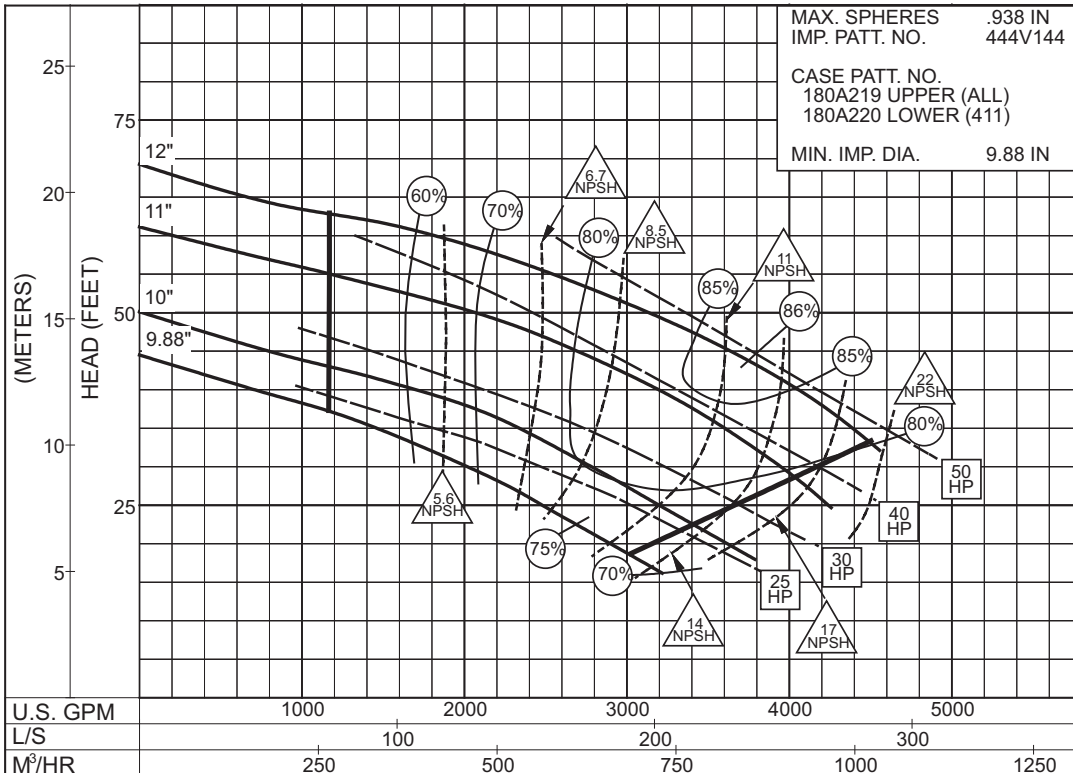
**SIZE : 10x12x12B      TYPE : 410      IMPELLER : Enclosed R. P. M. : 1775**



**2PC-117399A**

**1775**  
RPM

**SIZE : 10x12x12B      TYPE : 410      IMPELLER : Enclosed R. P. M. : 1180**



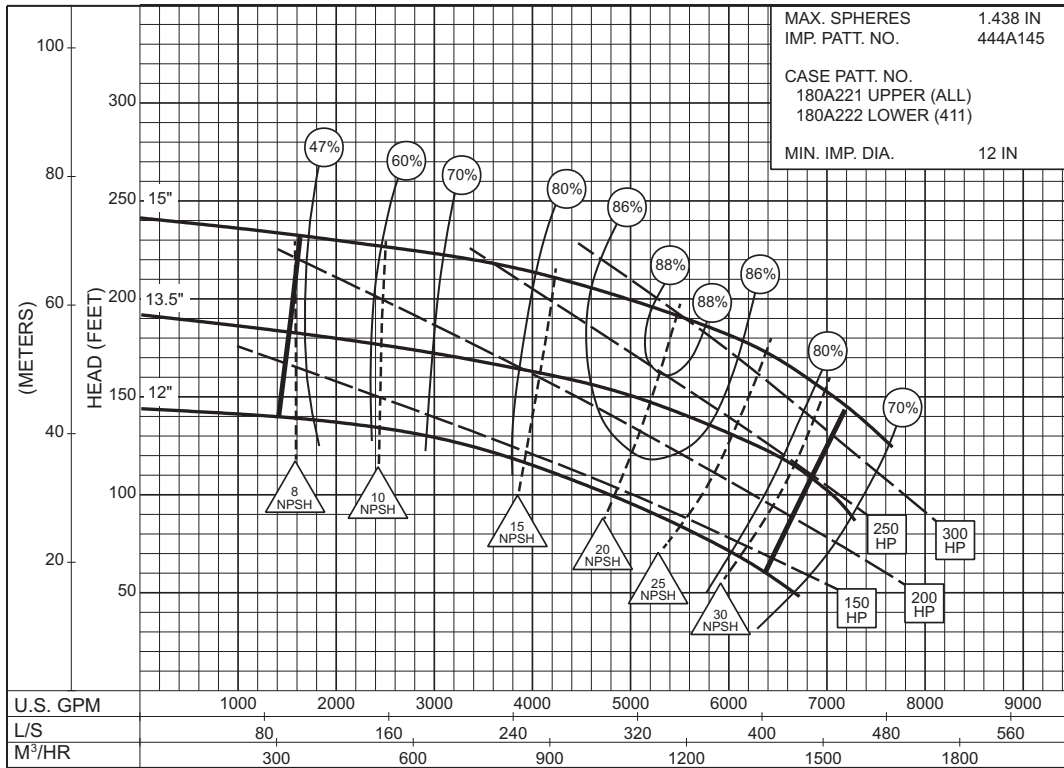
**2PC-117400A**

**1180**  
RPM

**10 x 12 x 15B**  
**SERIES 410**

ENCLOSED IMPELLER

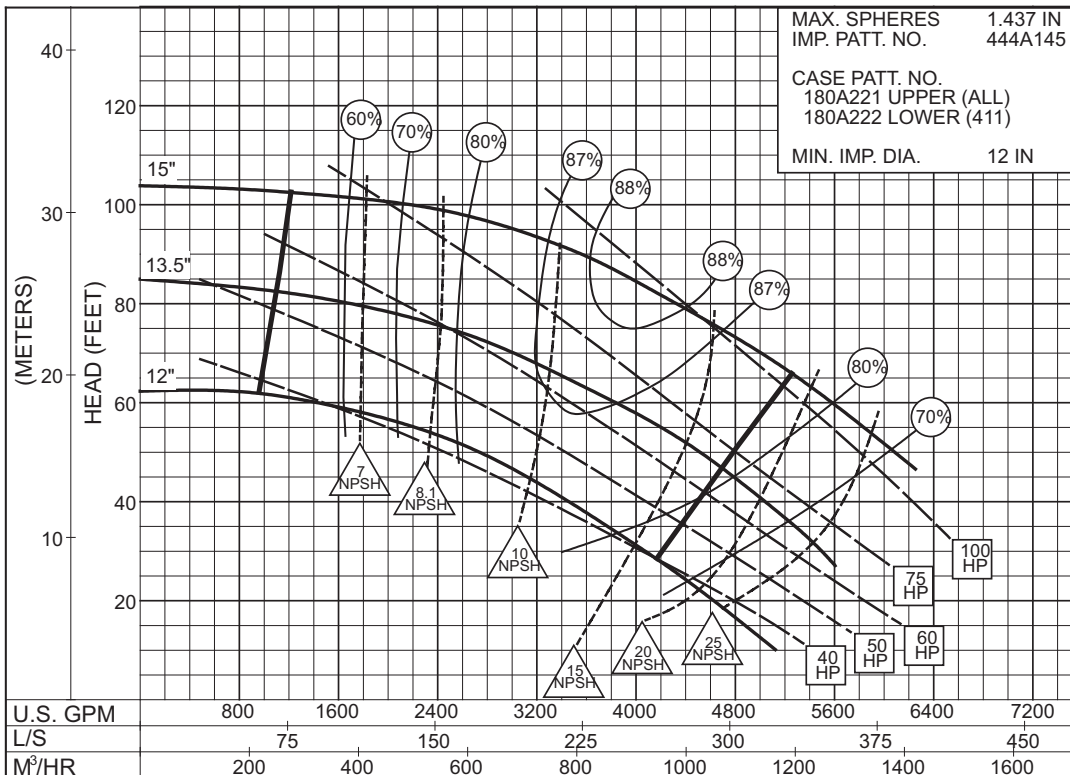
SIZE : 10x12x15B TYPE : 410 IMPELLER : Enclosed R. P. M. : 1775



2PC-117401

**1775**  
RPM

SIZE : 10x12x15B TYPE : 410 IMPELLER : Enclosed R. P. M. : 1180



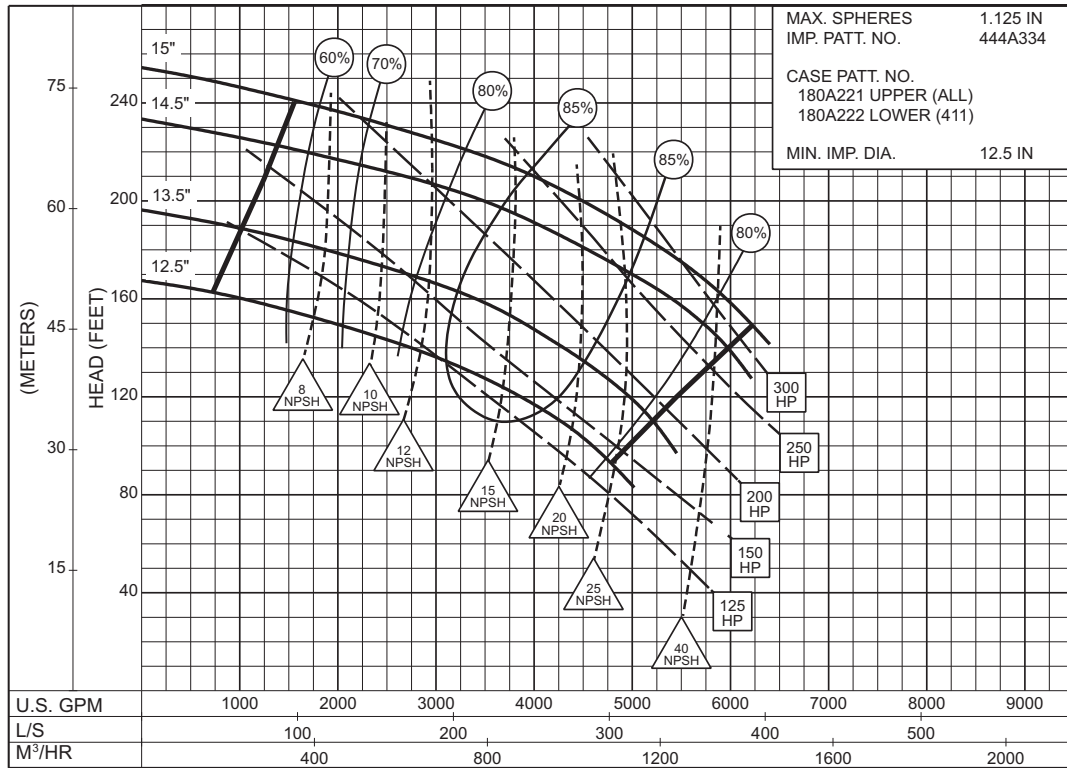
2PC-117402A

**1180**  
RPM

# 10 x 12 x 15C SERIES 410

ENCLOSED IMPELLER

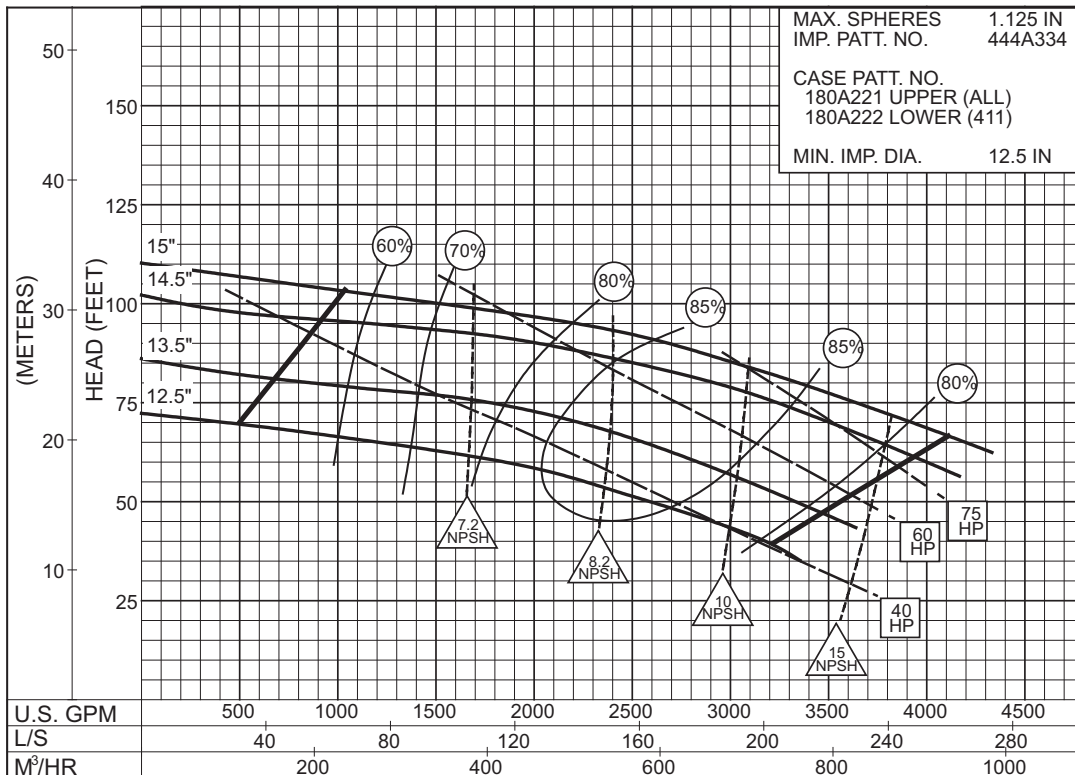
**SIZE : 10x12x15C      TYPE : 410      IMPELLER : Enclosed      R. P. M. : 1775**



**1775**  
RPM

2PC-125182

**SIZE : 10x12x15C      TYPE : 410      IMPELLER : Enclosed R. P. M. : 1180**



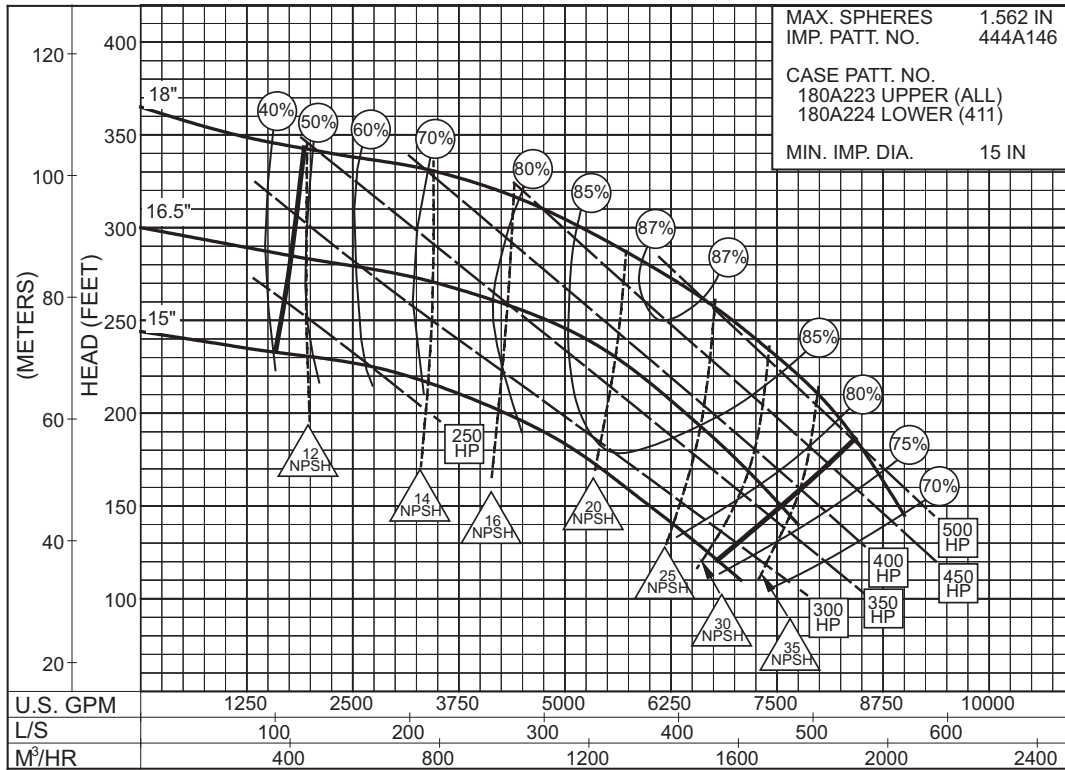
**1180**  
RPM

2PC-125181A

**10 x 12 x 18**  
**SERIES 410**

ENCLOSED IMPELLER

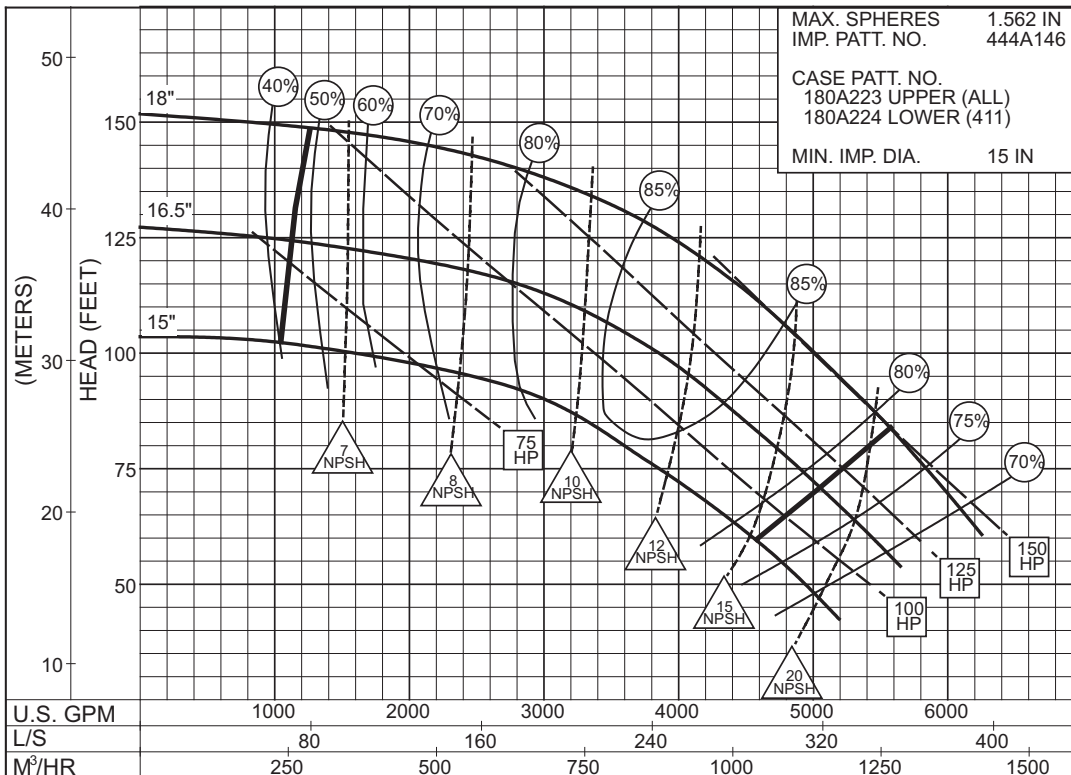
**SIZE : 10x12x18 TYPE : 410 IMPELLER : Enclosed R. P. M. : 1775**



**2PC-117403A**

**1775**  
RPM

**SIZE : 10x12x18 TYPE : 410 IMPELLER : Enclosed R. P. M. : 1180**

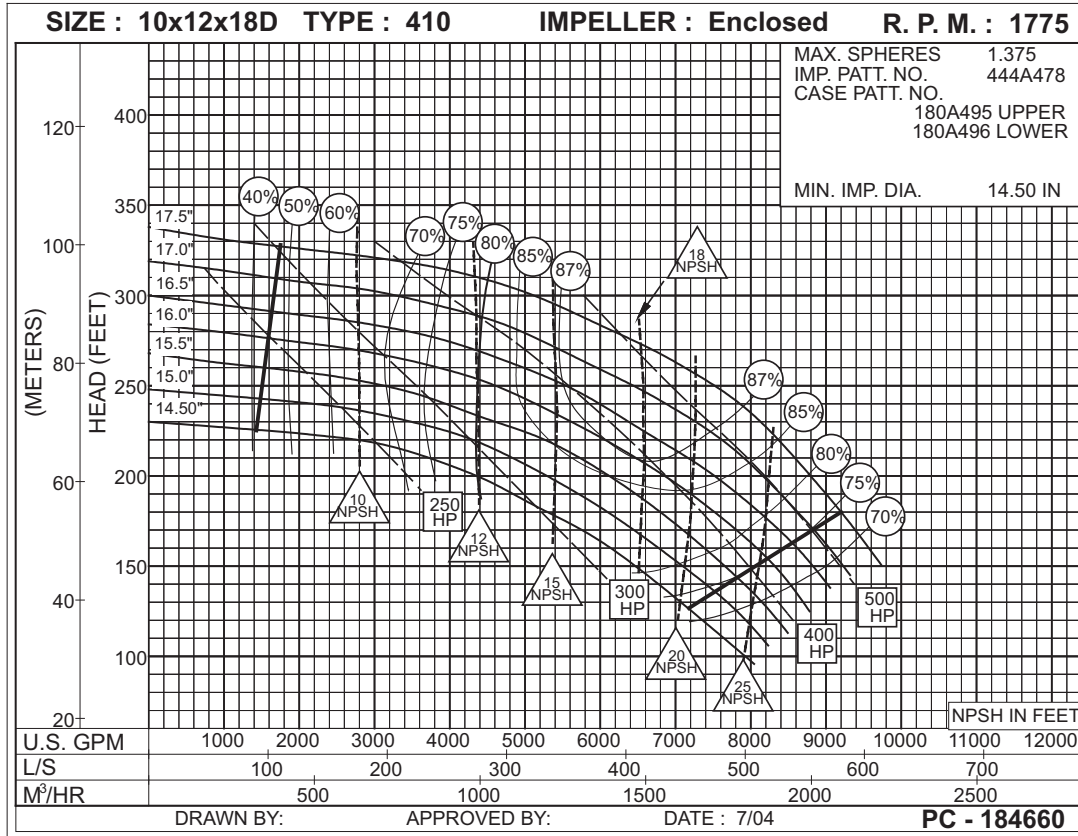


**2PC-117404A**

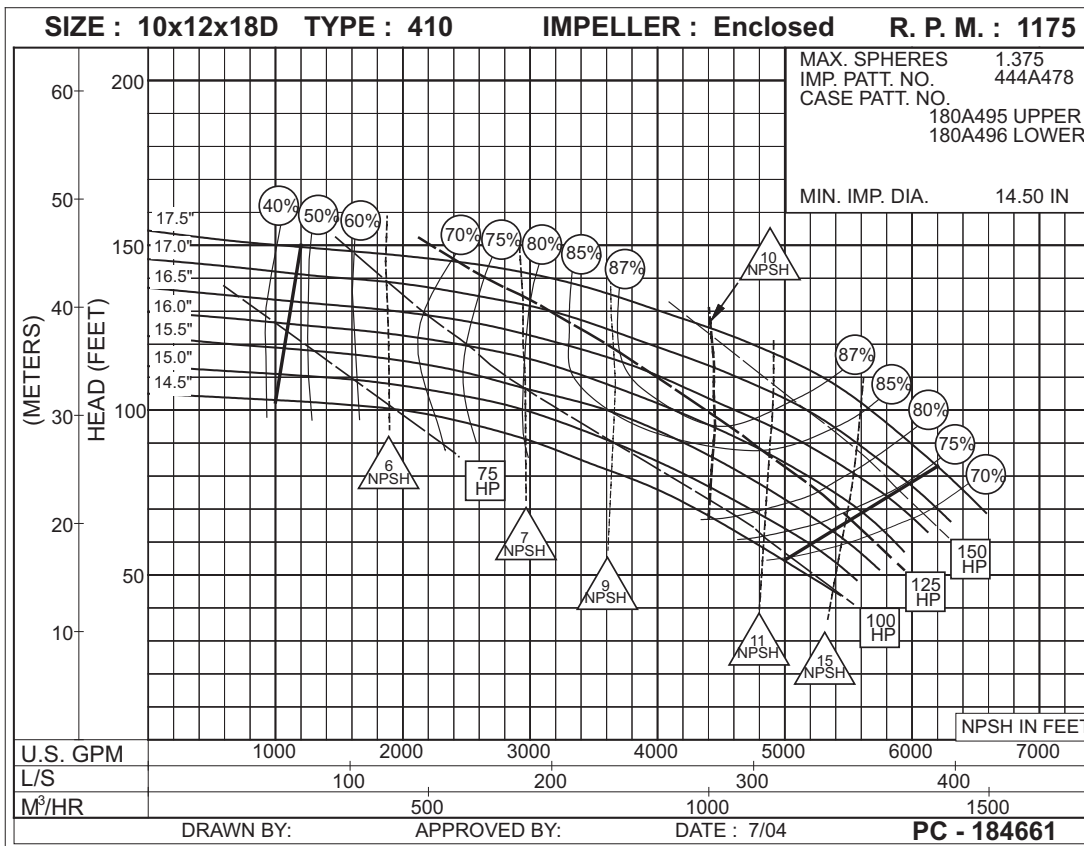
**1180**  
RPM

# 10x12x18D SERIES 410

ENCLOSED IMPELLER



**1775  
RPM**



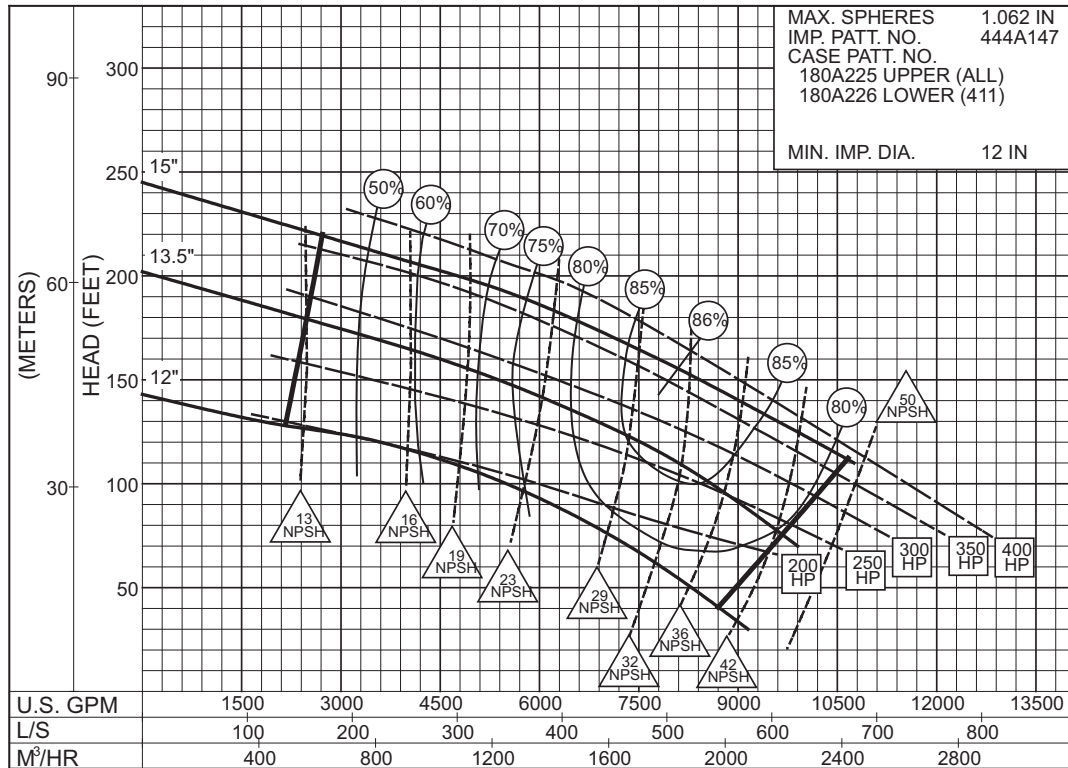
**1175  
RPM**



# 12 x 14 x 15B SERIES 410

ENCLOSED IMPELLER

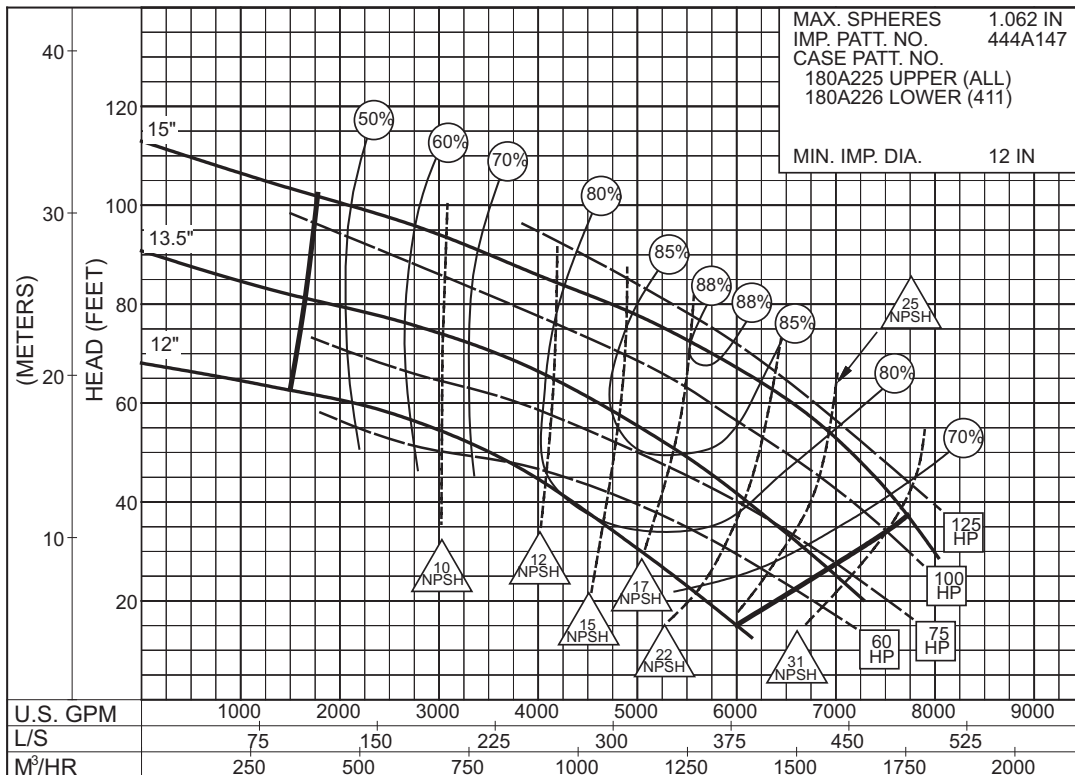
**SIZE : 12x14x15B      TYPE : 410      IMPELLER : Enclosed R. P. M. : 1775**



**2PC-132822B**

**1775**  
RPM

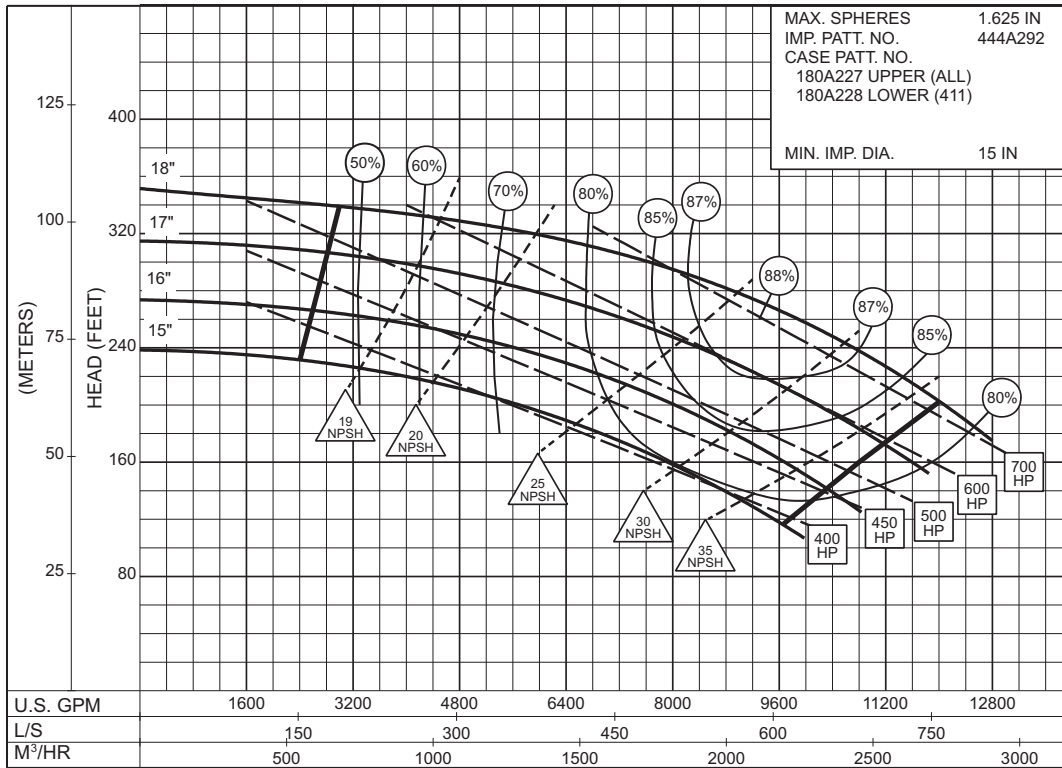
**SIZE : 12x14x15B      TYPE : 410      IMPELLER : Enclosed R. P. M. : 1180**



**2PC-132823B**

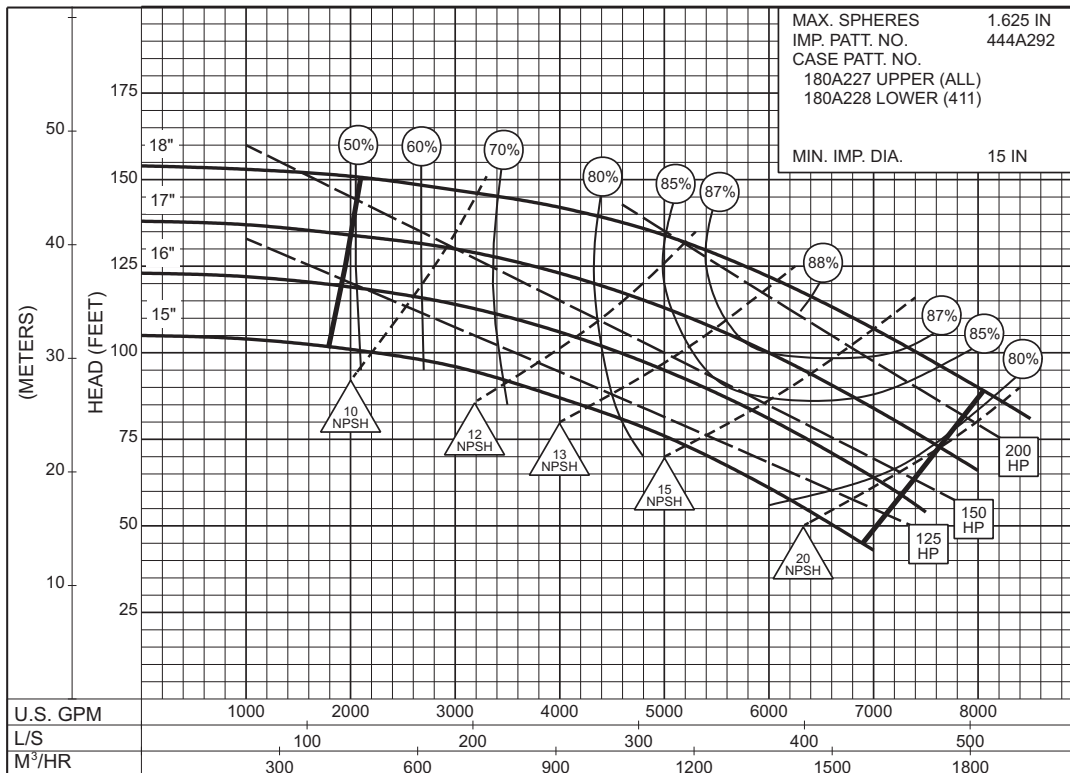
**1180**  
RPM

SIZE : 12x14x18A      TYPE : 410      IMPELLER : Enclosed      R. P. M. : 1775



**1775**  
RPM

SIZE : 12x14x18A      TYPE : 410      IMPELLER : Enclosed      R. P. M. : 1175

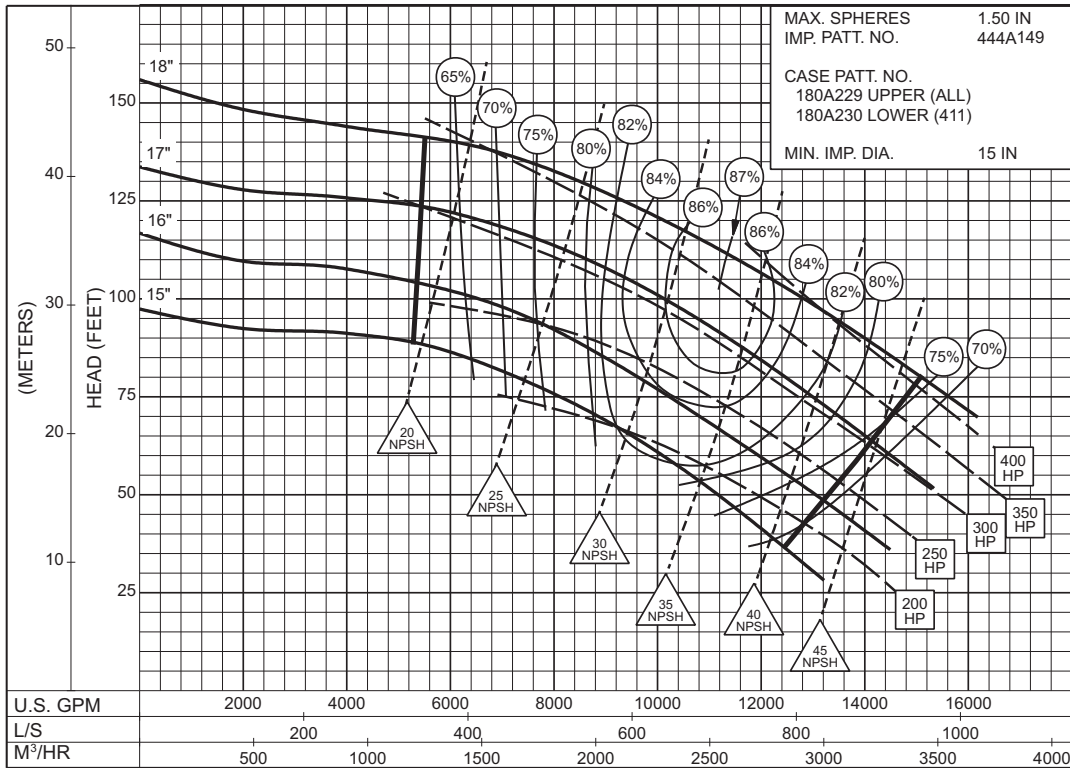


**1175**  
RPM

# 14 x 16 x 18 SERIES 410

ENCLOSED IMPELLER

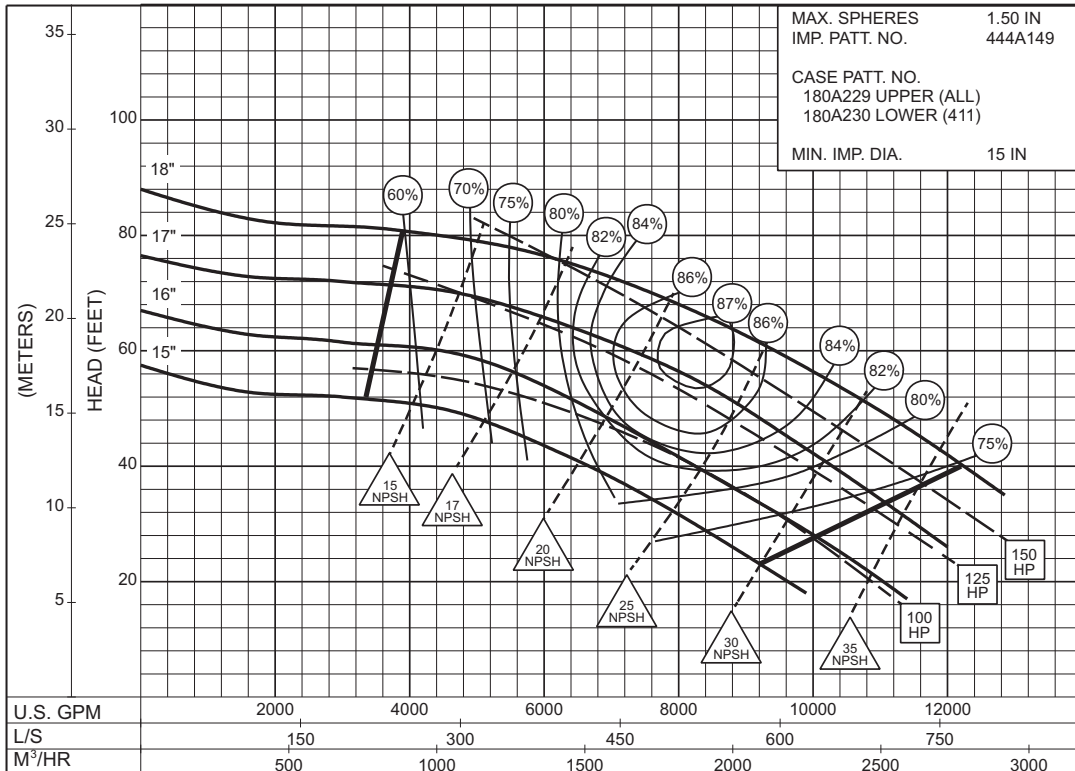
**SIZE : 14x16x18      TYPE : 410      IMPELLER : Enclosed      R. P. M. : 1180**



2PC-132250



**SIZE : 14x16x18      TYPE : 410      IMPELLER : Enclosed      R. P. M. : 885**



2PC-132251

