

SINGLE AND MULTISTAGE SPLIT CASE FIRE PUMPS

481, 483, 485, 491, 492,
AND 495[†]

DIMENSION DATA GUIDE

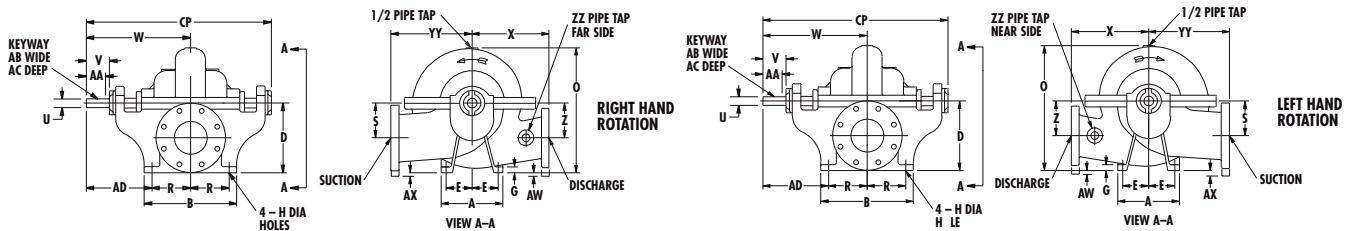
[pentair.com](https://www.pentair.com)

TABLE OF CONTENTS

Model 481 Pumps Single Stage Fire Pumps	3
Model 483 Pumps Single Stage Fire Pumps.....	4
Model 485 Pumps Multistage Fire Pumps	5
Model 491 Pumps Single Stage Fire Pumps	6
Model 492 Pumps Single Stage Fire Pumps.....	7
Model 495 Pumps Multistage Fire Pumps*	8
Model 481 Pumps On Standard Steel Base.....	9
Model 485 Pumps On Standard Steel Base	10
Model 491 Pumps On Standard Steel Base.....	11
Model 492 Pumps On Standard Steel Base	12
Model 495 Pumps On Standard Steel Base*	13
Model 481 Pumps On Steel Drip Rim Base	14
Model 485 Pumps On Steel Drip Rim Base.....	15
Model 491 Pumps On Steel Drip Rim Base	16
Model 492 Pumps On Steel Drip Rim Base	17
Model 495 Pumps On Steel Drip Rim Base*	18

*Indicates obsolete model.

MODEL 481 SINGLE STAGE FIRE PUMPS



PUMP SIZE		CASE BORE	SUCTION POWER SERIES	A	B	D	E	G	H	O	R	S	U	V	W	X	Z	AA	AB	AC	AD	AW	AX	CP	YY	ZZ	
DISCH	MODEL																										
2-1/2	481	10B	3	2	8 (203)	10 (254)	8 (203)	3-1/2 (89)	3/4 (19)	5/8 (16)	16 (406)	4 (102)	4 (102)	1-1/8 (29)	2-7/8 (73)	13-1/2 (343)	9-3/4 (248)	4 (102)	2-1/8 (54)	1/4 (6)	1/8 (3)	9-1/2 (241)	-	-	24 (610)	10 (254)	
3	481	10 10A	4	2	8 (203)	10 (254)	9 (229)	3-1/2 (89)	3/4 (19)	5/8 (16)	16-1/4 (413)	4 (102)	4-1/2 (114)	1-1/8 (29)	2-7/8 (73)	13-1/2 (343)	10 (254)	4-1/2 (114)	2-1/8 (54)	1/4 (6)	1/8 (3)	9-1/2 (241)	-	1/2 (13)	24 (610)	11 (279)	
4	481	11 A/C	5	3	10 (254)	12 (305)	10 (254)	4-1/4 (108)	7/8 (22)	3/4 (19)	18-3/8 (467)	5 (127)	5 (127)	1-3/8 (35)	3 (76)	14-1/2 (368)	11-1/4 (286)	5 (127)	2-3/8 (60)	3/8 (10)	3/16 (5)	9-1/2 (241)	-	1/2 (13)	26 (660)	12-3/4 (324)	
4	481	11 D/E	5	3	10 (254)	12 (305)	10 (254)	4-1/4 (108)	7/8 (22)	3/4 (19)	18-3/8 (467)	5 (127)	5 (127)	1-3/8 (35)	3 (76)	14-1/2 (368)	12 (305)	5 (127)	2-3/8 (60)	3/8 (10)	3/16 (5)	9-1/2 (241)	-	1/2 (13)	26 (660)	12-3/4 (324)	
4	481	15	5	3	10 (254)	12 (305)	11 (279)	4-1/4 (108)	7/8 (22)	3/4 (19)	21-1/8 (537)	5 (127)	5-1/2 (140)	1-3/8 (35)	3 (76)	14-1/2 (368)	13 (330)	5-1/2 (140)	2-3/8 (60)	3/8 (10)	3/16 (5)	9-1/2 (241)	-	-	26 (660)	14 (354)	
5	481	11 1/2 11C/11D	6	4	10 (254)	12 (305)	11 (279)	4-1/4 (108)	7/8 (22)	3/4 (19)	19-3/4 (502)	5 (127)	5-1/2 (140)	1-1/2 (38)	3-1/2 (89)	16 (406)	11-1/4 (286)	5-1/2 (140)	2-7/8 (73)	3/8 (10)	3/16 (5)	11	-	3/4 (19)	28-1/2 (724)	13-1/4 (337)	
5	481	15 15A 15B	6	4	10 (254)	12 (305)	12-1/2 (318)	4-1/4 (108)	7/8 (22)	3/4 (19)	22-1/2 (572)	5 (127)	6-1/4 (159)	1-1/2 (38)	3-1/2 (89)	16 (406)	13-1/4 (337)	6-1/4 (159)	2-7/8 (73)	3/8 (10)	3/16 (5)	11	-	-	28-1/2 (724)	15 (381)	1-1/4 (32)
5	481	17	6	4	10 (254)	12 (305)	12-1/2 (318)	4-1/4 (108)	7/8 (22)	3/4 (19)	22-1/2 (572)	5 (127)	6-1/4 (159)	1-1/2 (38)	3-1/2 (89)	16 (406)	14 (356)	6-1/4 (159)	2-7/8 (73)	3/8 (10)	3/16 (5)	11	-	-	28-1/2 (724)	15 (381)	
6	481	11	8	4	10 (254)	12 (305)	12-1/2 (318)	4-1/4 (108)	7/8 (22)	3/4 (19)	21-7/8 (556)	5 (127)	6-1/4 (159)	1-1/2 (38)	3-1/2 (89)	16 (406)	11-3/4 (298)	6-1/4 (159)	2-7/8 (73)	3/8 (10)	3/16 (5)	11	-	1-1/4 (32)	28-1/2 (724)	14-1/2 (368)	
6	481	11 HH	8	4A	12 (305)	14-1/2 (368)	16-1/2 (419)	5 (127)	1-1/4 (32)	7/8 (22)	25-3/4 (654)	6 (152)	8-5/8 (219)	1-1/2 (38)	3-3/8 (86)	18-1/8 (460)	10 (254)	8-5/8 (219)	2-7/8 (73)	3/8 (10)	3/16 (5)	12-1/8 (308)	-	-	32-7/8 (835)	15 (381)	
6	481	14 HH 14 HB	8	5A	12 (305)	14-1/2 (368)	16-1/2 (419)	5 (127)	1-1/4 (32)	7/8 (22)	27 (686)	6 (152)	7-1/2 (191)	1-3/4 (44)	4-1/8 (105)	20-1/2 (519)	15 (381)	7-1/2 (191)	2-7/8 (73)	3/8 (10)	3/16 (5)	14-1/2 (368)	-	-	36-3/4 (933)	17 (432)	
6	481	15 15B 15C/15E	8	5	12 (305)	14 (356)	13-1/2 (343)	5 (127)	1 (25)	7/8 (22)	24-7/8 (632)	6 (152)	6-3/4 (171)	1-3/4 (44)	4 (102)	18 (457)	14-1/4 (362)	6-3/4 (171)	2-7/8 (73)	3/8 (10)	3/16 (5)	12	-	3/4 (19)	32 (813)	16-3/4 (425)	
6	481	18 18A 18C/18D	8	5	12 (305)	14 (356)	14-3/4 (375)	5 (127)	3/4 (19)	7/8 (22)	27-1/4 (692)	6 (152)	8 (203)	1-3/4 (44)	4 (102)	18 (457)	16 (406)	8 (203)	2-7/8 (73)	3/8 (10)	3/16 (5)	12	-	3/4 (19)	32 (813)	18 (457)	
6	481	20	8	5	12 (305)	14 (356)	14-3/4 (375)	5 (127)	1 (25)	7/8 (22)	27-3/4 (705)	6 (152)	8 (203)	1-3/4 (44)	4 (102)	18 (457)	15-3/4 (400)	8 (203)	2-7/8 (73)	3/8 (10)	3/16 (5)	12	-	3/4 (19)	32 (813)	18 (457)	
8	481	12	10	5	12 (305)	14 (356)	14-3/4 (375)	5 (127)	1-1/4 (32)	7/8 (22)	26-3/8 (670)	6 (152)	8 (203)	1-3/4 (44)	4 (102)	18 (457)	9 (229)	2-7/8 (73)	3/8 (10)	3/16 (5)	12	1-3/4 (44)	2	32 (813)	17-3/4 (451)		
8	481	17 1/2 17C	10	5	12 (305)	14 (356)	14-3/4 (375)	5 (127)	1-1/4 (32)	7/8 (22)	27-1/8 (689)	6 (152)	8 (203)	1-3/4 (44)	4 (102)	18 (457)	17 (432)	8 (203)	2-7/8 (73)	3/8 (10)	3/16 (5)	12	3/4 (19)	2	32 (813)	17-3/4 (451)	
8	481	21 21A	10	6B	20 (508)	22 (559)	18-1/2 (470)	9 (229)	1 (25)	15/16 (24)	32-1/2 (826)	7-1/2 (191)	9-1/2 (241)	2-1/8 (54)	5-7/16 (138)	21-7/8 (556)	18 (432)	9-1/2 (241)	4-3/4 (121)	1/2 (13)	1/4 (6)	14-3/8 (365)	-	-	38 (965)	21 (533)	2 (51)
8	481	24	12	7	15 (381)	22 (559)	26 (660)	6-1/2 (165)	1-1/8 (29)	7/8 (22)	43-7/8 (1114)	10 (254)	15 (381)	2-1/2 (64)	6-5/8 (168)	25-1/4 (641)	20 (508)	15 (381)	5 (127)	5/8 (16)	5/16 (8)	15-1/4 (387)	-	-	43-7/8 (1114)	25 (635)	1-1/4 (32)
10	481	15 15C	12	6B	15 (381)	22 (559)	25 (635)	6-1/2 (165)	1 (25)	7/8 (22)	38-1/2 (978)	10 (254)	13-1/2 (343)	2-1/8 (54)	5-7/16 (138)	21-7/8 (556)	17 (432)	13-1/2 (343)	4-3/4 (121)	1/2 (13)	1/4 (6)	11-7/8 (301)	-	-	38 (965)	20 (508)	1-1/4 (32)
10	481	18	12	6B	15 (381)	22 (559)	25 (635)	6-1/2 (165)	1 (25)	7/8 (22)	39-1/2 (1003)	10 (254)	13-1/2 (343)	2-1/8 (54)	5-7/16 (138)	21-7/8 (556)	18 (432)	13-1/2 (343)	4-3/4 (121)	1/2 (13)	1/4 (6)	11-7/8 (301)	-	-	38 (965)	22 (559)	
10	481	18D	12	7A	15 (381)	22 (559)	25 (635)	6-1/2 (165)	1-1/4 (32)	7/8 (22)	40-1/2 (1029)	10 (254)	12-1/4 (311)	2-1/8 (54)	5 (127)	24-1/4 (616)	20 (508)	12-1/4 (311)	6-5/8 (168)	1/2 (13)	1/4 (6)	14-1/4 (362)	-	-	43 (1092)	24 (610)	2 (51)
12	481	18	14	7	15 (381)	22 (559)	24 (610)	6-1/2 (165)	1 (25)	7/8 (22)	40-1/8 (1019)	10 (254)	15 (381)	2-1/2 (64)	6-5/8 (168)	25-1/4 (641)	18 (457)	15 (381)	5 (127)	5/8 (16)	5/16 (8)	15-1/4 (387)	-	-	43-7/8 (1114)	23 (584)	

NOTES

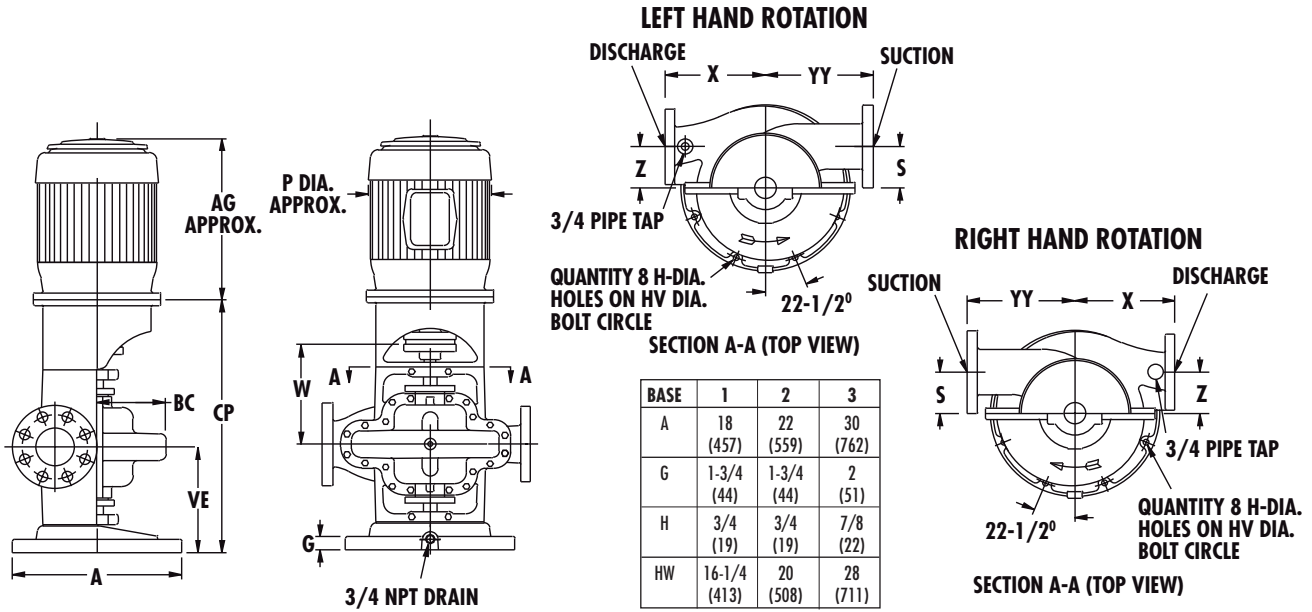
1. All dimensions are in inches (mm).
2. Dimensions may vary ± 3/8" (10).
3. Not for construction purposes unless certified.
4. Suction & discharge flanges ANSI Standard flat face.

STD. 125# SUCTION AND DISCHARGE FLANGES	OPT. 125# SUCTION FLANGE, 250# DISCHARGE FLANGE	OPT. 250# SUCTION AND DISCHARGE FLANGES
--	--	--

* Pump sizes 6-481-11HH & 6-481-14HH are furnished as standard with 125# suction flange and 250# discharge flange.

■ - Indicates obsolete model.
 † - Indicates obsolete model.

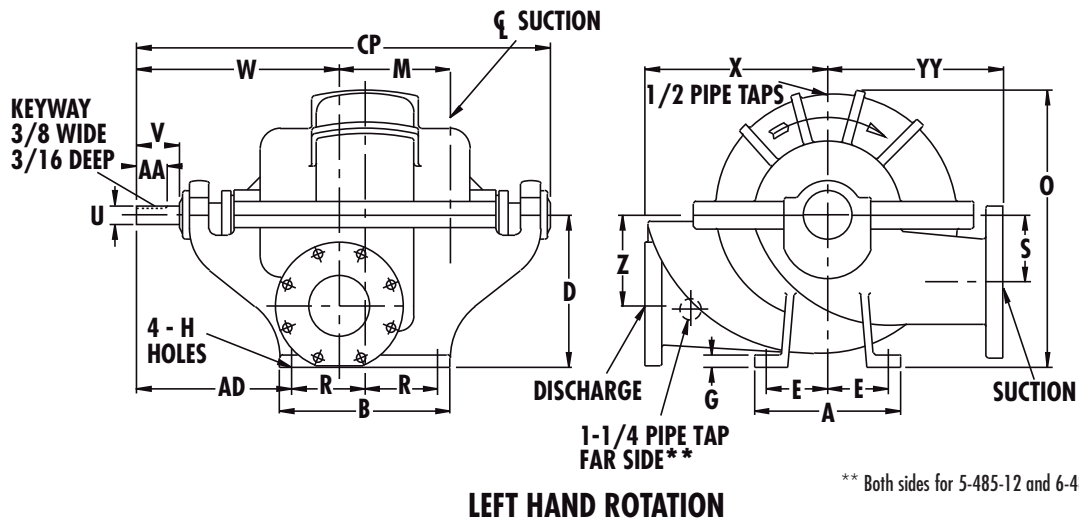
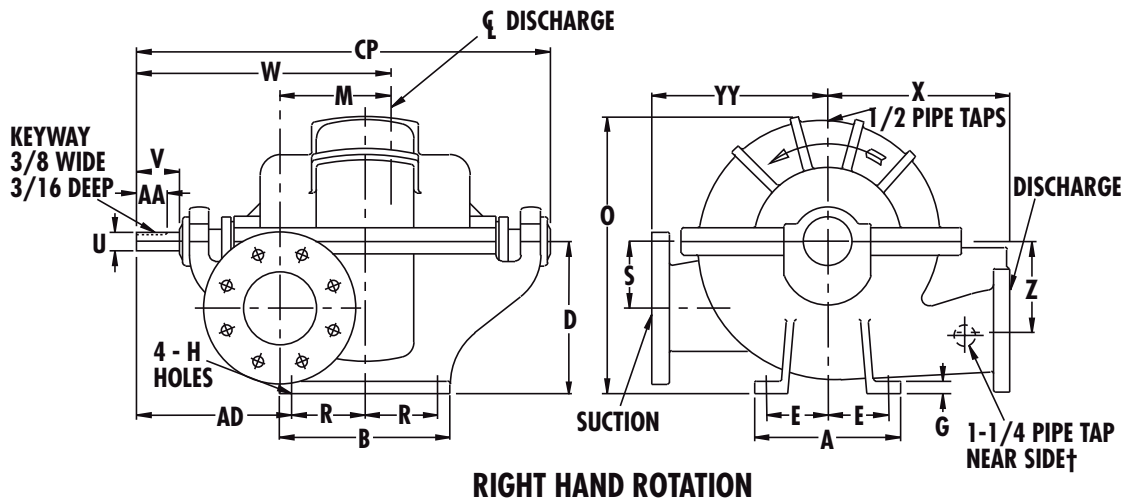
MODEL 483 SINGLE STAGE FIRE PUMPS



PUMP SIZE		DISCH	MODEL	CASE BORE	SUCTION	POWER SERIES	BASE	S	W	X	Z	BC	VE	YY	MOTOR FRAME																
															213HP	215HP	254HP	256HP	284HP	286HP	324HP	326HP	364HP	365HP	404HP	405HP	444HP	445HP			
																P		AG													
2-1/2	483	10"/10B	3	2	1	4 (102)	13-1/2 (343)	9-3/4 (248)	4 (102)	8 (203)	13 (330)	10 (254)	30 (762)	10 (254)	30	30	30	30	32	32	32	32	32	32							
3	483	10	4	2	1	4-1/2 (114)	13-1/2 (343)	10 (254)	4-1/2 (114)	7-3/16 (183)	13 (330)	11 (279)	30 (762)	30	30	30	30	32	32	32	32	32	32								
4	483	11 1/8"/11C	5	3	2	5 (127)	14-1/2 (368)	11-1/4 (286)	5 (127)	8-5/16 (211)	14 (356)	12-3/4 (324)	30 (762)			33	33	35	35	35	35	35	35	35	35						
4	483	11 1/8"/11D	5	3	2	5 (127)	14-1/2 (368)	12 (305)	5 (127)	8-5/16 (211)	14 (356)	12-3/4 (324)	30 (762)			33	33	35	35	35	35	35	35	35	35						
4	483	15	5	3	2	5-1/2 (140)	14-1/2 (368)	13 (330)	5-1/2 (140)	9 (229)	14 (356)	14 (356)	30 (762)			33	35	35	35	35	35	35	35	35	35						
5	483	11 1/8"/11B	6	4	2	5-1/2 (140)	16 (406)	11-1/4 (286)	5-1/2 (140)	8-3/4 (222)	15 (381)	13-1/4 (337)	30 (762)			35	35	37	37	37	37	37	37	37	37						
5	483	15	6	4	2	6-1/4 (159)	16 (406)	13-1/4 (337)	6-1/4 (159)	10-1/16 (256)	15 (381)	15 (381)	30 (762)					37	37	37	37	37	37	37	37						
5	483	17	6	4	2	6-1/4 (159)	16 (406)	14 (356)	6-1/4 (159)	10-1/16 (256)	15 (381)	15 (381)	30 (762)						37	37	37	37	37	37	37						
6	483	11	8	4	2	6-1/4 (159)	16 (406)	11-3/4 (298)	6-1/4 (159)	9-1/4 (935)	15 (381)	14-1/2 (368)	30 (762)			35	37	37	37	37	37	37	37	37	37						
6	483	15/15B	8	5	3	6-3/4 (171)	18 (457)	14-1/4 (362)	6-3/4 (171)	11-5/16 (287)	17 (432)	16-3/4 (425)	30 (762)						41	41	41	41	41	41	41						
6	483	18 1/8"/18B	8	5	3	8 (203)	18 (457)	16 (406)	8 (203)	12-1/2 (318)	17 (432)	18 (457)	30 (762)						41	41	41	41	41	41	41						
6	483	20	8	5	3	8 (203)	18 (457)	15-3/4 (400)	8 (203)	12-15/16 (239)	17 (432)	18 (457)	30 (762)						41	41	41	41	41	41	41						
8	483	12	10	5	3	8 (203)	18 (457)	17 (432)	9 (229)	11-9/16 (294)	17 (432)	17-3/4 (451)	30 (762)						41	41	41	41	41	41	41						
8	483	17B	10	5	3	8 (203)	18 (457)	17 (432)	8 (203)	12-3/8 (314)	17 (432)	17-3/4 (451)	30 (762)												41	41	41	41	41	41	

- NOTES
- 1. All dimensions are in inches (mm).
 - 2. Dimensions may vary ± 3/8" (10).
 - 3. Not for construction purposes unless certified.
 - 4. Suction and discharge flanges are ANSI standard flat face.
 - 5. Motor dimensions "AG" and "P" will vary based on manufacturer and style of motor. Conduit box is shown in approximate location.
- † - Indicates obsolete model.

MODEL 485 MULTISTAGE FIRE PUMPS



** Both sides for 5-485-12 and 6-485-12

PUMP SIZE		SUCTION	POWER SERIES	A	B	D	E	G	H	M	O	R	S	U	V	RIGHT HAND ROTATION	LEFT HAND ROTATION	AA	AD	CP	YY			
DISCH	MODEL															W	W					X	Z	
4	485	15	5	3	10 (254)	12 (304)	11 (279)	4-1/4 (108)	7/8 (19)	3/4 (181)	7-1/8 (181)	23 (584)	5 (127)	5 (127)	1-3/8 (35)	3 (76)	18-7/8 (479)	15-1/8 (384)	13 (330)	6-1/2 (165)	2 (51)	12 (304)	31 (787)	13-1/2 (343)
5	485	12	5	4A	15 (381)	16 (406)	14 (356)	6-1/2 (165)	1 (25)	7/8 (22)	6-5/8 (168)	24-1/4 (616)	7 (179)	7 (179)	1-1/2 (38)	3-5/8 (92)	20-7/8 (530)	18-1/8 (460)	13 (330)	7 (179)	2-1/2 (64)	12-1/2 (318)	35-3/8 (899)	13 (330)
5	485	15	6	4	12 (304)	14 (356)	12-1/2 (318)	5 (127)	1 (25)	7/8 (22)	9-1/8 (232)	24-1/2 (622)	6 (152)	5-1/2 (140)	1-1/2 (38)	3-1/2 (89)	21-1/8 (537)	16-7/8 (429)	15 (381)	7-1/2 (191)	2 (51)	13 (330)	34-1/2 (876)	15-7/16 (392)
6	485	12 12A	6	5A	16 (406)	19 (483)	15 (381)	7 (179)	1 (25)	7/8 (22)	7-1/2 (191)	26-1/4 (667)	8-1/2 (216)	8 (203)	1-3/4 (44)	4 (102)	22-7/8 (581)	19-5/8 (498)	14 (356)	8 (203)	2-3/4 (70)	12-3/4 (324)	38-1/2 (978)	14 (356)
6	485	16/ 16B	8	5	12 (305)	14 (356)	16.50 (419)	5 (127)	1 (25)	.88 (22)	10.50 (267)	33.50 (851)	6 (152)	8.25 (210)	1.75 (44)	4 (102)	23.63 (600)	18.38 (467)	19 (483)	7.75 (197)	2.88 (73)	15 (381)	37.88 (962)	17 (432)
6	485	17/ 17A/17B	8	5	12 (304)	14 (356)	14-3/4 (375)	5 (127)	1 (25)	7/8 (22)	11 (279)	28-1/4 (718)	6 (152)	7 (179)	1-3/4 (44)	4 (102)	24-1/2 (622)	17-1/2 (445)	16 (406)	9 (229)	2-7/8 (73)	15 (381)	38 (965)	16-1/2 (419)

NOTES

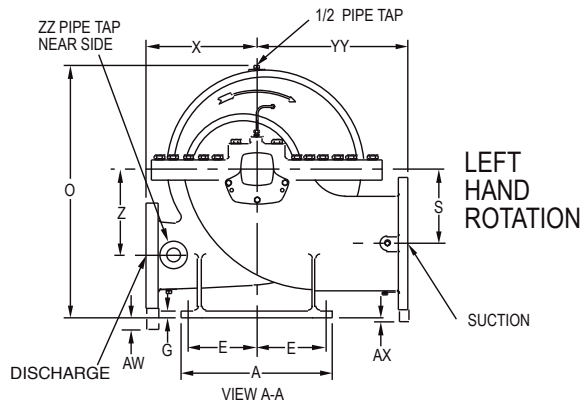
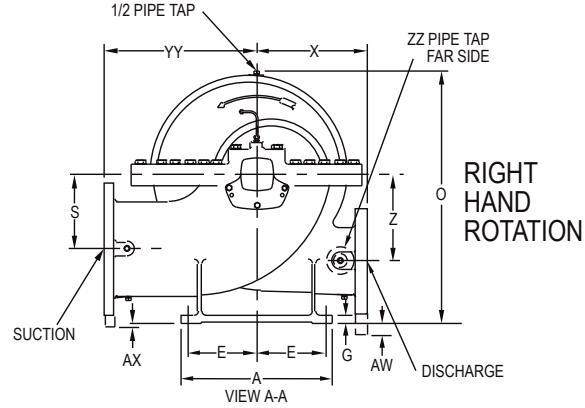
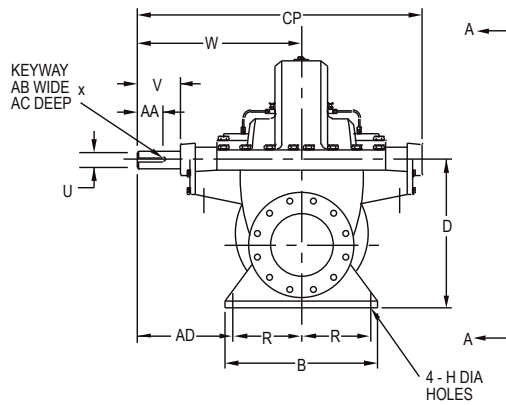
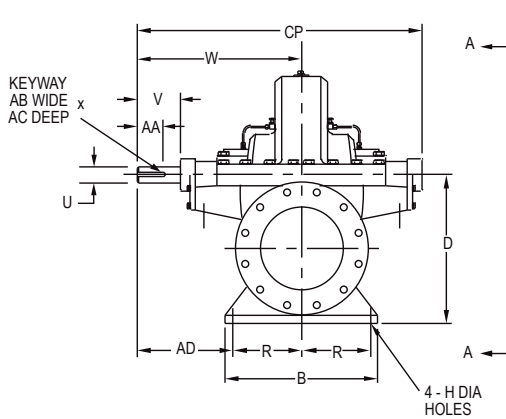
- All dimensions are in inches (mm).
- Dimensions may vary ± 3/8" (10).
- Not for construction purposes unless certified.
- Suction & discharge flanges ANSI Standard flat face.

STD. *125# SUCTION FLANGE, *250# DISCHARGE FLANGE	OPT. *250# SUCTION AND DISCHARGE FLANGES
---	--

* 150# AND 300# OR 300# AND 300# SUCTION AND DISCHARGE DUCTILE IRON FOR 5-485-12 AND 6-485-12

† - Indicates obsolete model.

MODEL 491 SINGLE STAGE FIRE PUMPS



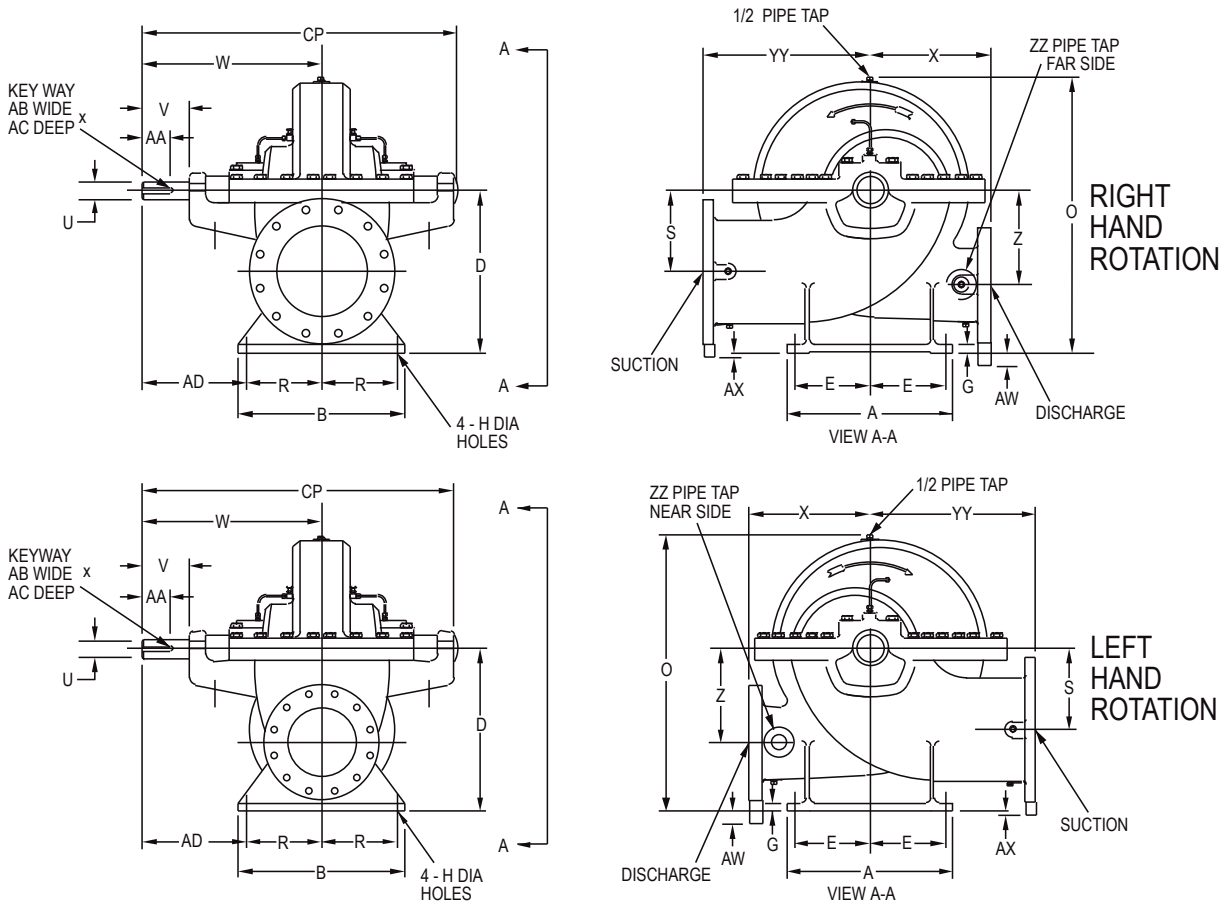
PUMP SIZE			SUCTION	DIMENSIONS (INCHES)																						
DISCH	MODEL	CASE BORE		A	B	D	E	G	H	O	R	S	U	V	W	X	Z	AA	AB	AC	AD	AW	AX	CP	YY	ZZ
3	491	9A 9C	5	14-1/2 (368)	14-1/2 (368)	12 (304)	6-1/4 (159)	1 (25)	7/8 (22)	18-7/8 (479)	6-1/4 (159)	6-1/8 (156)	1-1/8	3-5/16 (84)	14-5/8 (371)	11 (279)	6-1/8 (155)	2-1/2 (63)	1/4 (6)	1/8 (3)	8-3/8 (212)	-	-	25-15/16 (658)	12 (304)	
4	491	8A	6	11 (279)	11 (279)	9-3/4 (245)	4-5/8 (117)	3/4 (25)	5/8 (16)	16-1/8 (410)	4-5/8 (117)	5-3/4 (146)	1-1/8 (28)	3-1/4 (83)	14-5/8 (371)	10 (254)	5-1/2 (140)	2-1/2 (63)	1/4 (6)	1/8 (3)	10 (254)	3/4 (19)	2-1/4 (57)	25-15/16 (658)	11-1/4 (285)	
4	491	11A 11C	6	14-1/2 (368)	14-1/2 (368)	13-3/4 (349)	6-1/4 (159)	1 (25)	7/8 (22)	22 (559)	6-1/4 (159)	6-7/8 (174)	1-1/2 (38)	3-1/2 (88)	16-5/8 (422)	11-1/4 (285)	7-1/8 (180)	2-3/8 (60)	3/8 (9)	3/16 (4)	10-3/8 (263)	-	-	29-11/16 (754)	14 (355)	3/4
4	491	14C	6	18 (457)	18 (457)	13-3/4 (349)	8 (203)	1-1/8 (28)	7/8 (22)	23-5/8 (600)	8 (203)	6-7/8 (174)	1-1/2 (38)	3-1/2 (88)	17-5/8 (447)	13 (330)	8-3/8 (212)	2-3/8 (60)	3/8 (9)	3/16 (4)	9-5/8 (244)	-	-	31-11/16 (804)	15-1/4 (387)	
5	491	14A	8	18 (457)	18 (457)	16-1/4 (412)	8 (203)	1-1/8 (28)	7/8 (22)	27-1/16 (687)	8 (203)	8-1/4 (209)	1-1/2 (38)	3-1/2 (88)	17-5/8 (447)	13-1/2 (342)	9-3/4 (247)	2-3/8 (60)	3/8 (9)	3/16 (4)	9-5/8 (244)	-	-	31-11/16 (804)	17-1/4 (438)	
5	491	18A	8	18 (457)	18 (457)	16-1/4 (412)	8 (203)	1-1/8 (28)	7/8 (22)	28-3/8 (720)	8 (203)	8-1/8 (206)	2-1/8 (53)	4-3/8 (111)	18-7/8 (479)	15 (381)	10-5/8 (268)	3-1/2 (88)	1/2 (12)	1/4 (6)	10-7/8 (276)	-	-	33-3/8 (847)	18-3/4 (476)	
6	491	12A 12B	6	14-1/2 (368)	14-1/2 (368)	13-3/4 (349)	6-1/4 (159)	1 (25)	7/8 (22)	22 (559)	6-1/4 (159)	6-7/8 (174)	1-1/2 (38)	3-1/2 (88)	16-5/8 (422)	20-1/2 (520)	7-1/8 (180)	2-3/8 (60)	3/8 (9)	3/16 (4)	10-3/8 (263)	-	-	29-11/16 (754)	14 (355)	
6	491	14A 14C	10	18 (457)	18 (457)	18-3/4 (476)	8 (203)	1-1/8 (28)	7/8 (22)	30-1/16 (763)	8 (203)	9-3/8 (238)	2-1/8 (53)	4-3/8 (111)	20-1/8 (511)	13-1/4 (337)	10 (254)	3-1/2 (88)	1/2 (12)	1/4 (6)	12-1/8 (308)	-	-	35-7/8 (911)	18 (457)	
6	491	18C	10	22 (558)	22 (558)	18-3/4 (476)	10 (254)	1-1/8 (28)	7/8 (22)	32 (813)	10 (254)	9-3/8 (238)	2-1/8 (53)	4-3/8 (111)	20-1/8 (511)	16 (406)	11-3/4 (295)	3-1/2 (88)	1/2 (12)	1/4 (6)	10-1/8 (263)	-	-	35-7/8 (911)	20 (508)	
6	491	19A	10	22 (558)	22 (558)	18-3/4 (476)	10 (254)	1-1/8 (28)	7/8 (22)	33-5/16 (846)	10 (254)	9-3/8 (238)	2-1/2 (63)	6 (152)	22-5/8 (574)	18 (457)	12-1/8 (307)	4 (101)	5/8 (15)	5/16 (7)	12-5/8 (320)	-	-	39-1/4 (996)	22 (558)	1
8	491	14A	12	22 (558)	22 (558)	21-1/2 (546)	10 (254)	1-1/8 (28)	7/8 (22)	33-5/8 (854)	10 (254)	10-3/4 (273)	2-1/8 (53)	4-3/8 (111)	20-1/2 (520)	16 (406)	10-3/4 (273)	3-1/2 (88)	1/2 (12)	1/4 (6)	10-1/2 (266)	-	-	36-5/8 (930)	22 (558)	
8	491	18A	12	22 (558)	22 (558)	21-1/2 (546)	10 (254)	1-1/8 (28)	7/8 (22)	36 (914)	10 (254)	10-3/4 (273)	2-1/2 (63)	6 (152)	23-3/4 (603)	16 (406)	12-1/2 (317)	4 (101)	5/8 (15)	5/16 (7)	13-3/4 (349)	-	-	41-1/2 (1054)	22 (558)	
10	491	20	16	22 (558)	22 (558)	24 (609)	10 (254)	1-1/4 (31)	7/8 (22)	40-3/8 (1025)	10 (254)	13 (330)	2-3/4 (69)	6-1/2 (165)	25-9/16 (649)	23 (584)	14-1/4 (361)	5 (127)	5/8 (15)	5/16 (7)	15-9/16 (395)	-	1-3/4 (44)	44-9/16 (1131)	25 (635)	

NOTES

- All dimensions are in inches.
 - Dimensions may vary $\pm 3/8"$.
 - Not for construction purposes unless certified.
 - Suction & discharge flanges ANSI Standard flat face.
- *STD. 125# SUCTION FLANGE, 250# DISCHARGE FLANGE FOR 6-491-12A AND 10-491-20

STD. 125# SUCTION AND DISCHARGE FLANGES*	OPT. 125# SUCTION FLANGE, 250# DISCHARGE FLANGE	OPT. 250# SUCTION AND DISCHARGE FLANGES
--	---	---

MODEL 492 SINGLE STAGE FIRE PUMPS



PUMP SIZE		CASE BORE	SUCTION																							
DISCH	MODEL			A	B	D	E	G	H	O	R	S	U	V	W	X	Z	AA	AB	AC	AD	AW	AX	CP	YY	ZZ
3	492	10A	4	12 (305)	11-1/2 (292)	10-1/2 (267)	5-1/8 (130)	2 (50)	5/8 (16)	17 (432)	4-7/8 (124)	5-1/2 (140)	1-1/16 (27)	3-7/8 (98)	16-1/2 (419)	10 (254)	5-1/2 (140)	3-3/8 (86)	1/4 (6)	1/8 (3)	11-5/8 (295)	-	-	29-3/16 (741)	10 (254)	1
4	492	10	6	13 (330)	14 (355)	13 (330)	5-1/2 (139)	1 (25)	7/8 (22)	20-5/16 (515)	6 (152)	6-1/2 (165)	1-1/4 (31)	4 (101)	16-7/8 (428)	10-1/4 (260)	6-1/2 (165)	2-1/4 (57)	1/4 (6)	1/8 (3)	10-7/8 (276)	-	-	29-13/16 (757)	11 (279)	
4	492	14	5	14 (355)	15 (381)	12-1/2 (317)	6 (152)	2 (50)	7/8 (22)	21-3/4 (552)	6-1/2 (165)	7-3/8 (187)	1-1/4 (31)	3-5/8 (92)	18-3/8 (466)	13-1/2 (342)	7-3/8 (187)	2-5/8 (66)	1/4 (6)	1/8 (3)	11-7/8 (301)	-	3/8 (9)	33-3/16 (842)	14 (355)	3/4
4	492	18	5	15 (381)	16 (406)	14-3/4 (374)	6-1/2 (165)	2 (50)	7/8 (22)	25-3/4 (654)	7 (177)	9-1/2 (241)	1-1/4 (31)	3-1/2 (88)	18-3/8 (466)	14 (355)	9-1/2 (241)	2-5/8 (66)	1/4 (6)	1/8 (3)	11-3/8 (288)	-	1/4 (6)	33-1/4 (844)	14 (355)	
5	492	10	8	16-1/2 (419)	16-1/2 (419)	16 (406)	7 (177)	1 (25)	1-1/4 (31)	23-5/8 (600)	7 (177)	8 (203)	1-5/8 (41)	4-5/8 (117)	20 (508)	12-1/2 (317)	7 (177)	4-3/16 (106)	3/8 (9)	3/16 (4)	13 (406)	-	-	35-1/2 (902)	13 (330)	
5	492	18	6	18 (457)	16 (406)	16 (406)	8 (203)	2-1/4 (57)	1 (25)	27-3/4 (704)	7 (177)	10 (254)	1-11/16 (42)	4-15/16 (125)	21 (533)	14 (355)	10 (254)	4-1/8 (104)	3/8 (9)	3/16 (4)	14 (355)	-	1/4 (6)	37-1/8 (942)	14 (355)	
6	492	10	10	16-1/2 (419)	16-1/2 (419)	18 (457)	7 (177)	3/4 (19)	1-1/4 (31)	26-7/16 (671)	7 (177)	9 (228)	1-5/8 (41)	4-5/8 (117)	20-5/8 (523)	13 (330)	7-1/2 (190)	4-3/16 (106)	3/8 (9)	3/16 (4)	13-5/8 (346)	-	-	36-3/4 (933)	15 (381)	
6	492	15	8	17-1/2 (444)	20 (508)	15-1/2 (394)	7-3/4 (197)	2-1/2 (63)	1 (25)	25-3/4 (654)	9 (228)	8-3/4 (222)	1-11/16 (42)	4-3/16 (106)	22-1/2 (571)	15.5 (394)	8-3/4 (222)	4-1/8 (104)	3/8 (9)	3/16 (4)	13-5/8 (346)	-	3/4 (19)	40-1/4 (1022)	15 (381)	1
8	492	15	10	17-1/2 (444)	20 (508)	17-1/2 (444)	7-3/4 (196)	2-1/2 (63)	1 (25)	28-1/8 (714)	9 (228)	9-1/4 (234)	1-11/16 (42)	4-13/16 (122)	22-1/2 (571)	17 (431)	9-1/4 (234)	4-1/8 (104)	3/8 (9)	3/16 (4)	13-1/2 (342)	-	1/2 (12)	40-1/4 (1022)	17 (431)	
10	492	18	12	26 (660)	24 (609)	21-3/4 (552)	10-1/2 (266)	1-1/4 (31)	1-1/4 (31)	35-1/4 (895)	9-1/2 (241)	11-1/2 (292)	2 (50)	5-5/16 (134)	25-9/16 (649)	21 (533)	11-1/2 (292)	5 (127)	1/2 (12)	1/4 (6)	16-1/16 (407)	-	-	45-13/16 (1163)	21 (533)	

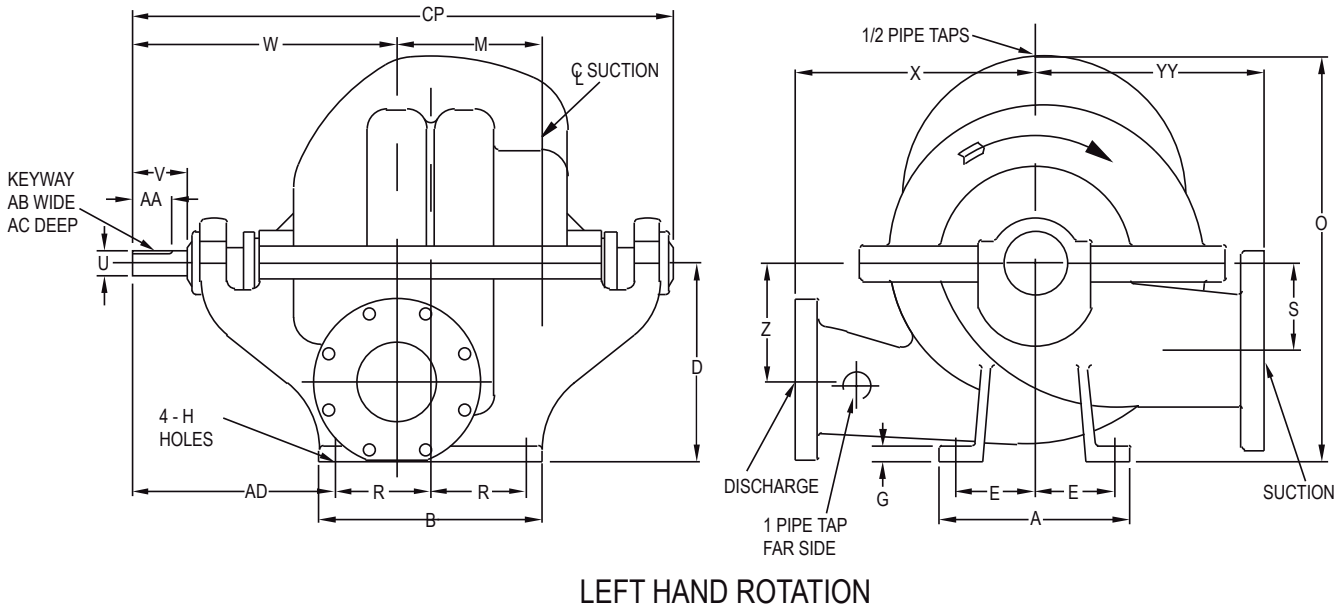
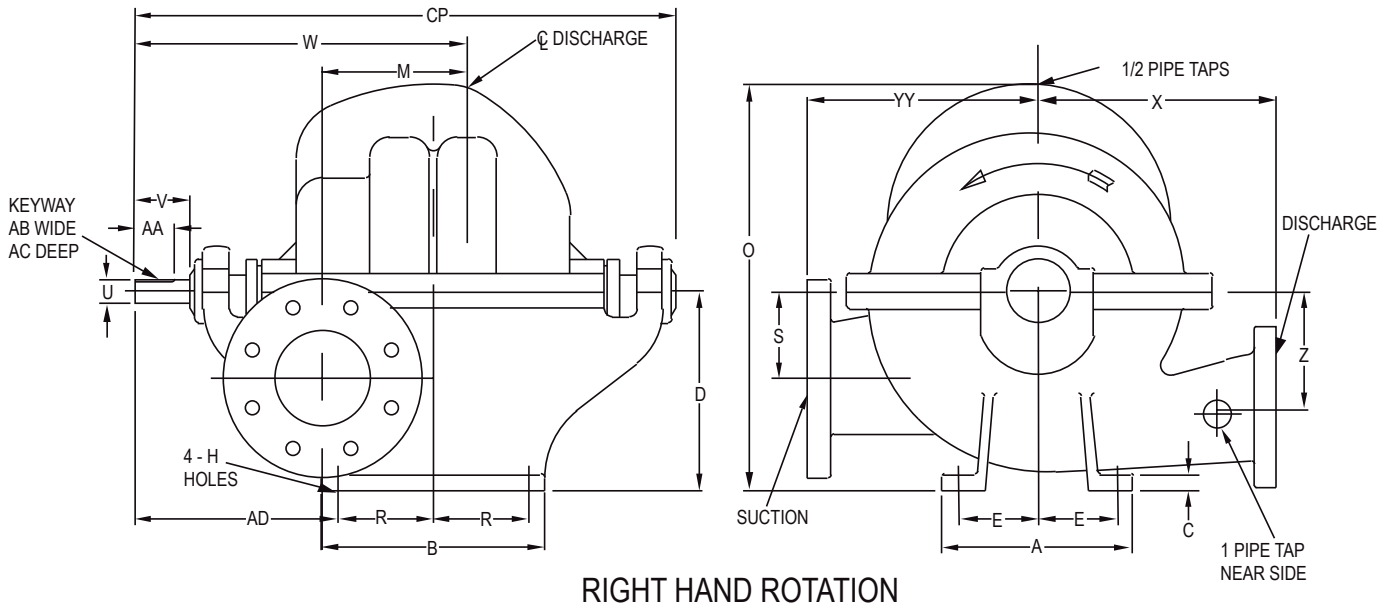
NOTES

- All dimensions are in inches.
- Dimensions may vary $\pm 3/8"$.
- Not for construction purposes unless certified.
- Suction & discharge flanges ANSI Standard flat face.

STD. 125# SUCTION AND DISCHARGE FLANGES	OPT. 125# SUCTION FLANGE, 250# DISCHARGE FLANGE	OPT. 250# SUCTION AND DISCHARGE FLANGES
---	---	---

■ - Indicates obsolete model.

MODEL 495 MULTISTAGE FIRE PUMPS



PUMP SIZE			SUCTION														RIGHT HAND ROTATION	LEFT HAND ROTATION										
DISCH	MODEL	CASE BORE		A	B	D	E	G	H	M	O	R	S	U	V	W	W	X	Z	AA	AB	AC	AD	CP	YY			
5	495	15	6	20 (508)	24 (609)	17 (431)	9 (228)	2 (50)	7/8 (22)	11 (279)	27-3/4 (704)	11 (279)	9 (228)	1-11/16 (42)	5-7/16 (138)	28-3/8 (720)	23-3/8 (593)	15 (381)	9 (228)	4 (101)	3/8 (9)	3/16 (4)	14-7/8 (377)	46-7/8 (1190)	15 (381)			
6	495	17	8	22 (558)	27 (685)	17-1/2 (444)	9-3/4 (247)	2-1/2 (63)	1-1/8 (28)	13 (330)	35-3/8 (898)	12 (304)	9 (228)	2-1/4 (57)	4-5/8 (117)	31-5/8 (803)	25-1/8 (638)	16-1/2 (419)	10-1/2 (266)	4-1/4 (107)	1/2 (12)	1/4 (6)	16-3/8 (415)	52-1/2 (1333)	16-1/2 (419)			

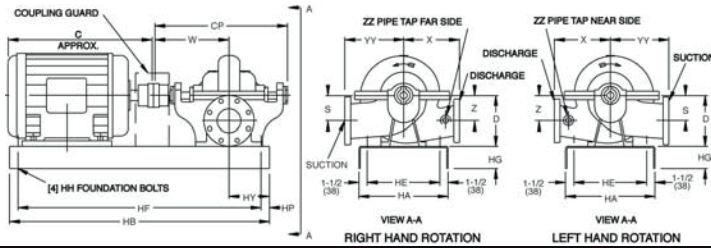
NOTES

- All dimensions are in inches.
- Dimensions may vary $\pm 3/8"$.
- Not for construction purposes unless certified.
- Suction & discharge flanges ANSI Standard flat face.

■ - Indicates obsolete model.

STD. 125# SUCTION FLANGE, 250# DISCHARGE FLANGE	OPT. 250# SUCTION AND DISCHARGE FLANGES
---	---

MODEL 481 ON STANDARD STEEL BASE



STANDARD 125# SUCTION AND DISCHARGE FLANGES			OPTIONAL 125# SUCTION FLANGE, 250# DISCHARGE FLANGE			OPTIONAL 250# SUCTION AND DISCHARGE FLANGES			MOTOR FRAME		C APPROX																														
DISCH	MODEL	CASE BORE	SUCTION POWER SERIES	D	S	W	X	Z	CP	HY	YY	ZZ	18	21	23	22	24	24	25	25	26	26	28	28	29	28	30	30	33	32	35	34	38	36	40	44	45	49			
													(457)	(533)	(584)	(558)	(609)	(609)	(635)	(635)	(660)	(660)	(711)	(736)	(736)	(711)	(761)	(761)	(838)	(812)	(888)	(863)	(964)	(914)	(1015)	(1015)	(1117)	(1117)	(1143)	(1245)	(1245)
2-1/2	481	10B	3	8	4	13-1/2	9-3/4	4	20	5	10		BASE	5	7	9	9	9	9	11	11	11	11	11	11	11	11	12	-	-	-	-	-	-	-	-	-	-			
3	481	10 10A	4	9*	4-1/2	13-1/2	10	4-1/2	24	5	11		BASE	5	7	9	9	9	9	11	11	11	11	11	11	11	11	12	-	-	-	-	-	-	-	-	-	-	-		
4	481	11A 11C	5	10+	5	14-1/2	11-1/4	5	26	6	12-3/4		BASE	7	7	9	11	11	11	11	11	11	11	11	11	11	12	12	12	15	15	15	15	15	15	15	-	-	-	-	
4	481	11D/E	5	10+	5	14-1/2	12	5	26	6	12-3/4		BASE	7	7	9	11	11	11	11	11	11	11	11	11	11	12	12	12	15	15	15	15	15	15	-	-	-	-	-	
4	481	15	5	11	5-1/2	14-1/2	13	5-1/2	26	6	14		BASE	-	7	9	11	11	11	11	11	11	11	11	11	11	12	12	12	15	15	15	15	15	15	-	-	-	-	-	
5	481	11B 11C/11D	6	11**	5-1/2	16	11-1/4	5-1/2	28-1/2	6	13-1/4		BASE	7	9	10	11	11	11	11	12	12	12	12	12	12	12	12	15	15	15	15	15	15	15	15	16	16	16	16	
5	481	15 15A/B	6	12-1/2	6-1/4	16	13-1/4	6-1/4	26-1/2	6	15	1-1/4	BASE	7	9	10	11	11	11	11	12	12	12	12	12	12	12	15	15	15	15	15	15	15	15	16	16	16	16	16	
5	481	17	6	12-1/2	6-1/4	16	14	6-1/4	28-1/2	6	15		BASE	7	9	10	11	11	11	11	12	12	12	12	12	12	12	15	15	15	15	15	15	15	15	16	16	16	16	16	
6	481	11	8	12-1/2	6-1/4	16	11-3/4	6-1/4	28-1/2	6	14-1/2		BASE	7	9	10	11	11	11	11	12	12	12	12	12	12	12	15	15	15	15	15	15	15	15	16	16	16	16	16	16
6	481	11HH	8	16-1/2	8-5/8	18-1/2	10	8-5/8	32-7/8	8	15		BASE																												
6	481	14HH 14HHB	8	16-1/2	7-1/2	20-1/2	15	7-1/2	36-3/4	8	17		BASE																												
6	481	15/15B 15C/15E	8	13-1/2	6-3/4	18	14-1/4	6-3/4	32	7	16-3/4		BASE	-	11	12	12	12	12	12	12	12	12	12	12	12	13	13	13	15	15	15	15	15	16	16	16	16	16	16	
6	481	18B 18C/D	8	14-3/4	8	18	16	8	32	7	18		BASE	10	11	12	12	12	12	12	12	12	12	12	12	12	13	13	13	15	15	15	15	16	16	16	16	16	16	16	
6	481	20	8	14-3/4	8	18	15-3/4	8	32	7	18		BASE	10	11	12	12	12	12	12	12	12	12	12	12	12	13	13	13	15	15	15	15	16	16	16	16	16	16	16	16
8	481	12	10	14-3/4	8	18	17	9	32	7	17-3/4		BASE	10	11	12	12	12	12	12	12	12	12	12	12	12	13	13	13	15	15	15	15	16	16	16	16	16	16	16	16
8	481	17B 17C	10	14-3/4	8	18	17	8	32	7	17-3/4		BASE	10	11	12	12	12	12	12	12	12	12	12	12	12	13	13	13	15	15	15	15	16	16	16	16	16	16	16	16
8	481	21 21A	10	18-1/2	9-1/2	21-7/8	18	9-1/2	38	11	21		BASE																												
8	481	24	12	26	15	25-1/4	20	15	43-7/8	11	25		BASE																												
10	481	15C	12	25	13-1/2	21-7/8	17	13-1/2	38	11	20		BASE																												
10	481	18	12	25	13-1/2	21-7/8	18	13-1/2	38	11	22		BASE																												
10	481	18D	12	25	12-1/4	24-1/4	20	12-1/4	43	11-1/2	24		BASE																												
12	481	18A	14	24	15	25-1/4	18	15	44	11	23		BASE																												

NOTES

- All dimensions are in inches.
- Dimensions may vary $\pm 3/8"$.
- Not for construction purposes unless certified.
- Coupling gap may vary $1/8"$ thru $2-1/16"$.
- Conduit box is shown in approximate location. Dimensions are not specified as they vary with each motor manufacturer.
- Suction and discharge flanges are ANSI standard flat face.

* D is 10-1/2" when using frames 324TS - 365TS.

** D is 12 when using frames 404TS - 445TS.

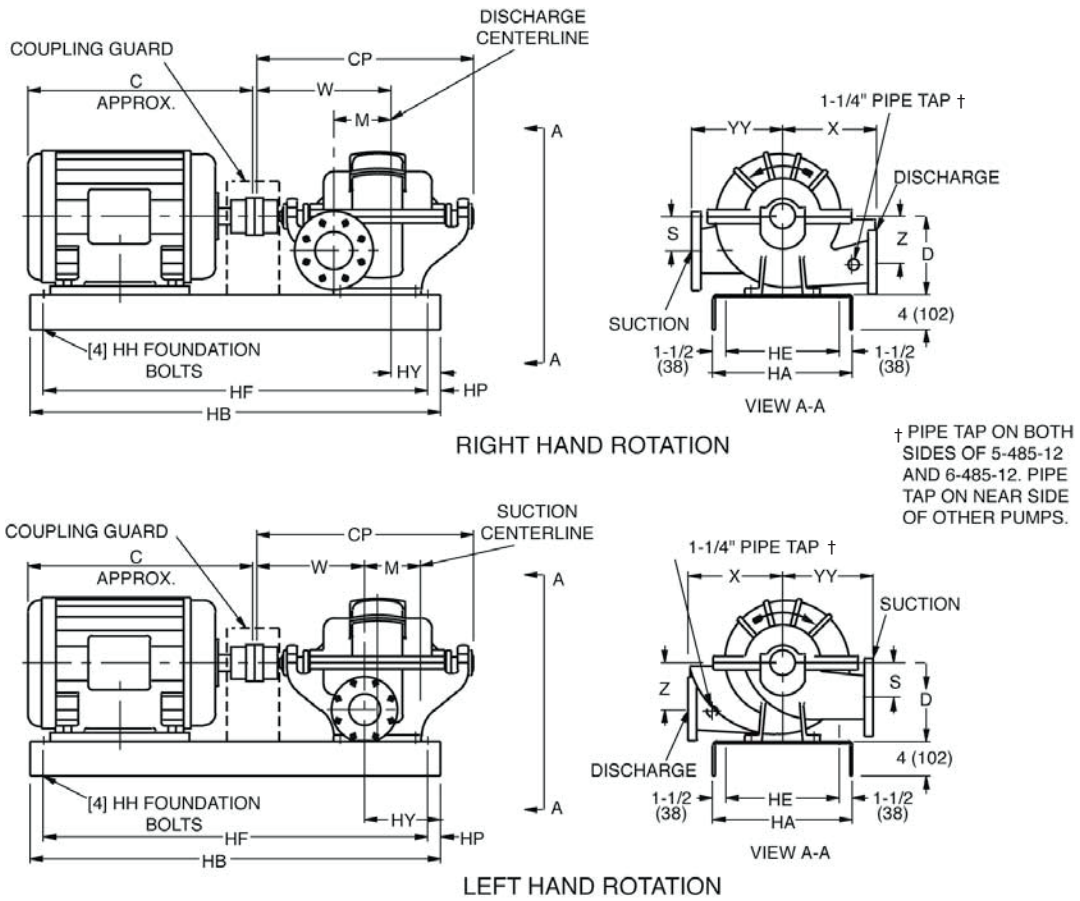
*** Pump sizes 6-481-11HH & 6-481-14HH are furnished as standard with 125# suction flange & 250# discharge flange.

+D is 10-1/2" when using frames 404TS - 405T and D is 11 when using frames 444TS - 445TS.

■ - Indicates obsolete model.

BASE	HA	HB	HE	HG	HH	HF	HP
5	12 (305)	38 (964)	9 (228)	3 (76)	1/2 (13)	17 (431)	20 (508)
7	13 (330)	42 (1066)	10 (254)	4 (101)	5/8 (15)	17 (431)	24 (609)
9	15 (381)	44 (1117)	12 (305)	3-3/8 (86)	5/8 (15)	19 (482)	24 (609)
10	18 (457)	44 (1117)	15 (381)	4 (101)	5/8 (15)	42 (1066)	1 (25)
11	18 (457)	48 (1219)	15 (381)	4 (101)	5/8 (15)	46 (1168)	1 (25)
12	18 (457)	54 (1371)	15 (381)	4 (101)	5/8 (15)	52 (1320)	1 (25)
13	18 (457)	60 (1524)	15 (381)	4 (101)	5/8 (15)	35 (888)	24 (609)
14	18 (457)	65 (1651)	15 (381)	4 (101)	5/8 (15)	40 (1015)	24 (609)
15	22 (558)	60 (1524)	19 (482)	4 (101)	5/8 (15)	58 (1473)	1 (25)
16	22 (558)	72 (1828)	19 (482)	4 (101)	5/8 (15)	70 (1778)	1 (25)
17	22 (558)	84 (2133)	19 (482)	4 (101)	5/8 (15)	82 (2082)	1 (25)

MODEL 485 ON STANDARD STEEL BASE



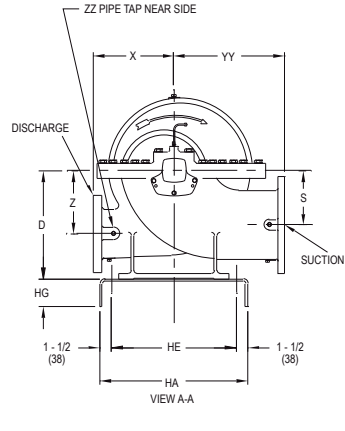
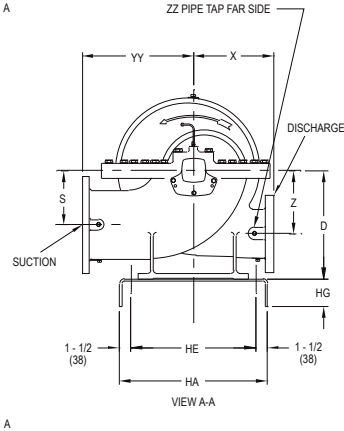
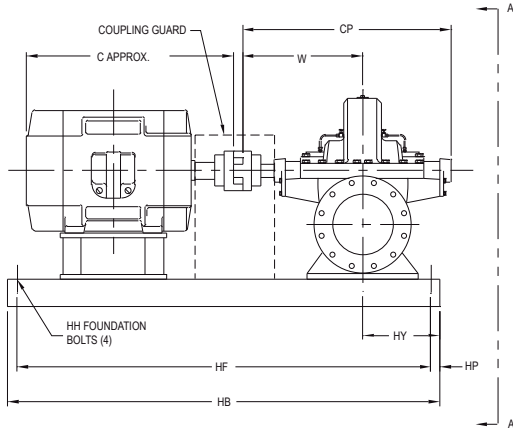
PUMP SIZE		STANDARD* 125# SUCTION AND 250# DISCHARGE FLANGE		OPTIONAL* 250# SUCTION AND DISCHARGE FLANGES												MOTOR FRAME	326TS	326T	364TS	364T	365TS	365T	404TS	404T	405TS	405T	445TS	445T	447TS	447T	449TS	449T	
DISCH	MODEL	CASE BORE	SUCTION	POWER SERIES	D	M	S	RIGHT HAND ROTATION W	LEFT HAND ROTATION W	X	Z	CP	RIGHT HAND ROTATION HY	LEFT HAND ROTATION HY	YY	C	(660)	(711)	(685)	(736)	(711)	(761)	(761)	(838)	(812)	(914)	(863)	(914)	(991)	(1143)			
4	485	15	5	3	11 (279)	7-1/8 (181)	5 (127)	18-7/8 (479)	15-1/8 (384)	13 (330)	6-1/2 (165)	31 (787)	4-1/8 (105)	7-7/8 (200)	13-1/2 (343)	BASE	12	12	12	12	12	12	15	15	15	15	15	15	15	15	15	15	
5	485	12	5	4A	14 (356)	6-5/8 (168)	7 (178)	20-7/8 (530)	18-1/8 (460)	13 (330)	7 (178)	35-3/8 (889)	11-1/8 (283)	13-7/8 (352)	13 (330)	BASE							16	16	16	16	16	16	16	16	17	17	
5	485	15	6	4	12-1/2 (317)	9-1/8 (232)	5-1/2 (140)	21-1/8 (536)	16-7/8 (428)	15 (381)	7-1/2 (190)	34-1/2 (876)	4-7/8 (124)	9-1/8 (232)	15-7/16 (392)	BASE	12	12	12	12	12	13	15	15	15	15	15	15	16				
6	485	12	6	5A	15 (381)	7-1/2 (191)	8 (203)	22-7/8 (581)	19-5/8 (498)	14 (356)	8 (203)	38-1/2 (978)	10-7/8 (276)	14-1/8 (359)	14 (356)	BASE								16	16	16	16	16	16	17	17		
6	485	16/16B	8	5	16.5 (419)	10.5 (267)	8.25 (210)	23.63 (600)	18.38 (467)	19 (483)	7.75 (197)	37.88 (962)	5 (127)	10.25 (260)	17 (432)	BASE						13	13	16	16	16	16	16	16	16	16	17	17
6	485	17A/17B	8	5	14-3/4 (374)	11 (279)	7 (178)	24-1/2 (622)	17-1/2 (444)	16 (406)	9 (228)	38 (964)	3-1/2 (89)	10-1/2 (266)	16-1/2 (419)	BASE	13	13	13	13	13	13	15	15	15	15	16	16	16	16			

BASE	SIZE	HA	HB	HE	HF	HH	HP
12	18x54 (558)	18 (457)	54 (1372)	15 (381)	52 (1321)	5/8 (16)	1 (25)
13	18x60 (660)	18 (457)	60 (1524)	15 (381)	35 (889)	5/8 (16)	24 (609)
15	22x60 (660)	22 (559)	60 (1524)	19 (483)	58 (1473)	3/4 (19)	1 (25)
16	22x72 (660)	22 (559)	72 (1829)	19 (483)	70 (1777)	5/8 (16)	1 (25)
17	22x84 (660)	22 (559)	84 (2134)	19 (483)	80 (2083)	5/8 (16)	1 (25)

- NOTES**
- All dimensions are in inches (mm).
 - Dimensions may vary $\pm 3/8"$ (10).
 - Not for construction purposes unless certified.
 - Coupling gap may vary 1/8" thru 1".
 - Conduit box is shown in approximate location. Dimensions are not specified as they vary with each motor manufacturer.
 - Suction and discharge flanges are ANSI standard flat face.

* 150# AND 300# OR 300# AND 300# SUCTION AND DISCHARGE DUCTILE IRON FOR 5-485-12 AND 6-485-12

MODEL 491 ON STANDARD STEEL BASE



RIGHT HAND ROTATION

LEFT HAND ROTATION

PUMP SIZE		STANDARD* 125# SUCTION AND DISCHARGE FLANGES		OPTIONAL 125# SUCTION FLANGE, 250# DISCHARGE FLANGE		OPTIONAL 250# SUCTION AND DISCHARGE FLANGES		MOTOR FRAME		C APPROX		MOTOR FRAME																																
DISCH	MODEL	CASE BORE	SUCTION	D	S	W	X	Z	CP	HY	YY	ZZ	254T	256T	284TS	284T	286TS	286T	324TS	324T	326TS	326T	364TS	364T	365TS	365T	404TS	404T	405TS	405T	444TS	444T	445TS	445T	447TS	447T	449TS	449T						
													21	22	22	24	24	25	25	26	26	28	28	29	29	30	30	33	32	35	34	38	36	40	40	44	44	45	45					
3	491	9A 9C	5	12 (304)	6-1/8 (155)	14-5/8 (371)	11 (279)	6-1/8 (155)	25-15/16 (658)	10 (254)	12 (304)	3/4	BASE	11	11	11	12	12	12	12	12	12	12	12	12	12	12	-	-	-	-	-	-	-	-	-	-	-	-	-				
4	491	8A	6	11 (279)	5-3/4 (146)	14-5/8 (371)	10 (254)	5-1/2 (140)	25-15/16 (698)	8 (203)	11-1/4 (286)	3/4	BASE	11	11	11	11	11	12	12	12	12	12	12	12	12	-	-	-	-	-	-	-	-	-	-	-	-	-	-	-			
4	491	11A 11C	6	13-3/4 (349)	6-7/8 (174)	16-5/8 (422)	11-1/4 (285)	7-1/8 (180)	29-11/16 (754)	10 (254)	14 (355)	3/4	BASE	12	12	12	12	12	12	12	12	12	13A	13A	13A	13A	13A	15	15	15	16	16	16	16	16	16	16	16	-	-	-	-		
4	491	14C	6	13-3/4 (349)	6-7/8 (174)	17-5/8 (447)	13 (330)	8-3/8 (212)	31-11/16 (804)	12 (304)	15-1/4 (387)	3/4	BASE	-	-	-	-	15	15	15	15	15	15	15	15	15	15	-	-	-	-	-	-	-	-	-	-	-	-	-	-			
5	491	14A	8	16-1/4 (412)	8-1/4 (209)	17-5/8 (447)	13-1/2 (342)	9-3/4 (247)	31-11/16 (804)	12 (304)	17-1/4 (438)	1	BASE	-	-	-	-	15	15	15	15	15	15	15	15	15	15	16	16	16	16	16	16	16	16	16	16	16	16	-	-	-	-	
5	491	18A	8	16-1/4 (412)	8-1/8 (206)	18-7/8 (479)	15 (381)	10-5/8 (269)	33-3/8 (847)	12 (304)	18-3/4 (476)	1	BASE	-	-	-	-	-	-	-	-	-	15	15	15	15	15	16	16	16	16	16	16	16	16	16	16	16	16	16	-	-	-	-
6	491	12A 12B	6	13-3/4 (349)	6-7/8 (174)	16-5/8 (422)	20-1/2 (520)	7-1/8 (180)	29-11/16 (754)	10 (254)	14 (355)	1	BASE	12	12	12	12	12	12	12	12	12	12	12	12	13A	13A	13A	13A	15	15	15	16	16	16	16	16	16	16	16	-	-	-	-
6	491	14A 14C	10	18-3/4 (476)	9-3/8 (238)	20-1/8 (511)	13-1/4 (336)	10 (254)	35-7/8 (911)	12 (304)	18 (457)	1	BASE	-	15	15	15	15	15	15	15	15	15	16	16	16	16	16	16	16	16	16	16	16	16	16	16	16	16	-	-	-	-	
6	491	18C	10	18-3/4 (476)	9-3/8 (238)	20-1/8 (511)	16 (406)	11-3/4 (298)	35-7/8 (911)	13-1/2 (342)	20 (508)	1	BASE	-	-	-	21	21	21	21	21	21	21	21	21	21	21	21	21	21	21	21	21	21	21	21	21	21	21	21	21	21	21	21
6	491	19A	10	18-3/4 (476)	9-3/8 (238)	22-5/8 (574)	18 (457)	12-1/8 (307)	39-1/4 (996)	13-1/2 (342)	22 (558)	1	BASE	-	-	-	-	-	-	-	-	-	-	-	-	-	-	-	-	-	-	-	-	-	-	-	22	22	22	22	23	23		
8	491	14A	12	21-1/2 (546)	10-3/4 (273)	20-1/2 (520)	16 (406)	10-3/4 (273)	36-5/8 (930)	13-1/2 (342)	22 (558)	1	BASE	-	-	-	-	-	-	-	-	-	-	-	-	-	-	22	22	22	22	22	22	22	22	22	22	22	22	-	-	-	-	
8	491	18A	12	21-1/2 (546)	10-3/4 (273)	23-3/4 (603)	16 (406)	12-1/2 (317)	41-1/2 (1054)	13-1/2 (342)	22 (558)	1	BASE	-	-	-	-	-	-	-	-	-	-	-	-	-	-	22	22	22	22	22	22	22	22	22	22	22	22	22	23	23	23	23
10	491	20	16	24 (609)	13 (330)	25-9/16 (649)	23 (584)	14-1/4 (361)	44-9/16 (1131)	15 (381)	25 (635)	1	BASE	-	-	-	-	-	-	-	-	-	-	-	-	-	-	-	-	-	-	-	-	-	-	-	-	23	23	24	24			

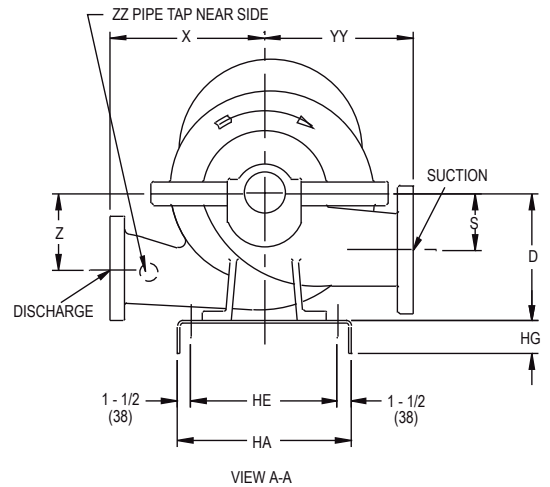
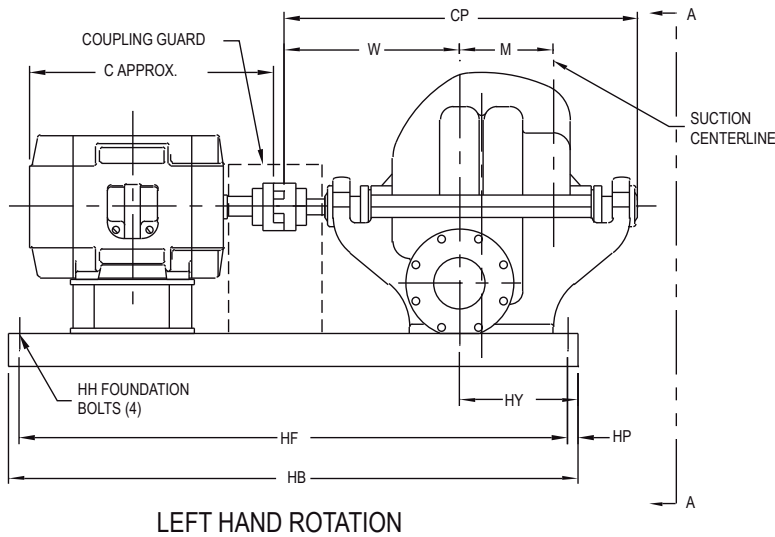
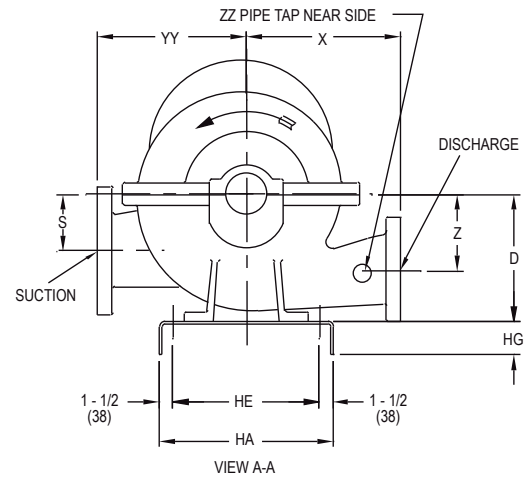
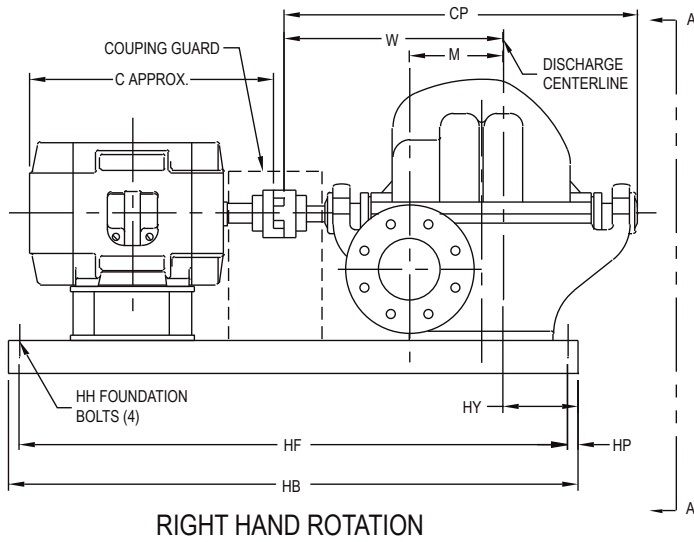
NOTES

- All dimensions are in inches.
- Dimensions may vary $\pm 3/8"$.
- Not for construction purposes unless certified.
- Coupling gap may vary 1/8" thru 3".
- Conduit box is shown in approximate location. Dimensions are not specified as they vary with each motor manufacturer.
- Suction and discharge flanges are ANSI standard flat face.
- Structural steel bases are used for pumps with motor frames larger than 449T (refer to factory).

*STD 125# SUCTION FLANGE AND 250# DISCHARGE FLANGE FOR 6-491-12A AND 10-491-20

BASE	HA	HB	HE	HG	HH	HF	HP
11	18 (457)	48 (1219)	15 (381)	4 (101)	5/8 (15)	46 (1168)	1 (25)
12	18 (457)	54 (1371)	15 (381)	4 (101)	5/8 (15)	52 (1320)	1 (25)
13A	18 (457)	60 (1524)	15 (381)	4 (101)	5/8 (15)	58 (1473)	1 (25)
14A	18 (457)	65 (1651)	15 (381)	4 (101)	5/8 (15)	63 (1600)	1 (25)
15	22 (558)	60 (1524)	19 (482)	4 (101)	5/8 (15)	58 (1473)	1 (25)
16	22 (558)	72 (1828)	19 (482)	4 (101)	5/8 (15)	70 (1778)	1 (25)
21	24 (609)	66 (1676)	21 (533)	4 (101)	5/8 (15)	64 (1625)	1 (25)
22	24 (609)	78 (1981)	21 (533)	4 (101)	5/8 (15)	76 (1930)	1 (25)
23	26 (660)	84 (2133)	23 (584)	4-1/2 (114)	5/8 (15)	82 (2082)	1 (25)
24	26 (660)	96 (2438)	23 (584)	4-1/2 (114)	5/8 (15)	94 (2387)	1 (25)

MODEL 495 ON STANDARD STEEL BASE



		STANDARD 125# SUCTION FLANGE, 250# DISCHARGE FLANGE						OPTIONAL 250# SUCTION AND DISCHARGE FLANGE						MOTOR FRAME															
PUMP SIZE		CASE BORE	SUCTION	D	M	S	RIGHT HAND	LEFT HAND	X	Z	CP	RIGHT HAND	LEFT HAND	YY	ZZ	C APPROX.	404TS	404T	405TS	405T	444TS	444T	445TS	445T	447TS	447T	449TS	449T	
DISCH	MODEL						W	W				HY	HY				HY	HY	404TS	404T	405TS	405T	444TS	444T	445TS	445T	447TS	447T	449TS
5	495	15	6	17 (431)	11 (279)	9 (228)	28-3/8 (720)	23-3/8 (593)	15 (381)	9 (228)	46-7/8 (1190)	13-1/2 (342)	18-1/2 (469)	15 (381)	1 (25)	BASE	17 (762)	17 (838)	17 (812)	17 (889)	-	-	-	-	-	-	-	-	-
6	495	17	8	17-1/2 (444)	13 (330)	9 (228)	31-5/8 (803)	25-1/8 (638)	16-1/2 (419)	10-1/2 (266)	52-1/2 (1333)	12-3/4 (323)	19-1/4 (488)	16-1/2 (419)	1 (25)	BASE	-	-	-	-	23	23	23	23	24	24	24	24	

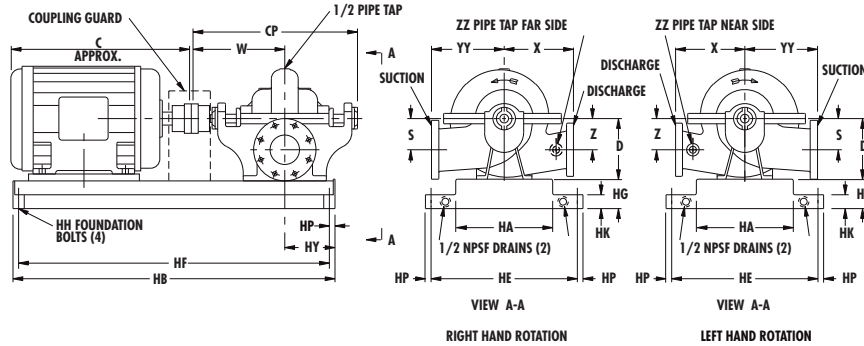
NOTES

- All dimensions are in inches.
- Dimensions may vary $\pm 3/8"$.
- Not for construction purposes unless certified.
- Coupling gap may vary 1/8" thru 3".
- Conduit box is shown in approximate location. Dimensions are not specified as they vary with each motor manufacturer.
- Suction and discharge flanges are ANSI standard flat face.

■ - Indicates obsolete model.

BASE	HA	HB	HE	HG	HH	HF	HP
17	22 (558)	84 (2133)	19 (482)	4 (101)	5/8 (15)	82 (2082)	1 (25)
23	26 (660)	84 (2133)	23 (584)	4-1/2 (114)	5/8 (15)	82 (2082)	1 (25)
24	26 (660)	96 (2438)	23 (584)	4-1/2 (114)	5/8 (15)	94 (2387)	1 (25)

MODEL 481 ON STEEL DRIP RIM BASE



BASE	SIZE	HA	HB	HE	HF	HG	HH	HK	HP
5	11x36	11 (279)	36-1/2 (926)	15-7/8 (403)	35-1/8 (891)	3 (76)	1/2 (13)	1-1/2 (38)	11/16 (17)
6	11x42	11 (279)	42-1/2 (1079)	15-7/8 (403)	41-1/8 (1044)	3 (76)	1/2 (13)	1-1/2 (38)	11/16 (17)
8	14x42	14 (355)	42-1/2 (1079)	19 (482)	41 (1041)	3 (76)	5/8 (16)	1-1/2 (38)	3/4 (19)
9	14x48	14 (355)	48-1/2 (1231)	19 (482)	47 (1193)	3 (76)	5/8 (16)	1-1/2 (38)	3/4 (19)
11	18x46	18 (457)	46-1/2 (1180)	25-1/8 (638)	44-7/8 (1139)	4 (102)	3/4 (19)	2 (51)	13/16 (21)
12	18x54	18 (457)	54-1/2 (1383)	25-1/8 (638)	52-7/8 (1342)	4 (102)	3/4 (19)	2 (51)	13/16 (21)
13	18x64	18 (457)	64-1/2 (1637)	25-1/8 (638)	62-7/8 (1593)	4 (102)	3/4 (19)	2 (51)	13/16 (21)
15	22x54	22 (558)	54-1/2 (1383)	29-1/8 (739)	52-7/8 (1342)	4-1/2 (114)	3/4 (19)	2 (51)	13/16 (21)
16	22x64	22 (558)	64-1/2 (1637)	29-1/8 (739)	62-7/8 (1593)	4-1/2 (114)	3/4 (19)	2 (51)	13/16 (21)
17	22x74	22 (558)	74-1/2 (1891)	29-1/8 (739)	72-7/8 (1850)	4-1/2 (114)	3/4 (19)	2 (51)	13/16 (21)
18	22x82	22 (558)	82-1/2 (2094)	29-1/8 (739)	80-7/8 (2053)	4-1/2 (114)	3/4 (19)	2 (51)	13/16 (21)

DISCH	MODEL	CASE BORE	PUMP SIZE	SUCTION	POWER SERIES	STANDARD 125# SUCTION AND DISCHARGE FLANGES						OPTIONAL 125# SUCTION FLANGE, 250# DISCHARGE FLANGE						OPTIONAL 250# SUCTION AND DISCHARGE FLANGES						C APPROX	MOTOR FRAME																			
						D	S	W	X	Z	CP	HY	YY	ZZ	D	S	W	X	Z	CP	HY	YY	ZZ		215T (305)	254T (330)	256T (355)	284T (406)	284T (457)	286T (533)	286T (584)	324TS (558)	324T (609)	326T (635)	364TS (635)	364T (660)	365TS (660)	365T (711)	404TS (685)	404T (736)	405TS (711)	405T (761)	444TS (761)	444T (838)
2-1/2	481	10B	3	8+	2	8+	4	13-1/2	9-3/4	4	24	5 1/2	10	215T	254T	256T	284T	284T	286T	324TS	324T	326T	364TS	364T	365TS	365T	404TS	404T	405TS	405T	444TS	444T	445TS	445T	447TS	447T	449TS	449T						
3	481	10 10A	4	9*	2	4-1/2	13-1/2	10	4-1/2	24	5-1/2	11	BASE	5	8	8	9	9	9	9	11	12	12	12	12	12	12	-	-	-	-	-	-	-	-	-	-	-	-	-	-			
4	481	11A 11C	5	10	5	5-1/2	14-1/2	12	5	26	6-1/2	12-3/4	BASE	8	8	9	9	9	9	11	11	12	12	12	12	12	15	15	15	15	16	16	-	-	-	-	-	-	-	-	-			
4	481	11D 11E	5	11	3	5-1/2	14-1/2	13	5-1/2	26	6-1/2	12-3/4	BASE	8	8	9	9	9	11	11	12	12	12	12	12	12	15	15	15	15	16	16	-	-	-	-	-	-	-	-	-			
4	481	15	6	11	6	5-1/2	14-1/2	13	5-1/2	26	6-1/2	14	BASE	-	8	9	9	9	11	11	12	12	12	12	12	12	15	15	15	15	16	16	-	-	-	-	-	-	-	-	-			
5	481	11B 11C/11D	6	11**	4	5-1/2	16	11-1/4	5-1/2	28-1/2	6	13-1/4	BASE	6	9	9	11	11	11	11	12	12	12	12	12	12	15	15	15	15	16	16	16	16	16	16	17	17	17	17	17			
5	481	15/15A 15B	6	12-1/2	4	6-1/4	16	13-1/4	6-1/4	28-1/2	6-1/2	15	BASE	6	9	9	11	11	11	12	12	12	12	12	12	12	15	15	15	15	16	16	16	16	16	16	16	17	17	17	17			
5	481	17	6	12-1/2	4	6-1/4	16	14	6-1/4	28-1/2	6-1/2	15	BASE	6	9	9	11	11	11	12	12	12	12	12	12	12	15	15	15	15	16	16	16	16	16	16	16	16	17	17	17	17		
6	481	11	8	12-1/2	4	6-1/2	16	11-3/4	6-1/4	28-1/2	6	14-1/2	BASE	6	9	9	11	11	11	12	12	12	12	12	12	12	15	15	15	15	16	16	16	16	16	16	16	16	16	17	17	17	17	
6	481	11HH	8	16-1/2	4A	8/5/08	18-1/2	10	8-5/8	32-7/8	8	15	BASE	-	8	9	9	9	9	11	11	12	12	12	12	12	15	16	16	16	16	16	16	16	16	16	16	16	16	16	16	16		
6	481	14HH 14HHB	8	16-1/2	5A	7-1/2	20-1/2	15	7-1/2	36-3/4	8	17	BASE	-	-	-	-	-	-	-	-	-	-	-	-	-	16	16	16	16	16	16	16	16	16	16	16	16	16	16	16	16		
6	481	15/15B 15C/15E	8	13-1/2	4	6-3/4	18	14-1/4	6-3/4	32	7-1/2	16-3/4	BASE	-	9	12	12	12	12	12	12	12	12	12	12	13	13	16	16	16	16	16	16	16	16	16	16	16	16	16	16	16		
6	481	18B/18C 18D	8	14-3/4	4	8	18	16	8	32	7-1/2	18	BASE	-	9	12	12	12	12	12	12	12	12	12	12	13	13	16	16	16	16	16	16	16	16	16	16	16	16	16	16	16		
6	481	20	8	14-3/4	4	8	18	15-3/4	8	32	7-1/2	18	BASE	-	9	12	12	12	12	12	12	12	12	12	12	13	13	16	16	16	16	16	16	16	16	16	16	16	16	16	16	16		
8	481	12	10	14-3/4	4	8	18	17	9	32	7-1/2	17-3/4	BASE	-	9	12	12	12	12	12	12	12	12	12	12	13	13	16	16	16	16	16	16	16	16	16	16	16	16	16	16	16		
8	481	17B 17C	10	14-3/4	4	8	18	17	8	32	7-1/2	17-3/4	BASE	-	9	12	12	12	12	12	12	12	12	12	12	13	13	16	16	16	16	16	16	16	16	16	16	16	16	16	16	16		
8	481	21	10	18-1/2	6B	9-1/2	21-7/8	18	9-1/2	38	11-1/2	21	BASE	-	9	12	12	12	12	12	12	12	12	12	12	13	13	16	16	16	16	16	16	16	16	16	16	16	16	16	16	16		
8	481	24	12	26	7	15	25-1/4	20	15	43-7/8	11	25	BASE	-	9	12	12	12	12	12	12	12	12	12	12	13	13	16	16	16	16	16	16	16	16	16	16	16	16	16	16	16		
10	481	15C	12	25	6B	13-1/2	21-7/8	17	13-1/2	38	11-1/2	20	BASE	-	9	12	12	12	12	12	12	12	12	12	12	13	13	16	16	16	16	16	16	16	16	16	16	16	16	16	16	16		
10	481	18	12	25	6B	13-1/2	21-7/8	18	13-1/2	38	11-1/2	22	BASE	-	9	12	12	12	12	12	12	12	12	12	12	13	13	16	16	16	16	16	16	16	16	16	16	16	16	16	16	16		
10	481	18D	12	25	7A	12-1/4	24-1/4	20	12-1/4	43	11-1/2	24	BASE	-	9	12	12	12	12	12	12	12	12	12	12	13	13	16	16	16	16	16	16	16	16	16	16	16	16	16	16			
12	481	18A	14	24	7	15	25-1/4	18	15	44	11-1/2	23	BASE	-	9	12	12	12	12	12	12	12	12	12	12	13	13	16	16	16	16	16	16	16	16	16	16	16	16	16	16			

NOTES
 1. All dimensions are in inches (mm).
 2. Dimensions may vary ± 3/8" (10).
 3. Not for construction purposes unless certified.
 4. Coupling gap may vary 1/8" (3) thru 1" (25).

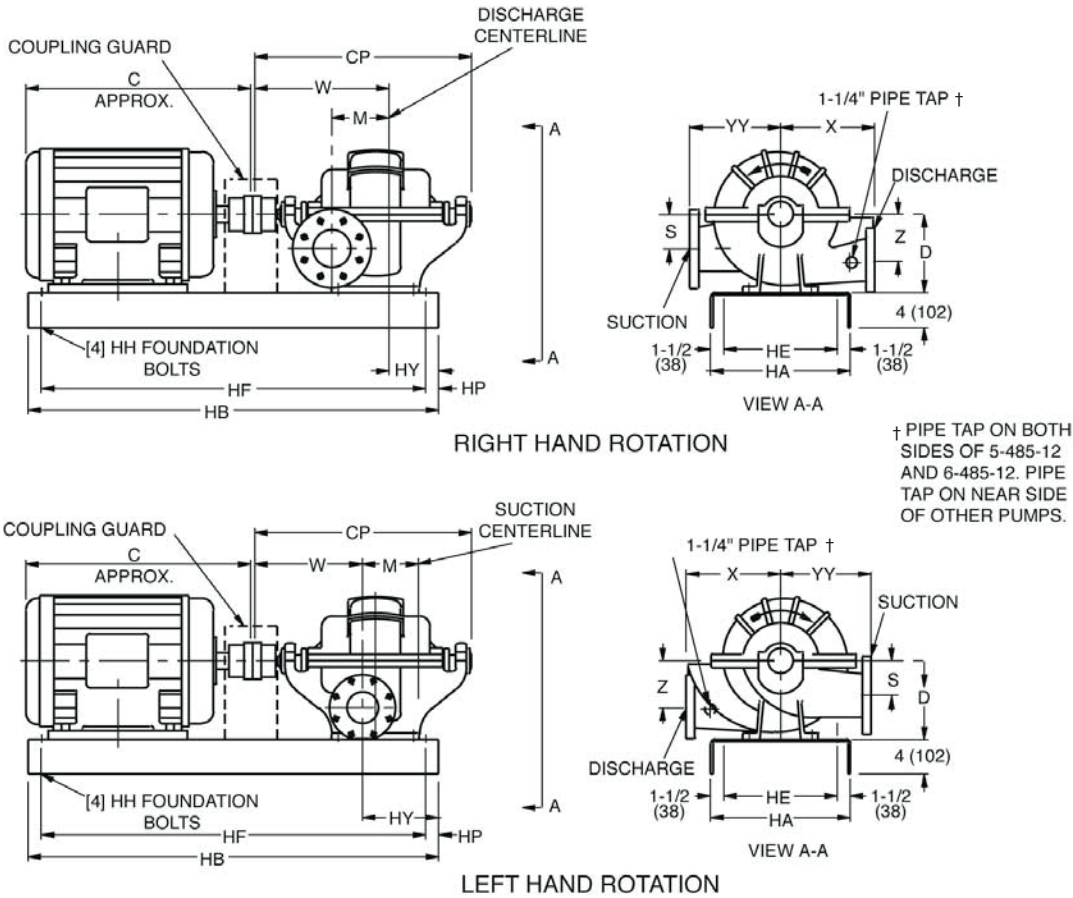
5. Conduit box is shown in approximate location. Dimensions are not specified as they vary with each motor manufacturer.
 6. Suction and discharge flanges are ANSI standard flat face.
 7. Three grout holes are provided in top of base.

+ D is 9" (228) when using frames 364TS-365TS.
 * D is 10-1/2" (266) when using frames 324TS-365TS.

** D is 12" (305) when using frames 404TS-445TS.
 *** Pump sizes 6-481-11HH & 6-481-14HH are furnished as standard with 125# suction flange and 250# discharge flange.

■ - Indicates obsolete model.

MODEL 485 ON STEEL DRIP RIM BASE



PUMP SIZE		STANDARD* 125# SUCTION AND 250# DISCHARGE FLANGE		OPTIONAL* 250# SUCTION AND DISCHARGE FLANGES												MOTOR FRAME														
DISCH	MODEL	CASE BORE	SUCTION	POWER SERIES	D	M	S	RIGHT HAND ROTATION W	LEFT HAND ROTATION W	X	Z	CP	RIGHT HAND ROTATION HY	LEFT HAND ROTATION HY	YY	C	326TS	376T	364TS	364T	365TS	365T	404T	405TS	405T	444TS	444T	447TS	449TS	
4	485	15	5	3	11 (279)	7-1/8 (181)	5 (127)	18-7/8 (479)	15-1/8 (384)	13 (330)	6-1/2 (165)	31 (787)	4-1/8 (105)	7-7/8 (200)	13-1/2 (343)	BASE	12	12	12	12	12	12	15	15	15	15	15	15		
5	485	12	5	4A	14 (356)	6-5/8 (168)	7 (178)	20-7/8 (530)	18-1/8 (460)	13 (330)	7 (178)	35-3/8 (889)	11-1/8 (283)	13-7/8 (352)	13 (330)	BASE							16	16	16	16	16	17	17	
5	485	15	6	4	12-1/2 (317)	9-1/8 (232)	5-1/2 (140)	21-1/8 (536)	16-7/8 (428)	15 (381)	7-1/2 (190)	34-1/2 (876)	4-7/8 (124)	9-1/8 (232)	15-7/16 (392)	BASE	12	12	12	12	12	13	15	15	15	15	15	16		
6	485	12	6	5A	15 (381)	7-1/2 (191)	8 (203)	22-7/8 (581)	19-5/8 (498)	14 (356)	8 (203)	38-1/2 (978)	10-7/8 (276)	14-1/8 (359)	14 (356)	BASE								16	16	16	16	17	17	
6	485	16/ 16B	8	5	16.5 (419)	10.5 (267)	8.25 (210)	23.63 (600)	18.38 (467)	19 (483)	7.75 (197)	37.88 (962)	5 (127)	10.25 (260)	17 (432)	BASE					13	13	16	16	16	16	16	16	17	
6	485	17A 17B	8	5	14-3/4 (374)	11 (279)	7 (178)	24-1/2 (622)	17-1/2 (444)	16 (406)	9 (228)	38 (964)	3-1/2 (89)	10-1/2 (266)	16-1/2 (419)	BASE	13	13	13	13	13	13	15	15	15	16	16	16		

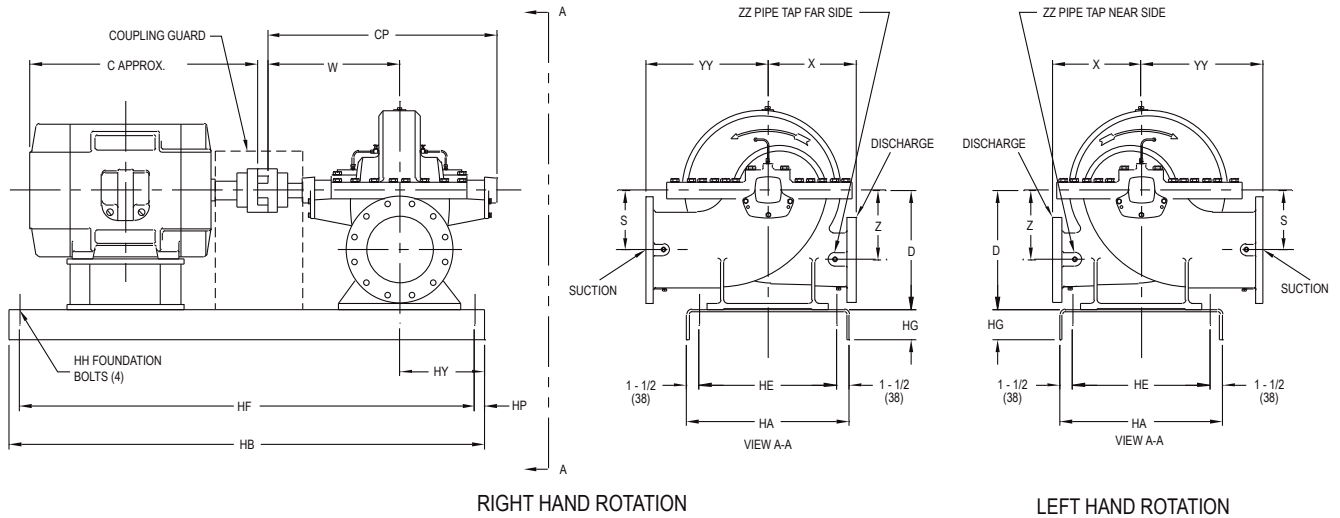
BASE	SIZE	HA	HB	HE	HF	HH	HP
12	18x54 (558)	18 (457)	54 (1372)	15 (381)	52 (1321)	5/8 (16)	1 (25)
13	18x60 (660)	18 (457)	60 (1524)	15 (381)	35 (889)	5/8 (16)	24 (609)
15	22x60 (660)	22 (559)	60 (1524)	19 (483)	58 (1473)	3/4 (19)	1 (25)
16	22x72 (660)	22 (559)	72 (1829)	19 (483)	70 (1777)	5/8 (16)	1 (25)
17	22x84 (660)	22 (559)	84 (2134)	19 (483)	80 (2083)	5/8 (16)	1 (25)

NOTES

- All dimensions are in inches (mm).
- Dimensions may vary $\pm 3/8"$ (10).
- Not for construction purposes unless certified.
- Coupling gap may vary 1/8" thru 1".
- Conduit box is shown in approximate location. Dimensions are not specified as they vary with each motor manufacturer.
- Suction and discharge flanges are ANSI standard flat face.

* 150# AND 300# OR 300# AND 300# SUCTION AND DISCHARGE DUCTILE IRON FOR 5-485-12 AND 6-485-12

MODEL 492 ON STEEL DRIP RIM BASE



PUMP SIZE		STANDARD 125# SUCTION AND DISCHARGE FLANGES										OPTIONAL 125# SUCTION FLANGE, 250# DISCHARGE FLANGE										OPTIONAL 250# SUCTION AND DISCHARGE FLANGES										MOTOR FRAME										
DISCH	MODEL	CASE BORE	SUCTION	D	S	W	X	Z	CP	HY	YY	ZZ	C APPROX	254T	256T	284TS	284TS	286TS	286T	324TS	324TS	326TS	326T	364TS	364T	364T	365TS	365T	404TS	404T	405TS	405T	444TS	444T	445TS	445T	447TS	447T	449TS	449T		
														(533)	(584)	(584)	(609)	(609)	(609)	(635)	(635)	(660)	(660)	(711)	(736)	(736)	(736)	(711)	(762)	(762)	(838)	(812)	(889)	(863)	(965)	(914)	(1016)	(1016)	(1117)	(1143)	(1244)	(1244)
3	492	10A	4	10-1/2 (267)	5-1/2 (140)	16-1/2 (419)	10 (254)	5-1/2 (140)	29-3/16 (757)	7 (178)	10 (254)	1	BASE	11	11	11	11	11	11	12	12	12	12	12	12	12	12	12	-	-	-	-	-	-	-	-	-	-	-	-	-	
4	492	10	6	13 (330)	6-1/2 (165)	16-7/8 (428)	10-1/4 (260)	6-1/2 (165)	29-13/16 (757)	10 (254)	11 (279)	3/4	BASE	-	-	-	-	-	-	13A	13A	13A	13A	13A	13A	13A	13A	15	15	15	16	-	-	-	-	-	-	-	-	-	-	
4	492	14	5	12-1/2 (317)	7-3/8 (187)	18-3/8 (466)	13-1/2 (342)	7-3/8 (187)	33-3/16 (842)	10 (254)	14 (355)	3/4	BASE	-	12	12	12	13A	13A	13A	13A	13A	13A	13A	-	-	-	-	-	-	-	-	-	-	-	-	-	-	-	-	-	-
4	492	18	5	14-3/4 (374)	9-1/2 (241)	18-3/8 (466)	14 (355)	9-1/2 (241)	33-1/4 (844)	11 (279)	14 (355)	3/4	BASE	-	-	-	-	-	-	-	13A	13A	13A	13A	13A	14A	14A	16	16	-	-	-	-	-	-	-	-	-	-	-	-	
5	492	10	8	16 (406)	8 (203)	20 (508)	12-1/2 (317)	7 (178)	35-1/2 (902)	11 (279)	13 (330)	1	BASE	12	12	15	15	15	15	15	15	15	15	15	15	15	15	15	15	16	16	16	16	16	16	16	16	16	16	-	-	
5	492	18	6	16 (406)	10 (254)	21 (533)	14 (355)	10 (254)	37-1/8 (942)	11 (279)	14 (355)	1	BASE	-	-	-	-	-	-	-	15	15	15	15	16	16	16	16	16	16	16	16	16	16	16	16	16	16	16	-	-	
6	492	10	10	18 (457)	9 (228)	20-5/8 (523)	13 (330)	7-1/2 (190)	36-3/4 (933)	11 (279)	15 (381)	1	BASE	-	-	-	-	-	-	-	-	-	-	-	-	-	-	-	16	16	16	16	16	16	16	16	16	16	16	16	-	-
6	492	15	8	15-1/2 (394)	8-3/4 (222)	22-1/2 (571)	15 (381)	8-3/4 (222)	40-1/4 (1022)	13 (330)	15-1/2 (394)	1	BASE	-	-	-	15	15	16	16	16	16	16	16	16	16	16	16	16	16	16	16	16	16	16	16	16	16	16	16	16	-
8	492	15	10	17-1/2 (444)	9-1/4 (234)	22-1/2 (571)	17 (431)	9-1/4 (234)	40-1/4 (1022)	13 (330)	17 (431)	1	BASE	-	-	-	-	-	-	-	16	16	16	16	16	16	16	16	16	16	16	16	16	16	16	16	16	16	16	16	16	-
10	492	18	12	21-3/4 (552)	11-1/2 (292)	25-9/16 (649)	21 (533)	11-1/2 (292)	45-13/16 (1163)	15 (381)	21 (533)	1	BASE	-	-	-	-	-	-	-	-	-	-	-	-	-	-	-	-	-	-	-	-	-	-	-	23	23	24	24		

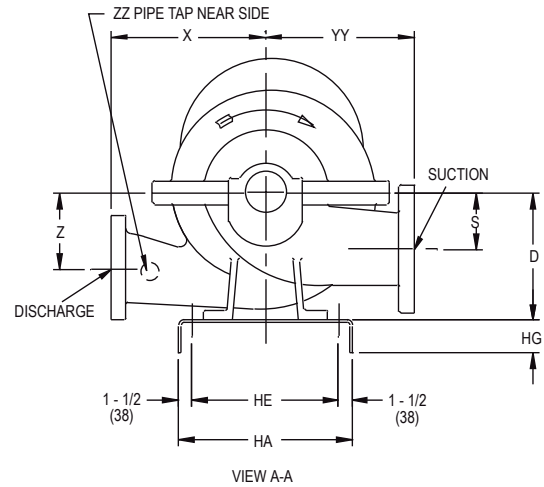
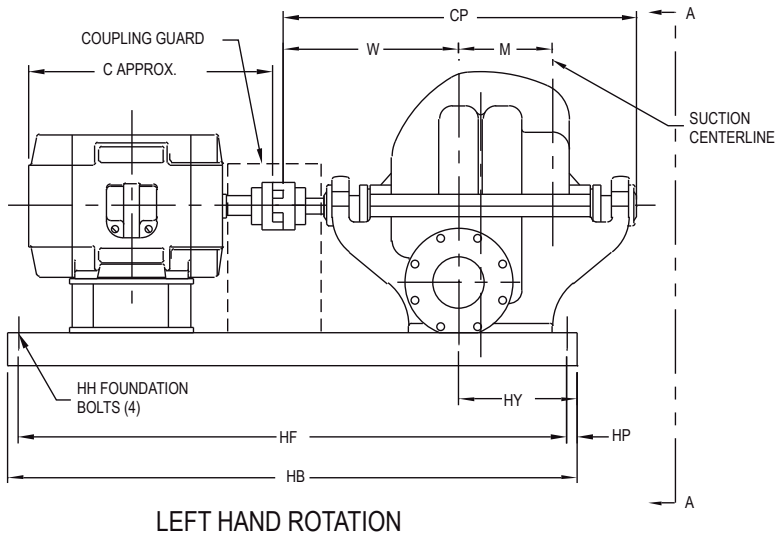
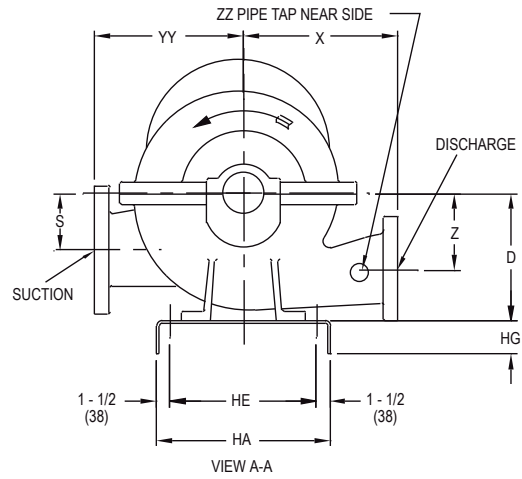
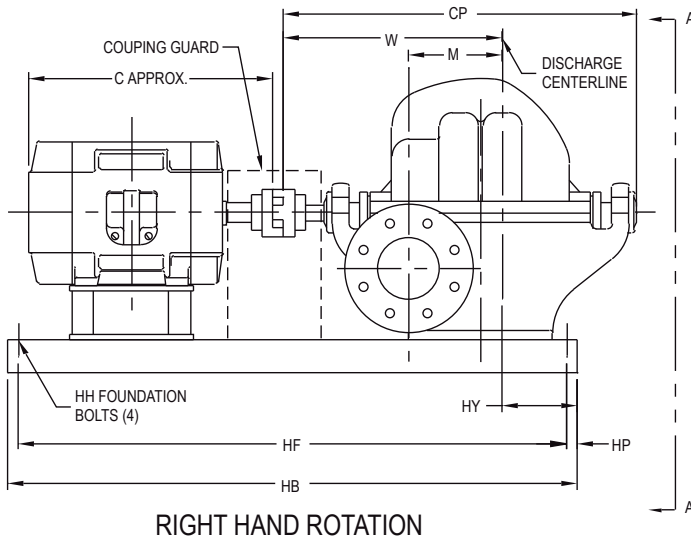
BASE	HA	HB	HE	HG	HH	HF	HP
11	18 (457)	48 (1219)	15 (381)	4 (101)	5/8 (15)	46 (1168)	1 (25)
12	18 (457)	54 (1371)	15 (381)	4 (101)	5/8 (15)	52 (1320)	1 (25)
13A	18 (457)	60 (1524)	15 (381)	4 (101)	5/8 (15)	58 (1473)	1 (25)
14A	18 (457)	65 (1651)	15 (381)	4 (101)	5/8 (15)	63 (1600)	1 (25)
15	22 (558)	60 (1524)	19 (482)	4 (101)	5/8 (15)	58 (1473)	1 (25)
16	22 (558)	72 (1828)	19 (482)	4 (101)	5/8 (15)	70 (1778)	1 (25)
17	22 (558)	84 (2133)	19 (482)	4 (101)	5/8 (15)	82 (2082)	1 (25)
23	26 (660)	84 (2133)	23 (584)	4-1/2 (114)	5/8 (15)	82 (2082)	1 (25)
24	26 (660)	96 (2438)	23 (584)	4-1/2 (114)	5/8 (15)	94 (2387)	1 (25)

NOTES

1. All dimensions are in inches.
2. Dimensions may vary $\pm 3/8$ ".
3. Not for construction purposes unless certified.
4. Coupling gap may vary 1/8" thru 3".
5. Conduit box is shown in approximate location. Dimensions are not specified as they vary with each motor manufacturer.
6. Suction and discharge flanges are ANSI standard flat face.
7. Structural steel bases are used for pumps with motor frames larger than 449T (refer to factory).

■ - Indicates obsolete model.

MODEL 495 ON STEEL DRIP RIM BASE



PUMP SIZE		STANDARD 125# SUCTION FLANGE, 250# DISCHARGE FLANGE														OPTIONAL 250# SUCTION AND DISCHARGE FLANGE														MOTOR FRAME
DISCH	MODEL	CASE BORE	SUCTION	D	M	S	RIGHT HAND W	LEFT HAND W	X	Z	CP	RIGHT HAND HY	LEFT HAND HY	YY	ZZ	C APPROX	404TS	404T	405TS	405T	444TS	444T	445TS	445T	447TS	447T	449TS	449T		
5	495	15	6	17 (431)	11 (279)	9 (228)	28-3/8 (720)	23-3/8 (593)	15 (381)	9 (228)	46-7/8 (1190)	13-1/2 (342)	18-1/2 (469)	15 (381)	1 (25)	BASE	30 (762)	33 (838)	32 (812)	35 (889)	34 (863)	38 (965)	36 (914)	40 (1016)	40 (1016)	44 (1117)	45 (1143)	49 (1244)		
6	495	17	8	17-1/2 (444)	13 (330)	9 (228)	31-5/8 (803)	25-1/8 (638)	16-1/2 (419)	10-1/2 (266)	52-1/2 (1333)	12-3/4 (323)	19-1/4 (488)	16-1/2 (419)	1 (25)	BASE	-	-	-	-	23	23	23	23	24	24	24	24		

NOTES

- All dimensions are in inches.
- Dimensions may vary $\pm 3/8"$.
- Not for construction purposes unless certified.
- Coupling gap may vary 1/8" thru 3".
- Conduit box is shown in approximate location. Dimensions are not specified as they vary with each motor manufacturer.
- Suction and discharge flanges are ANSI standard flat face.

■ - Indicates obsolete model.

BASE	HA	HB	HE	HG	HH	HF	HP
17	22 (558)	84 (2133)	19 (482)	4 (101)	5/8 (15)	82 (2082)	1 (25)
23	26 (660)	84 (2133)	23 (584)	4-1/2 (114)	5/8 (15)	82 (2082)	1 (25)
24	26 (660)	96 (2438)	23 (584)	4-1/2 (114)	5/8 (15)	94 (2387)	1 (25)

NOTES



800 Airport Road | North Aurora, Illinois 60542 | Ph: 630.859.7000 | pentair.com

All indicated Pentair trademarks and logos are property of Pentair. Third party registered and unregistered trademarks and logos are the property of their respective owners. Because we are continuously improving our products and services, Pentair reserves the right to change specifications without prior notice. Pentair is an equal opportunity employer.

©2023 Pentair. All Rights Reserved.

AF-01-10-912-201-274 DT (04-06-23)