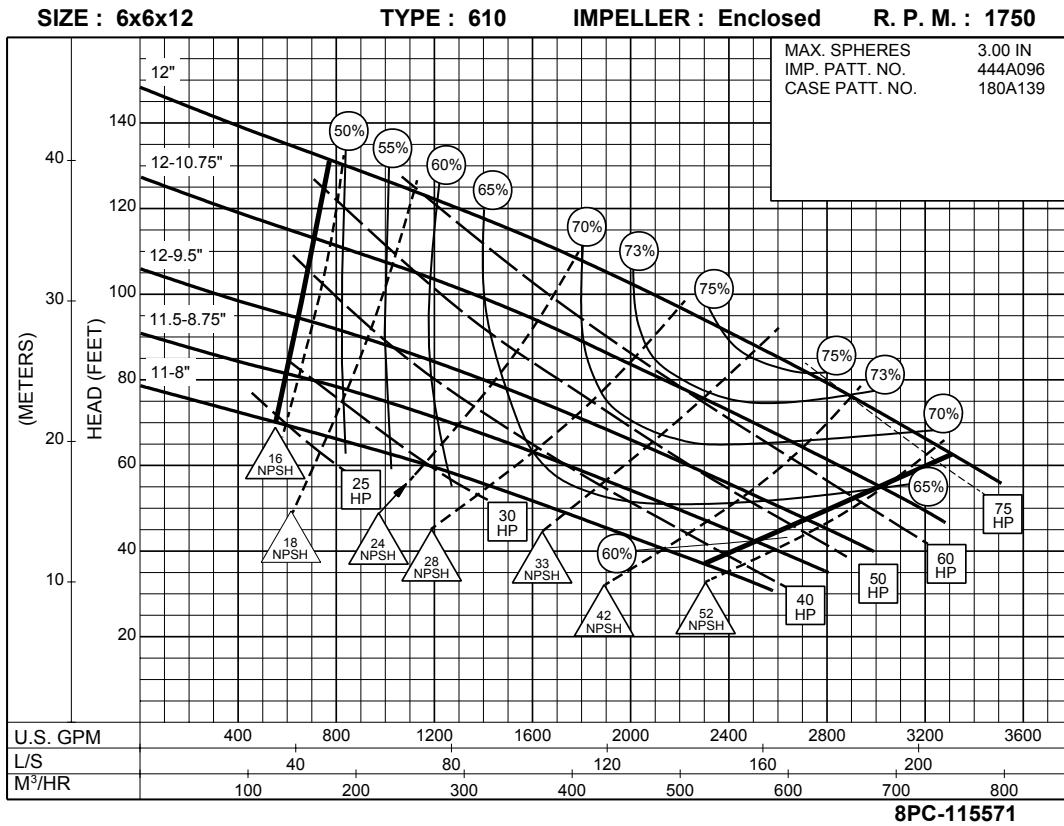


## Performance Curves for the 610 Series

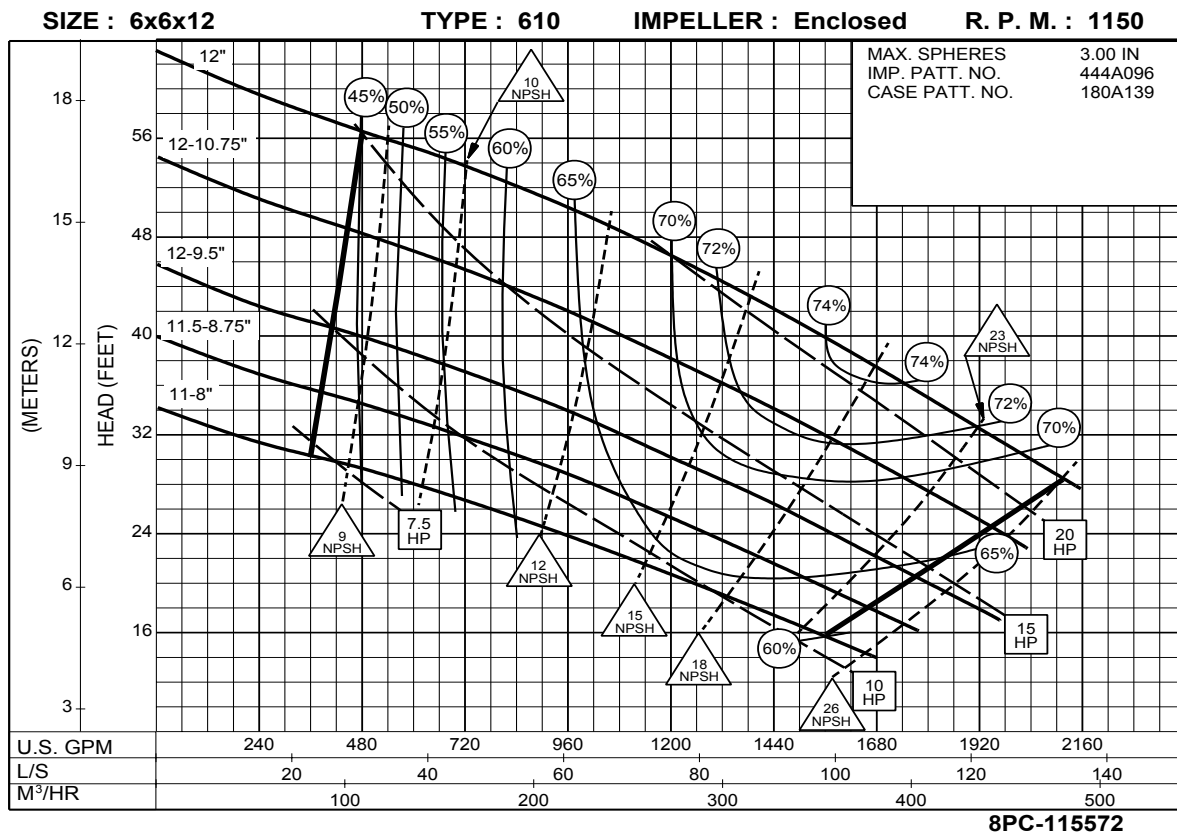
MODEL/SIZE	R.P.M.	CATALOG PAGE	PDF PAGE
6 x 6 x 12	1750/1150	401	2
6 x 6 x 12B	1750/1150	402	3
6 x 6 x 12B	875/700	403	4
6 x 6 x 12	875/700	404	5
6 x 8 x 15	1750/1150	405	6
6 x 8 x 15	875/700	406	7
6 x 8 x 15	580	407	8
6 x 8 x 18	1150/875	408	9
6 x 8 x 18	700/580	409	10
8 x 8 x 15A	1150/875	410	11
8 x 8 x 15A	700/580	411	12
8 x 10 x 18	1150/875	412	13
8 x 10 x 18	700/580	413	14
8 x 10 x 22	875/700	414	15
8 x 10 x 22	580	415	16
10 x 10 x 15	1150/875	416	17
10 x 10 x 15	700/580	417	18
10 x 10 x 22	1175	418	19
10 x 12 x 22	875/700	419	20
10 x 12 x 22	580	420	21
12 x 12 x 22	1175	421	22
12 x 14 x 22A	875/700	422	23
12 x 14 x 22A	580	423	24
12 x 14 x 22B	875/700	424	25
12 x 14 x 22B	580	425	26
14 x 14 x 22A	1175	426	27
16 x 16 x 20	875/700	427	28
16 x 16 x 20	585/500	428	29
16 x 16 x 28	875/700	429	30
16 x 16 x 28	585	430	31
18 x 18 x 28	700/585	431	32
18 x 18 x 28	500	432	33
20 x 20 x 28	700/585	433	34
20 x 20 x 28	500	434	35

# 6 x 6 x 12 SERIES 610

## ENCLOSED IMPELLER



**1750  
RPM**

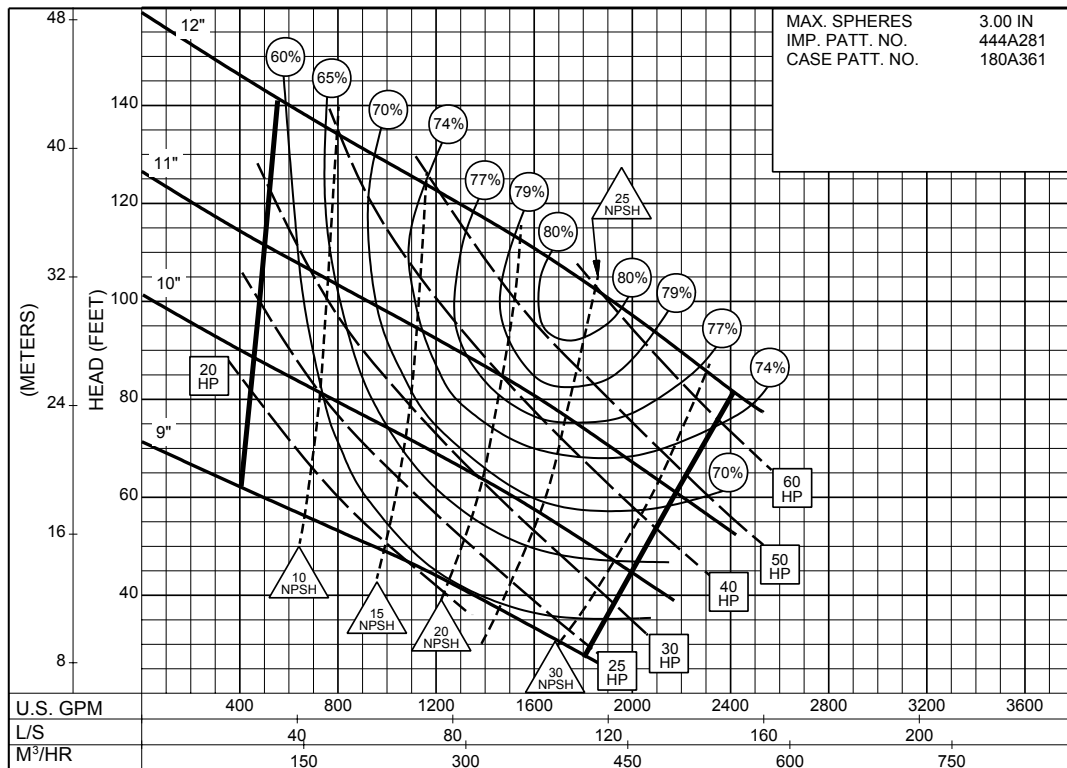


**1150  
RPM**

**6 x 6 x 12B**  
**SERIES 610**

ENCLOSED IMPELLER

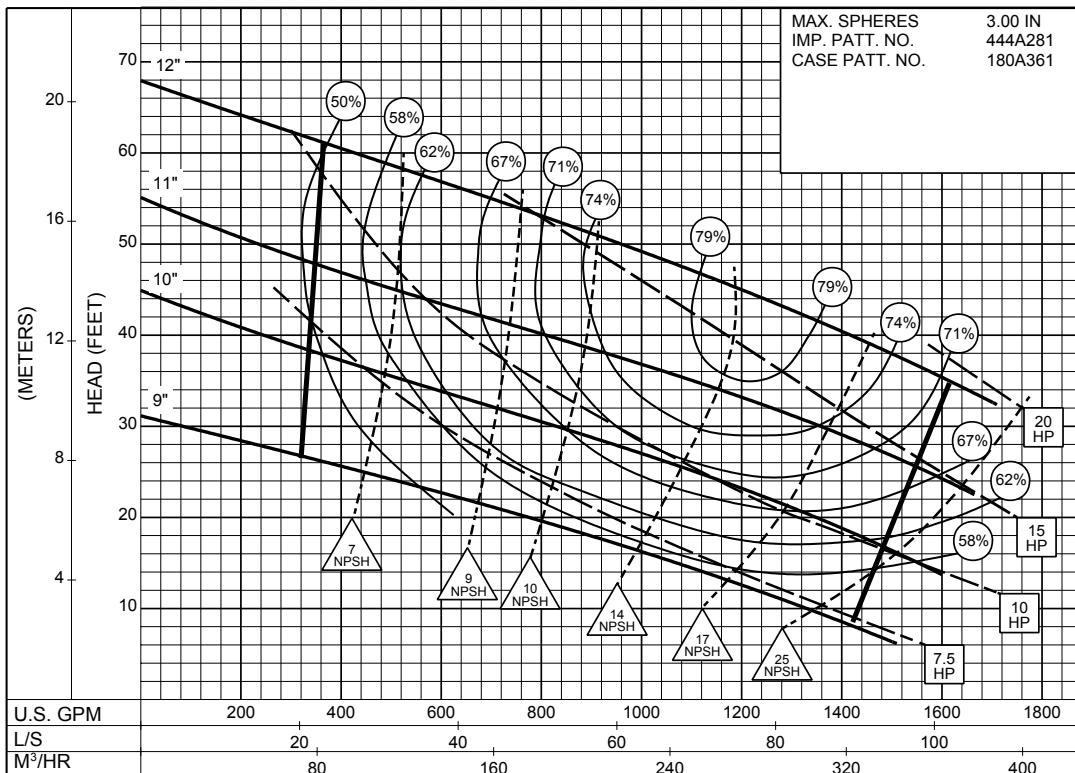
SIZE : 6x6x12B TYPE : 610 IMPELLER : Enclosed R. P. M. : 1750



8PC-144962

**1750**  
RPM

SIZE : 6x6x12B TYPE : 610 IMPELLER : Enclosed R. P. M. : 1150

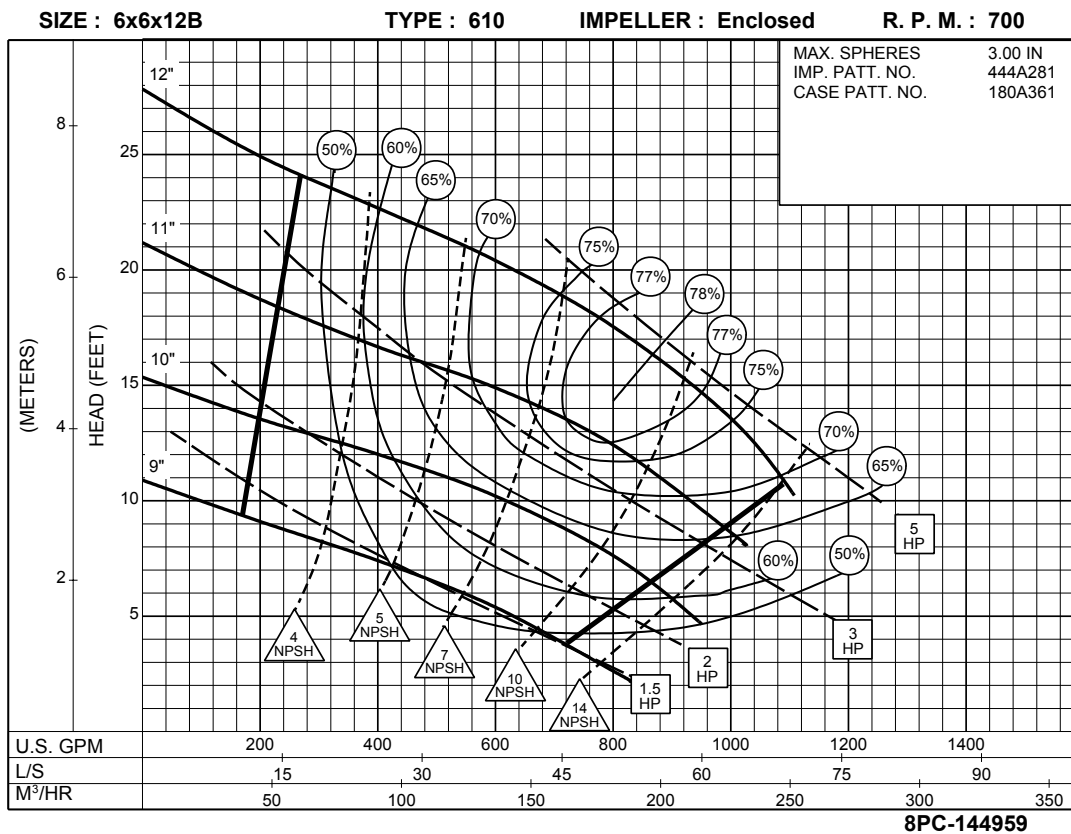
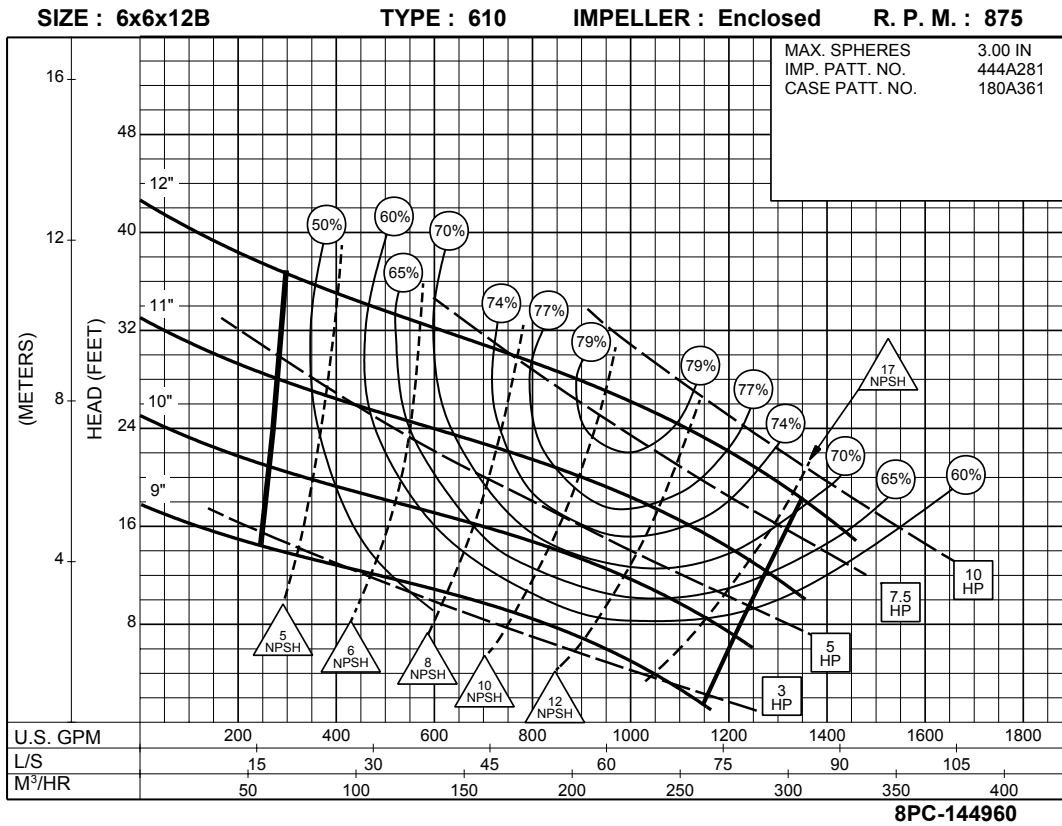


8PC-151595

**1150**  
RPM

# 6 x 6 x 12B SERIES 610

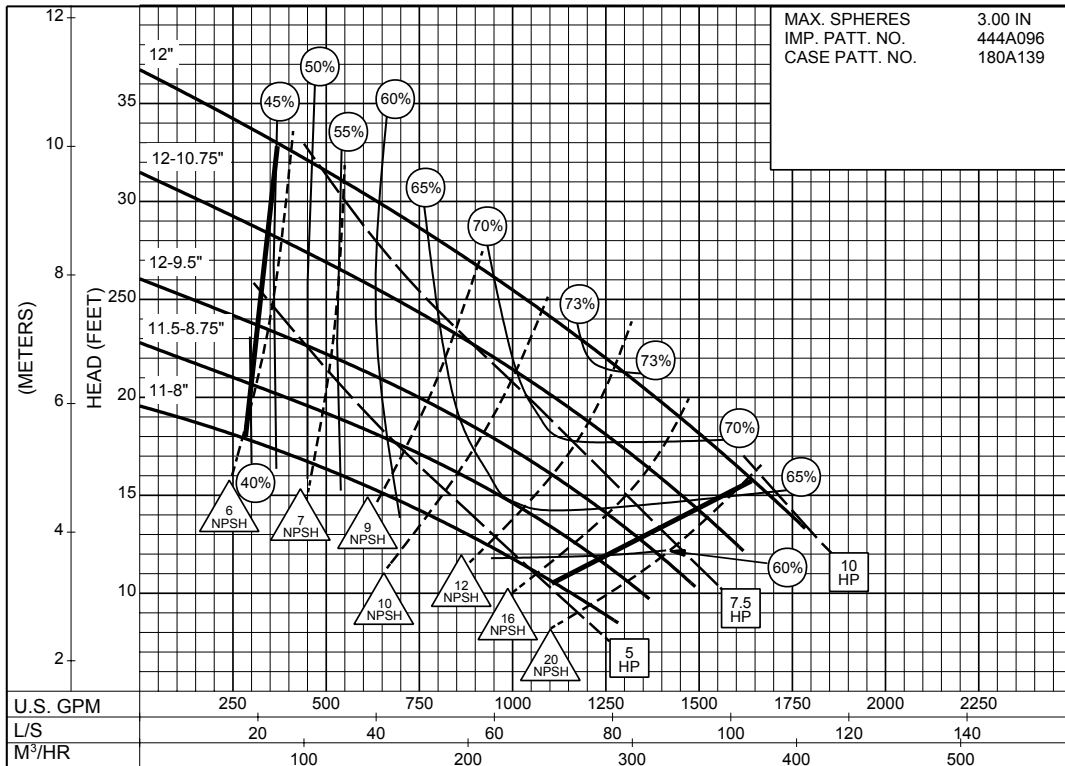
## ENCLOSED IMPELLER



**6 x 6 x 12**  
**SERIES 610**

ENCLOSED IMPELLER

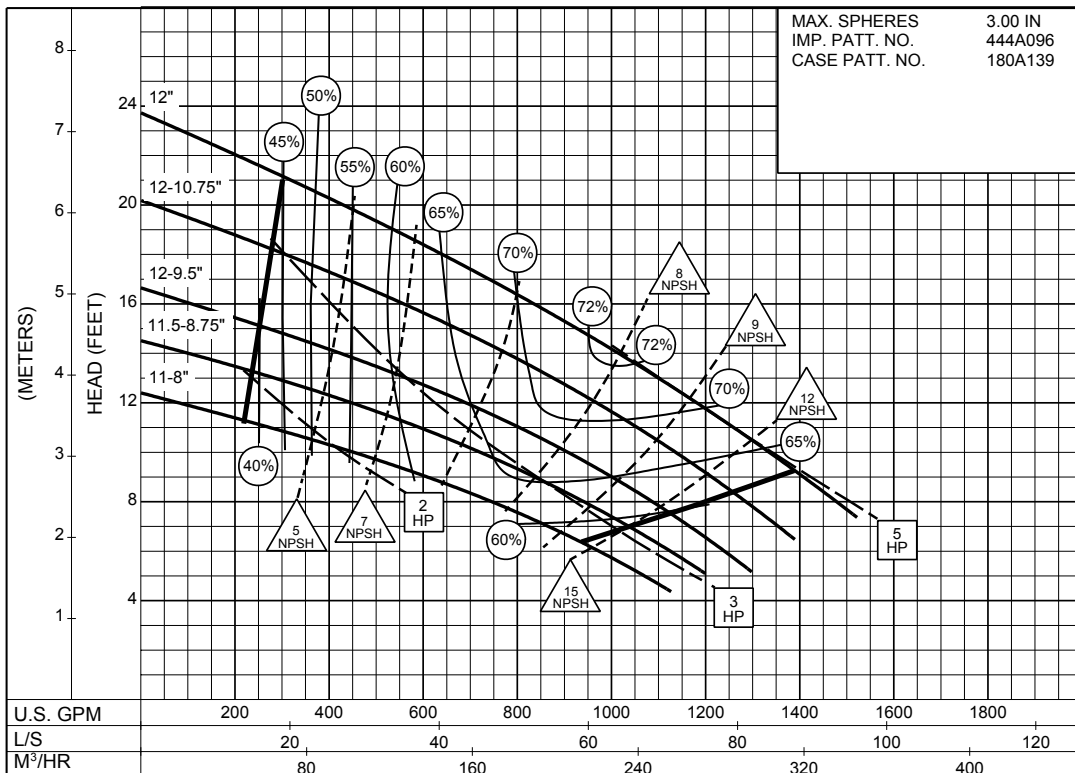
SIZE : 6x6x12 TYPE : 610 IMPELLER : Enclosed R. P. M. : 875



8PC-115573

**875**  
RPM

SIZE : 6x6x12 TYPE : 610 IMPELLER : Enclosed R. P. M. : 700



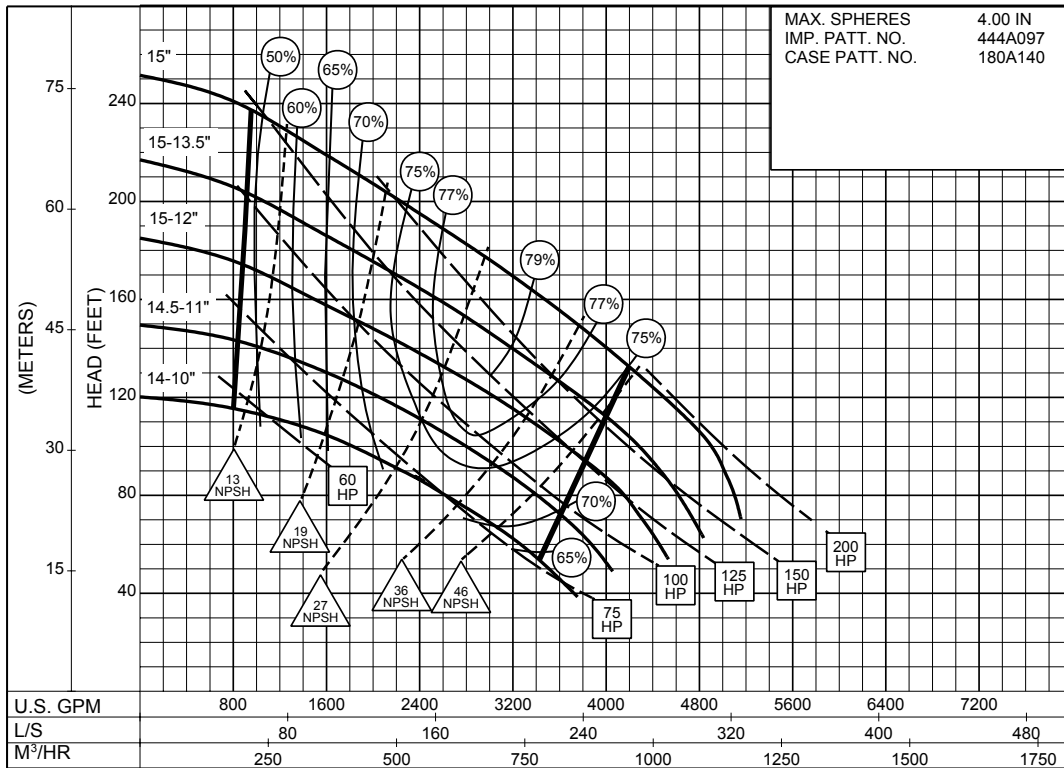
8PC-115574

**700**  
RPM

# 6 x 8 x 15 SERIES 610

ENCLOSED IMPELLER

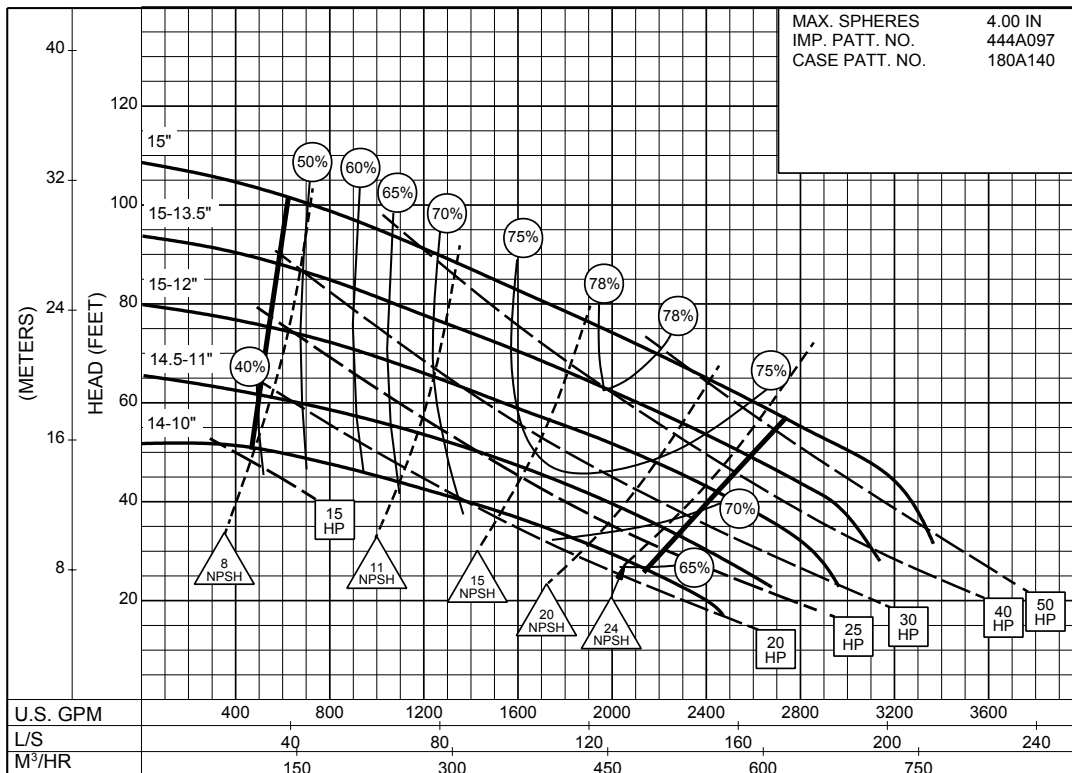
SIZE : 6x8x15 TYPE : 610 IMPELLER : Enclosed R. P. M. : 1750



8PC-115575

**1750**  
RPM

SIZE : 6x8x15 TYPE : 610 IMPELLER : Enclosed R. P. M. : 1150



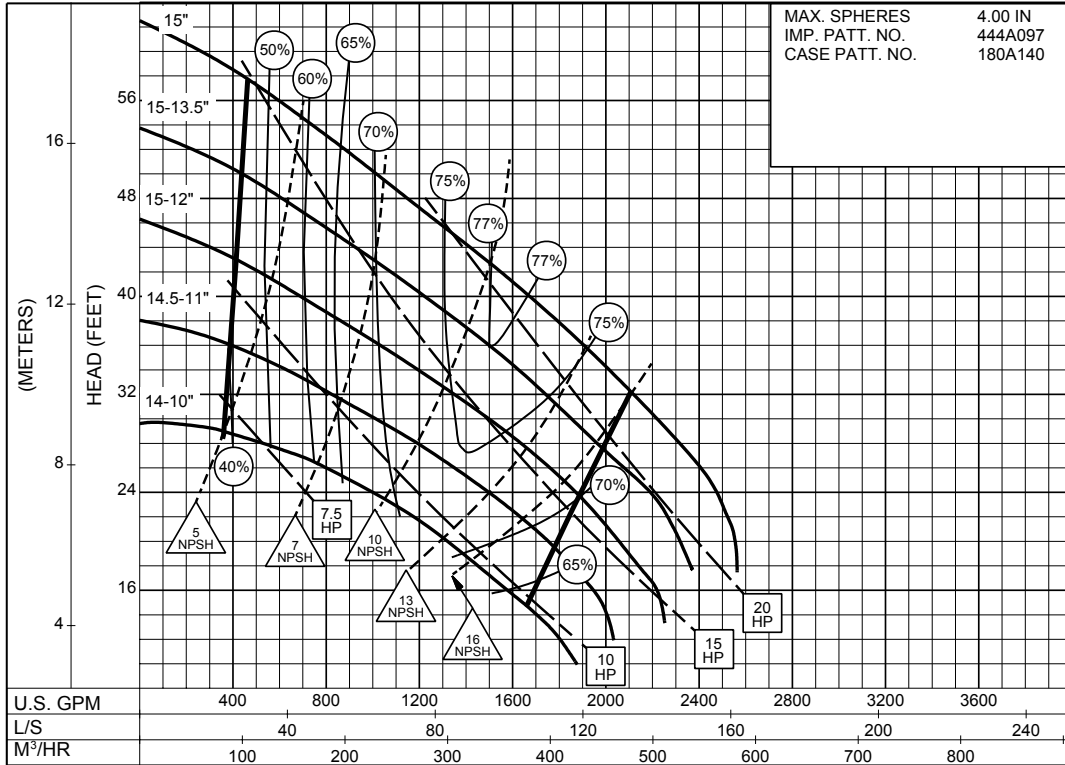
8PC-115576

**1150**  
RPM

# 6 x 8 x 15 SERIES 610

## ENCLOSED IMPELLER

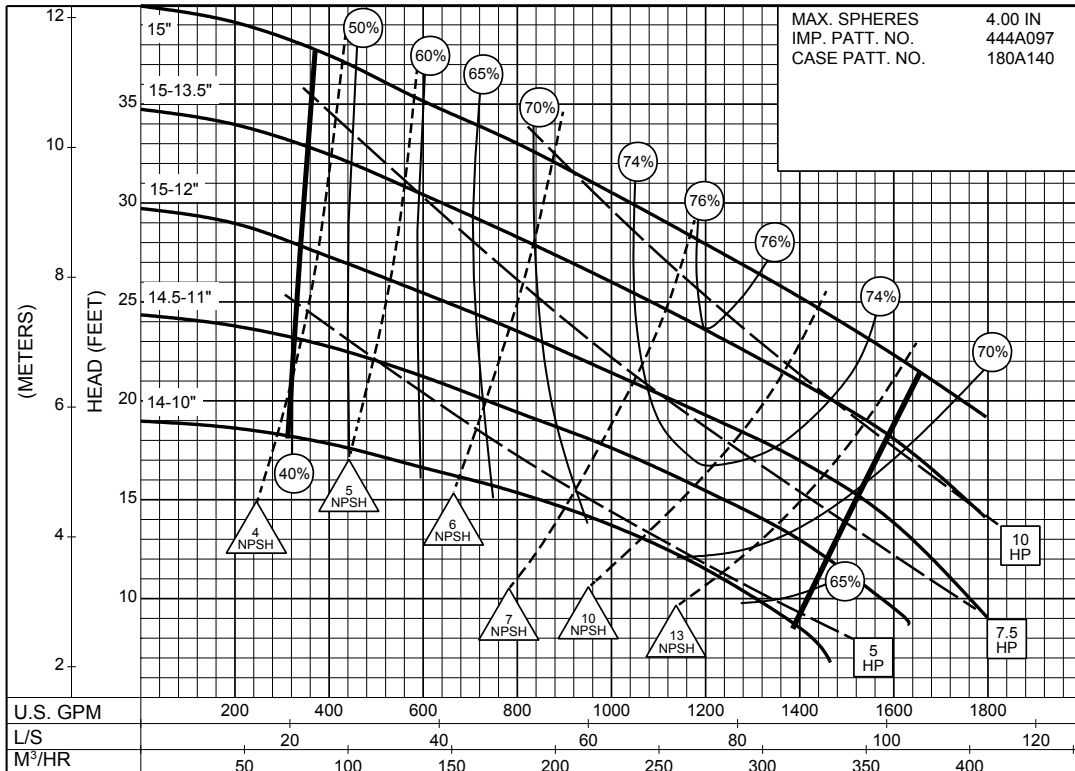
SIZE : 6x8x15 TYPE : 610 IMPELLER : Enclosed R. P. M. : 875



8PC-115577

**875**  
RPM

SIZE : 6x8x15 TYPE : 610 IMPELLER : Enclosed R. P. M. : 700



8PC-115578

**700**  
RPM

# 6 x 8 x 15 SERIES 610

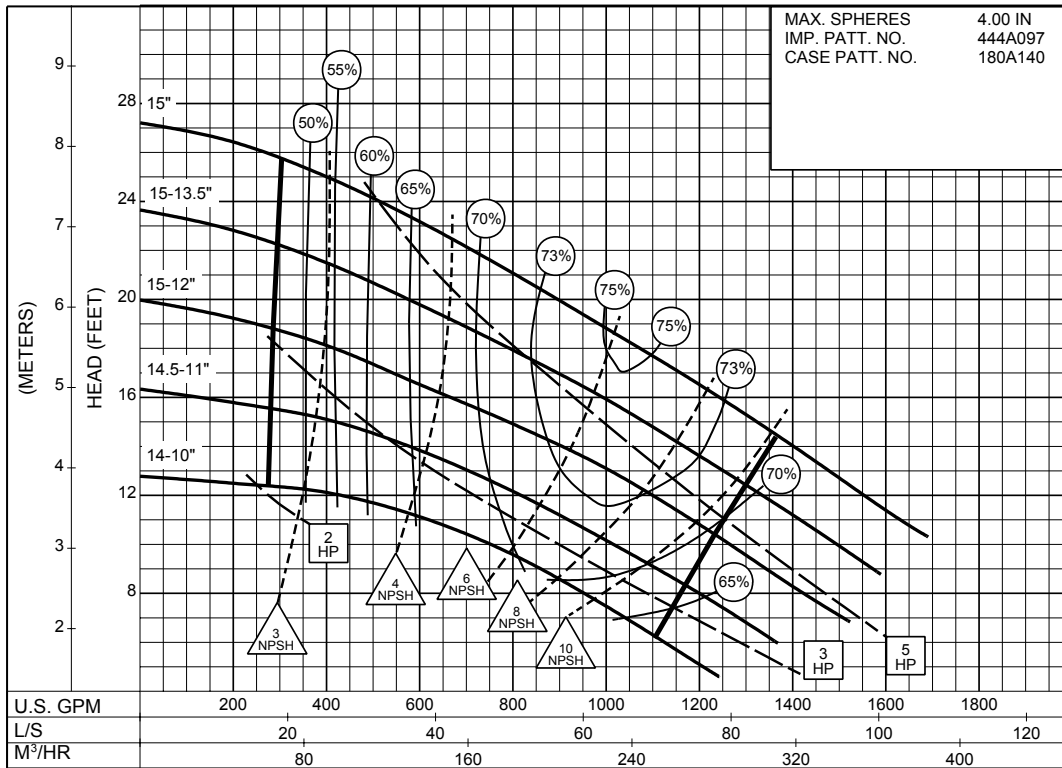
ENCLOSED IMPELLER

SIZE : 6x8x15

TYPE : 610

IMPELLER : Enclosed

R. P. M. : 580



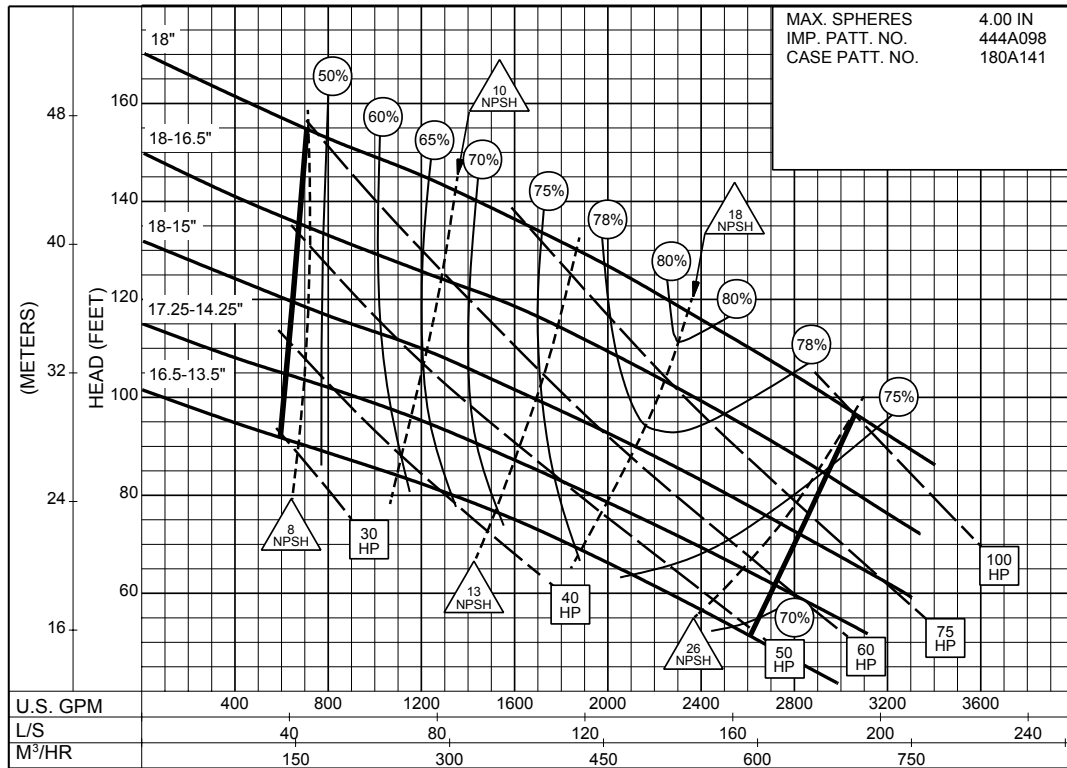
8PC-115579



**6 x 8 x 18**  
**SERIES 610**

ENCLOSED IMPELLER

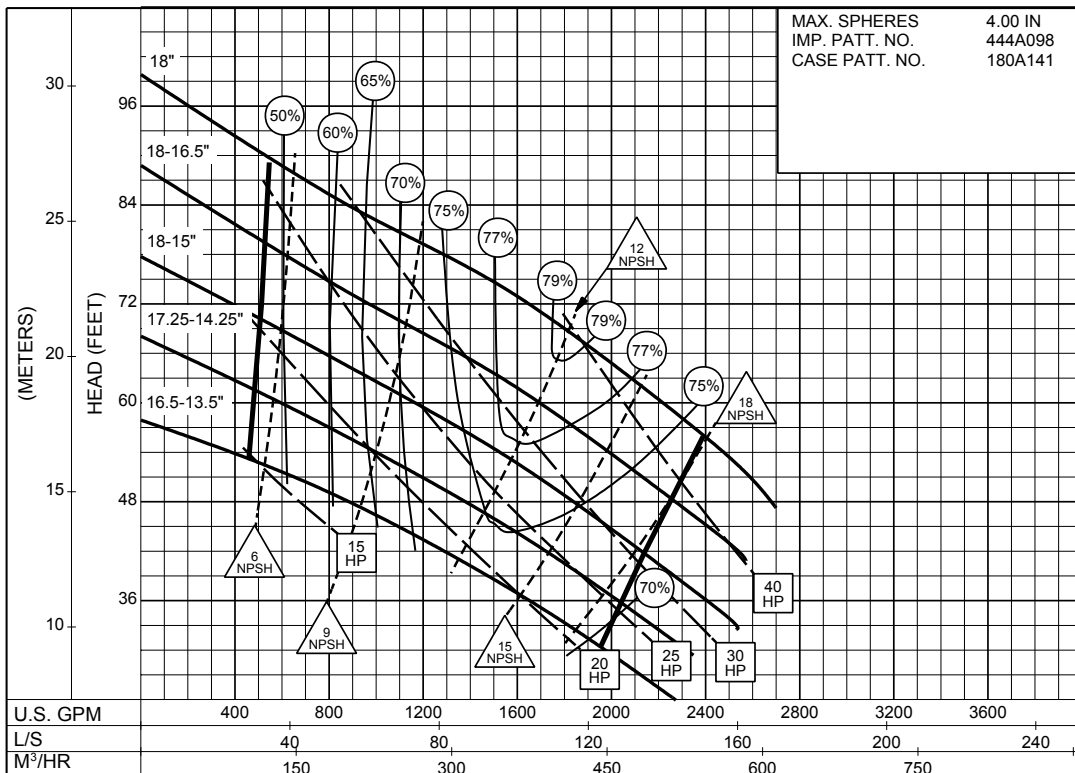
SIZE : 6x8x18 TYPE : 610 IMPELLER : Enclosed R. P. M. : 1150



**1150**  
RPM

8PC-115580

SIZE : 6x8x18 TYPE : 610 IMPELLER : Enclosed R. P. M. : 875

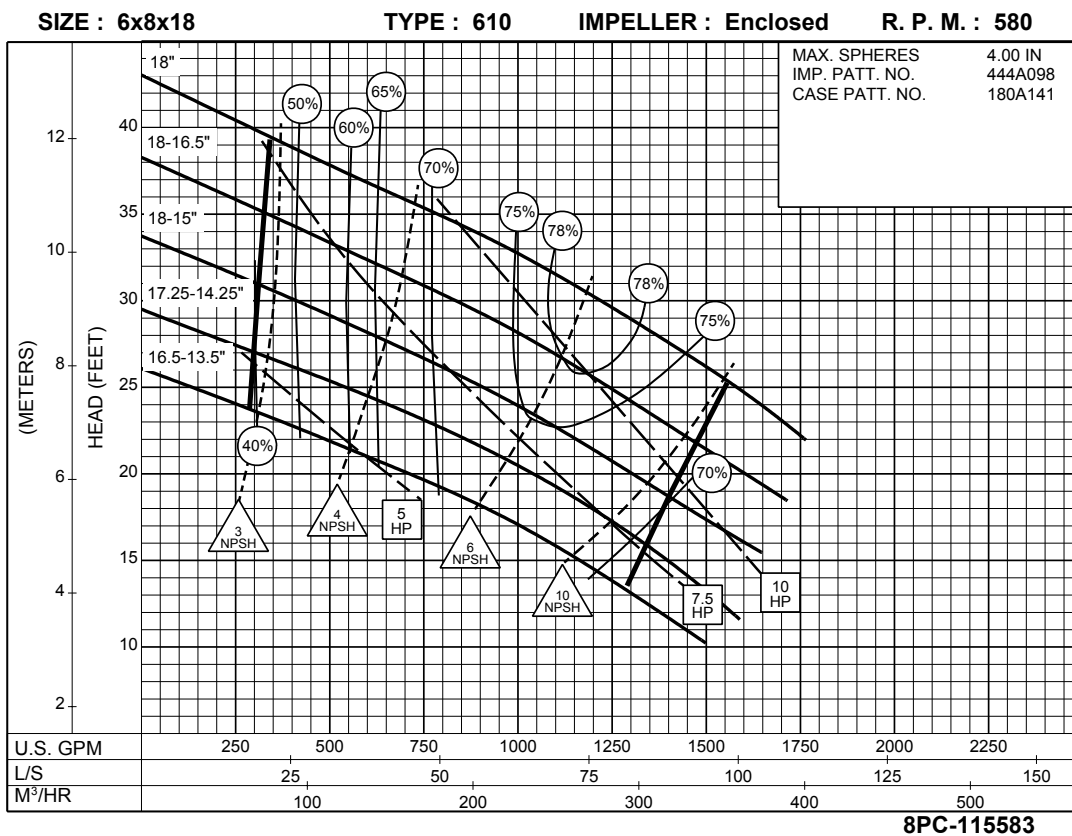
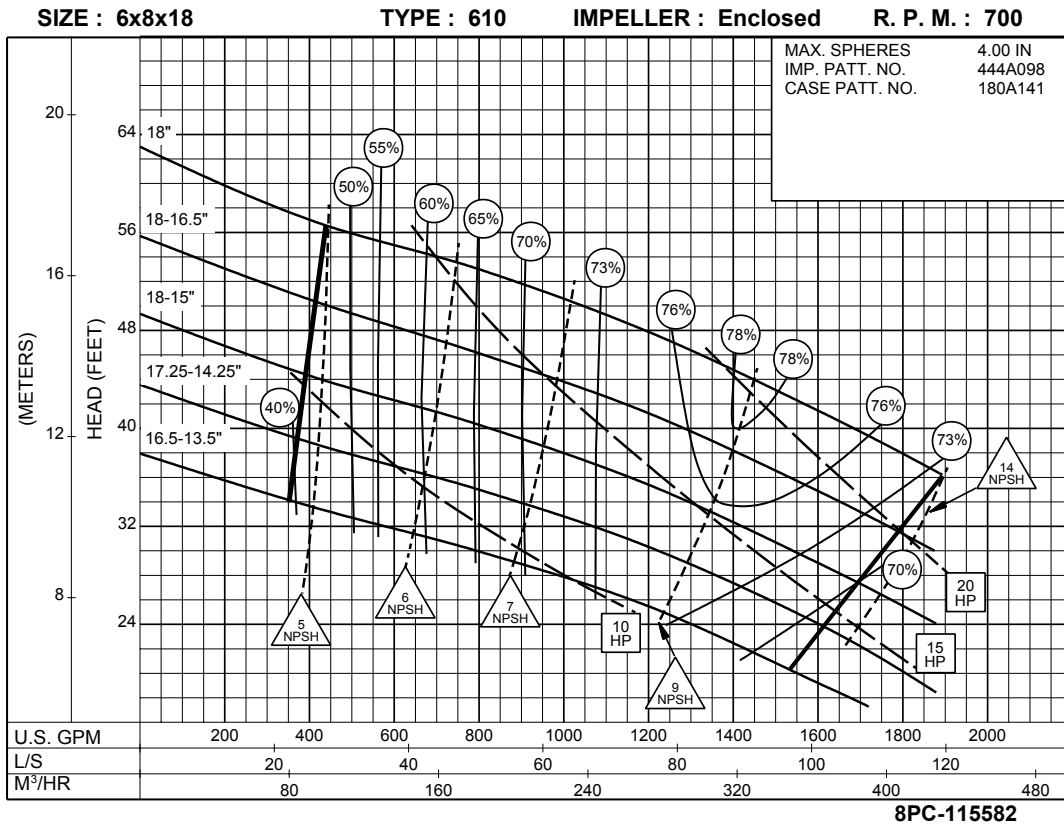


**875**  
RPM

8PC-115581

# 6 x 8 x 18 SERIES 610

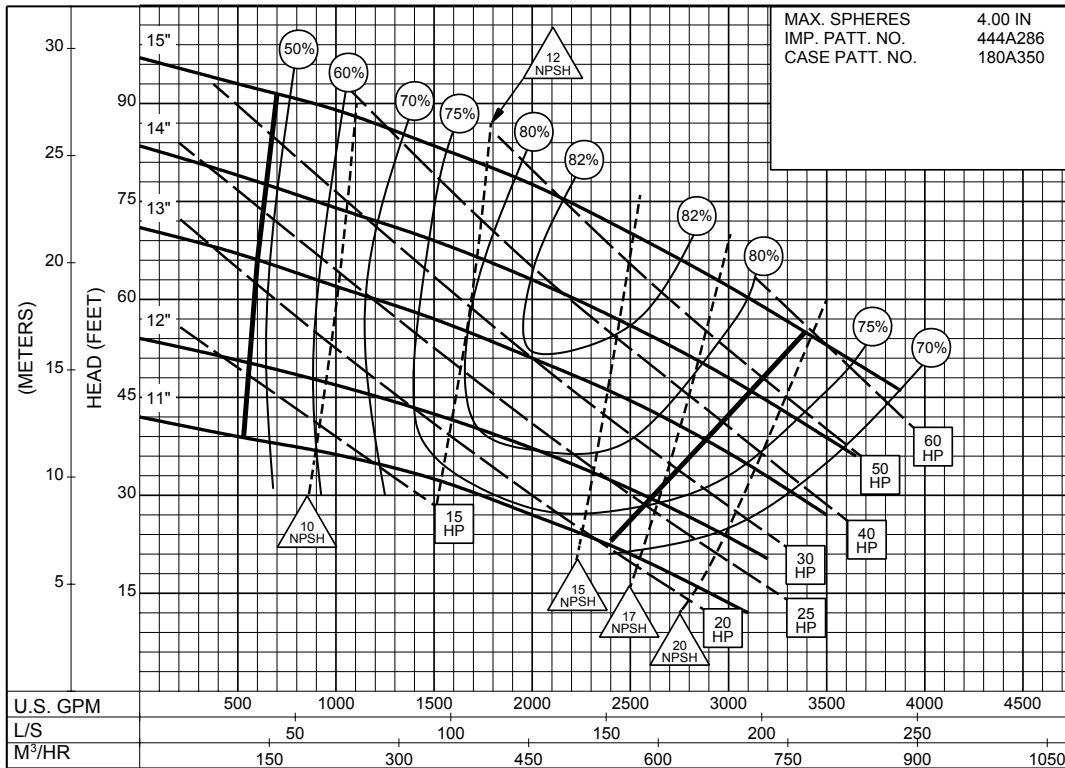
## ENCLOSED IMPELLER



# 8 x 8 x 15A SERIES 610

## ENCLOSED IMPELLER

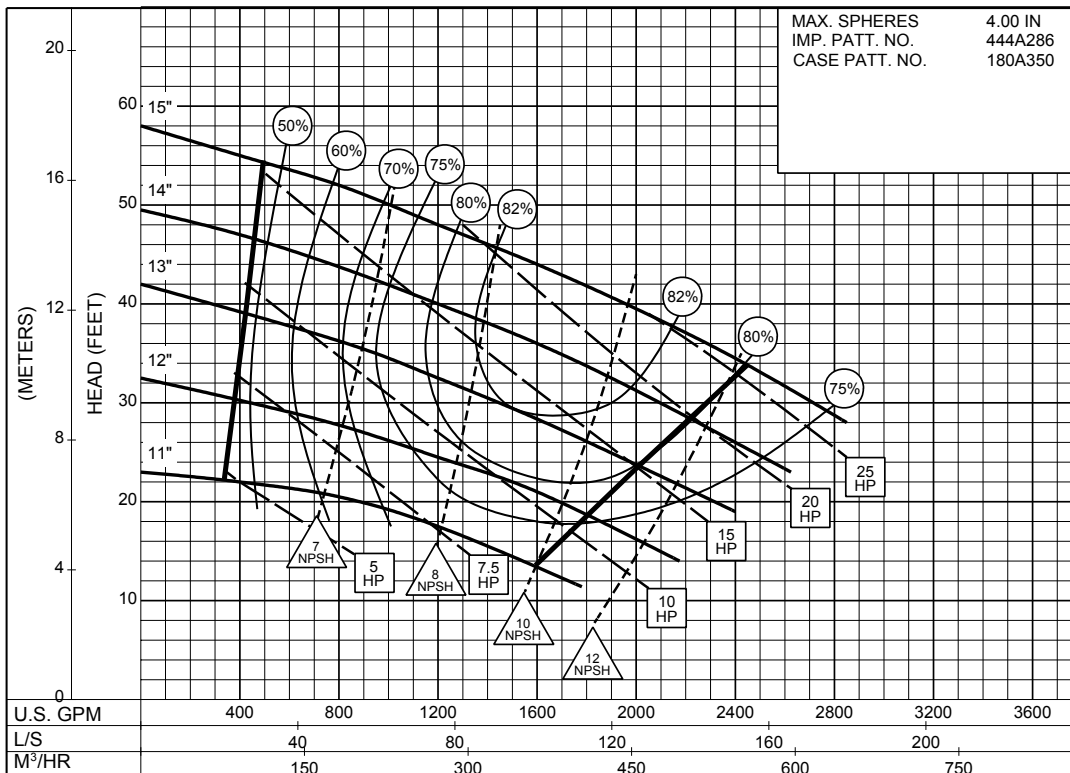
SIZE : 8x8x15A      TYPE : 610      IMPELLER : Enclosed      R. P. M. : 1150



**1150**  
RPM

8PC-142576

SIZE : 8x8x15A      TYPE : 610      IMPELLER : Enclosed      R. P. M. : 875

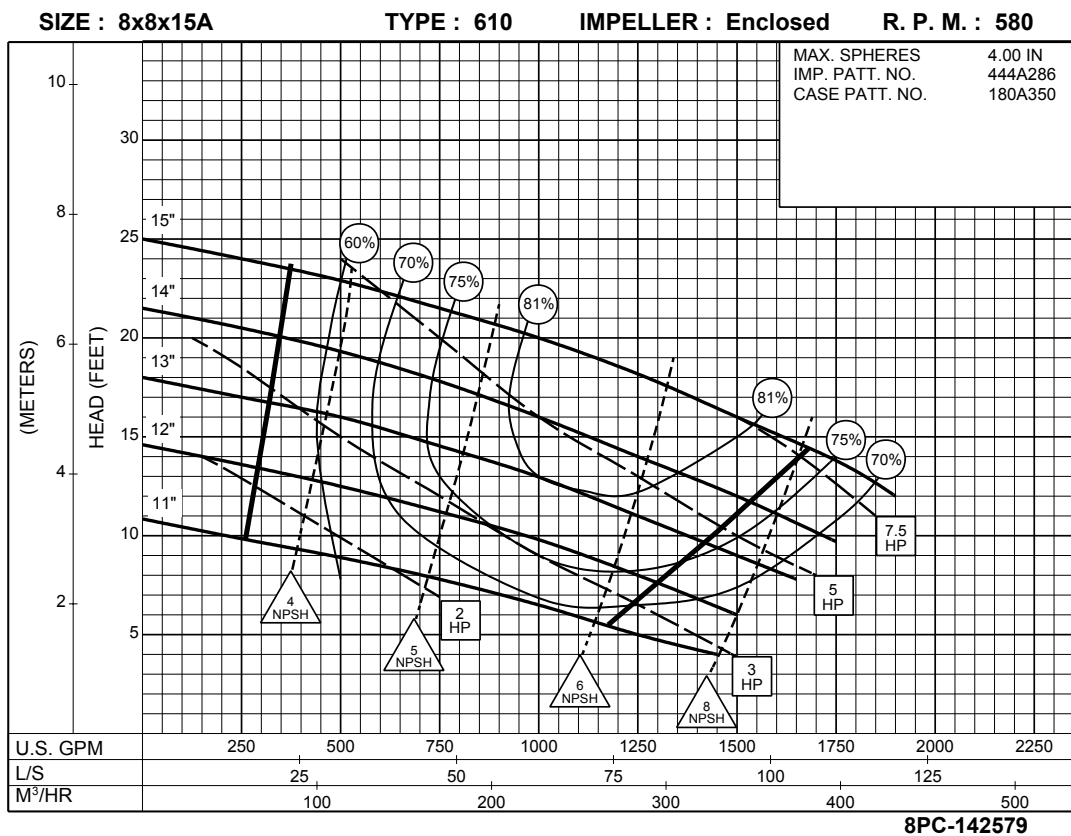
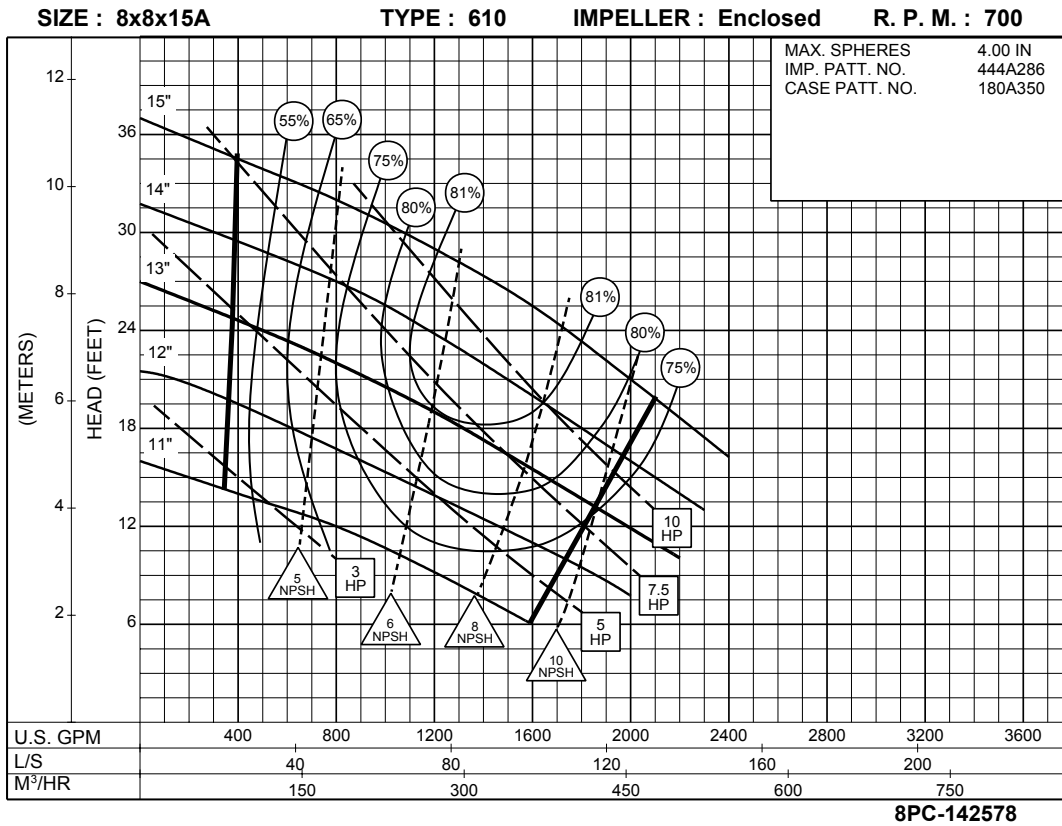


**875**  
RPM

8PC-142577

# 8 x 8 x 15A SERIES 610

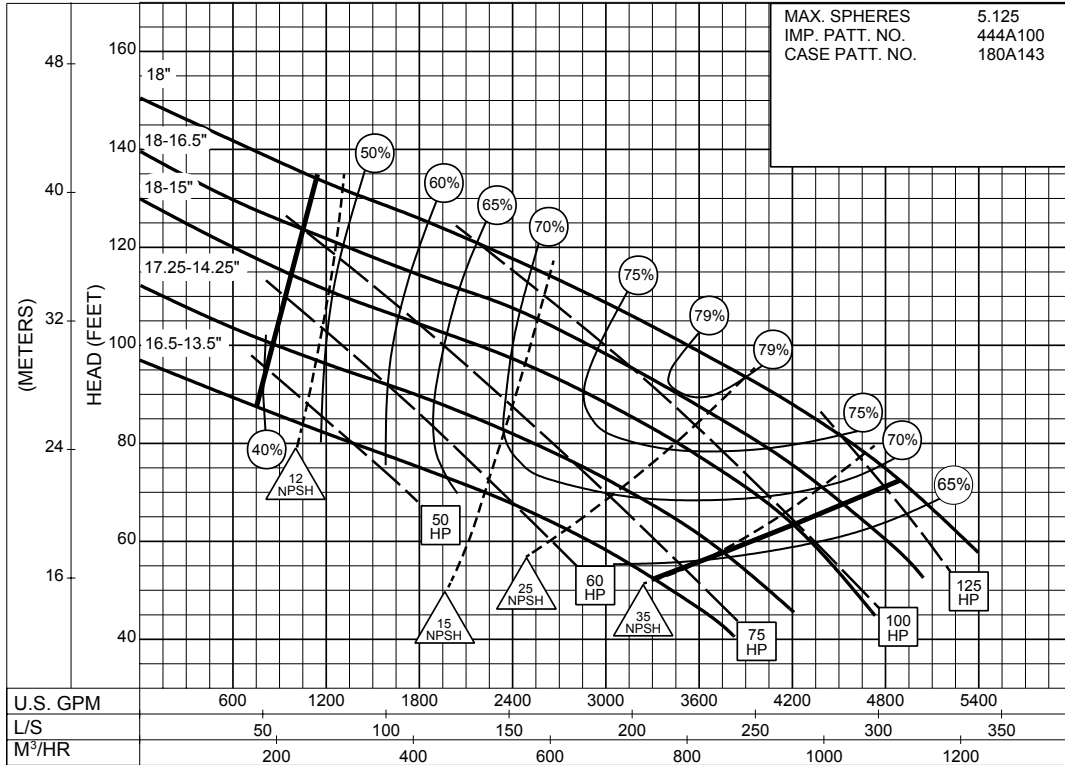
## ENCLOSED IMPELLER



**8 x 10 x 18**  
**SERIES 610**

ENCLOSED IMPELLER

SIZE : 8x10x18 TYPE : 610 IMPELLER : Enclosed R. P. M. : 1150

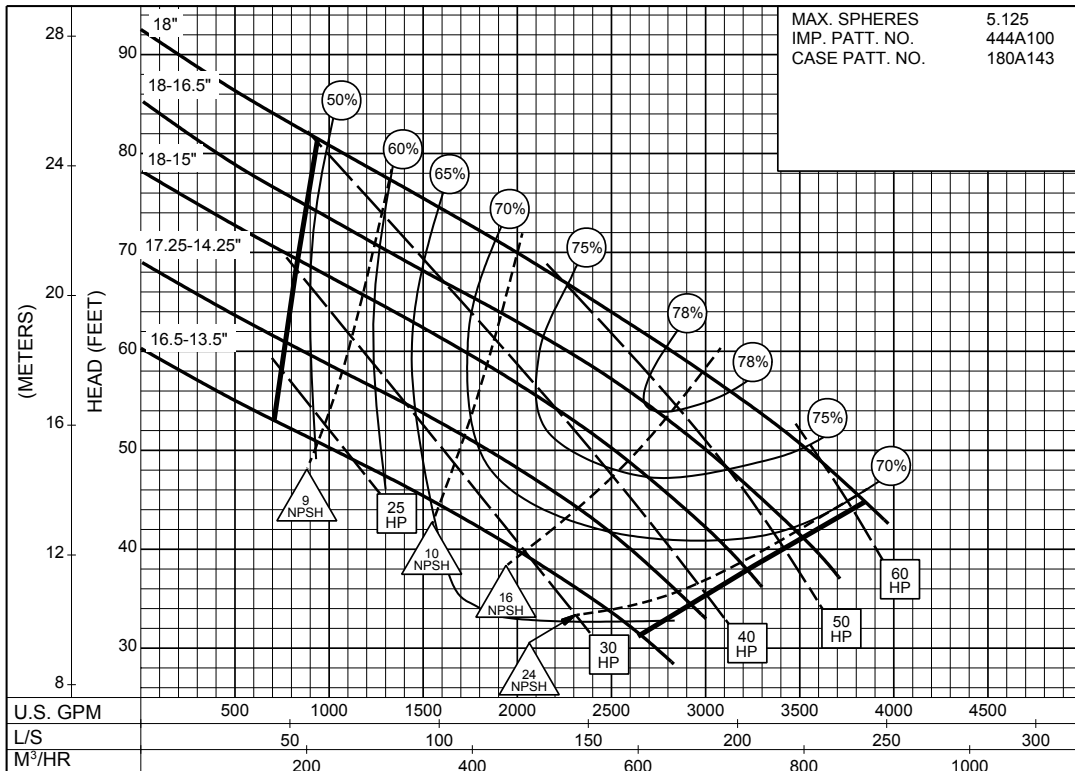


MAX. SPHERES 5.125  
IMP. PATT. NO. 444A100  
CASE PATT. NO. 180A143

**1150**  
RPM

8PC-115588

SIZE : 8x10x18 TYPE : 610 IMPELLER : Enclosed R. P. M. : 875



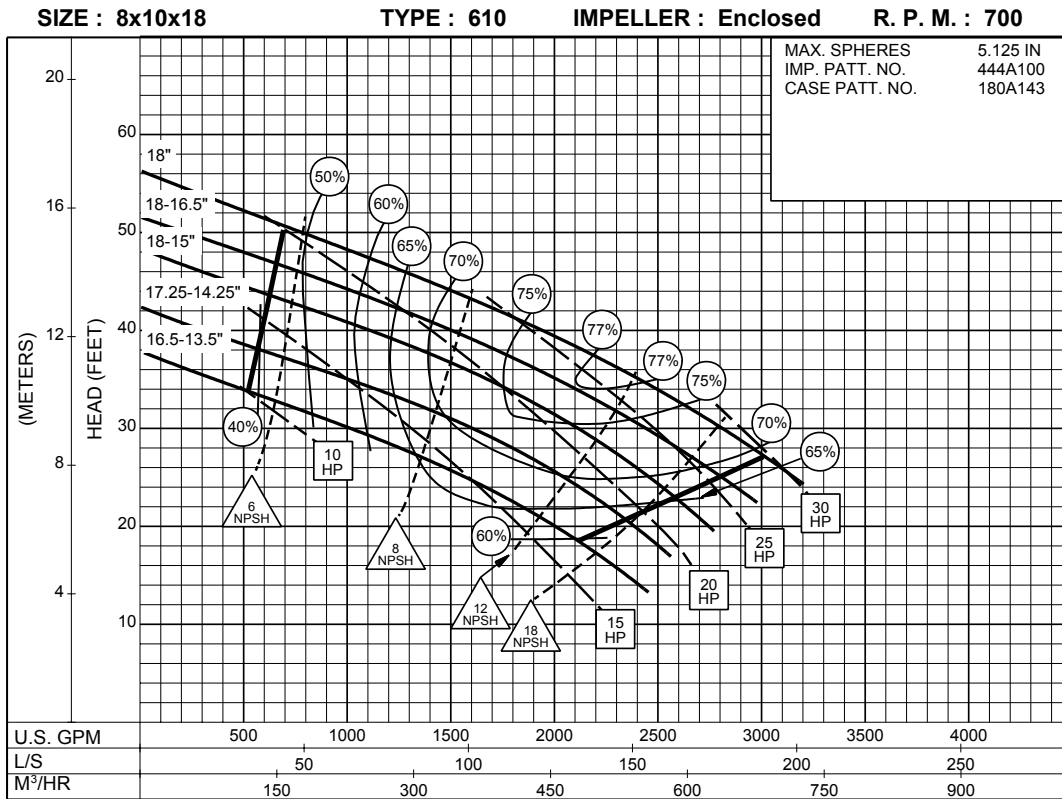
MAX. SPHERES 5.125  
IMP. PATT. NO. 444A100  
CASE PATT. NO. 180A143

**875**  
RPM

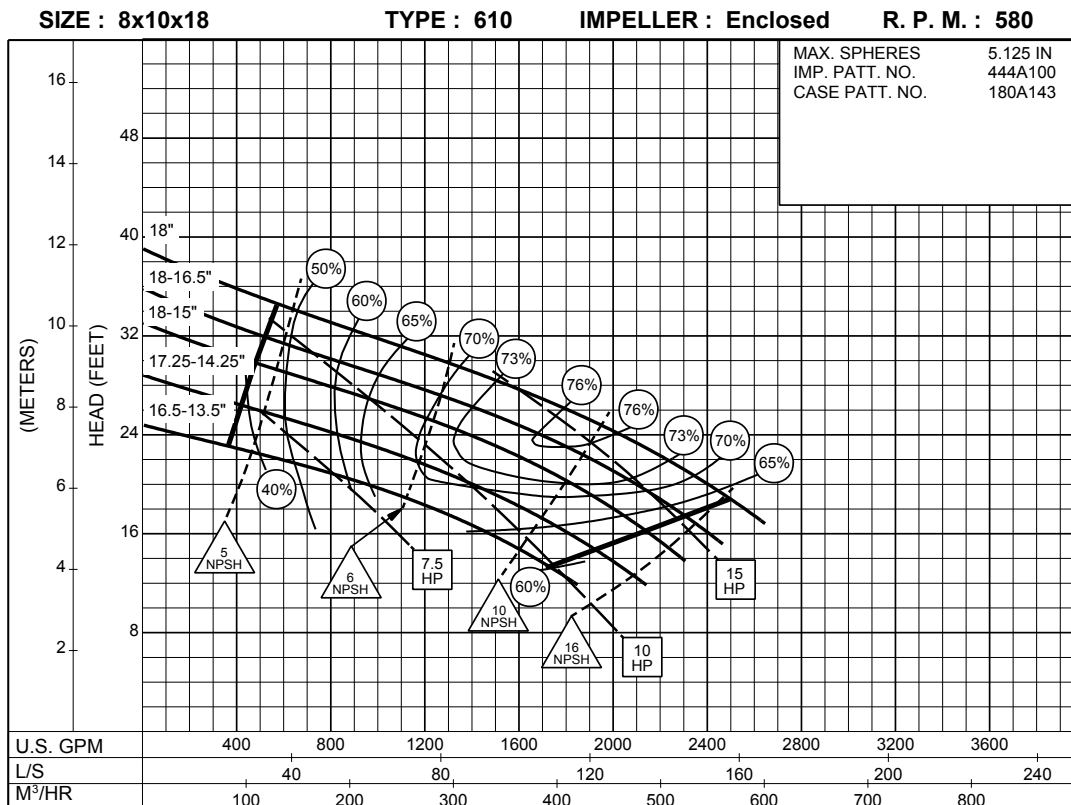
8PC-115589

# 8 x 10 x 18 SERIES 610

## ENCLOSED IMPELLER



8PC-115590

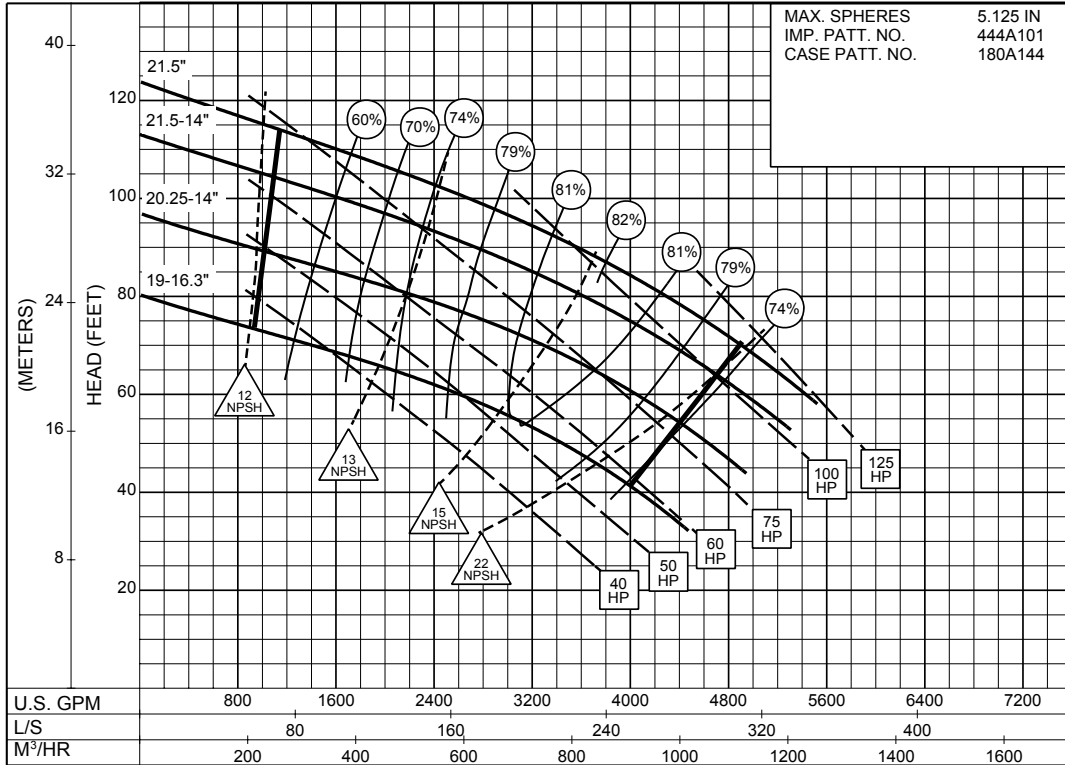


8PC-115591

**8 x 10 x 22**  
**SERIES 610**

ENCLOSED IMPELLER

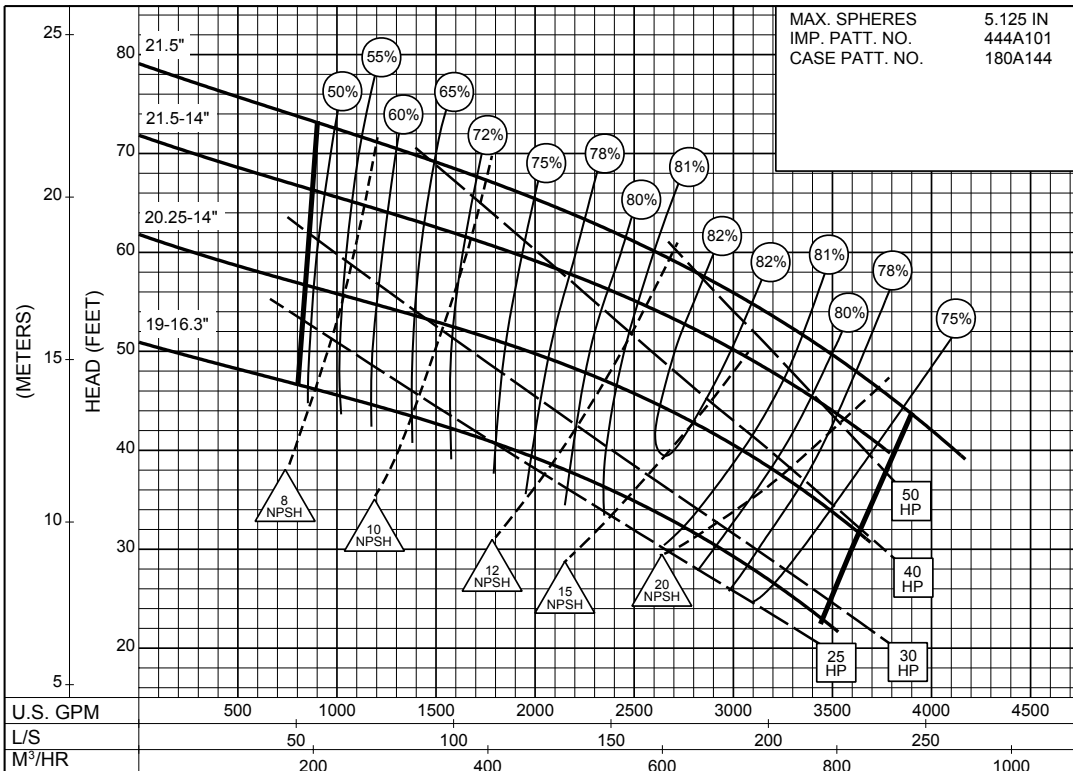
SIZE : 8x10x22 TYPE : 610 IMPELLER : Enclosed R. P. M. : 875



8PC-115592B

**875**  
RPM

SIZE : 8x10x22 TYPE : 610 IMPELLER : Enclosed R. P. M. : 700

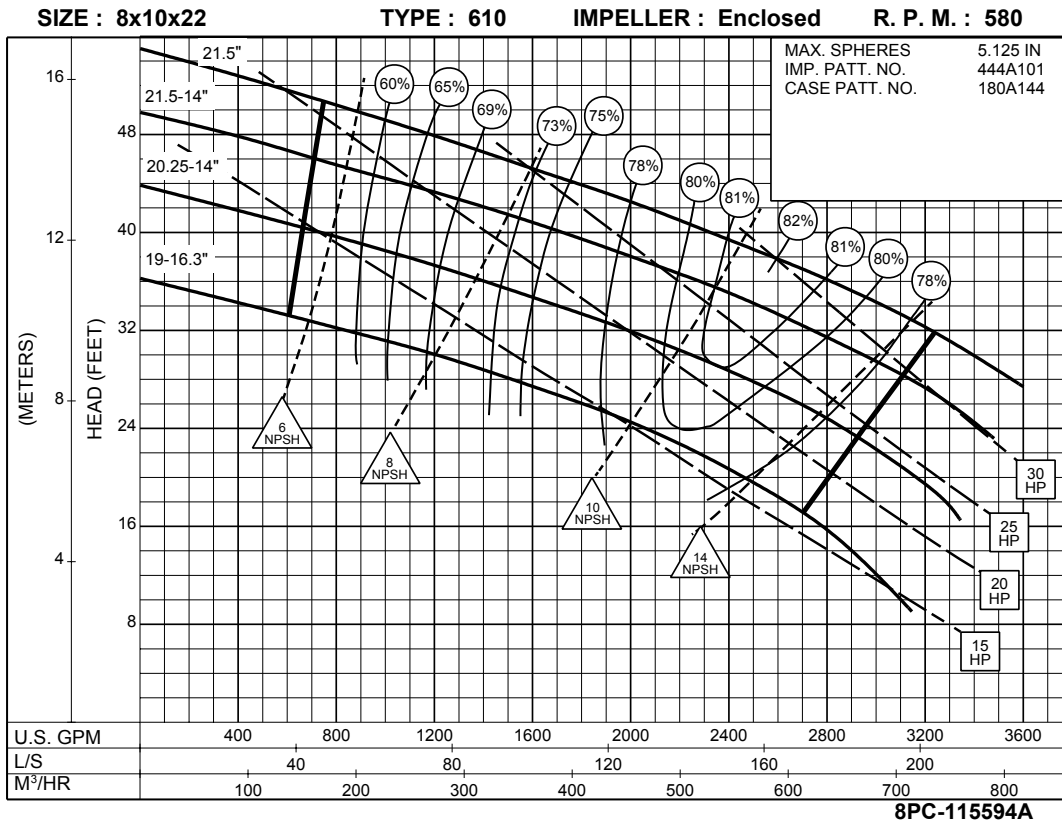


8PC-115593A

**700**  
RPM

# 8 x 10 x 22 SERIES 610

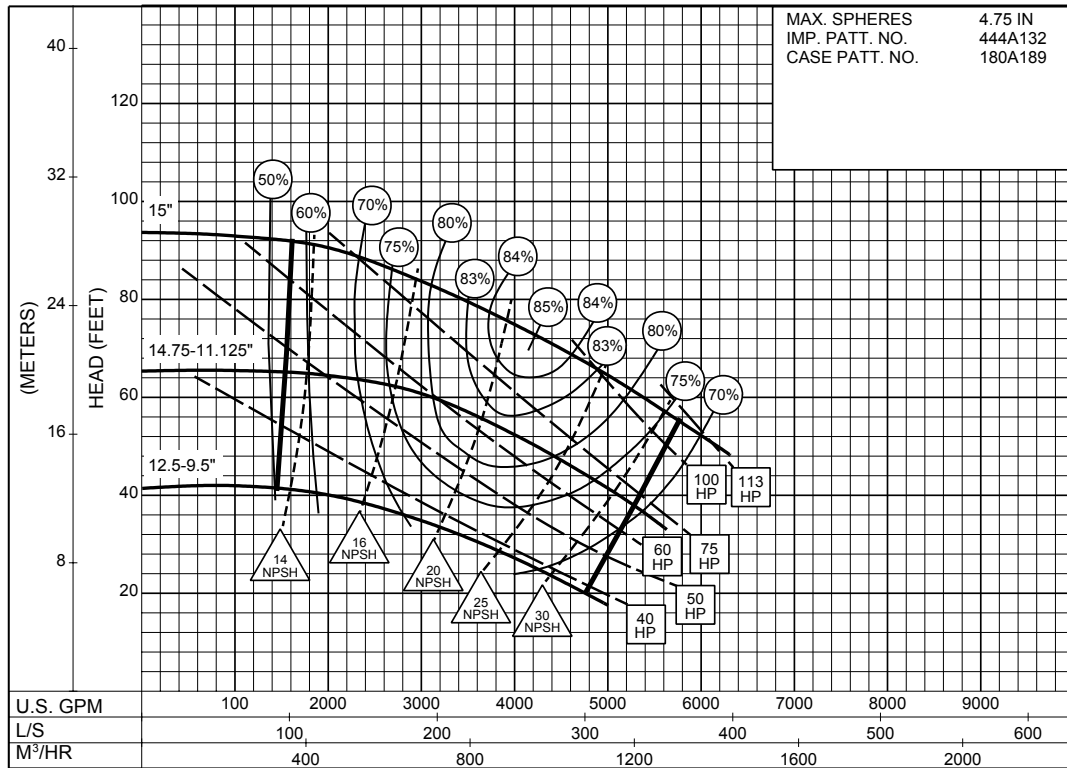
ENCLOSED IMPELLER



**580  
RPM**



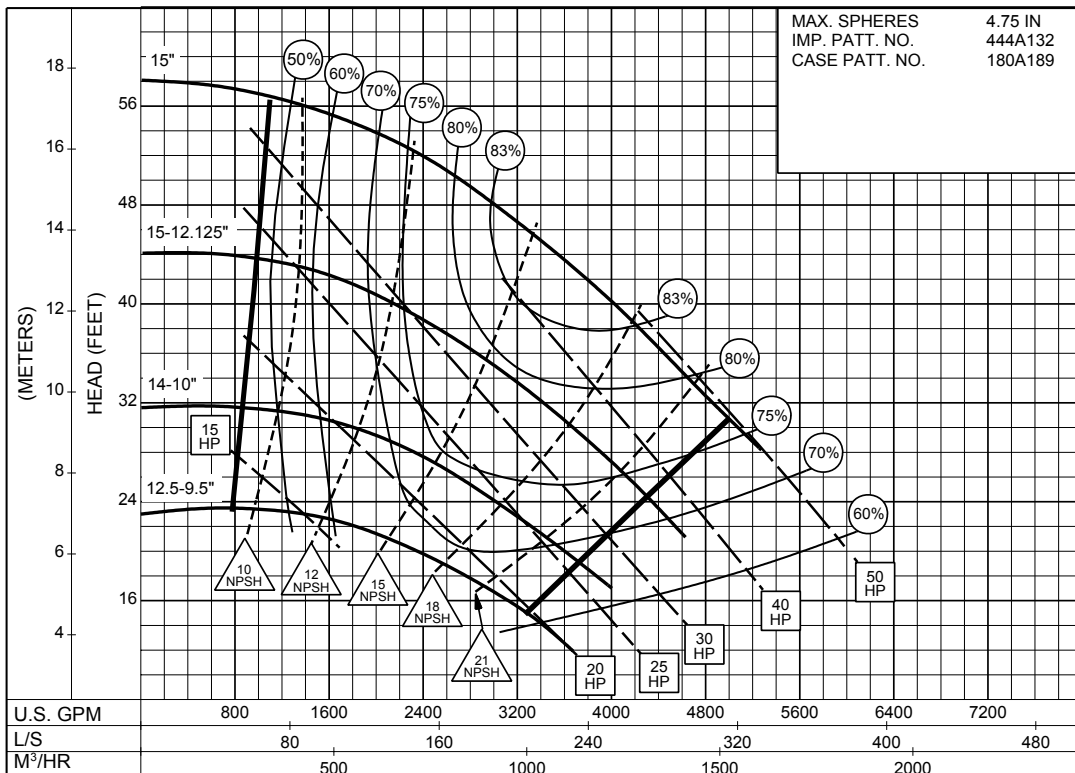
**SIZE : 10x10x15 TYPE : 610 IMPELLER : Enclosed R. P. M. : 1150**



**1150**  
RPM

**8PC-126742**

**SIZE : 10x10x15 TYPE : 610 IMPELLER : Enclosed R. P. M. : 875**

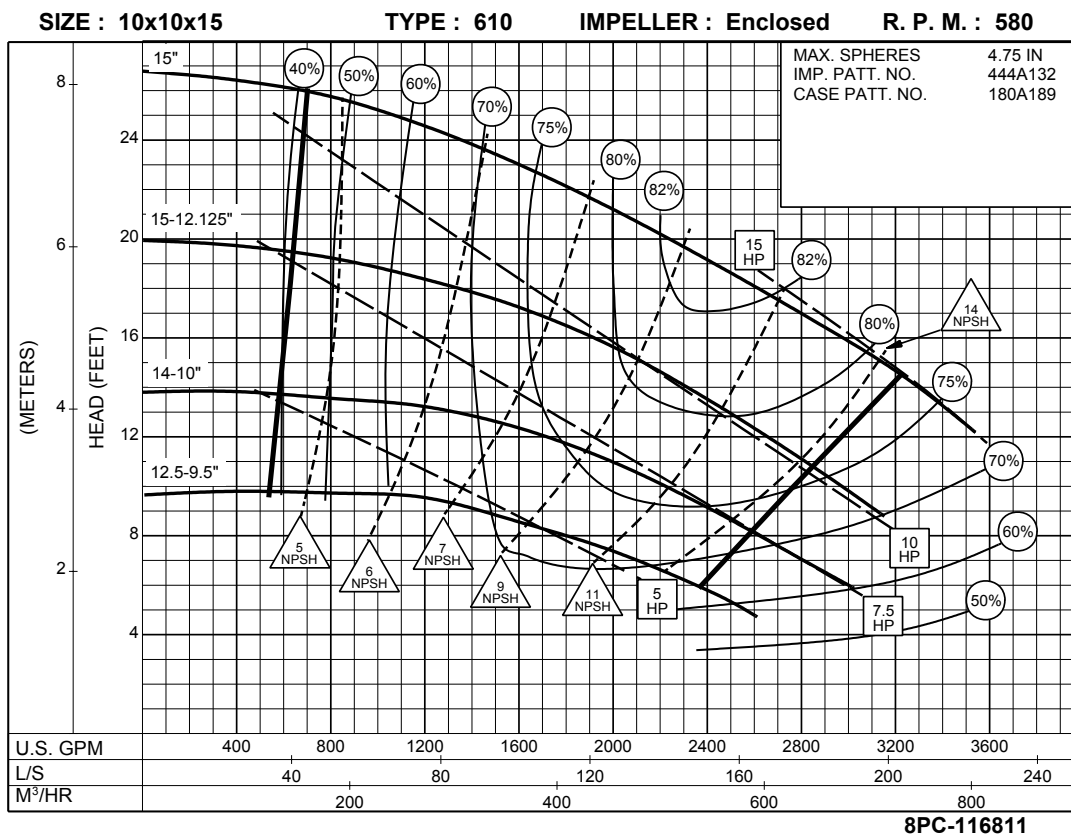
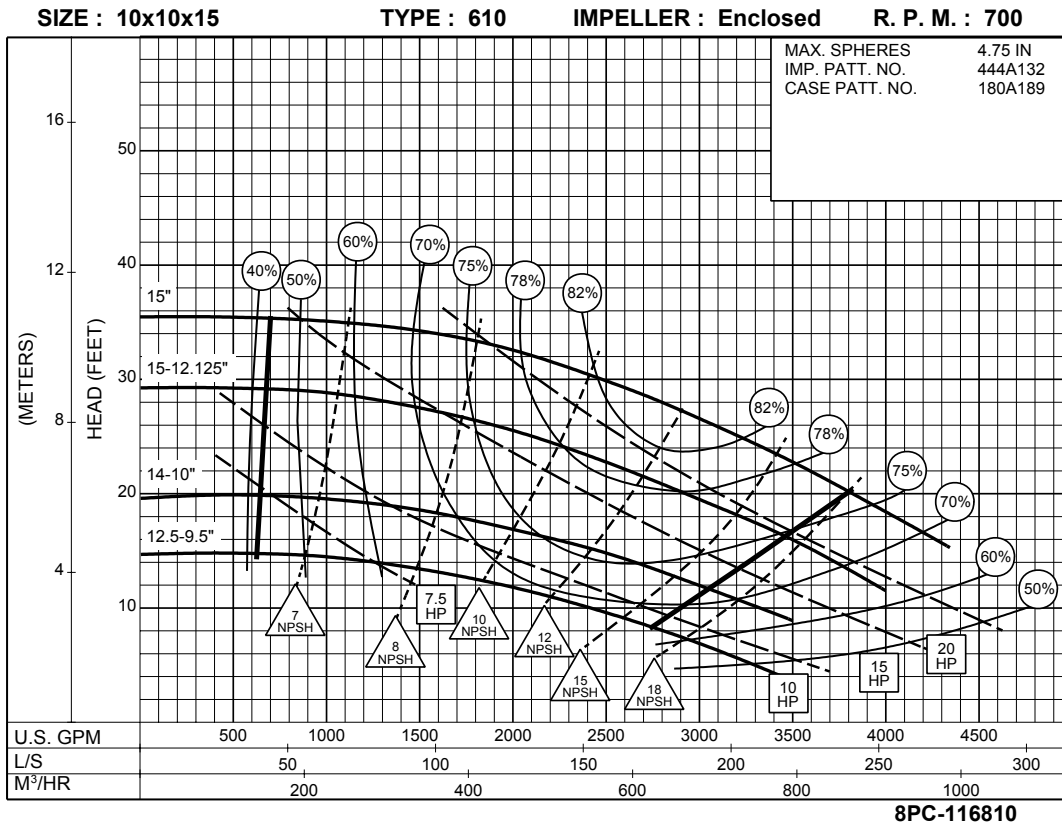


**875**  
RPM

**8PC-116809**

# 10 x 10 x 15 SERIES 610

ENCLOSED IMPELLER



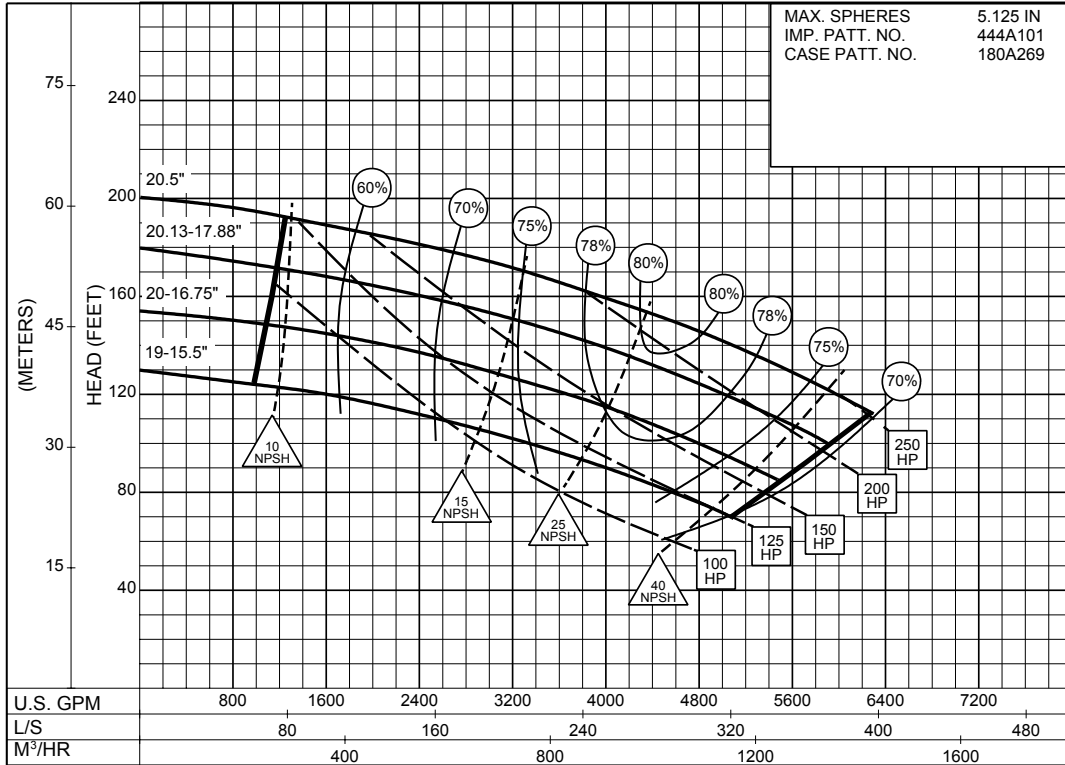
**10 x 10 x 22**  
**SERIES 610**

**ENCLOSED IMPELLER**

**SIZE : 10x10x22      TYPE : 610      IMPELLER : Enclosed      R. P. M. : 1175**

MAX. SPHERES      5.125 IN  
IMP. PATT. NO.      444A101  
CASE PATT. NO.      180A269

**1175**  
RPM

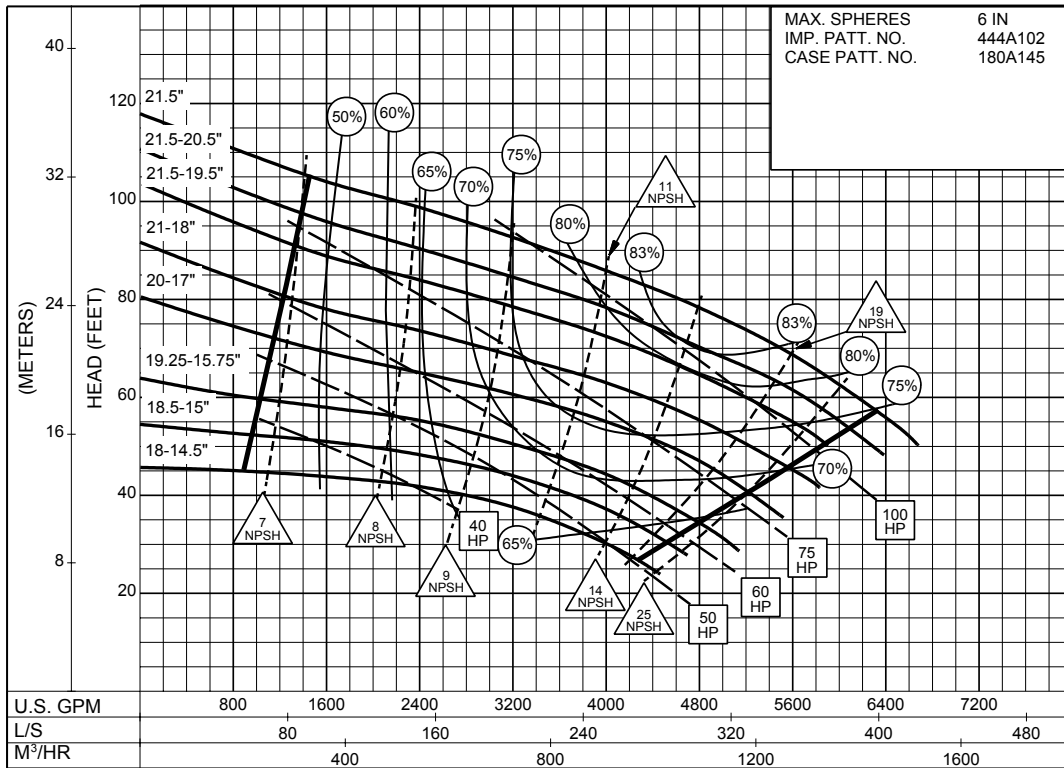


**8PC-134351**

# 10 x 12 x 22 SERIES 610

ENCLOSED IMPELLER

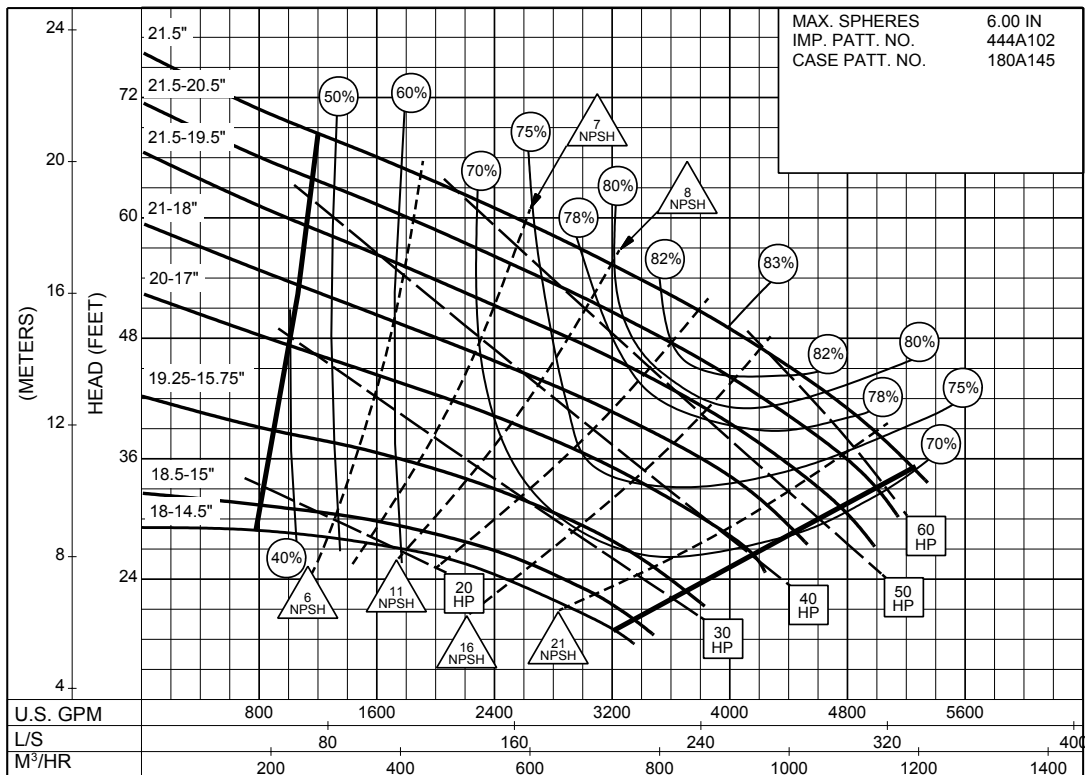
SIZE : 10x12x22 TYPE : 610 IMPELLER : Enclosed R. P. M. : 875



8PC-115595

**875**  
RPM

SIZE : 10x12x22 TYPE : 610 IMPELLER : Enclosed R. P. M. : 700



8PC-115596

**700**  
RPM

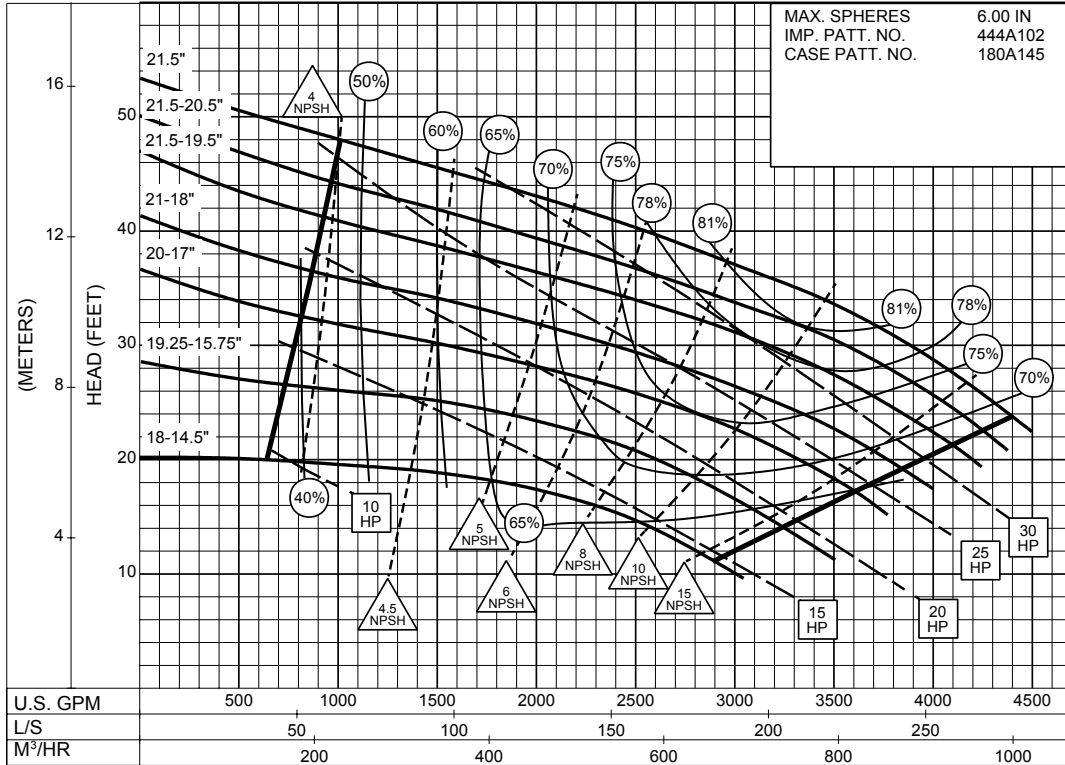
SIZE : 10x12x22

TYPE : 610

IMPELLER : Enclosed

R. P. M. : 580

MAX. SPHERES 6.00 IN  
IMP. PATT. NO. 444A102  
CASE PATT. NO. 180A145



**580**  
RPM

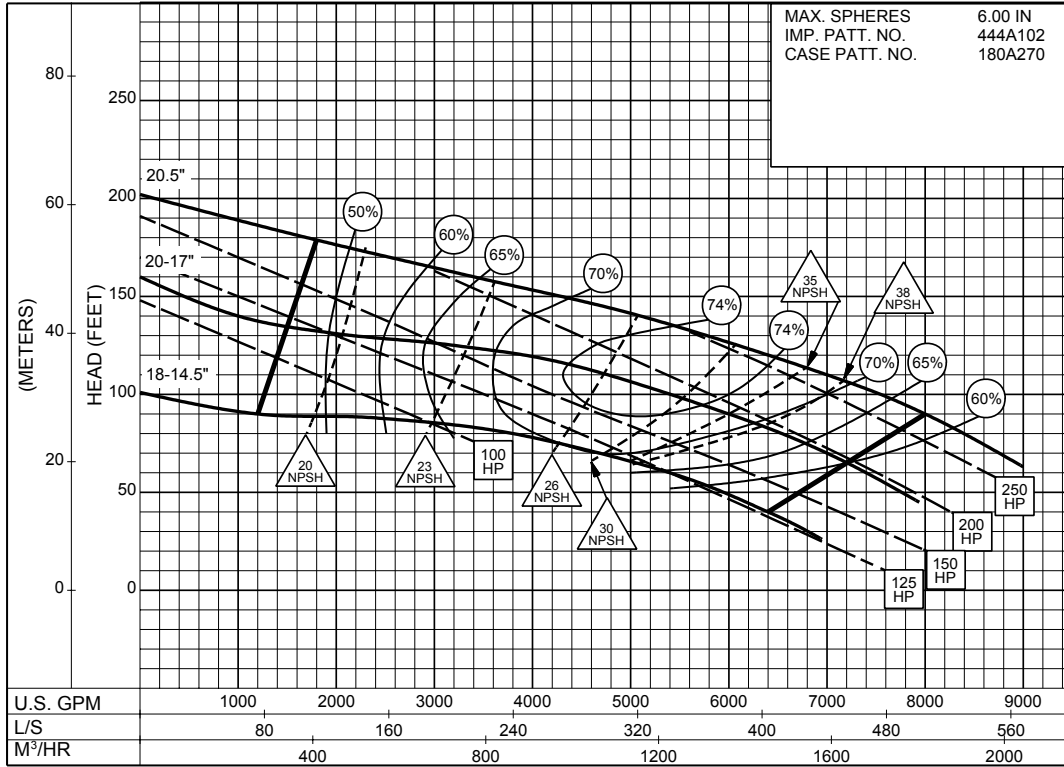
8PC-115597

# 12 x 12 x 22 SERIES 610

ENCLOSED IMPELLER

Supersedes Section 610 Page 424A  
Dated November 1992

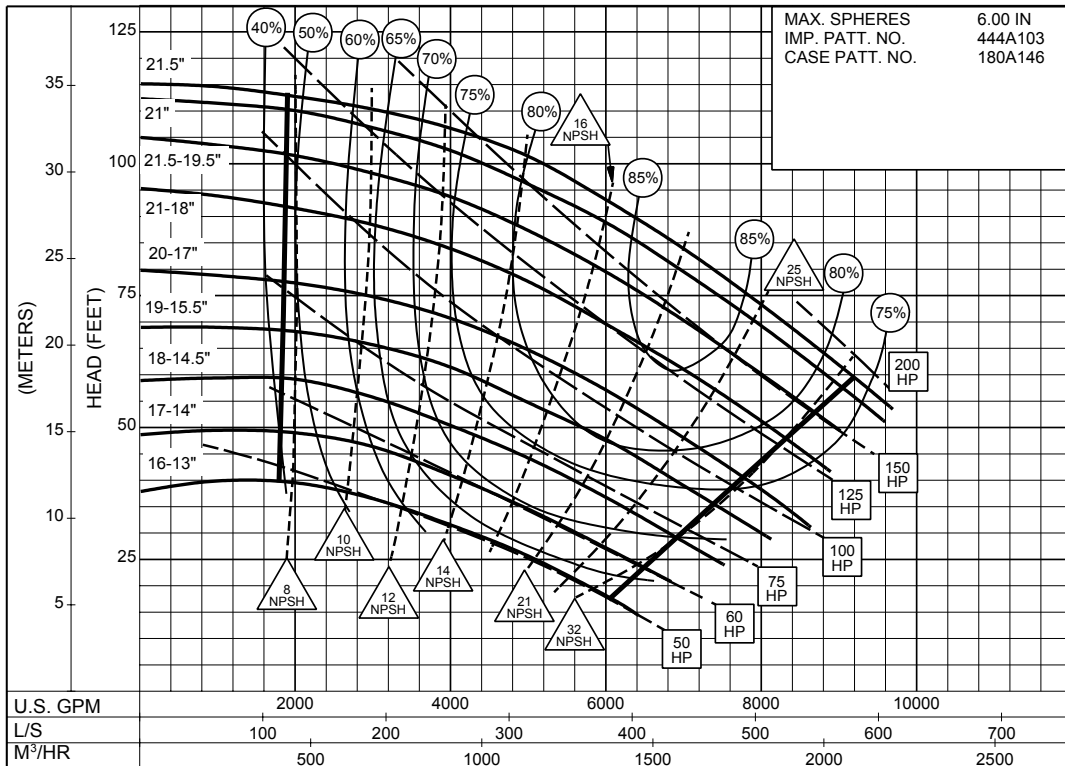
SIZE : 12x12x22      TYPE : 610      IMPELLER : Enclosed      R. P. M. : 1175



**1175**  
RPM

PC-154530

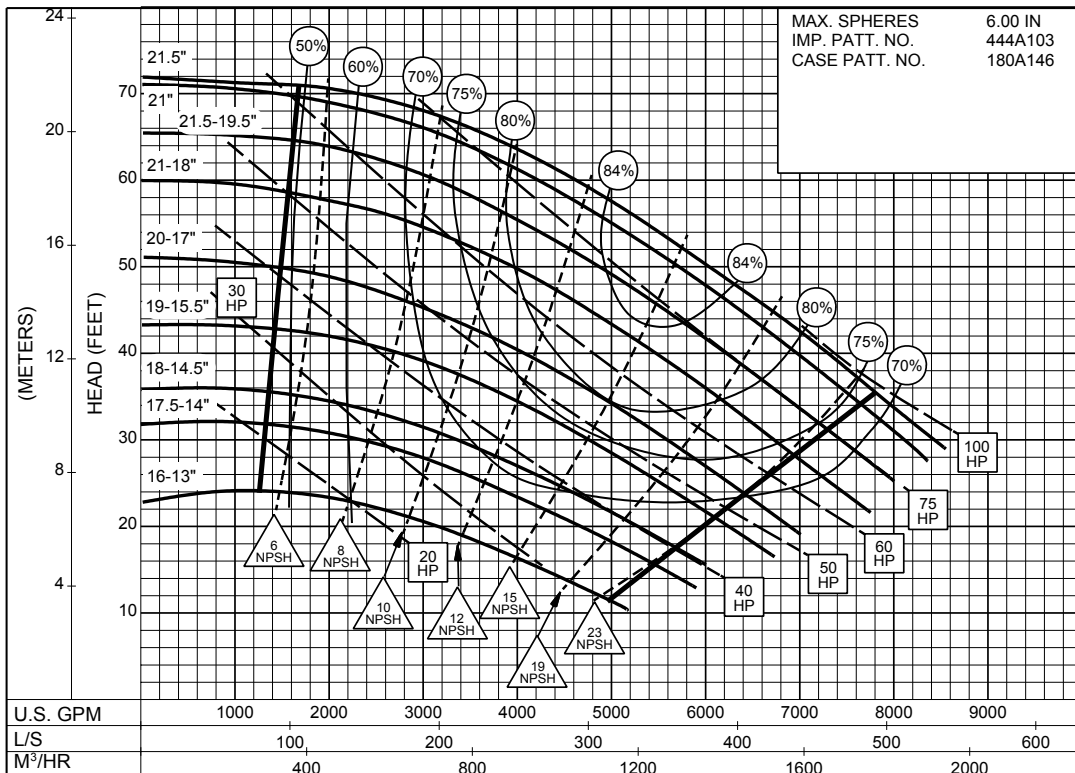
SIZE : 12x14x22A TYPE : 610 IMPELLER : Enclosed R. P. M. : 875



**875**  
RPM

8PC-126830

SIZE : 12x14x22A TYPE : 610 IMPELLER : Enclosed R. P. M. : 700

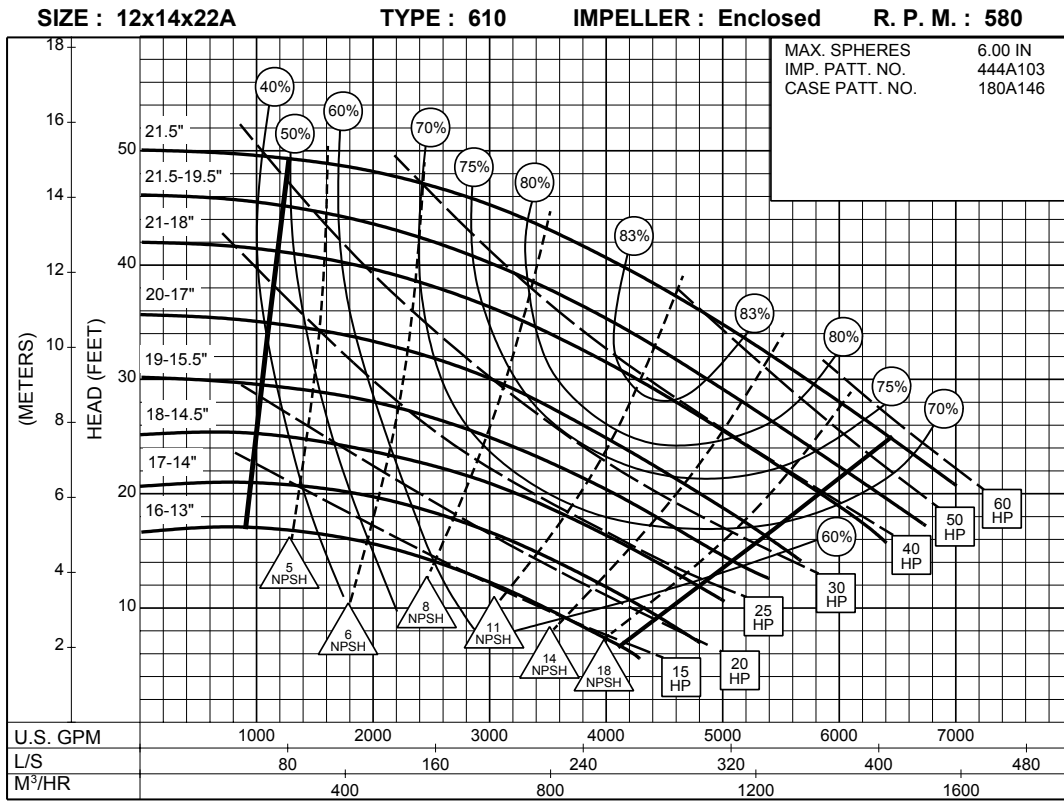


**700**  
RPM

8PC-126831

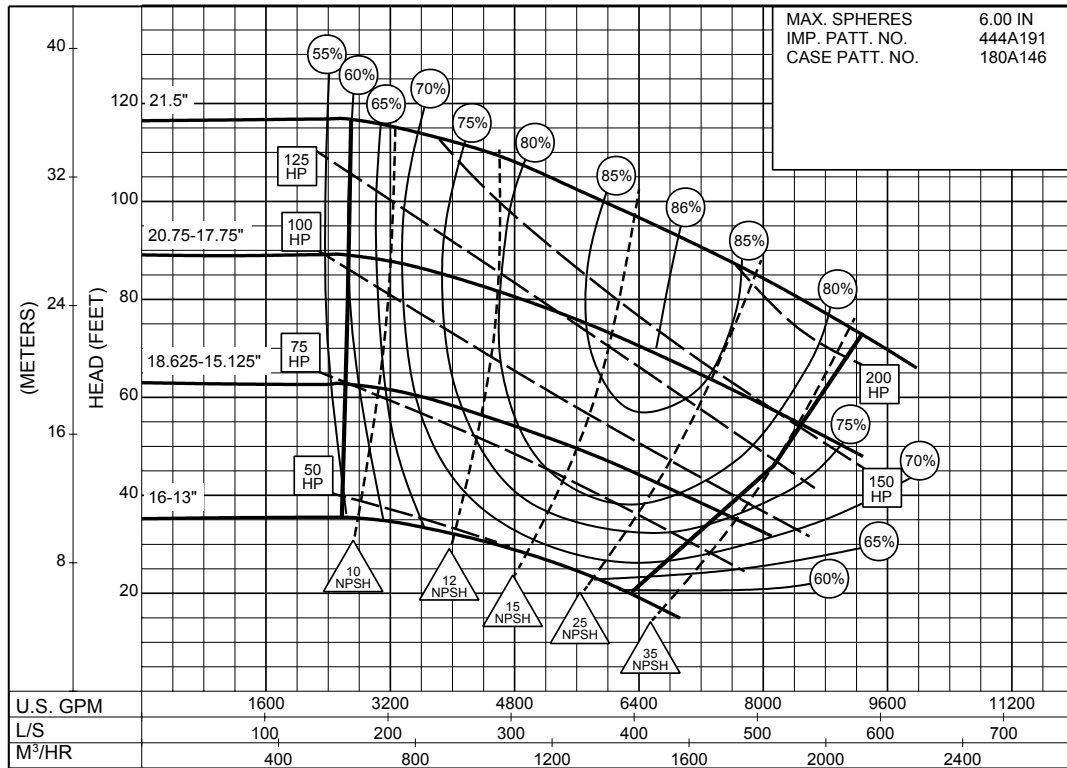
# 12 x 14 x 22A SERIES 610

ENCLOSED IMPELLER





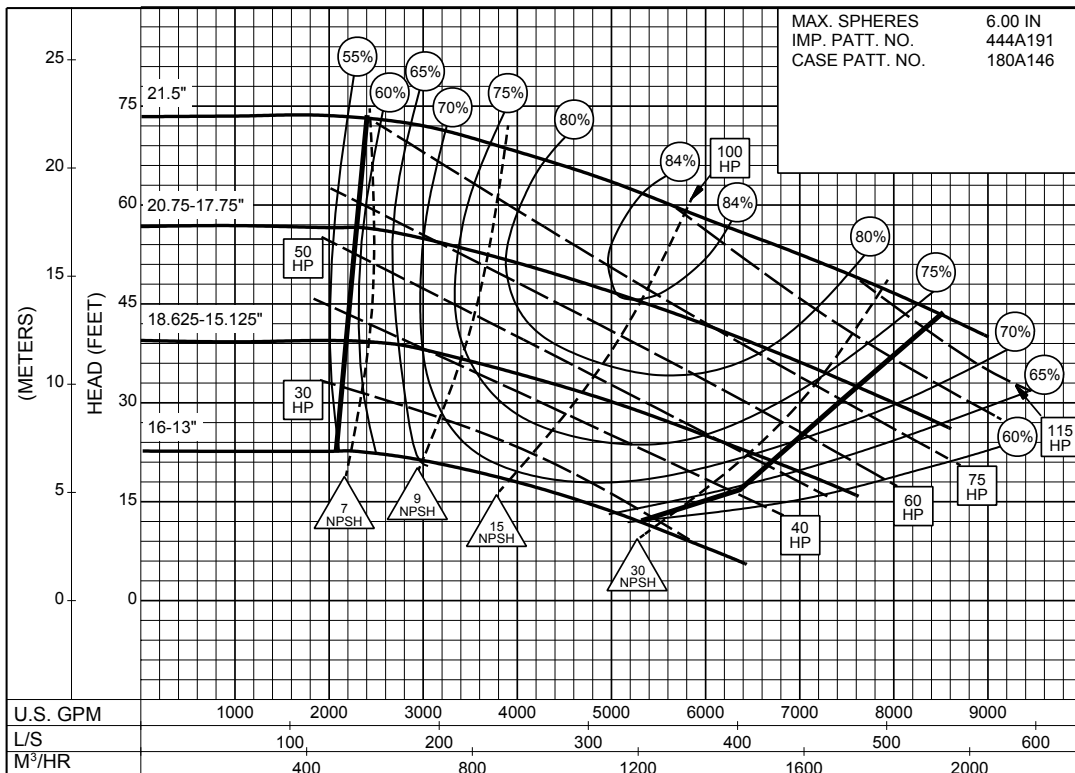
**SIZE : 12x14x22B      TYPE : 610      IMPELLER : Enclosed      R. P. M. : 875**



**8PC-132458**

**875  
RPM**

**SIZE : 12x14x22B      TYPE : 610      IMPELLER : Enclosed      R. P. M. : 700**



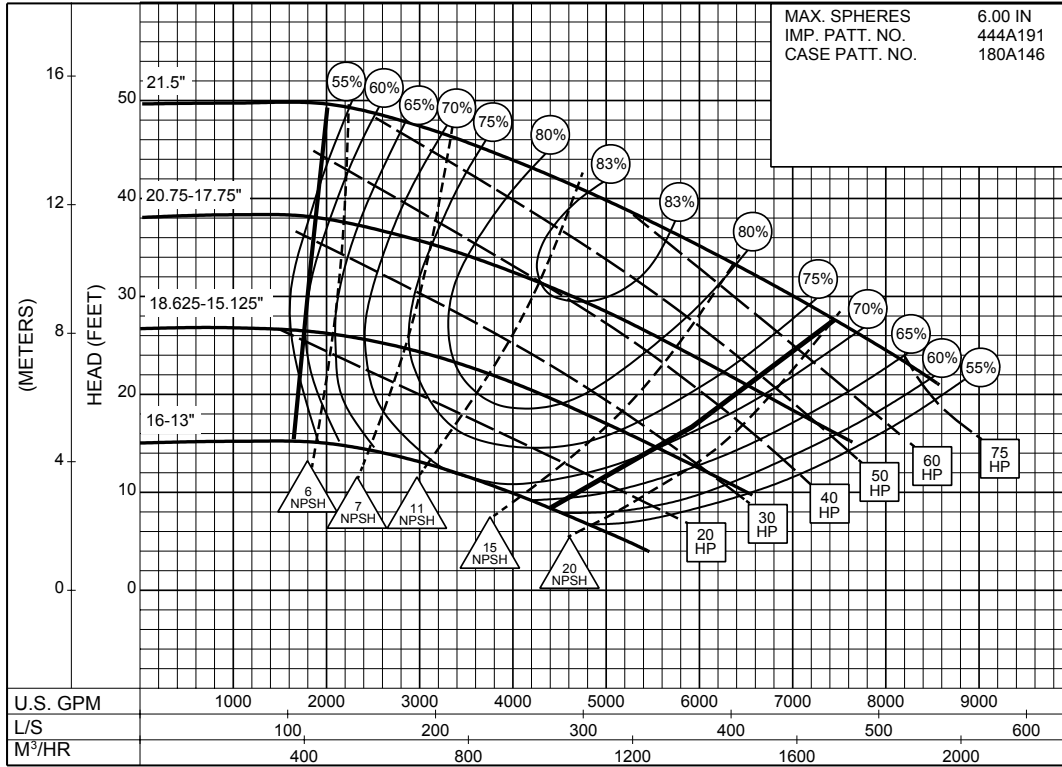
**8PC-132459**

**700  
RPM**

# 12 x 14 x 22B SERIES 610

ENCLOSED IMPELLER

SIZE : 12x14x22B      TYPE : 610      IMPELLER : Enclosed      R. P. M. : 580



**580**  
RPM

8PC-132460

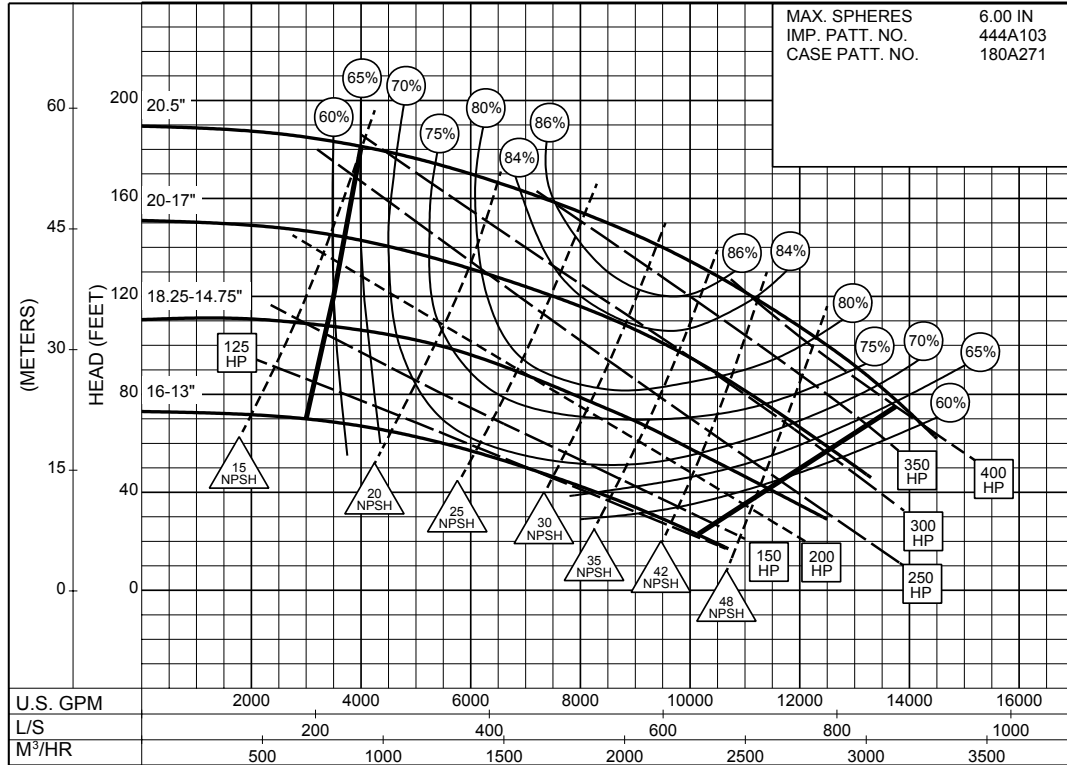
SIZE : 14x14x22A

TYPE : 610

IMPELLER : Enclosed

R. P. M. : 1175

MAX. SPHERES 6.00 IN  
IMP. PATT. NO. 444A103  
CASE PATT. NO. 180A271

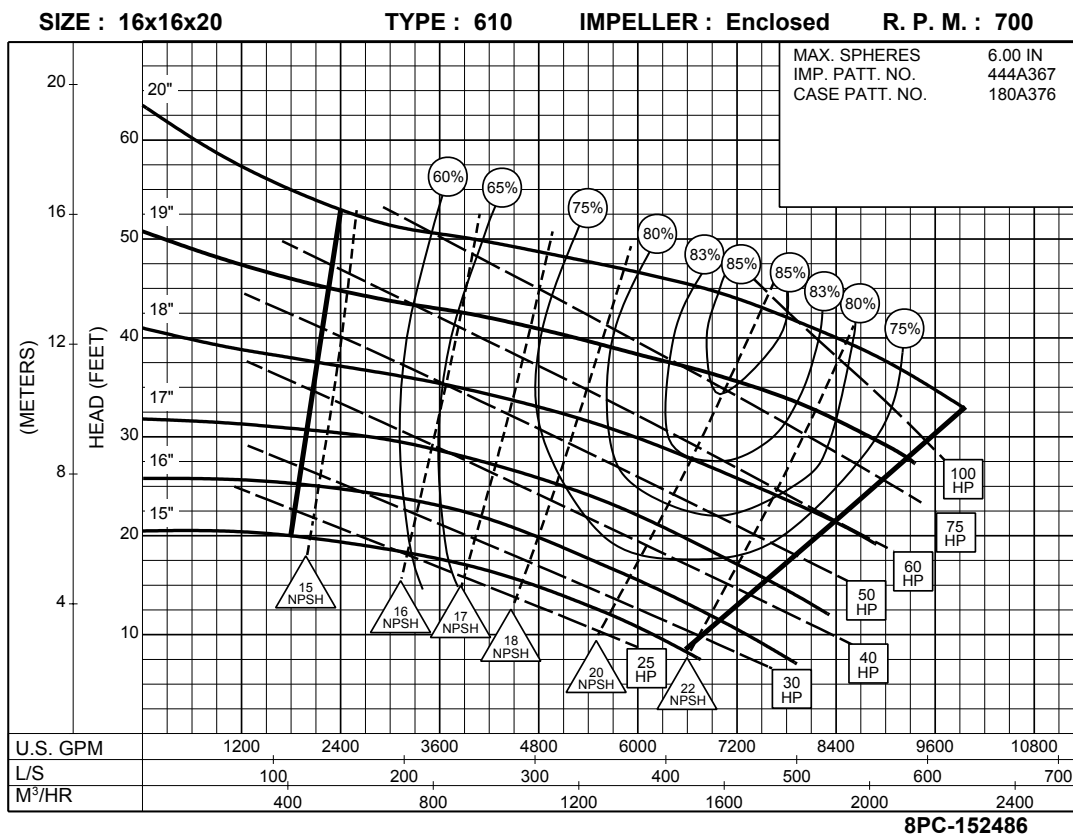
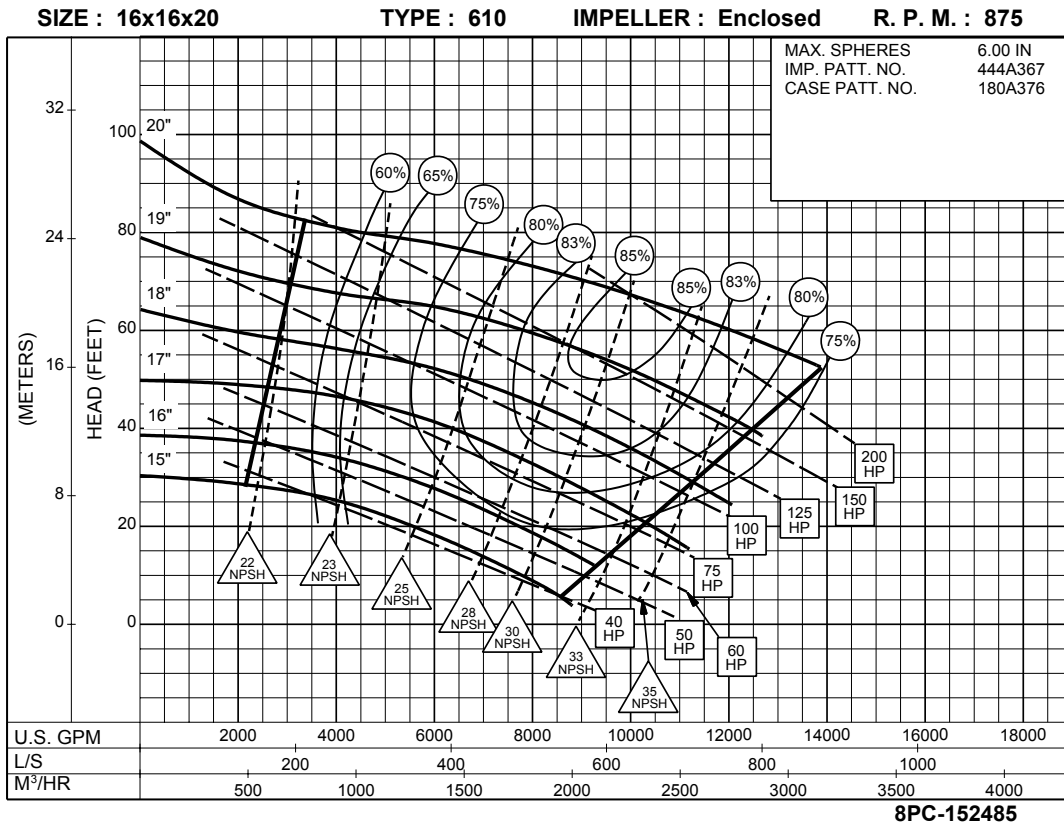


**1175**  
RPM

PC-150828

# 16 x 16 x 20 SERIES 610

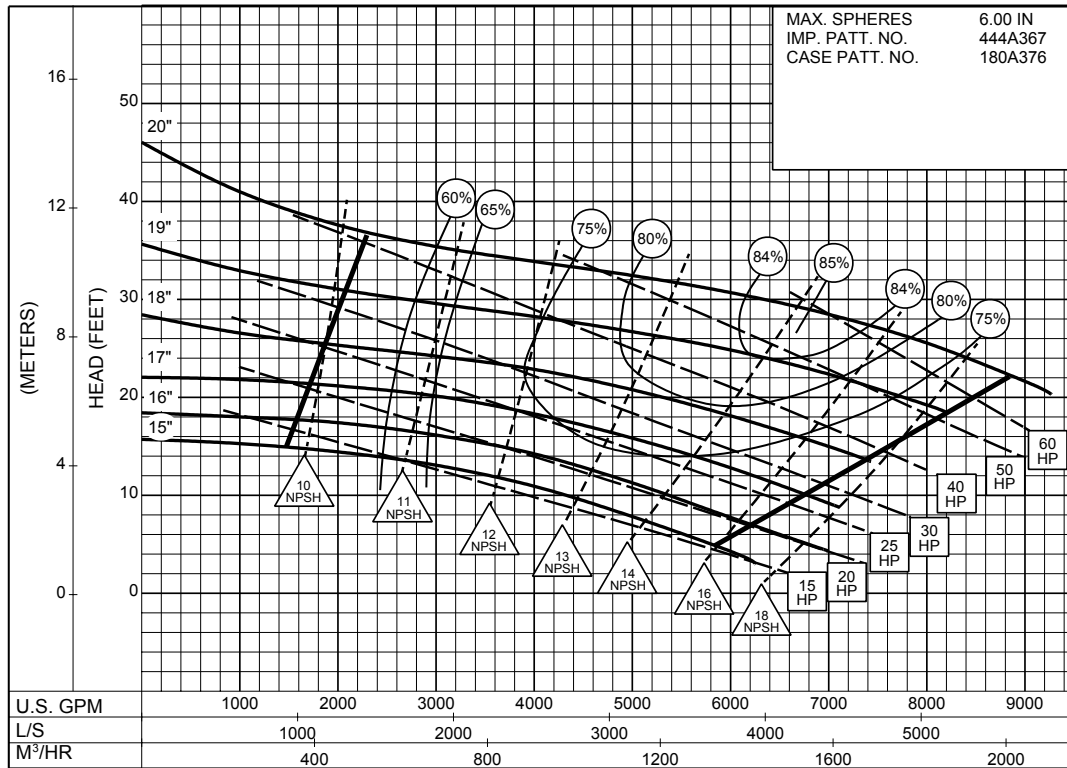
ENCLOSED IMPELLER



**16 x 16 x 20**  
**SERIES 610**

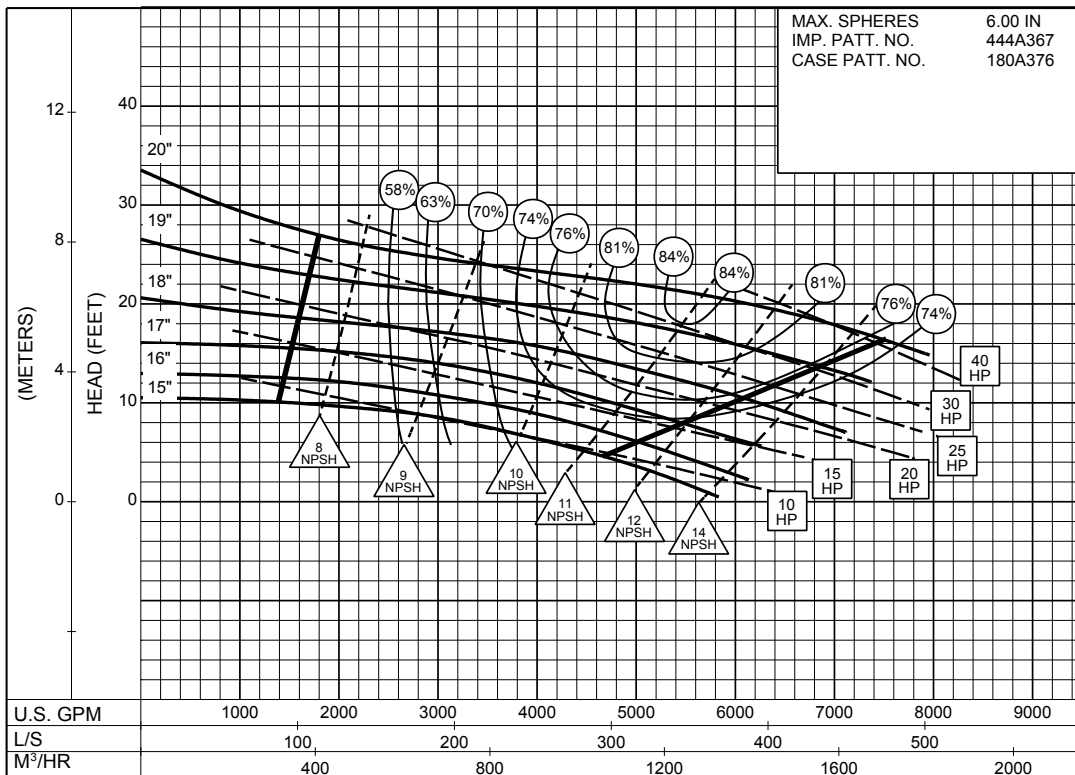
ENCLOSED IMPELLER

SIZE : 16x16x20 TYPE : 610 IMPELLER : Enclosed R. P. M. : 585



**585**  
RPM

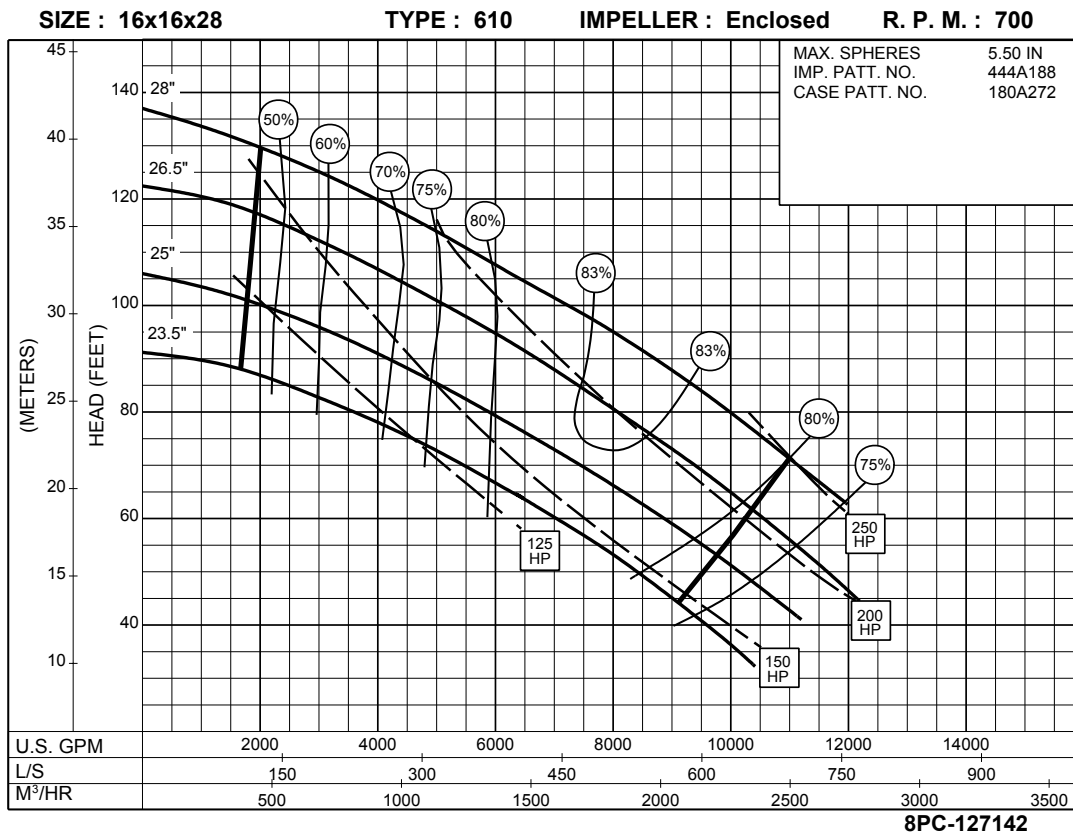
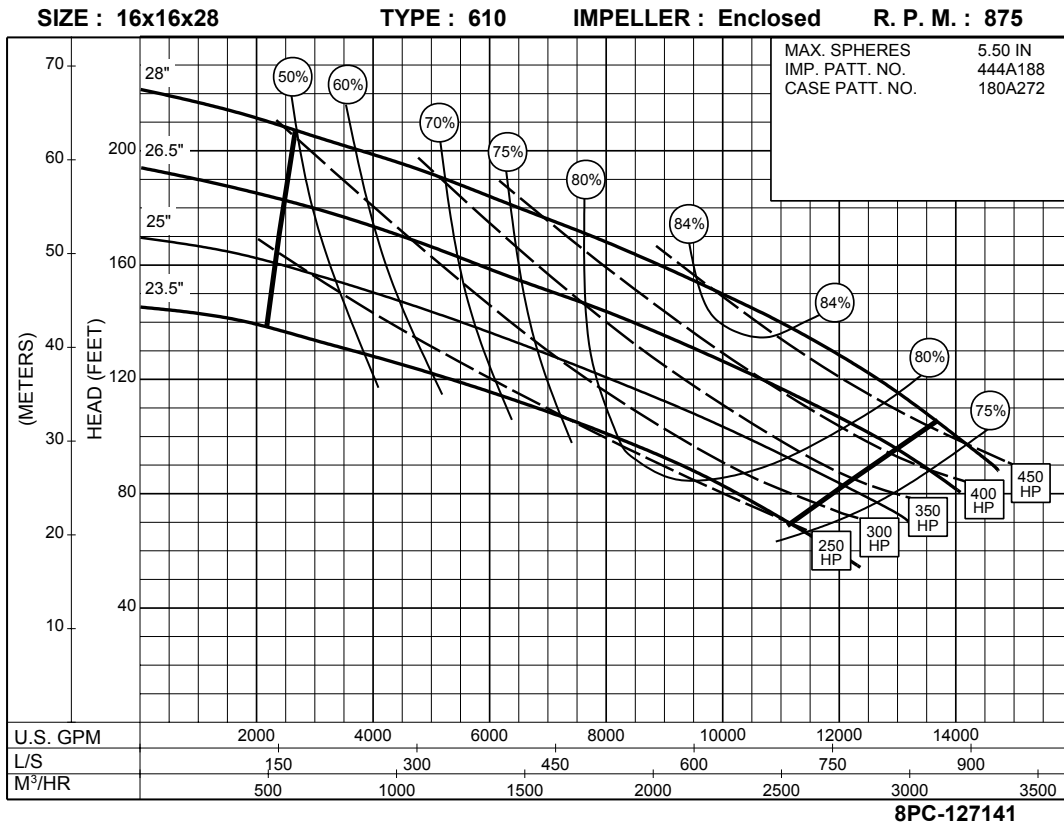
SIZE : 16x16x20 TYPE : 610 IMPELLER : Enclosed R. P. M. : 500



**500**  
RPM

# 16 x 16 x 28 SERIES 610

ENCLOSED IMPELLER



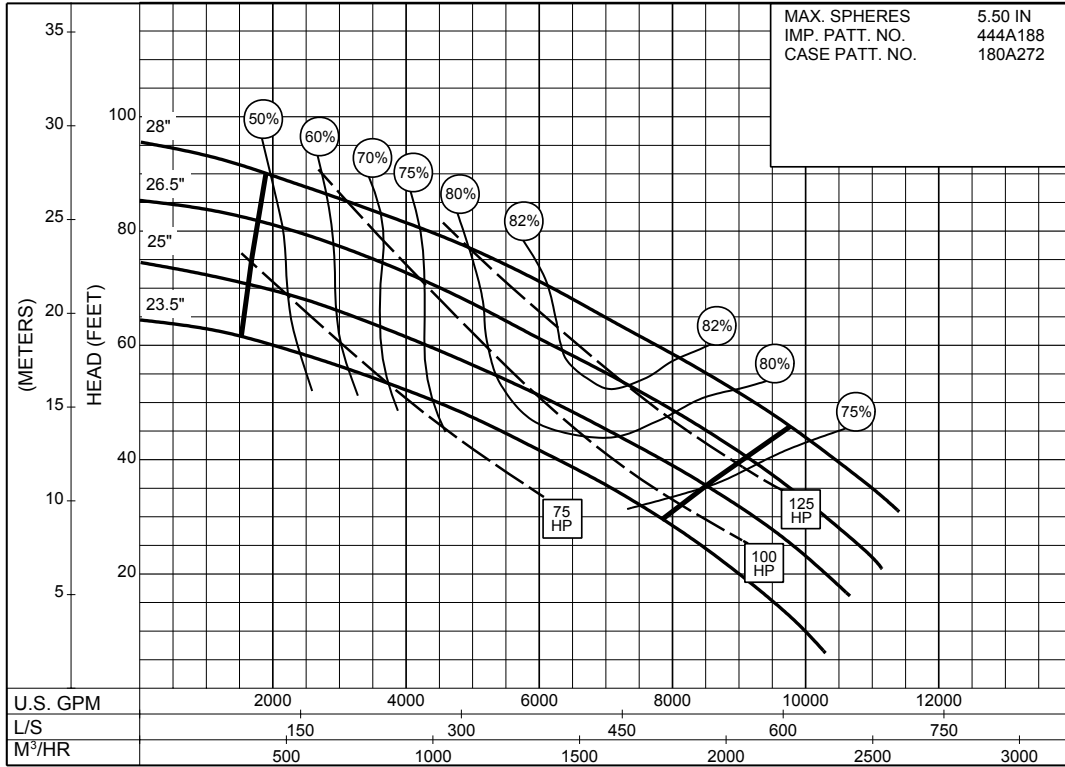
SIZE : 16x16x28

TYPE : 610

IMPELLER : Enclosed

R. P. M. : 585

MAX. SPHERES 5.50 IN  
IMP. PATT. NO. 444A188  
CASE PATT. NO. 180A272

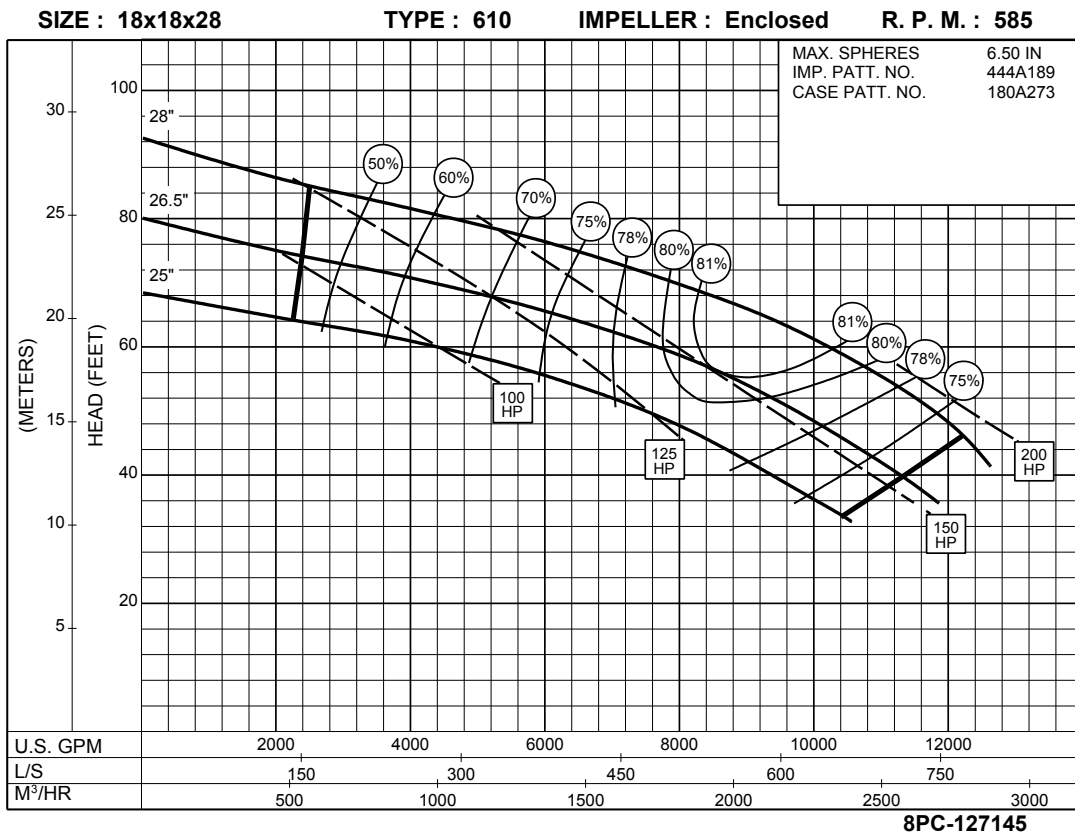
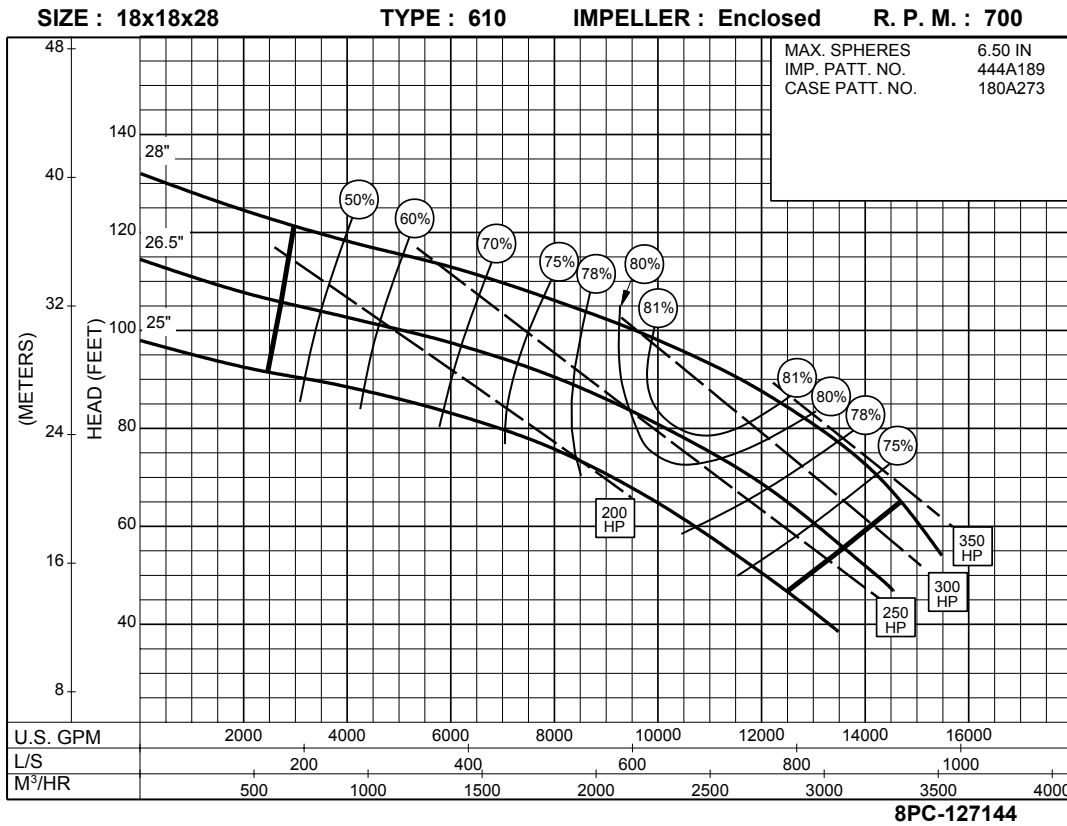


**585**  
RPM

8PC-127143

# 18 x 18 x 28 SERIES 610

ENCLOSED IMPELLER





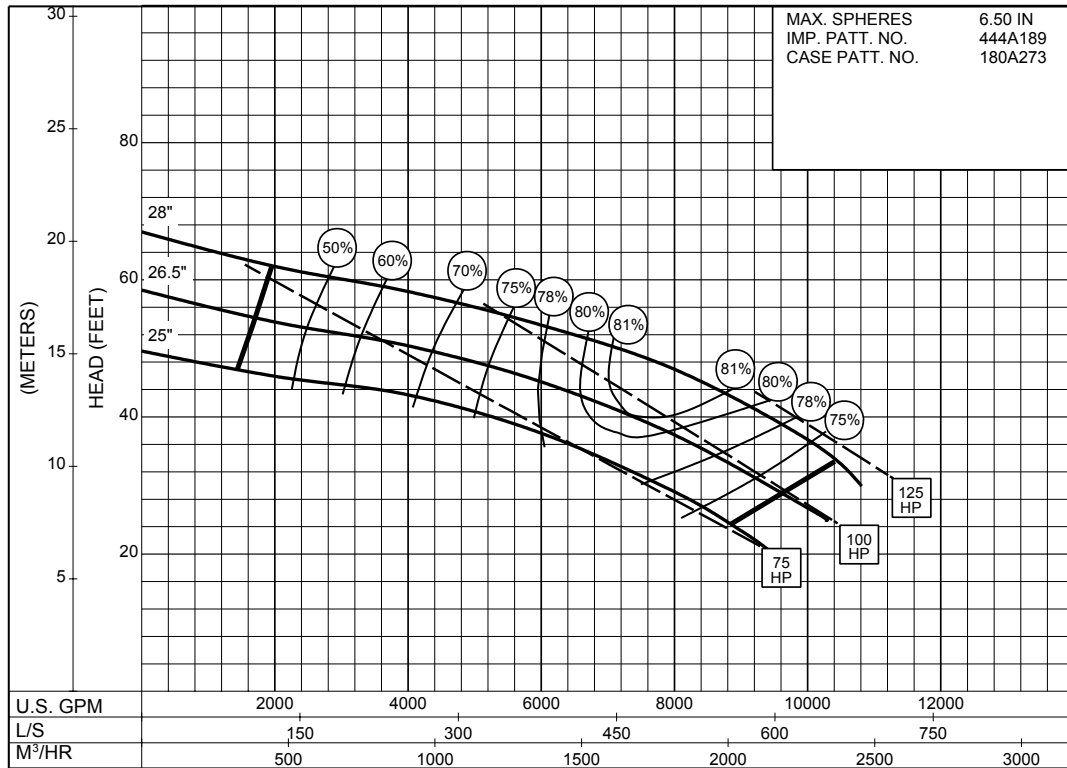
SIZE : 18x18x28

TYPE : 610

IMPELLER : Enclosed

R. P. M. : 500

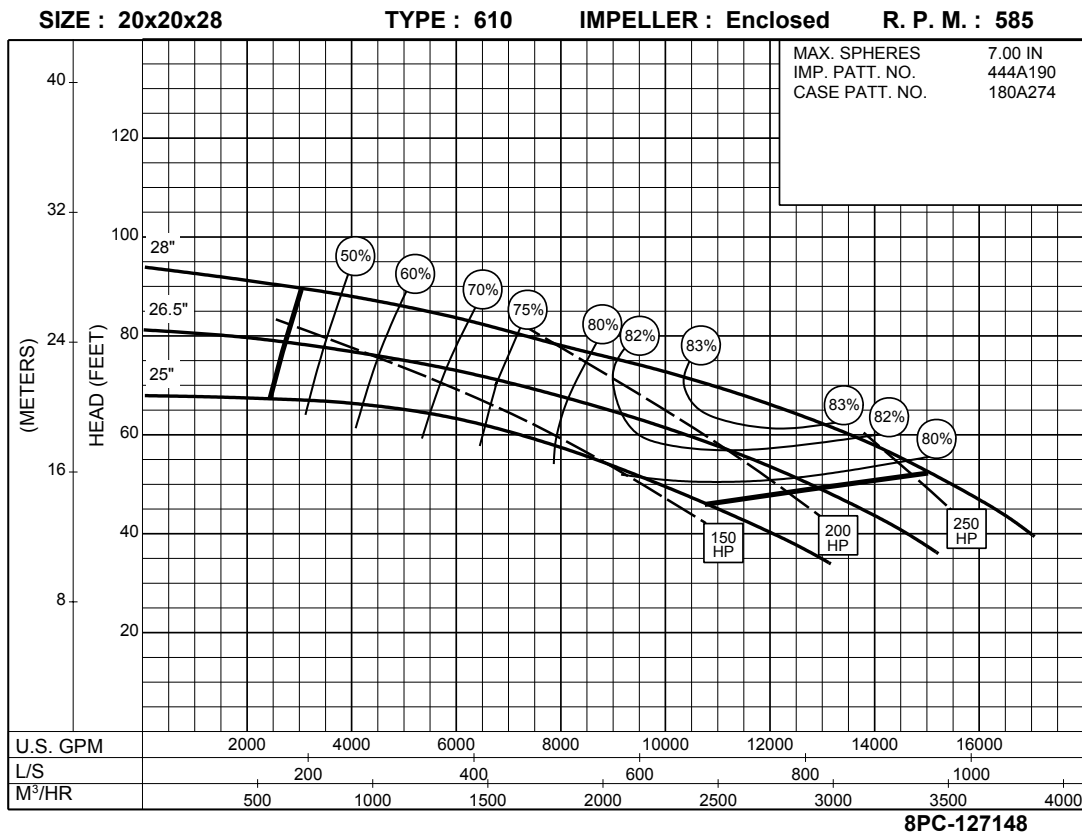
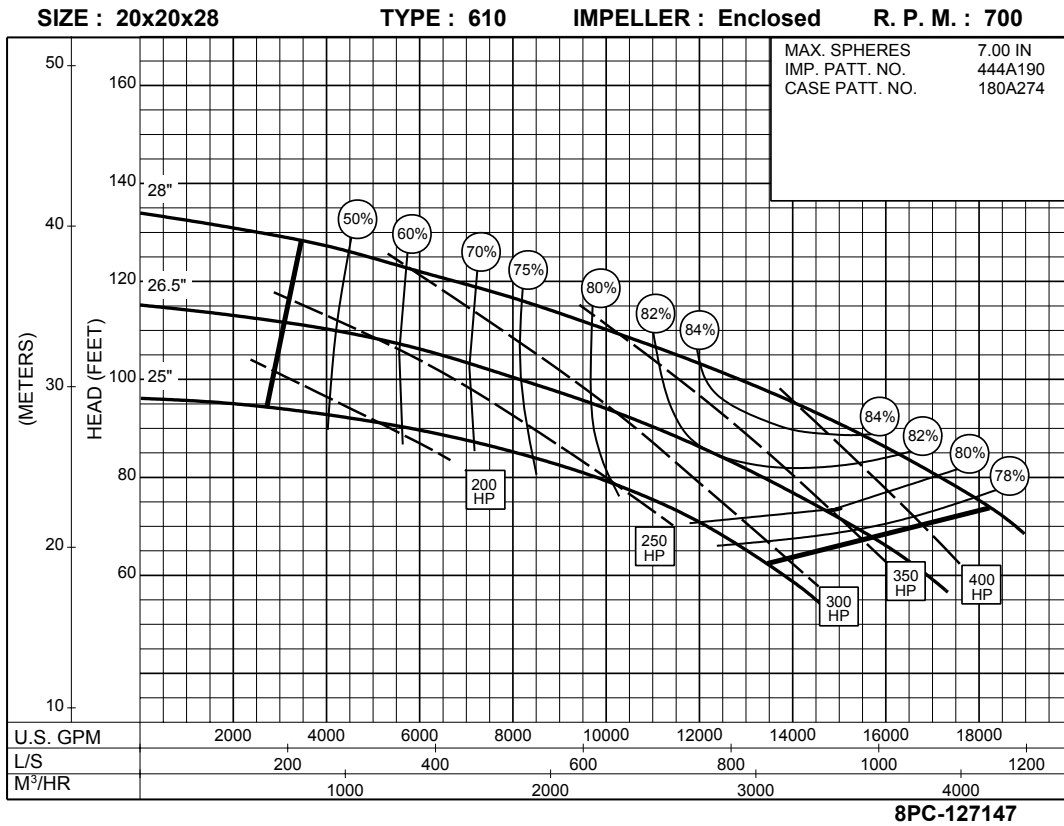
MAX. SPHERES 6.50 IN  
IMP. PATT. NO. 444A189  
CASE PATT. NO. 180A273



8PC-127146

# 20 x 20 x 28 SERIES 610

ENCLOSED IMPELLER



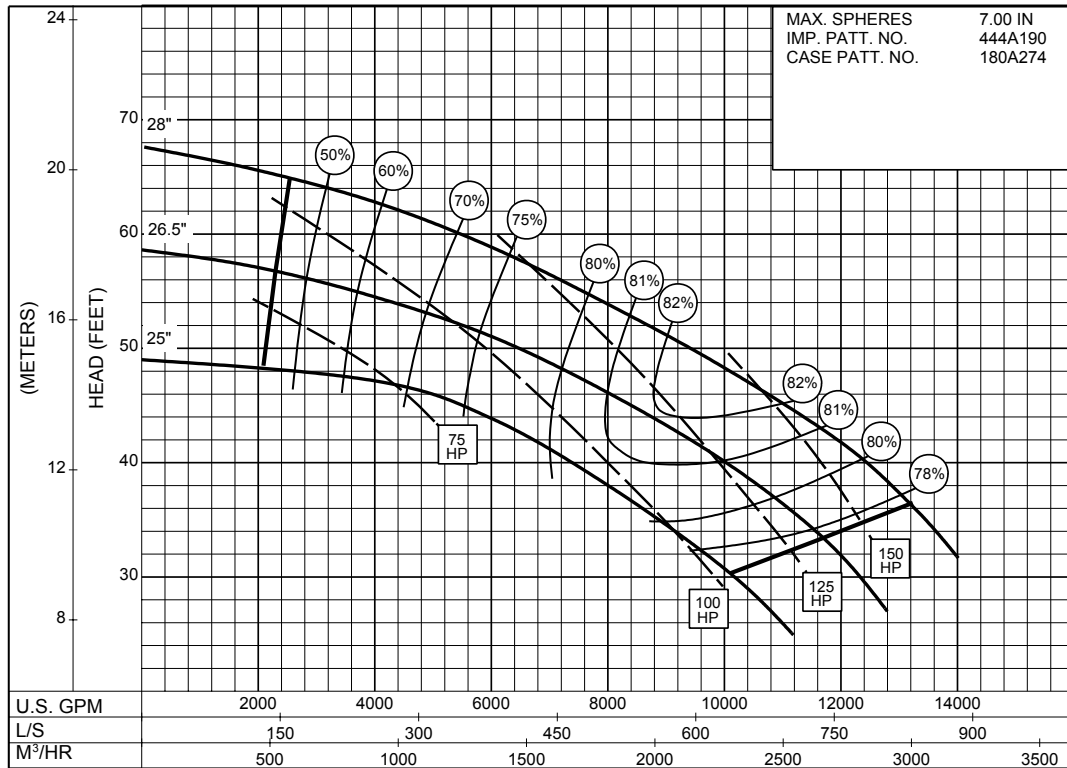
SIZE : 20x20x28

TYPE : 610

IMPELLER : Enclosed

R. P. M. : 500

MAX. SPHERES 7.00 IN  
IMP. PATT. NO. 444A190  
CASE PATT. NO. 180A274



**500**  
RPM

8PC-127149