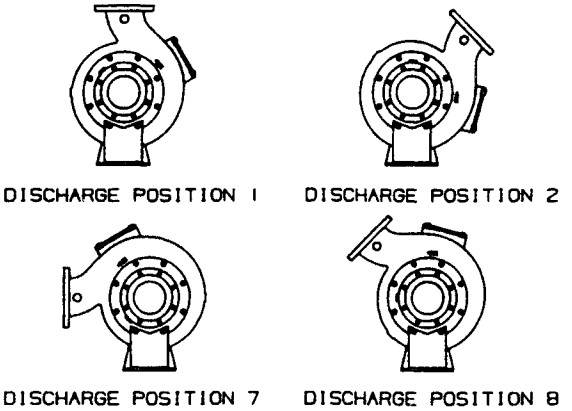
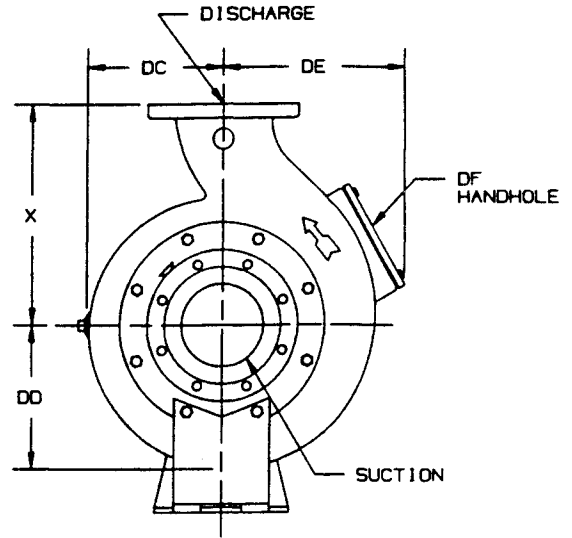
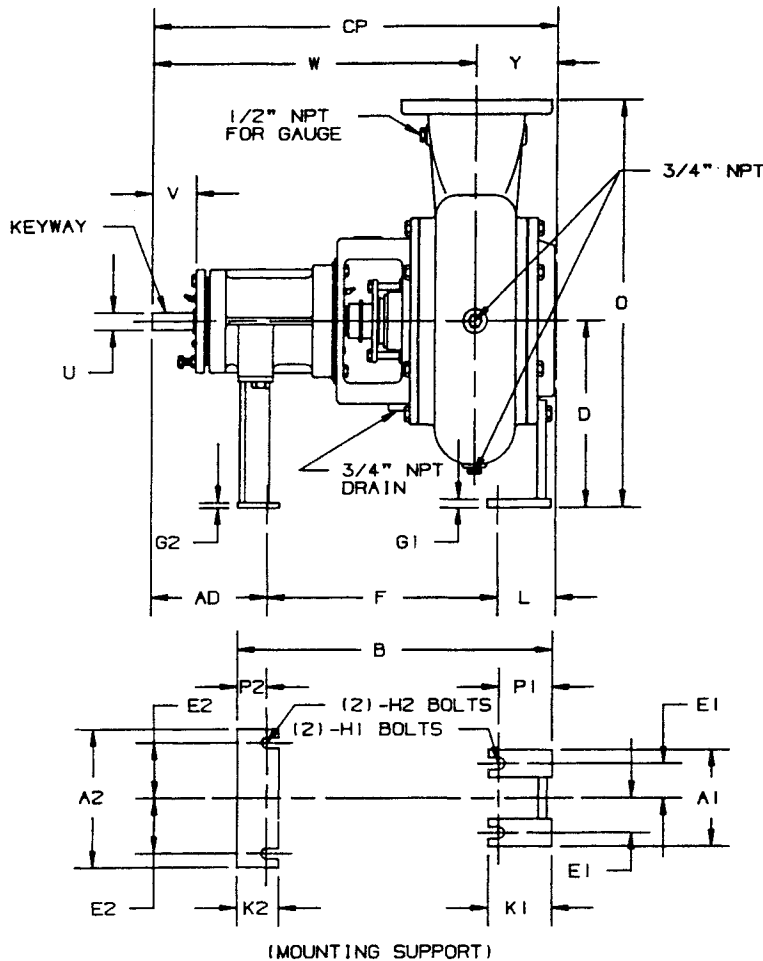


AURORA MODEL 611A PUMP 6" & 8" PUMPS

SECTION 610 PAGE 201
DATED OCTOBER 1992
SUPERSEDES PAGE 201
DATED NOVEMBER 1988



- NOTES:
1. ALL DIMENSIONS IN INCHES.
 2. DIMENSIONS MAY VARY $\pm 1/2"$.
 3. NOT FOR CONSTRUCTION PURPOSES UNLESS CERTIFIED.
 4. TWO (2) $1/2"$ NPT CONNECTIONS 180° APART, ON THE STUFFING BOX FOR LUBRICATION PURPOSES ARE FURNISHED AS STANDARD. ON PACKED PUMPS AN ALEMITE FITTING IS PROVIDED IN ONE TAP AND THE REMAINING TAP IS PLUGGED.
 5. DISCHARGE POSITION 1 IS FURNISHED AS STANDARD UNLESS SPECIFIED.
 6. SUCTION AND DISCHARGE FLANGES ARE AMERICAN STANDARD 125 LBS.

DISCHARGE POSITIONS AVAILABLE
(VIEWED FROM SUCTION END)

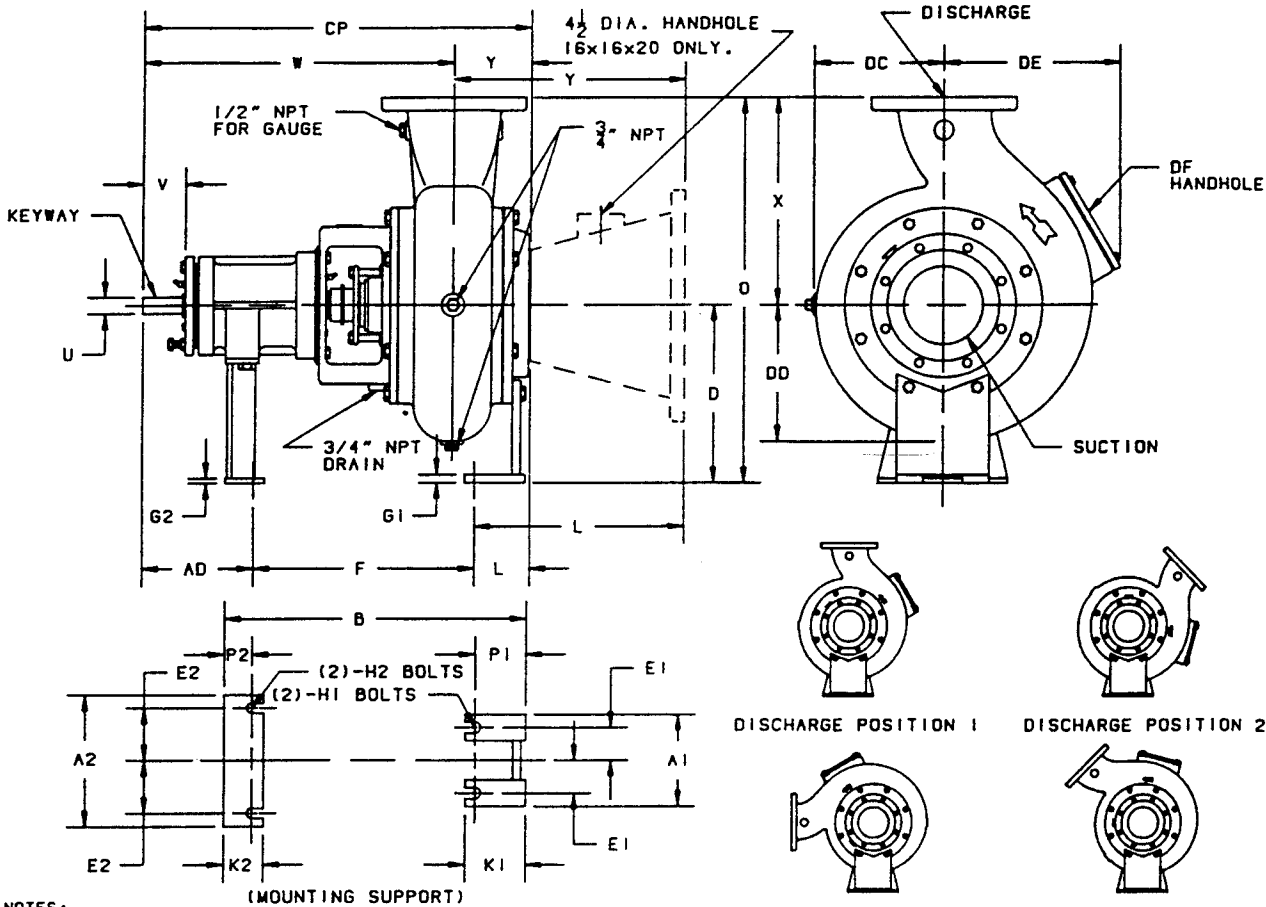
POWER FRAME	U	V	KEYWAY		
			LENGTH	WIDTH	DEPTH
4C, 4D	1 1/4	3 3/16	2	1/4	1/8
5E, 5F	2 3/8	6 3/8	4	5/8	5/16
5G, 5H					

DISCH SUCT CASE BORE	POWER FRAME	A1	A2	B	D	E1	E2	F	G1	G2	H1	H2	K1	K2
6x6x12	4C, 4D	7	10	22 7/8	13 1/2	2 1/2	4	16 7/8	5/8	3/8	5/8	5/8	4 5/8	3
6x6x12	5E, 5F	7	10	28 15/16	13 1/2	2 1/2	3 3/4	22 5/16	5/8	3/8	3/4	3/4	4 5/8	4
6x6x12B	4C, 4D	7	10	22 7/8	13 1/2	2 1/2	4	16 7/8	5/8	3/8	5/8	5/8	4 5/8	3
6x6x12B	5E, 5F	7	10	28 15/16	13 1/2	2 1/2	3 3/4	22 5/16	5/8	3/8	3/4	3/4	4 5/8	4
6x8x15	5E, 5F	11 1/2	11	29 1/8	15 1/4	4 1/4	4 1/4	20 7/8	5/8	3/8	7/8	7/8	7	3 1/2
6x8x18	5E, 5F	11 1/2	12 1/2	29 7/8	17 1/2	4 1/4	5	20 5/8	3/4	1/2	7/8	7/8	7	4 1/2
8x8x15A	5E	11 1/2	11	29 13/16	15 1/4	4 1/4	4 1/4	21 9/16	5/8	3/8	7/8	7/8	7	3 1/2
8x10x18	5G, 5H	11 1/2	12 1/2	31	17 1/2	4 1/4	6	21 3/4	3/4	1/2	7/8	7/8	7	4 1/2
8x10x22	5G, 5H	11	15	31 1/4	21	4	6 1/4	21 3/4	3/4	1/2	7/8	7/8	7 1/4	4 1/2

DISCH SUCT CASE BORE	POWER FRAME	L	O	P1	P2	W	X	Y	AD	CP	DC	DD	DE	DF
6x6x12	4C, 4D	4 1/4	27 1/2	3 7/8	2 1/8	23 5/16	14	6 3/16	8 3/8	29 1/2	9 1/2	10 1/2	13 7/8	5x5
6x6x12	5E, 5F	4 1/4	27 1/2	3 7/8	2 3/4	34 3/16	14	6 3/16	13 13/16	40 3/8	9 1/2	10 1/2	13 7/8	5x5
6x6x12B	4C, 4D	4 1/4	29 1/2	3 7/8	2 1/8	23 7/16	16	6 1/16	8 3/8	29 1/2	10 3/8	11 1/16	13 7/8	5x5
6x6x12B	5E, 5F	4 1/4	29 1/2	3 7/8	2 3/4	34 5/16	16	6 1/16	13 13/16	40 3/8	10 3/8	11 1/16	13 7/8	5x5
6x8x15	5E, 5F	5 3/4	31 1/4	6	2 1/4	33 3/4	16	6 1/8	13 1/4	39 7/8	11 3/8	12 1/2	15 3/8	5x5
6x8x18	5E, 5F	5 3/4	35 1/2	6	3 1/4	34 1/16	18	6 7/16	14 1/8	40 1/2	13	14 3/8	16 7/8	5x5
8x8x15A	5E	8 7/16	34 1/4	6	2 1/4	34 1/8	19	9 1/8	13 1/4	43 1/4	12 5/8	13 1/2	15 3/4	5x7
8x10x18	5G, 5H	5 1/2	36 1/2	6	3 1/4	34 5/8	19	6 3/4	14 1/8	41 3/8	12 7/8	14 9/16	16	5x7
8x10x22	5G, 5H	5 5/8	43	6 1/4	3 1/4	34 5/8	22	6 7/8	14 1/8	41 1/2	14 7/8	16 1/2	17 7/8	5x7

AURORA MODEL 611A PUMP

10" - 12" - 14" - 16" PUMPS



- NOTES:
1. ALL DIMENSIONS IN INCHES.
 2. DIMENSIONS MAY VARY $\pm 1/2"$.
 3. NOT FOR CONSTRUCTION PURPOSES UNLESS CERTIFIED.
 4. TWO (2) 1/2" NPT CONNECTIONS 180° APART, ON THE STUFFING BOX FOR LUBRICATION PURPOSES ARE FURNISHED AS STANDARD. ON PACKED PUMPS AN ALEMITE FITTING IS PROVIDED IN ONE TAP AND THE REMAINING TAP IS PLUGGED.
 5. DISCHARGE POSITION 1 IS FURNISHED AS STANDARD UNLESS SPECIFIED.
 6. SUCTION AND DISCHARGE FLANGES ARE AMERICAN STANDARD 125 LBS.

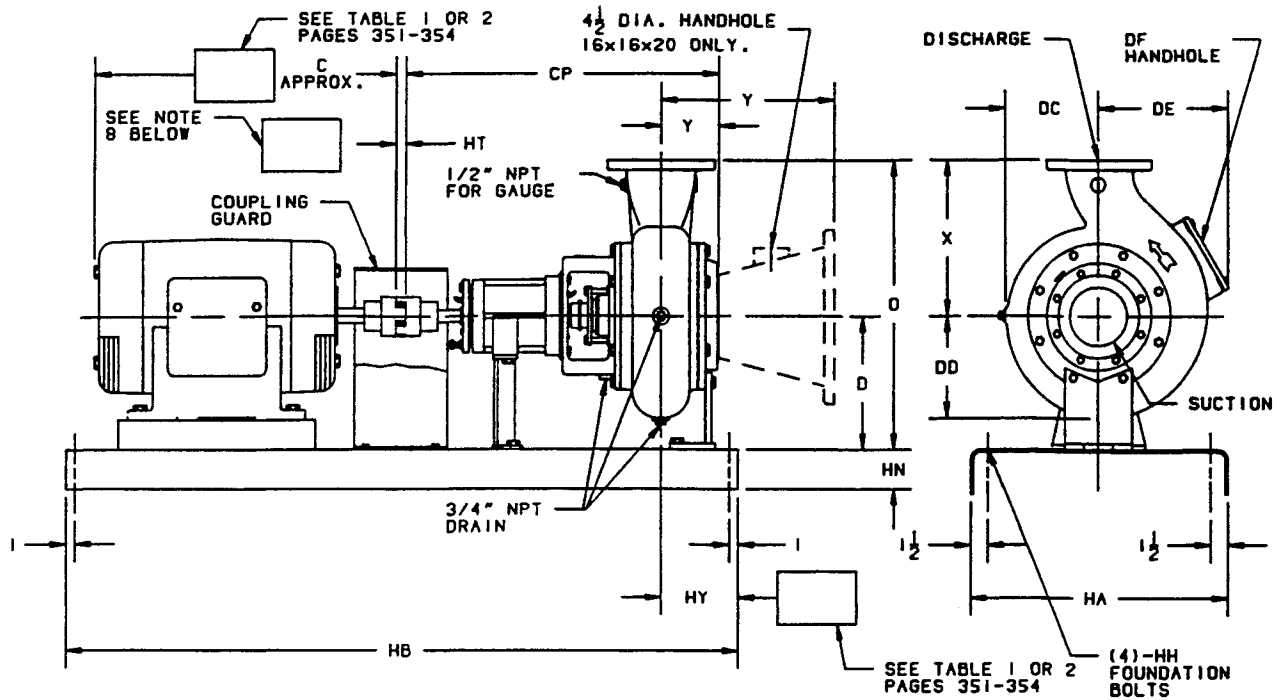
POWER FRAME	U	V	KEYWAY		
			LENGTH	WIDTH	DEPTH
5E, 5F	2 3/8	6 3/8	4	5/8	5/16
5G, 5H					
6D, 6F	2 7/8	6 5/8	5	3/4	3/8
6E	2 7/8	5 3/4	4	3/4	3/8

DISCH SUCT CASE BORE	POWER FRAME	A1	A2	B	D	E1	E2	F	G1	G2	H1	H2	K1	K2
10x10x15	5E, 5F	11 1/2	11	31	15 1/4	4 1/4	4 1/4	22 3/4	5/8	3/8	7/8	7/8	7	3 1/2
10x10x22	6E	11	15	33 3/4	21	4	6 1/4	24 1/8	3/4	1/2	7/8	7/8	7 1/4	4 1/2
10x12x22	5G, 5H	11	15	32 5/16	21	4	6 1/4	22 3/4	3/4	1/2	7/8	7/8	7 1/4	4 1/2
10x12x22	6D	11	15	34 13/16	21	4	6 1/4	25 1/8	3/4	1/2	7/8	7/8	7 1/4	4 1/2
12x12x22	6E	11	15	34 1/4	21	4	6 1/4	25 1/4	3/4	1/2	7/8	7/8	7 1/4	4 1/2
12x14x22A	5G, 5H	11	15	32 3/8	21	4	6 1/4	22 7/8	3/4	1/2	7/8	7/8	7 1/4	4 1/2
12x14x22A	6D	11	15	34 1/4	21	4	6 1/4	25 1/4	3/4	1/2	7/8	7/8	7 1/4	4 1/2
12x14x22B	5G, 5H	11	15	32 3/8	21	4	6 1/4	22 7/8	3/4	1/2	7/8	7/8	7 1/4	4 1/2
12x14x22B	6D	11	15	34 1/4	21	4	6 1/4	25 1/4	3/4	1/2	7/8	7/8	7 1/4	4 1/2
14x14x22A	6E	11	15	34 1/4	21	4	6 1/4	25 1/4	3/4	1/2	7/8	7/8	7 1/4	4 1/2
16x16x20	6F	11	15	39	24	4	6 1/4	29 1/2	3/4	1/2	7/8	7/8	7 1/4	4 1/2

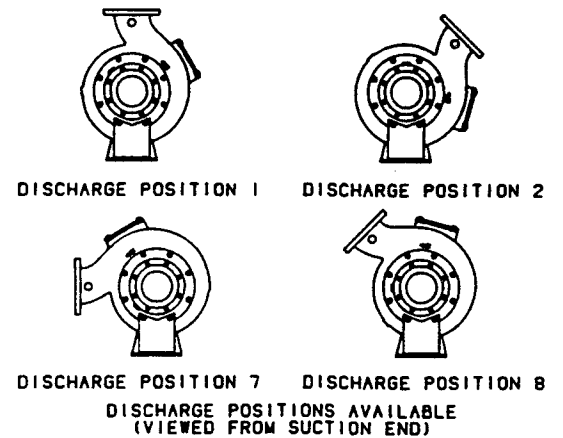
DISCH SUCT CASE BORE	POWER FRAME	L	O	P1	P2	W	X	Y	AD	CP	DC	DD	DE	DF
10x10x15	5E, 5F	8 7/8	35 1/4	6	2 1/4	34 13/16	20	10 1/16	13 1/4	44 7/8	11 5/8	13 5/8	17 1/2	5x7
10x10x22	6E	5 5/8	43	6 1/4	3 1/4	37 1/8	22	6 7/8	14 1/4	44	15	16 1/2	18 1/2	5x7
10x12x22	5G, 5H	5 3/8	43 1/2	6 1/4	3 1/4	35 1/16	22 1/2	7 3/16	14 1/8	42 1/4	15 1/2	17 7/8	20 1/8	5x7
10x12x22	6D	5 3/8	43 1/2	6 1/4	3 1/4	37 9/16	22 1/2	7 3/16	14 1/4	44 3/4	15 1/2	17 7/8	20 1/8	5x7
12x12x22	6E	5 3/8	43 1/2	6 1/4	3 1/4	37 5/8	22 1/2	7 1/4	14 1/4	44 7/8	15 5/8	17 3/4	21	5x7
12x14x22A	5G, 5H	5 3/8	45	6 1/4	3 1/4	35 1/8	24	7 1/4	14 1/8	42 3/8	15 7/8	18 3/4	22 1/4	5x7
12x14x22A	6D	5 3/8	45	6 1/4	3 1/4	37 5/8	24	7 1/4	14 1/4	44 7/8	15 7/8	18 3/4	22 1/4	5x7
12x14x22B	5G, 5H	5 3/8	45	6 1/4	3 1/4	35 1/8	24	7 1/4	14 1/8	42 3/8	15 7/8	18 3/4	22 1/4	5x7
12x14x22B	6D	5 3/8	45	6 1/4	3 1/4	37 5/8	24	7 1/4	14 1/4	44 7/8	15 7/8	18 3/4	22 1/4	5x7
14x14x22A	6E	5 3/8	45	6 1/4	3 1/4	37 5/8	24	7 1/4	14 1/4	44 7/8	15 7/8	18 3/4	22 1/4	5x7
16x16x20	6F	19 1/2	56	6 1/4	3 1/4	39 7/8	32	23 1/2	14 1/8	63 3/8	17 3/4	20 1/2	24	6 DIA

AURORA MODEL 611A PUMP FORMED STEEL BASE

SECTION 610 PAGE 251
DATED **OCTOBER 1992**
SUPERSEDES PAGE 251
DATED NOVEMBER 1988

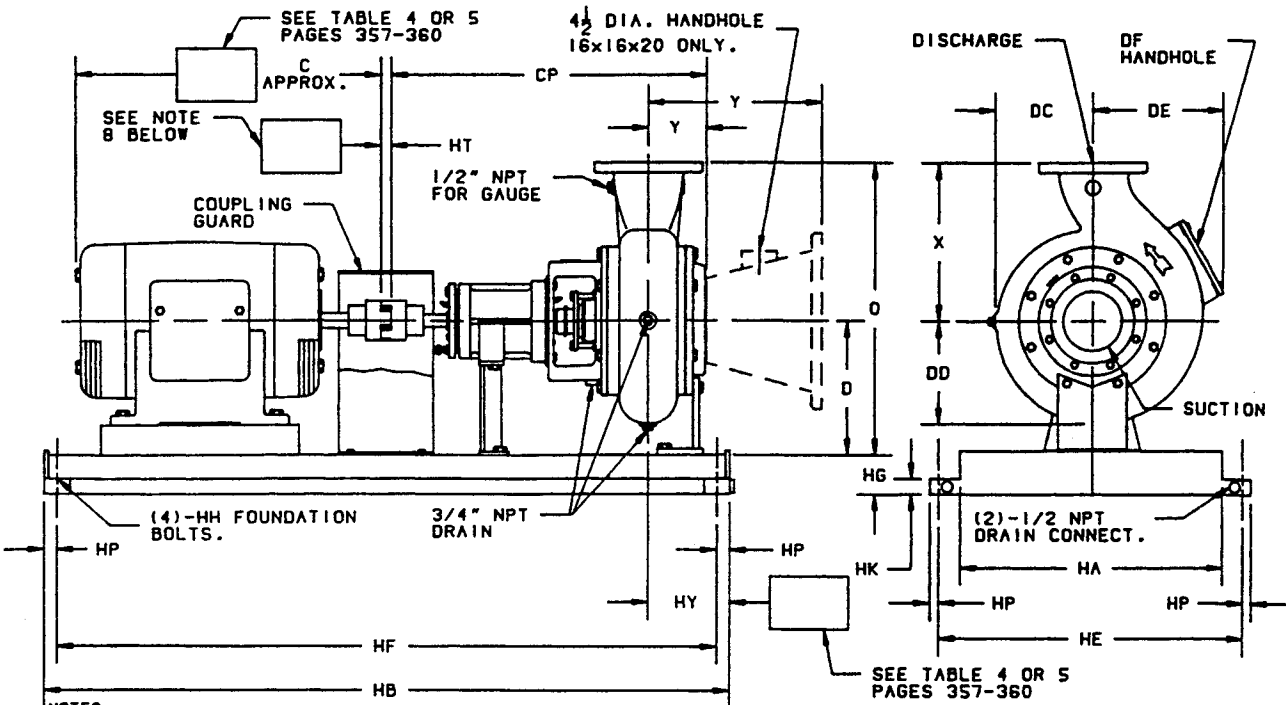


- NOTES:**
1. ALL DIMENSIONS IN INCHES.
 2. DIMENSIONS MAY VARY $\pm 1/2"$.
 3. NOT FOR CONSTRUCTION PURPOSES UNLESS CERTIFIED.
 4. TWO (2) 1/2" NPT CONNECTIONS 180° APART, ON THE STUFFING BOX FOR LUBRICATION PURPOSES ARE FURNISHED AS STANDARD. ON PACKED PUMPS AN ALEMITE FITTING IS PROVIDED IN ONE TAP AND THE REMAINING TAP IS PLUGGED.
 5. DISCHARGE POSITION 1 IS FURNISHED AS STANDARD UNLESS SPECIFIED.
 6. SUCTION AND DISCHARGE FLANGES ARE AMERICAN STANDARD 125 LBS.
 7. CONDUIT BOX IS SHOWN IS APPROXIMATE LOCATION. DIMENSIONS ARE NOT SPECIFIED AS THEY MAY VARY WITH EACH MOTOR MANUFACTURER.
 8. STANDARD COUPLING ILLUSTRATED. "HT" DIMENSION, "I" MAXIMUM. FOR SPACER COUPLING SIZE AND "HT" DIMENSION REFER TO PAGES 355-356 (TABLE 3).



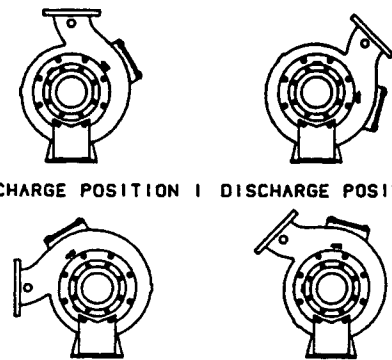
DISCH SUCTION CASE BORE	POWER FRAME	D	O	X	Y	CP	DC	DD	DE	DF	BASE HA	HB	HN	HN
6x6x12	4C, 4D	13 1/2	27 1/2	14	6 3/16	29 1/2	9 1/2	10 1/2	13 7/8	5x5	3 15	54	5/8	3 3/8
6x6x12	5E, 5F	13 1/2	27 1/2	14	6 3/16	40 3/8	9 1/2	10 1/2	13 7/8	5x5	4 15	60	5/8	3 3/8
6x6x12B	4C, 4D	13 1/2	29 1/2	16	6 1/16	29 1/2	10 3/8	11 1/16	13 7/8	5x5	5 15	64	5/8	3 3/8
6x6x12B	5E, 5F	13 1/2	29 1/2	16	6 1/16	40 3/8	10 3/8	11 1/16	13 7/8	5x5	6 15	70	5/8	3 3/8
6x8x15	5E, 5F	15 1/4	31 1/4	16	6 1/8	39 7/8	11 3/8	12 1/2	15 3/8	5x5	8 18	68	5/8	4
6x8x18	5E, 5F	17 1/2	35 1/2	18	6 7/16	40 1/2	13	14 3/8	16 7/8	5x5	9 18	76	5/8	4
8x8x15A	5E	15 1/4	34 1/4	19	9 1/8	43 1/4	12 5/8	13 1/2	15 3/4	5x7	10 18	84	5/8	4
8x10x18	5G, 5H	17 1/2	36 1/2	19	6 3/4	41 3/8	12 7/8	14 9/16	16	5x7	16 22	72	5/8	4
8x10x22	5G, 5H	21	43	22	6 7/8	41 1/2	14 7/8	16 1/2	17 7/8	5x7	17 22	84	5/8	4
10x10x15	5E, 5F	15 1/4	35 1/4	20	10 1/16	44 7/8	11 5/8	13 5/8	17 1/2	5x7	18 22	96	5/8	4
10x10x22	6E	21	43	22	6 7/8	44	15	16 1/2	18 1/2	5x7				
10x12x22	5G, 5H	21	43 1/2	22 1/2	7 3/16	42 1/4	15 1/2	17 7/8	20 1/8	5x7				
10x12x22	6D	21	43 1/2	22 1/2	7 3/16	44 3/4	15 1/2	17 7/8	20 1/8	5x7				
12x12x22	6E	21	43 1/2	22 1/2	7 1/4	44 7/8	15 5/8	17 3/4	21	5x7				
12x14x22A	5G, 5H	21	45	24	7 1/4	42 3/8	15 7/8	18 3/4	22 1/4	5x7				
12x14x22A	6D	21	45	24	7 1/4	44 7/8	15 7/8	18 3/4	22 1/4	5x7				
12x14x22B	5G, 5H	21	45	24	7 1/4	42 3/8	15 7/8	18 3/4	22 1/4	5x7				
12x14x22B	6D	21	45	24	7 1/4	44 7/8	15 7/8	18 3/4	22 1/4	5x7				
14x14x22A	6E	21	45	24	7 1/4	44 7/8	15 7/8	18 3/4	22 1/4	5x7				
16x16x20	6F	24	56	32	23 1/2	63 3/8	17 3/4	20 1/2	24	6 DIA				

AURORA MODEL 611A PUMP STEEL DRIP RIM BASE



- NOTES:
1. ALL DIMENSIONS IN INCHES.
 2. DIMENSIONS MAY VARY $\pm 1/2"$.
 3. NOT FOR CONSTRUCTION PURPOSES UNLESS CERTIFIED.
 4. TWO (2) $1/2"$ NPT CONNECTIONS 180° APART, ON THE STUFFING BOX FOR LUBRICATION PURPOSES ARE FURNISHED AS STANDARD. ON PACKED PUMPS AN ALEMITE FITTING IS PROVIDED IN ONE TAP AND THE REMAINING TAP IS PLUGGED.
 5. DISCHARGE POSITION 1 IS FURNISHED AS STANDARD UNLESS SPECIFIED.
 6. SUCTION AND DISCHARGE FLANGES ARE AMERICAN STANDARD 125 LBS.
 7. CONDUIT BOX IS SHOWN IS APPROXIMATE LOCATION. DIMENSIONS ARE NOT SPECIFIED AS THEY MAY VARY WITH EACH MOTOR MANUFACTURER.
 8. STANDARD COUPLING ILLUSTRATED. "HT" DIMENSION 1" MAXIMUM. FOR SPACER COUPLING SIZE AND "HT" DIMENSION REFER TO PAGES 355-356 (TABLE 3).
 9. 3 GROUT HOLES ARE PROVIDED IN TOP OF BASE.

SEE TABLE 4 OR 5
 PAGES 357-360



DISCHARGE POSITION 1 DISCHARGE POSITION 2
 DISCHARGE POSITION 7 DISCHARGE POSITION 8
 DISCHARGE POSITIONS AVAILABLE
 (VIEWED FROM SUCTION END)

BASE	SIZE	HA	HB	HE	HF	HG	HH	HK	HP
10	14x56	14	56 1/2	19	55	3	5/8	1 1/2	3/4
13	18x64	18	64 1/2	25 1/8	62 7/8	4	3/4	2	13/16
14	18x72	18	72 1/2	25 1/8	70 7/8	4	3/4	2	13/16
17	22x74	22	74 1/2	29 1/8	72 7/8	4 1/2	3/4	2	13/16
18	22x82	22	82 1/2	29 1/8	80 7/8	4 1/2	3/4	2	13/16
19	22x90	22	90 1/2	29 1/8	88 7/8	4 1/2	3/4	2	13/16
21	30x110	30	110 1/2	37 1/8	108 7/8	4 1/2	3/4	2	13/16

DISCH SUCT CASE BORE	POWER FRAME	D	O	X	Y	CP	DC	DD	DE	DF
6x6x12	4C,4D	13 1/2	27 1/2	14	6 3/16	29 1/2	9 1/2	10 1/2	13 7/8	5x5
6x6x12	5E,5F	13 1/2	27 1/2	14	6 3/16	40 3/8	9 1/2	10 1/2	13 7/8	5x5
6x6x12B	4C,4D	13 1/2	29 1/2	16	6 1/16	29 1/2	10 3/8	11 1/16	13 7/8	5x5
6x6x12B	5E,5F	13 1/2	29 1/2	16	6 1/16	40 3/8	10 3/8	11 1/16	13 7/8	5x5
6x8x15	5E,5F	15 1/4	31 1/4	16	6 1/8	39 7/8	11 3/8	12 1/2	15 3/8	5x5
6x8x18	5E,5F	17 1/2	35 1/2	18	6 7/16	40 1/2	13	14 3/8	16 7/8	5x5
8x8x15A	5E	15 1/4	34 1/4	19	9 1/8	43 1/4	12 5/8	13 1/2	15 3/4	5x7
8x10x18	5G,5H	17 1/2	36 1/2	19	6 3/4	41 3/8	12 7/8	14 9/16	16	5x7
8x10x22	5G,5H	21	43	22	6 7/8	41 1/2	14 7/8	16 1/2	17 7/8	5x7
10x10x15	5E,5F	15 1/4	35 1/4	20	10 1/16	44 7/8	11 5/8	13 5/8	17 1/2	5x7
10x10x22	6E	21	43	22	6 7/8	44	15	16 1/2	18 1/2	5x7
10x12x22	5G,5H	21	43 1/2	22 1/2	7 3/16	42 1/4	15 1/2	17 7/8	20 1/8	5x7
10x12x22	6D	21	43 1/2	22 1/2	7 3/16	44 3/4	15 1/2	17 7/8	20 1/8	5x7
12x12x22	6E	21	43 1/2	22 1/2	7 1/4	44 7/8	15 5/8	17 3/4	21	5x7
12x14x22A	5G,5H	21	45	24	7 1/4	42 3/8	15 7/8	18 3/4	22 1/4	5x7
12x14x22A	6D	21	45	24	7 1/4	44 7/8	15 7/8	18 3/4	22 1/4	5x7
12x14x22B	5G,5H	21	45	24	7 1/4	42 3/8	15 7/8	18 3/4	22 1/4	5x7
12x14x22B	6D	21	45	24	7 1/4	44 7/8	15 7/8	18 3/4	22 1/4	5x7
14x14x22A	6E	21	45	24	7 1/4	44 7/8	15 7/8	18 3/4	22 1/4	5x7
16x16x20	6F	24	56	32	23 1/2	63 3/8	17 3/4	20 1/2	24	6 DIA

AURORA MODEL 611A PUMP FORMED STEEL BASE

SECTION 610 PAGE 351
DATED OCTOBER 1992
SUPERSEDES PAGE 351
DATED NOVEMBER 1988

TABLE 1

DISCH. CASE BORE SUCT.	POWER FRAME	MOTOR FRAME	254T	256T	284TS	284T	286TS	286T
			C	21	23	22	24	24
6x6x12	4	BASE	3	3	3	4	4	4
		HY	8	8	8	8	8	8
6x6x12B	4	BASE	3	3	3	4	4	4
		HY	8	8	8	8	8	8
6x6x12	5	BASE			5	6	6	6
		HY			8	8	8	8
6x6x12B	5	BASE			5	6	6	6
		HY			8	8	8	8
6x8x15	5	BASE			5	6	6	6
		HY			8	8	8	8
6x8x18	5	BASE			8	8	8	8
		HY			8	8	8	8
8x8x15A	5	BASE		6	6	6	6	6
		HY		9 3/4	9 3/4	9 3/4	9 3/4	9 3/4
8x10x18	5	BASE			8	8	8	8
		HY			8	8	8	8
8x10x22	5	BASE						
		HY						
10x10x15	5	BASE			6	6	6	6
		HY			10	10	10	10
10x12x22	5	BASE						
		HY						
12x14x22A	5	BASE						
		HY						
12x14x22B	5	BASE						
		HY						
16x16x20	6	BASE						
		HY						

DISCH. CASE BORE SUCT.	POWER FRAME	MOTOR FRAME	324TS	324T	326TS	326T	364TS	364T	365TS	365T
			C	25	26	26	28	27	29	28
6x6x12	4	BASE	4	4						
		HY	8	8						
6x6x12B	4	BASE	4	4						
		HY	8	8						
6x6x12	5	BASE	8	8	8	9	16	16	16	16
		HY	8	8	8	8	8	8	8	8
6x6x12B	5	BASE	8	8	8	9	16	16	16	16
		HY	8	8	8	8	8	8	8	8
6x8x15	5	BASE	8	8	8	9	9	9	9	17
		HY	8	8	8	8	8	8	8	8
6x8x18	5	BASE	8	8	8	9	16	16	16	16
		HY	8	8	8	8	8	8	8	8
8x8x15A	5	BASE	9	9	9	9	16	16	16	16
		HY	9 3/4	9 3/4	9 3/4	9 3/4	9 3/4	9 3/4	9 3/4	9 3/4
8x10x18	5	BASE	8	8	8	9	16	16	16	16
		HY	8	8	8	8	8	8	8	8
8x10x22	5	BASE	16	16	16	16	16	16	16	16
		HY	8	8	8	8	8	8	8	8
10x10x15	5	BASE	9	9	9	9	17	17	17	17
		HY	10	10	10	10	10	10	10	10
10x12x22	5	BASE					16	16	16	17
		HY					8	8	8	8
12x14x22A	5	BASE					16	16	16	17
		HY					8	8	8	8
12x14x22B	5	BASE					16	16	16	17
		HY					8	8	8	8
16x16x20	6	BASE					17	17	17	17
		HY					10 1/4	10 1/4	10 1/4	10 1/4

NOTES:
1. ALL DIMENSIONS IN INCHES.
2. NOT FOR CONSTRUCTION PURPOSES UNLESS CERTIFIED.

**AURORA MODEL 611A PUMP
 FORMED STEEL BASE
 STANDARD COUPLING**

TABLE 1 (CONTINUED)

CASE BORE SUCT. DISCH.	POWER FRAME	MOTOR FRAME	404TS	404T	405TS	405T	444TS	444T	445TS	445T
		C	30	33	31	34	34	38	36	40
6x8x15	5	BASE	17	17	17	17	17	17	17	17
		HY	8	8	8	8	8	8	8	8
6x8x18	5	BASE	16	17	17	17	17	17	17	17
		HY	8	8	8	8	8	8	8	8
8x8x15A	5	BASE	17	17	17	17				
		HY	9 3/4	9 3/4	9 3/4	9 3/4				
8x10x18	5	BASE	16	17	17	17	17	17	17	17
		HY	8	8	8	8	8	8	8	8
8x10x22	5	BASE	16	17	17	17	17	17	17	17
		HY	8	8	8	8	8	8	8	8
10x10x15	5	BASE	17	17	17	17	17	17	17	17
		HY	10	10	10	10	10	10	10	10
10x10x22	6	BASE								17
		HY								8
10x12x22	5	BASE	17	17	17	17	17	17	17	17
		HY	8	8	8	8	8	8	8	8
10x12x22	6	BASE	17	17	17	17	17	17	17	17
		HY	8	8	8	8	8	8	8	8
12x12x22	6	BASE								17
		HY								8
12x14x22A	5	BASE	17	17	17	17	17	17	17	17
		HY	8	8	8	8	8	8	8	8
12x14x22A	6	BASE	17	17	17	17	17	17	17	17
		HY	8	8	8	8	8	8	8	8
12x14x22B	5	BASE	17	17	17	17	17	17	17	17
		HY	8	8	8	8	8	8	8	8
12x14x22B	6	BASE	17	17	17	17	17	17	17	17
		HY	8	8	8	8	8	8	8	8
14x14x22A	6	BASE								17
		HY								8
16x16x20	6	BASE	17	18	18	18	18	18	18	18
		HY	10 1/4	10 1/4	10 1/4	10 1/4	10 1/4	10 1/4	10 1/4	10 1/4

NOTES:

1. ALL DIMENSIONS IN INCHES.
2. NOT FOR CONSTRUCTION PURPOSES UNLESS CERTIFIED.

AURORA MODEL 611A PUMP FORMED STEEL BASE SPACER COUPLING

SECTION 610 PAGE 353
DATED OCTOBER 1992
SUPERSEDES PAGE 353
DATED NOVEMBER 1988

TABLE 2

CASE BORE SUCT. DISCH.	POWER FRAME	MOTOR FRAME	254T	256T	284TS	284T	286TS	286T
			21	23	22	24	24	25
6x6x12	4	BASE	4	4	4	4	4	4
		HY	8	8	8	8	8	8
6x6x12B	4	BASE	4	4	4	4	4	4
		HY	8	8	8	8	8	8
6x6x12	5	BASE			9	9	9	9
		HY			8	8	8	8
6x6x12B	5	BASE			9	9	9	9
		HY			8	8	8	8
6x8x15	5	BASE			6	9	9	9
		HY			8	8	8	8
6x8x18	5	BASE			9	9	9	9
		HY			8	8	8	8
8x8x15A	5	BASE		9	9	9	9	9
		HY		9 3/4	9 3/4	9 3/4	9 3/4	9 3/4
8x10x18	5	BASE			9	9	9	9
		HY			8	8	8	8
8x10x22	5	BASE						
		HY						
10x10x15	5	BASE			9	9	9	9
		HY			10	10	10	10
10x12x22	5	BASE						
		HY						
12x14x22A	5	BASE						
		HY						
12x14x22B	5	BASE						
		HY						
16x16x20	6	BASE						
		HY						

CASE BORE SUCT. DISCH.	POWER FRAME	MOTOR FRAME	324TS	324T	326TS	326T	364TS	364T	365TS	365T
			25	26	26	28	27	29	28	30
6x6x12	4	BASE	4	5						
		HY	8	8						
6x6x12B	4	BASE	4	5						
		HY	8	8						
6x6x12	5	BASE	9	9	9	9	17	17	17	17
		HY	8	8	8	8	8	8	8	8
6x6x12B	5	BASE	9	9	9	9	17	17	17	17
		HY	8	8	8	8	8	8	8	8
6x8x15	5	BASE	9	9	9	10	17	17	17	17
		HY	8	8	8	8	8	8	8	8
6x8x18	5	BASE	9	9	9	9	17	17	17	17
		HY	8	8	8	8	8	8	8	8
8x8x15A	5	BASE	9	10	10	10	17	17	17	17
		HY	9 3/4	9 3/4	9 3/4	9 3/4	9 3/4	9 3/4	9 3/4	9 3/4
8x10x18	5	BASE	9	9	9	10	17	17	17	17
		HY	8	8	8	8	8	8	8	8
8x10x22	5	BASE	17	17	17	17	17	17	17	17
		HY	8	8	8	8	8	8	8	8
10x10x15	5	BASE	9	10	10	10	17	17	17	17
		HY	0	10	10	10	10	10	10	10
10x12x22	5	BASE					17	17	17	17
		HY					8	8	8	8
12x14x22A	5	BASE					17	17	17	17
		HY					8	8	8	8
12x14x22B	5	BASE					17	17	17	17
		HY					8	8	8	8
16x16x20	6	BASE					18	18	18	18
		HY					10 1/4	10 1/4	10 1/4	10 1/4

NOTES:
1. ALL DIMENSIONS IN INCHES.
2. NOT FOR CONSTRUCTION PURPOSES UNLESS CERTIFIED.

**AURORA MODEL 611A PUMP
 FORMED STEEL BASE
 STANDARD COUPLING**

TABLE 2 (CONTINUED)

DISCH. SUCT. CASE BORE	POWER FRAME	MOTOR FRAME	404TS	404T	405TS	405T	444TS	444T	445TS	445T
		C	30	33	31	34	34	38	36	40
6x8x15	5	BASE	17	17	17	17	17	18	17	18
		HY	8	8	8	8	8	8	8	8
6x8x18	5	BASE	17	17	17	17	17	18	17	18
		HY	8	8	8	8	8	8	8	8
8x8x15A	5	BASE	17	17	17	17				
		HY	9 3/4	9 3/4	9 3/4	9 3/4				
8x10x18	5	BASE	17	17	17	17	17	18	18	18
		HY	8	8	8	8	8	8	8	8
8x10x22	5	BASE	17	17	17	17	17	18	18	18
		HY	8	8	8	8	8	8	8	8
10x10x15	5	BASE	17	18	17	18	18	18	18	18
		HY	10	10	10	10	10	10	10	10
10x10x22	6	BASE								18
		HY								8
10x12x22	5	BASE	17	17	17	18	18	18	18	18
		HY	8	8	8	8	8	8	8	8
10x12x22	6	BASE	17	18	17	18	18	18	18	18
		HY	8	8	8	8	8	8	8	8
12x12x22	6	BASE								18
		HY								8
12x14x22A	5	BASE	17	17	17	18	18	18	18	18
		HY	8	8	8	8	8	8	8	8
12x14x22A	6	BASE	17	17	17	18	18	18	18	18
		HY	8	8	8	8	8	8	8	8
12x14x22B	5	BASE	17	17	17	18	18	18	18	18
		HY	8	8	8	8	8	8	8	8
12x14x22B	6	BASE	17	17	17	18	18	18	18	18
		HY	8	8	8	8	8	8	8	8
14x14x22A	6	BASE								18
		HY								8
16x16x20	6	BASE	18	18	18	18	18	18	18	18
		HY	10 1/4	10 1/4	10 1/4	10 1/4	10 1/4	10 1/4	10 1/4	10 1/4

NOTES:
 1. ALL DIMENSIONS IN INCHES.
 2. NOT FOR CONSTRUCTION PURPOSES UNLESS CERTIFIED.

AURORA MODEL 611A PUMP SPACER COUPLING

SECTION 610 PAGE 355
DATED OCTOBER 1992
SUPERSEDES PAGE 355
DATED NOVEMBER 1988

TABLE 3

DISCH. SUCT. CASE BORE	POWER FRAME	MOTOR FRAME	254T	256T	284TS	284T	286TS	286T	324TS	324T	326TS	326T	364TS	364T	365TS	365T	
			SIZE	HT	SIZE	HT	SIZE	HT	SIZE	HT	SIZE	HT	SIZE	HT	SIZE	HT	SIZE
6x6x12	4	SIZE	7	8	8	8	9	9	9	9							
		HT	5	5	5	5	5	5	5	5							
6x6x12B	4	SIZE	7	8	8	8	9	9	9	9							
		HT	5	5	5	5	5	5	5	5							
6x6x12	5	SIZE			9	9	9	9	9	9	10	10	12	12	12	12	
		HT			7 3/4	7 3/4	7 3/4	7 3/4	7 3/4	7 3/4	7 3/4	7 3/4	7 3/4	7 3/4	7 3/4	7 3/4	7 3/4
6x6x12B	5	SIZE			9	9	9	9	9	9	10	10	12	12	12	12	
		HT			7 3/4	7 3/4	7 3/4	7 3/4	7 3/4	7 3/4	7 3/4	7 3/4	7 3/4	7 3/4	7 3/4	7 3/4	7 3/4
6x8x15	5	SIZE			9	9	9	9	9	9	10	10	12	10	12	12	
		HT			7 3/4	7 3/4	7 3/4	7 3/4	7 3/4	7 3/4	7 3/4	7 3/4	7 3/4	7 3/4	7 3/4	7 3/4	7 3/4
6x8x18	5	SIZE			9	9	9	9	9	9	10	10	10	10	12	12	
		HT			7 3/4	7 3/4	7 3/4	7 3/4	7 3/4	7 3/4	7 3/4	7 3/4	7 3/4	7 3/4	7 3/4	7 3/4	7 3/4
8x8x15A	5	SIZE		9	9	9	9	9	9	9	10	10	12	10	12	12	
		HT		7 3/4	7 3/4	7 3/4	7 3/4	7 3/4	7 3/4	7 3/4	7 3/4	7 3/4	7 3/4	7 3/4	7 3/4	7 3/4	7 3/4
8x10x18	5	SIZE			9	9	9	9	9	9	10	10	10	10	12	12	
		HT			7 3/4	7 3/4	7 3/4	7 3/4	7 3/4	7 3/4	7 3/4	7 3/4	7 3/4	7 3/4	7 3/4	7 3/4	7 3/4
8x10x22	5	SIZE			10	10	10	10	10	10	10	10	10	10	11	11	
		HT			9	9	9	9	9	9	9	9	9	9	9	9	9
10x10x15	5	SIZE			10	10	10	10	10	10	10	10	10	10	11	11	
		HT			9	9	9	9	9	9	9	9	9	9	9	9	9
10x12x22	5	SIZE											10	10	11	11	
		HT												9	9	9	9
12x14x22A	5	SIZE											10	10	11	11	
		HT												9	9	9	9
12x14x22B	5	SIZE											10	10	11	11	
		HT												9	9	9	9
16x16x20	6	SIZE											11	11	11	11	
		HT												9	9	9	9

NOTES:

1. ALL DIMENSIONS IN INCHES.
2. NOT FOR CONSTRUCTION PURPOSES UNLESS CERTIFIED.
3. SIZE: COUPLING SIZE FOR TYPE SC WOODS SURE-FLEX SPACER COUPLINGS.
4. HT: COUPLING GAP (DISTANCE BETWEEN SHAFTS)

AURORA MODEL 611A PUMP SPACER COUPLING

TABLE 3 (CONTINUED)

CASE BORE SUCT. DISCH.	POWER FRAME	MOTOR FRAME	404TS	404T	405TS	405T	444TS	444T	445TS	445T
			SIZE	HT	SIZE	HT	SIZE	HT	SIZE	HT
6x8x15	5	SIZE	12	12	12	12	12	12	13	13
		HT	7 3/4	7 3/4	7 3/4	7 3/4	7 3/4	7 3/4	7 3/4	7 3/4
6x8x18	5	SIZE	12	12	12	12	12	12	13	13
		HT	7 3/4	7 3/4	7 3/4	7 3/4	7 3/4	7 3/4	7 3/4	7 3/4
8x8x15A	5	SIZE	12	12	12	12				
		HT	7 3/4	7 3/4	7 3/4	7 3/4				
8x10x18	5	SIZE	12	12	12	12	12	12	13	13
		HT	7 3/4	7 3/4	7 3/4	7 3/4	7 3/4	7 3/4	7 3/4	7 3/4
8x10x22	5	SIZE	11	11	11	11	13	13	13	13
		HT	9	9	9	9	9	9	9	9
10x10x15	5	SIZE	11	11	12	12	13	13	13	13
		HT	9	9	9	9	9	9	9	9
10x10x22	6	SIZE								13
		HT								
10x12x22	5	SIZE	12	12	12	12	12	12	13	13
		HT	9	9	9	9	9	9	9	9
10x12x22	6	SIZE	12	12	12	12	12	12	13	13
		HT	9	9	9	9	9	9	9	9
12x12x22	6	SIZE								13
		HT								
12x14x22A	5	SIZE	12	12	12	12	12	12	13	13
		HT	9	9	9	9	9	9	9	9
12x14x22A	6	SIZE	12	12	12	12	12	12	13	13
		HT	9	9	9	9	9	9	9	9
12x14x22B	5	SIZE	12	12	12	12	12	12	13	13
		HT	9	9	9	9	9	9	9	9
12x14x22B	6	SIZE	12	12	12	12	12	12	13	13
		HT	9	9	9	9	9	9	9	9
14x14x22A	6	SIZE								13
		HT								
16x16x20	6	SIZE	11	11	11	11	11	11	11	11
		HT	9	9	9	9	9	9	9	9

NOTES:

1. ALL DIMENSIONS IN INCHES.
2. NOT FOR CONSTRUCTION PURPOSE UNLESS CERTIFIED.
3. SIZE: COUPLING SIZE FOR TYPE SC WOODS SURE-FLEX SPACER COUPLINGS.
4. HT: COUPLING GAP (DISTANCE BETWEEN SHAFTS)

AURORA MODEL 611A PUMP DRIP RIM STEEL BASE STANDARD COUPLING

SECTION 610 PAGE 357
DATED OCTOBER 1992
SUPERSEDES PAGE 357
DATED NOVEMBER 1988

TABLE 4

DISCH. SUCTION CASE BORE	POWER FRAME	MOTOR	254T	256T	284TS	284T	286TS	286T
		FRAME						
		C	21	23	22	24	24	25
6x6x12	4	BASE	10	10	10	10	10	10
		HY	8	8	8	8	8	8
6x6x12B	4	BASE	10	10	10	10	10	10
		HY	8	8	8	8	8	8
6x6x12	5	BASE			14	14	14	14
		HY			8	8	8	8
6x6x12B	5	BASE			14	14	14	14
		HY			8	8	8	8
6x8x15	5	BASE			14	14	14	14
		HY			8	8	8	8
6x8x18	5	BASE			14	14	14	14
		HY			8	8	8	8
8x8x15A	5	BASE		14	14	14	14	14
		HY		9 3/4	9 3/4	9 3/4	9 3/4	9 3/4
8x10x18	5	BASE			14	14	14	14
		HY			8	8	8	8
8x10x22	5	BASE						
		HY						
10x10x15	5	BASE			17	17	17	17
		HY			11	11	11	11
10x12x22	5	BASE						
		HY						
12x14x22A	5	BASE						
		HY						
12x14x22B	5	BASE						
		HY						
16x16x20	6	BASE						
		HY						

DISCH. SUCTION CASE BORE	POWER FRAME	MOTOR	324TS	324T	326TS	326T	364TS	364T	365TS	365T
		FRAME								
		C	25	26	26	28	27	29	28	30
6x6x12	4	BASE	10	10						
		HY	8	8						
6x6x12B	4	BASE	10	10						
		HY	8	8						
6x6x12	5	BASE	14	14	14	14	14	14	14	14
		HY	8	8	8	8	8	8	8	8
6x6x12B	5	BASE	14	14	14	14	14	14	14	14
		HY	8	8	8	8	8	8	8	8
6x8x15	5	BASE	14	14	14	14	14	14	14	14
		HY	8	8	8	8	8	8	8	8
6x8x18	5	BASE	14	14	14	14	14	14	14	14
		HY	8	8	8	8	8	8	8	8
8x8x15A	5	BASE	14	14	14	14	17	17	17	17
		HY	9 3/4	9 3/4	9 3/4	9 3/4	9 3/4	9 3/4	9 3/4	9 3/4
8x10x18	5	BASE	14	14	14	14	17	17	17	17
		HY	8	8	8	8	8	8	8	8
8x10x22	5	BASE	17	17	17	17	18	18	18	18
		HY	8	8	8	8	8	8	8	8
10x10x15	5	BASE	17	17	17	17	18	18	18	18
		HY	11	11	11	11	11	11	11	11
10x12x22	5	BASE					17	17	17	17
		HY					10	10	10	10
12x14x22A	5	BASE					18	18	18	18
		HY					10	10	10	10
12x14x22B	5	BASE					18	18	18	18
		HY					10	10	10	10
16x16x20	6	BASE					13	13	13	13
		HY					11 1/2	11 1/2	11 1/2	11 1/2

NOTES:
1. ALL DIMENSIONS IN INCHES.
2. NOT FOR CONSTRUCTION PURPOSES UNLESS CERTIFIED.

AURORA MODEL 611A PUMP
DRIP RIM STEEL BASE
STANDARD COUPLING

TABLE 4 (CONTINUED)

DISCH. SUCT. CASE BORE	POWER FRAME	MOTOR FRAME	404TS	404T	405TS	405T	444TS	444T	445TS	445T
		C	30	33	31	34	34	38	36	40
6x8x15	5	BASE	18	18	18	18	19	19	19	19
		HY	8	8	8	8	8	8	8	8
6x8x18	5	BASE	18	18	18	18	18	18	19	19
		HY	8	8	8	8	8	8	8	8
8x8x15A	5	BASE	18	18	18	18				
		HY	9 3/4	9 3/4	9 3/4	9 3/4				
8x10x18	5	BASE	18	18	18	18	18	18	19	19
		HY	8	8	8	8	8	8	8	8
8x10x22	5	BASE	18	18	18	18	19	19	19	19
		HY	8	8	8	8	8	8	8	8
10x10x15	5	BASE	18	18	18	18	19	19	19	19
		HY	11	11	11	11	11	11	11	11
10x10x22	6	BASE								21
		HY								10
10x12x22	5	BASE	18	18	18	18	18	18	19	19
		HY	10	10	10	10	10	10	10	10
10x12x22	6	BASE	18	18	18	18	19	19	19	19
		HY	10	10	10	10	10	10	10	10
12x12x22	6	BASE								21
		HY								10
12x14x22A	5	BASE	18	18	18	18	19	19	19	19
		HY	10	10	10	10	10	10	10	10
12x14x22A	6	BASE	18	18	18	18	19	19	19	19
		HY	10	10	10	10	10	10	10	10
12x14x22B	5	BASE	18	18	18	18	19	19	19	19
		HY	10	10	10	10	10	10	10	10
12x14x22B	6	BASE	18	18	18	18	19	19	19	19
		HY	10	10	10	10	10	10	10	10
14x14x22A	6	BASE								21
		HY								10
16x16x20	6	BASE	18	19	19	19	19	19	19	19
		HY	11 1/2	11 1/2	11 1/2	11 1/2	11 1/2	11 1/2	11 1/2	11 1/2

NOTES:

1. ALL DIMENSIONS IN INCHES.
2. NOT FOR CONSTRUCTION PURPOSES UNLESS CERTIFIED.

AURORA MODEL 611A PUMP DRIP RIM STEEL BASE SPACER COUPLING

SECTION 610 PAGE 359
DATED OCTOBER 1992
SUPERSEDES PAGE 359
DATED NOVEMBER 1988

TABLE 5

DISCH. CASE BORE SUCT.	POWER FRAME	MOTOR FRAME	254T	256T	284TS	284T	286TS	286T
			C					
6x6x12	4	BASE	10	13	13	13	13	13
		HY	8	8	8	8	8	8
6x6x12B	4	BASE	10	13	13	13	13	13
		HY	8	8	8	8	8	8
6x6x12	5	BASE			14	14	17	17
		HY			8	8	8	8
6x6x12B	5	BASE			14	14	17	17
		HY			8	8	8	8
6x8x15	5	BASE			14	14	17	17
		HY			8	8	8	8
6x8x18	5	BASE			14	14	17	17
		HY			8	8	8	8
8x8x15A	5	BASE		17	17	17	17	17
		HY		9 3/4	9 3/4	9 3/4	9 3/4	9 3/4
8x10x18	5	BASE			17	17	17	17
		HY			8	8	8	8
8x10x22	5	BASE						
		HY						
10x10x15	5	BASE			18	18	18	18
		HY			11	11	11	11
10x12x22	5	BASE						
		HY						
12x14x22A	5	BASE						
		HY						
12x14x22B	5	BASE						
		HY						
16x16x20	6	BASE						
		HY						

DISCH. CASE BORE SUCT.	POWER FRAME	MOTOR FRAME	324TS	324T	326TS	326T	364TS	364T	365TS	365T
			C							
6x6x12	4	BASE	13	13						
		HY	8	8						
6x6x12B	4	BASE	13	13						
		HY	8	8						
6x6x12	5	BASE	17	17	18	18	18	18	18	18
		HY	8	8	8	8	8	8	8	8
6x6x12B	5	BASE	17	17	18	18	18	18	18	18
		HY	8	8	8	8	8	8	8	8
6x8x15	5	BASE	17	17	18	18	18	18	18	18
		HY	8	8	8	8	8	8	8	8
6x8x18	5	BASE	17	17	18	18	18	18	18	18
		HY	8	8	8	8	8	8	8	8
8x8x15A	5	BASE	18	18	18	18	18	18	18	18
		HY	9 3/4	9 3/4	9 3/4	9 3/4	9 3/4	9 3/4	9 3/4	9 3/4
8x10x18	5	BASE	18	18	18	18	18	18	18	18
		HY	8	8	8	8	8	8	8	8
8x10x22	5	BASE	18	18	18	18	18	18	19	19
		HY	8	8	8	8	8	8	8	8
10x10x15	5	BASE	18	18	18	18	18	18	18	18
		HY	11	11	11	11	11	11	11	11
10x12x22	5	BASE					18	18	18	18
		HY					10	10	10	10
12x14x22A	5	BASE					18	18	18	18
		HY					10	10	10	10
12x14x22B	5	BASE					18	18	18	18
		HY					10	10	10	10
16x16x20	6	BASE					19	19	19	19
		HY					11 1/2	11 1/2	11 1/2	11 1/2

NOTES:
1. ALL DIMENSIONS IN INCHES.
2. NOT FOR CONSTRUCTION PURPOSES UNLESS CERTIFIED.

**AURORA MODEL 611A PUMP
 DRIP RIM STEEL BASE
 SPACER COUPLING**

TABLE 5 (CONTINUED)

DISCH. SUCT. CASE BORE	POWER FRAME	MOTOR FRAME	404TS	404T	405TS	405T	444TS	444T	445TS	445T
		C	30	33	31	34	34	38	36	40
6x8x15	5	BASE	18	18	18	18	19	19	19	19
		HY	8	8	8	8	8	8	8	8
6x8x18	5	BASE	18	18	18	18	19	19	19	19
		HY	8	8	8	8	8	8	8	8
8x8x15A	5	BASE	18	18	19	19				
		HY	9 3/4	9 3/4	9 3/4	9 3/4				
8x10x18	5	BASE	18	18	19	19	19	19	19	19
		HY	8	8	8	8	8	8	8	8
8x10x22	5	BASE	19	19	19	19	19	19	19	19
		HY	8	8	8	8	8	8	8	8
10x10x15	5	BASE	19	19	19	19	19	19	19	19
		HY	11	11	11	11	11	11	11	11
10x10x22	6	BASE								21
		HY								10
10x12x22	5	BASE	19	19	19	19	19	19	19	19
		HY	10	10	10	10	10	10	10	10
10x12x22	6	BASE	19	19	19	19	19	19	19	19
		HY	8	8	8	8	8	8	8	8
12x12x22	6	BASE								21
		HY								10
12x14x22A	5	BASE	19	19	19	19	19	19	19	19
		HY	10	10	10	10	10	10	10	10
12x14x22A	6	BASE	19	19	19	19	19	19	19	19
		HY	8	8	8	8	8	8	8	8
12x14x22B	5	BASE	19	19	19	19	19	19	19	19
		HY	10	10	10	10	10	10	10	10
12x14x22B	6	BASE	19	19	19	19	19	19	19	19
		HY	8	8	8	8	8	8	8	8
14x14x22A	6	BASE								21
		HY								10
16x16x20	6	BASE	21	21	21	21	21	21	21	21
		HY	11 1/2	11 1/2	11 1/2	11 1/2	11 1/2	11 1/2	11 1/2	11 1/2

NOTES:
 1. ALL DIMENSIONS IN INCHES.
 2. NOT FOR CONSTRUCTION PURPOSES UNLESS CERTIFIED.

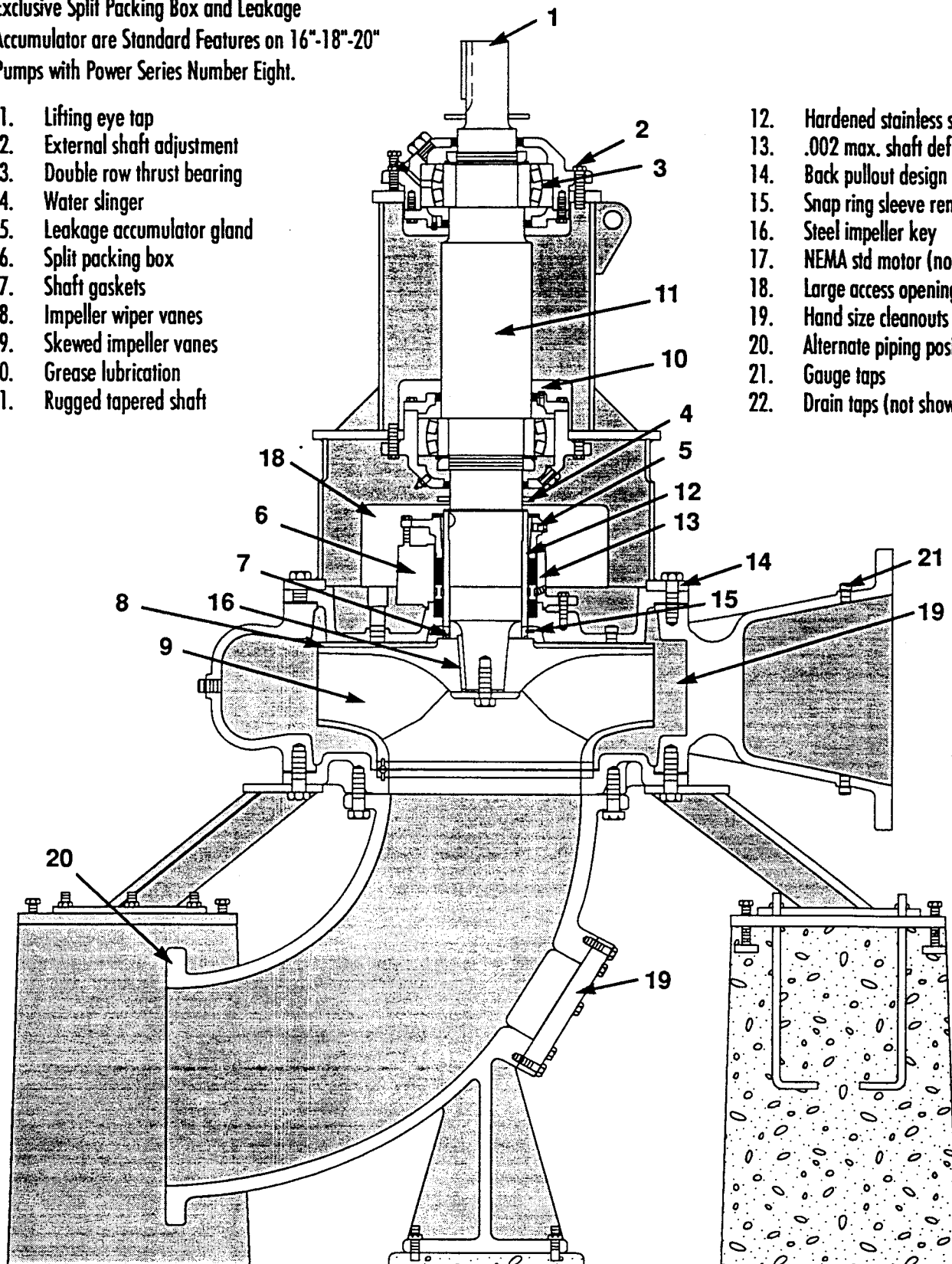
PUMP FEATURES MODEL 612A 16"-18"-20" PUMPS

Section 610 Page 0
Dated AUGUST 1993
SUPERSEDES Section 610 Page 0
Dated NOVEMBER 1988

Exclusive Split Packing Box and Leakage Accumulator are Standard Features on 16"-18"-20" Pumps with Power Series Number Eight.

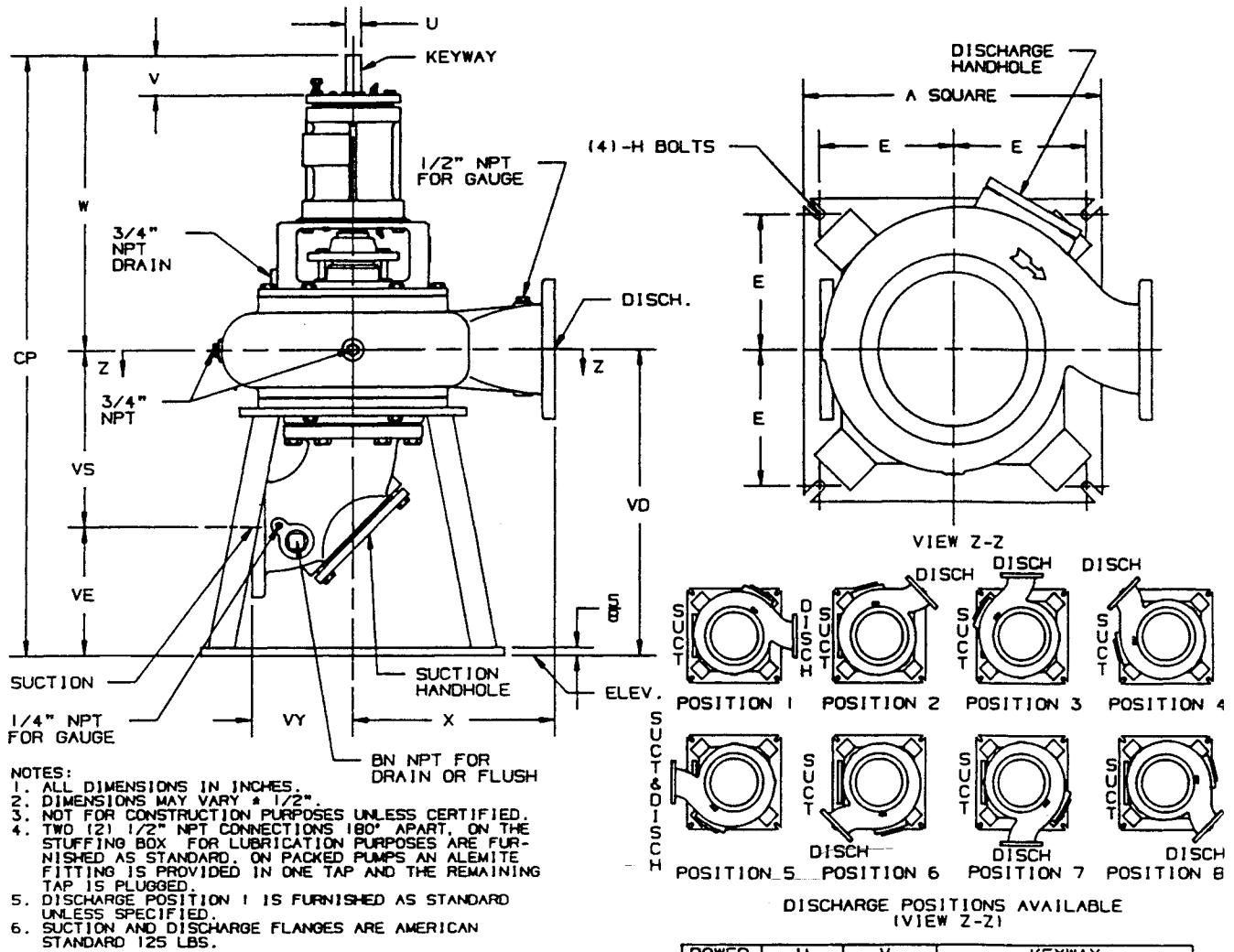
1. Lifting eye tap
2. External shaft adjustment
3. Double row thrust bearing
4. Water slinger
5. Leakage accumulator gland
6. Split packing box
7. Shaft gaskets
8. Impeller wiper vanes
9. Skewed impeller vanes
10. Grease lubrication
11. Rugged tapered shaft

12. Hardened stainless steel sleeve
13. .002 max. shaft deflection
14. Back pullout design
15. Snap ring sleeve removal
16. Steel impeller key
17. NEMA std motor (not shown)
18. Large access openings
19. Hand size cleanouts
20. Alternate piping positions
21. Gauge taps
22. Drain taps (not shown)



AURORA MODEL 612A PUMP 6", 8", 10", 12" & 14" PUMPS

SECTION 610 PAGE 203
DATED OCTOBER 1992
SUPERSEDES PAGE 203
DATED NOVEMBER 1988

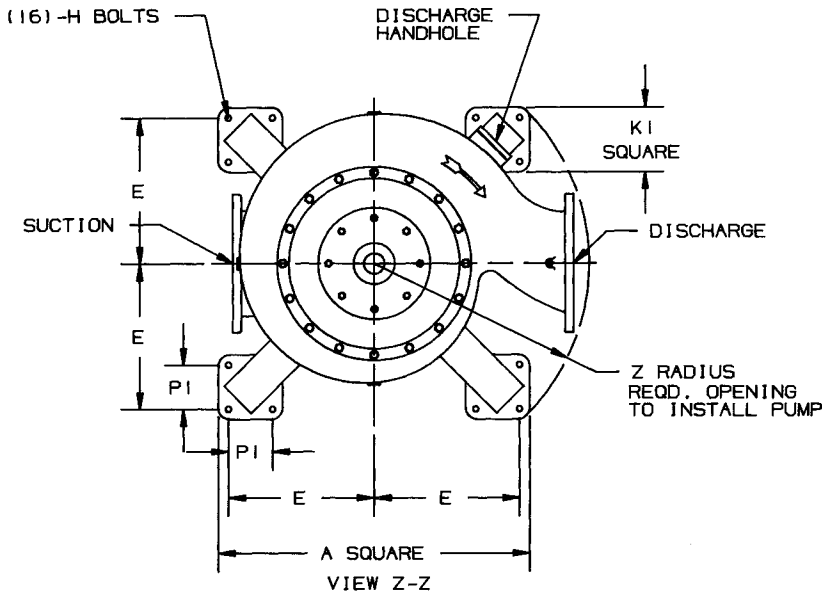


POWER FRAME	U	V	KEYWAY		
			LENGTH	WIDTH	DEPTH
4C, 4D	1 1/4	3 3/16	2	1/4	1/8
5E, 5F 5G, 5H	2 3/8	6 3/8	4	5/8	5/16
6D	2 7/8	6 5/8	5	3/4	3/8
6E	2 7/8	5 3/4	4	3/4	3/8

DISCH SUCT CASE BORE	POWER FRAME	A	BN	E	H	VY	W	X	CP	VD	VE	VS	HANDHOLE	
													DISCH.	SUCT.
6x6x12	4C, 4D	24	1 1/2	10 3/4	5/8	8	23 5/16	14	47 9/16	24 1/4	10 1/8	14 1/8	5x5	6
6x6x12	5E, 5F	24	1 1/2	10 3/4	5/8	8	34 3/16	14	58 7/16	24 1/4	10 1/8	14 1/8	5x5	6
6x6x12B	4C, 4D	24	1 1/2	10 3/4	5/8	8	23 7/16	16	47 9/16	24 1/8	10 1/8	14	5x5	6
6x6x12B	5E, 5F	24	1 1/2	10 3/4	5/8	8	34 5/16	16	58 7/16	24 1/8	10 1/8	14	5x5	6
6x8x15	5E, 5F	30	1 1/2	13 3/4	3/4	9	33 3/4	16	65 7/8	32 1/8	17	15 1/8	5x5	6
6x8x15	5E, 5F	30	1 1/2	13 3/4	3/4	9	34 1/16	18	66 7/16	32 3/8	17	15 3/8	5x5	6
8x8x15A	5E	30	1 1/2	13 3/4	3/4	9	34 1/8	19	66 1/2	32 3/8	14 1/4	18 1/8	5x7	6
8x10x18	5G, 5H	30	1 1/2	13 3/4	3/4	11	34 5/8	19	67 5/8	33	15 3/16	17 13/16	5x7	6
8x10x22	5G, 5H	37	1 1/2	17	7/8	11	34 5/8	22	69 1/8	34 1/2	16 5/8	17 7/8	5x7	6
10x10x15	5E, 5F	30	1 1/2	13 3/4	3/4	11	34 13/16	20	67 3/4	32 15/16	11 7/8	21 1/16	5x7	6
10x10x22	6E	37	1 1/2	17	7/8	11	37 1/8	22 1/2	71 5/8	34 1/2	16 5/8	17 7/8	5x7	6
10x12x22	5G, 5H	37	1 1/2	17	7/8	12	35 1/16	22 1/2	70 3/16	35 1/8	15 9/16	19 9/16	5x7	8
10x12x22	6D	37	1 1/2	17	7/8	12	37 9/16	22 1/2	72 11/16	35 1/8	15 9/16	19 9/16	5x7	8
12x12x22	6E	37	1 1/2	17	7/8	12	37 5/8	22 1/2	72 3/4	35 1/8	15 9/16	19 9/16	5x7	8
12x14x22A	5G, 5H	37	2 1/2	17	7/8	14	35 1/8	24	70 1/4	35 1/8	13 7/8	21 1/4	5x7	8
12x14x22A	6D	37	2 1/2	17	7/8	14	37 5/8	24	72 3/4	35 1/8	13 7/8	21 1/4	5x7	8
12x14x22B	5G, 5H	37	2 1/2	17	7/8	14	35 1/8	24	70 1/4	35 1/8	13 7/8	21 1/4	5x7	8
12x14x22B	6D	37	2 1/2	17	7/8	14	37 5/8	24	72 3/4	35 1/8	13 7/8	21 1/4	5x7	8
14x14x22A	6E	37	2 1/2	17	7/8	14	37 5/8	24	72 3/4	35 1/8	13 7/8	21 1/4	5x7	8

AURORA MODEL 612A PUMP

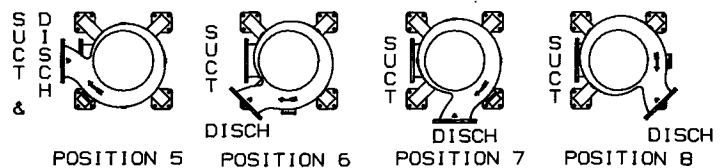
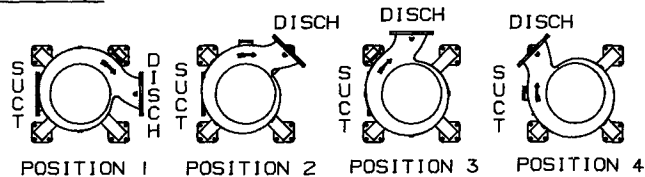
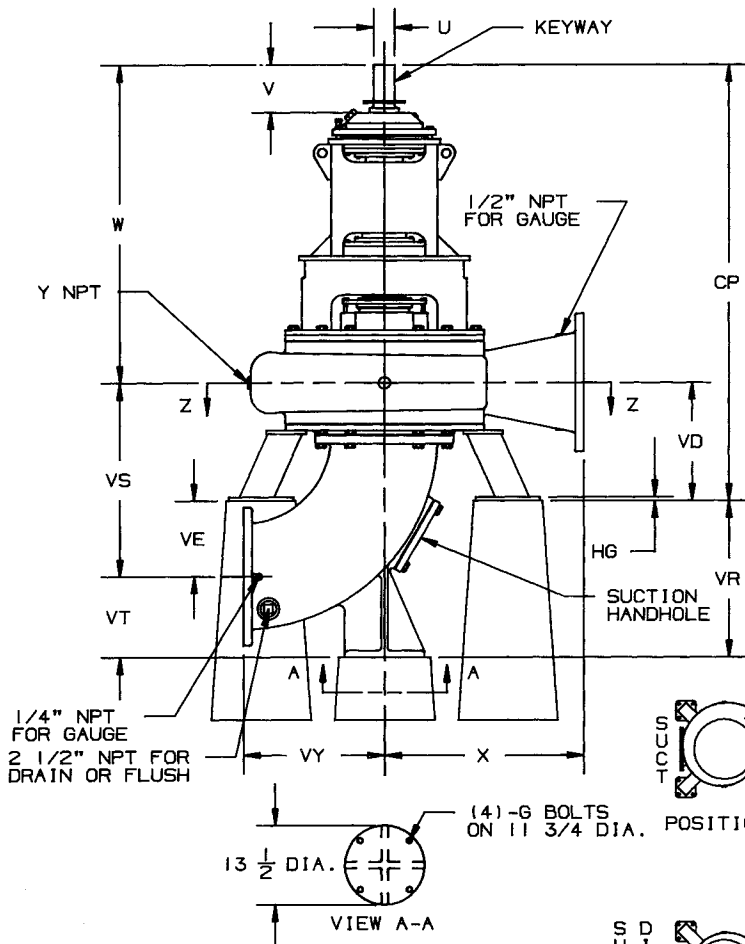
16", 18" & 20" PUMPS



CASE BORE	16x16x28	18x18x28	20x20x28
SUCT.			
DISCH.	16x16x28	18x18x28	20x20x28
POWER FRAME	8	8	8
A	53	53	53
E	24 3/4	24 3/4	24 3/4
G	3/4	3/4	3/4
H	7/8	7/8	7/8
KI	11	11	11
PI	7 1/2	7 1/2	7 1/2
W	54 3/8	55 1/8	55 5/8
X	34	37	42
Y	3/4	1	1
Z	36	38	44 1/4
CP	74 1/2	78	77 11/16
HG	5/8	5/8	5/8
VD	20 1/8	22 7/8	22 1/16
VE	12 15/16	14 1/8	21 15/16
VR	26 11/16	29 1/8	37 15/16
VS	33 1/16	37	44
VT	13 3/4	15	16
VY	24	26 1/2	29
HANDHOLE DISCH.	6	6	6
HANDHOLE SUCT.	8	8	8

U	V	KEYWAY		
		LENGTH	WIDTH	DEPTH
3 1/2	6 1/2	4 3/4	7/8	7/16

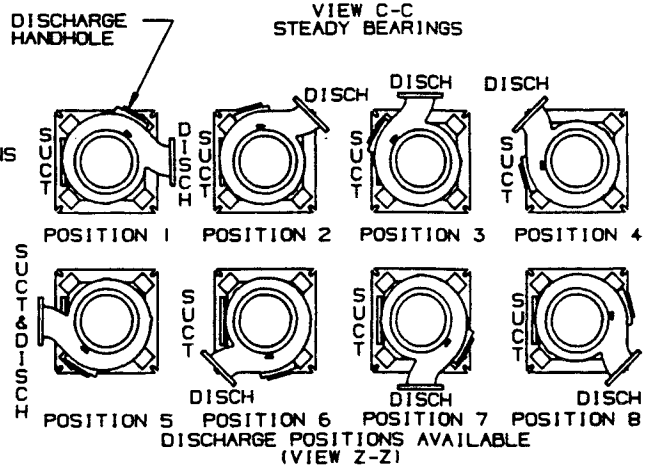
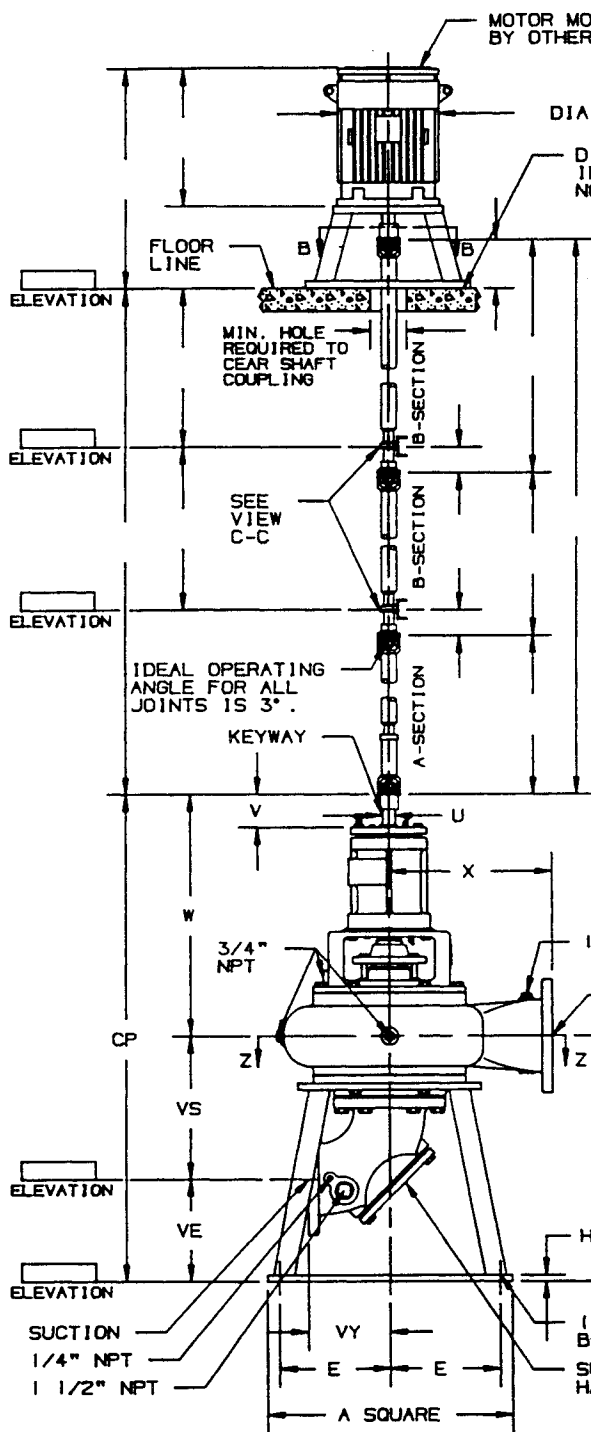
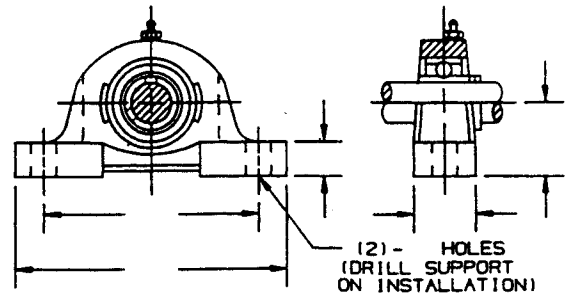
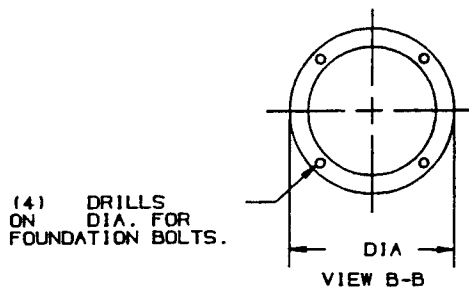
- NOTES:
1. ALL DIMENSIONS IN INCHES.
 2. DIMENSIONS MAY VARY ± 1/2".
 3. NOT FOR CONSTRUCTION PURPOSES UNLESS CERTIFIED.
 4. TWO (2) 1/2" NPT CONNECTIONS 180° APART, ON THE STUFFING BOX FOR LUBRICATION PURPOSES ARE FURNISHED AS STANDARD. ON PACKED PUMPS AN ALEMITE FITTING IS PROVIDED IN ONE TAP AND THE REMAINING TAP IS PLUGGED.
 5. DISCHARGE POSITION 1 IS FURNISHED AS STANDARD UNLESS SPECIFIED.
 6. SUCTION AND DISCHARGE FLANGES ARE AMERICAN STANDARD 125 LBS.



VIEW Z-Z

AURORA MODEL 612A PUMP 6" PUMPS - FLEXIBLE SHAFT

SECTION 610 PAGE 205
DATED OCTOBER 1992
SUPERSEDES PAGE 205
DATED NOVEMBER 1988



CASE BORE	6x6x12	6x6x12	6x6x12	6x6x12	6x6x15	6x6x18
SUCTION DISCHARGE	6x6x12	6x6x12	6x6x12	6x6x12	6x6x15	6x6x18
POWER FRAME	4C, 4D	5E, 5F	4C, 4D	5F	5E, 5F	5E, 5F
A	24	24	24	24	30	30
E	10 3/4	10 3/4	10 3/4	10 3/4	13 3/4	13 3/4
H	5/8	5/8	5/8	5/8	3/4	3/4
HG	5/8	5/8	5/8	5/8	5/8	5/8
W	23 5/16	34 3/16	23 7/16	34 5/16	33 3/4	34 1/16
X	14	14	16	16	16	18
CP	47 9/16	58 7/16	47 9/16	58 7/16	65 7/8	66 7/16
VD	24 1/4	24 1/4	24 1/8	24 1/8	32 1/8	32 3/8
VE	10 1/8	10 1/8	10 1/8	10 1/8	17	17
VS	14 1/8	14 1/8	14	14	15 1/8	15 3/8
VY	8	8	8	8	9	9
HANDHOLE DISCH.	5x5	5x5	5x5	5x5	5x5	5x5
HANDHOLE SUCT.	6	6	6	6	6	6

POWER FRAME	U	V	KEYWAY		
			LENGTH	WIDTH	DEPTH
4C, 4D	1 1/4	3 3/16	2	1/4	1/8
5E, 5F	2 3/8	6 3/8	4	5/8	5/16

- NOTES:
- ALL DIMENSIONS IN INCHES.
 - DIMENSIONS MAY VARY ± 1/2".
 - NOT FOR CONSTRUCTION PURPOSES UNLESS CERTIFIED.
 - TWO (2) 1/2" NPT CONNECTIONS 180° APART, ON THE STUFFING BOX FOR LUBRICATION PURPOSES ARE FURNISHED AS STANDARD. ON PACKED PUMPS AN ALEMITE FITTING IS PROVIDED IN ONE TAP AND THE REMAINING TAP IS PLUGGED.
 - DISCHARGE POSITION 1 IS FURNISHED AS STANDARD UNLESS SPECIFIED.
 - SUCTION AND DISCHARGE FLANGES ARE AMERICAN STANDARD 125 LBS.
 - CONDUIT BOX IS SHOWN IS APPROXIMATE LOCATION. DIMENSIONS ARE NOT SPECIFIED AS THEY MAY VARY WITH EACH MOTOR MANUFACTURER.

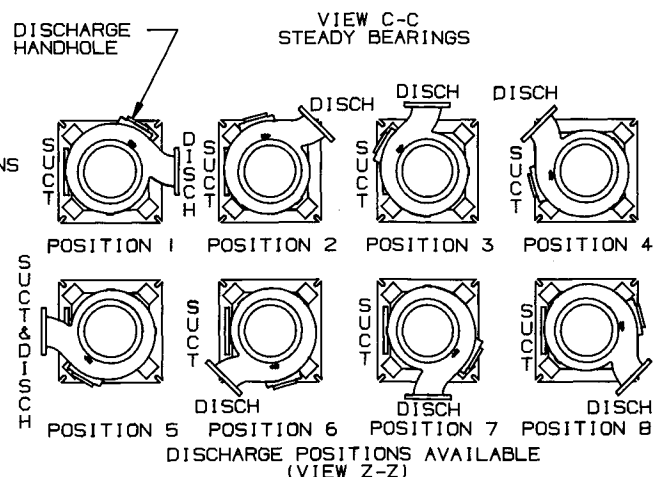
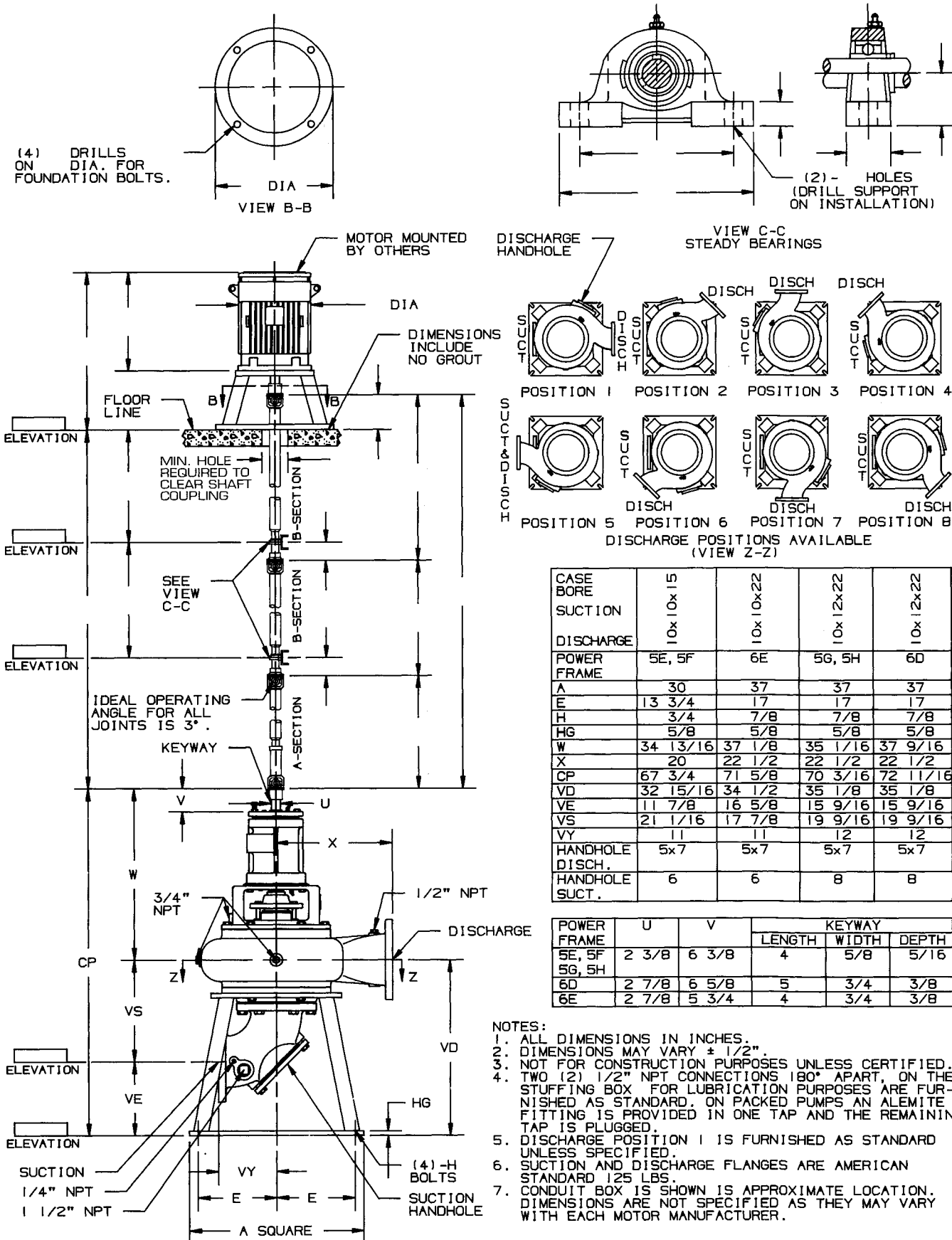
AURORA MODEL 612A PUMP

10" PUMPS FLEXIBLE SHAFT

DATED MAY 1996

SUPERSEDES PAGE 207

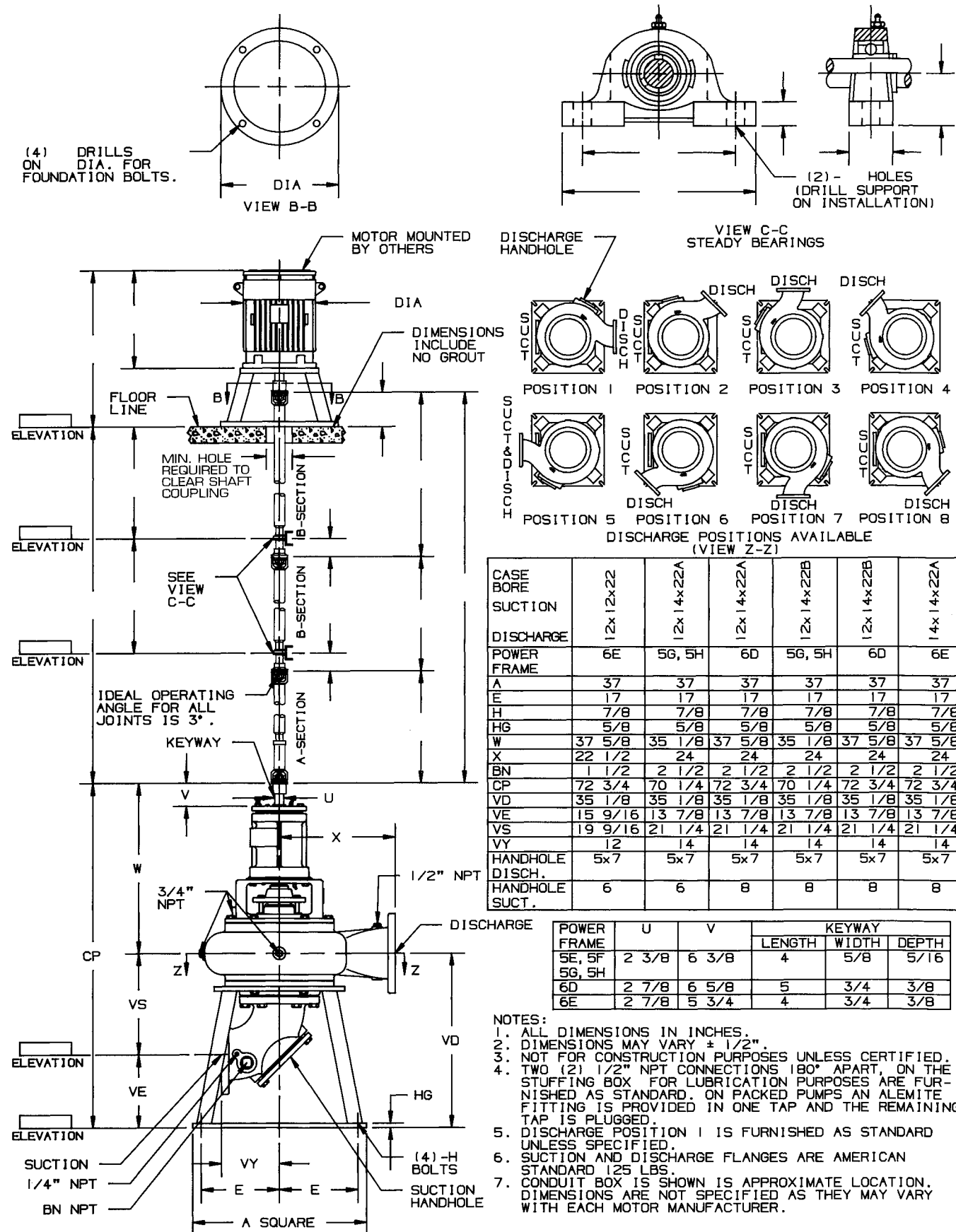
DATED NOVEMBER 1988



CASE BORE	15	22	22	22
SUCTION	10x10	10x22	10x12	10x22
DISCHARGE	10x10	10x22	10x12	10x22
POWER FRAME	5E, 5F	6E	5G, 5H	6D
A	30	37	37	37
E	13 3/4	17	17	17
H	3/4	7/8	7/8	7/8
HG	5/8	5/8	5/8	5/8
W	34 13/16	37 1/8	35 1/16	37 9/16
X	20	22 1/2	22 1/2	22 1/2
CP	67 3/4	71 5/8	70 3/16	72 11/16
VD	32 15/16	34 1/2	35 1/8	35 1/8
VE	11 7/8	16 5/8	15 9/16	15 9/16
VS	21 1/16	17 7/8	19 9/16	19 9/16
VY	11	11	12	12
HANDHOLE DISCH.	5x7	5x7	5x7	5x7
HANDHOLE SUCT.	6	6	8	8

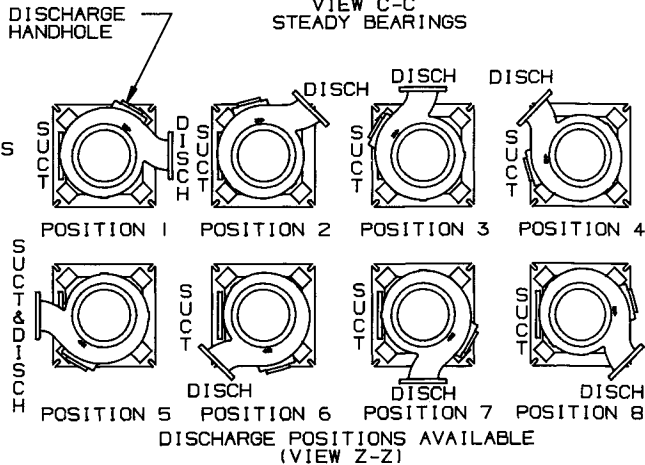
POWER FRAME	U	V	KEYWAY		
			LENGTH	WIDTH	DEPTH
5E, 5F	2 3/8	6 3/8	4	5/8	5/16
5G, 5H	2 7/8	6 5/8	5	3/4	3/8
6E	2 7/8	5 3/4	4	3/4	3/8

- NOTES:
- ALL DIMENSIONS IN INCHES.
 - DIMENSIONS MAY VARY ± 1/2".
 - NOT FOR CONSTRUCTION PURPOSES UNLESS CERTIFIED.
 - TWO (2) 1/2" NPT CONNECTIONS 180° APART, ON THE STUFFING BOX FOR LUBRICATION PURPOSES ARE FURNISHED AS STANDARD. ON PACKED PUMPS AN ALEMITE FITTING IS PROVIDED IN ONE TAP AND THE REMAINING TAP IS PLUGGED.
 - DISCHARGE POSITION 1 IS FURNISHED AS STANDARD UNLESS SPECIFIED.
 - SUCTION AND DISCHARGE FLANGES ARE AMERICAN STANDARD 125 LBS.
 - CONDUIT BOX IS SHOWN IS APPROXIMATE LOCATION. DIMENSIONS ARE NOT SPECIFIED AS THEY MAY VARY WITH EACH MOTOR MANUFACTURER.



(4) DRILLS ON DIA. FOR FOUNDATION BOLTS.

(2) HOLES (DRILL SUPPORT ON INSTALLATION)

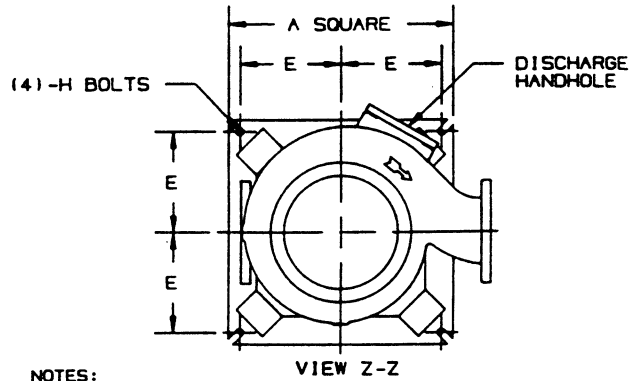
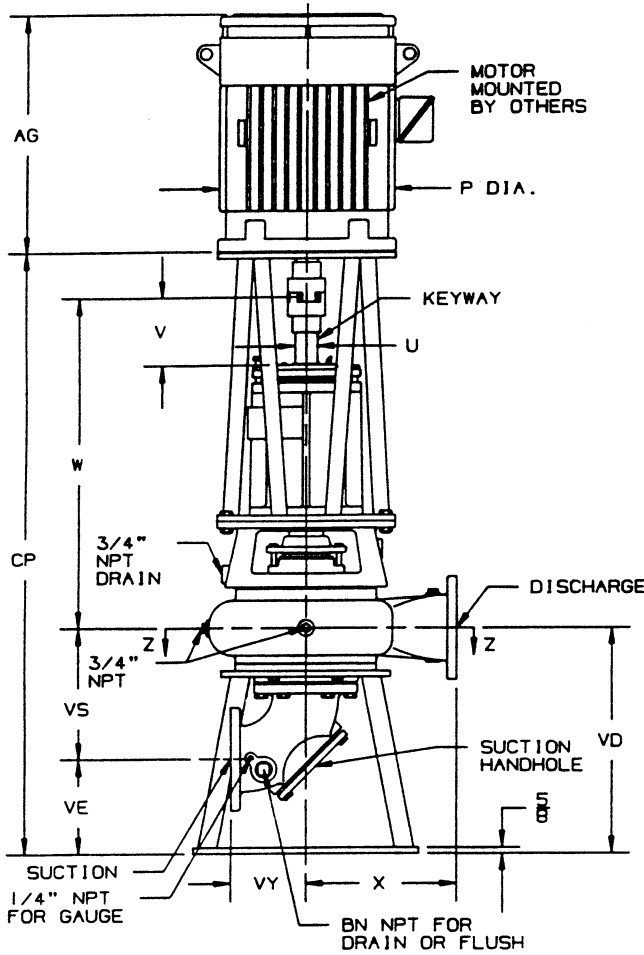


CASE BORE	12x12x22	12x14x22A	12x14x22A	12x14x22B	12x14x22B	14x14x22A
SUCTION						
DISCHARGE	12x	12x	12x	12x	12x	14x
POWER FRAME	6E	5G, 5H	6D	5G, 5H	6D	6E
A	37	37	37	37	37	37
E	17	17	17	17	17	17
H	7/8	7/8	7/8	7/8	7/8	7/8
HG	5/8	5/8	5/8	5/8	5/8	5/8
W	37 5/8	35 1/8	37 5/8	35 1/8	37 5/8	37 5/8
X	22 1/2	24	24	24	24	24
BN	1 1/2	2 1/2	2 1/2	2 1/2	2 1/2	2 1/2
CP	72 3/4	70 1/4	72 3/4	70 1/4	72 3/4	72 3/4
VD	35 1/8	35 1/8	35 1/8	35 1/8	35 1/8	35 1/8
VE	15 9/16	13 7/8	13 7/8	13 7/8	13 7/8	13 7/8
VS	19 9/16	21 1/4	21 1/4	21 1/4	21 1/4	21 1/4
VY	12	14	14	14	14	14
HANDHOLE DISCH.	5x7	5x7	5x7	5x7	5x7	5x7
HANDHOLE SUCT.	6	6	8	8	8	8

POWER FRAME	U	V	KEYWAY		
			LENGTH	WIDTH	DEPTH
5E, 5F	2 3/8	6 3/8	4	5/8	5/16
5G, 5H					
6D	2 7/8	6 5/8	5	3/4	3/8
6E	2 7/8	5 3/4	4	3/4	3/8

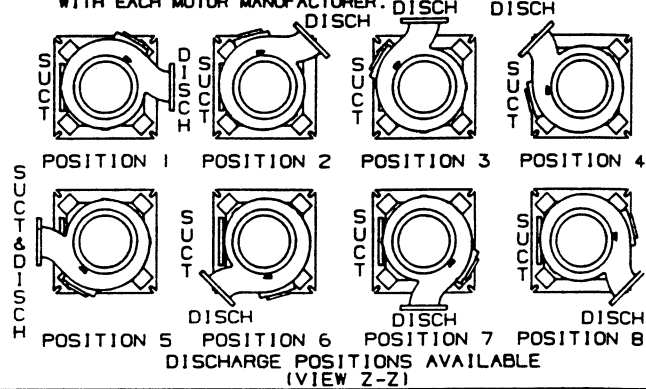
- NOTES:
1. ALL DIMENSIONS IN INCHES.
 2. DIMENSIONS MAY VARY ± 1/2".
 3. NOT FOR CONSTRUCTION PURPOSES UNLESS CERTIFIED.
 4. TWO (2) 1/2" NPT CONNECTIONS 180° APART, ON THE STUFFING BOX FOR LUBRICATION PURPOSES ARE FURNISHED AS STANDARD. ON PACKED PUMPS AN ALEMITE FITTING IS PROVIDED IN ONE TAP AND THE REMAINING TAP IS PLUGGED.
 5. DISCHARGE POSITION 1 IS FURNISHED AS STANDARD UNLESS SPECIFIED.
 6. SUCTION AND DISCHARGE FLANGES ARE AMERICAN STANDARD 125 LBS.
 7. CONDUIT BOX IS SHOWN IS APPROXIMATE LOCATION. DIMENSIONS ARE NOT SPECIFIED AS THEY MAY VARY WITH EACH MOTOR MANUFACTURER.

AURORA MODEL 613A PUMP



NOTES:

1. ALL DIMENSIONS IN INCHES.
2. DIMENSIONS MAY VARY $\pm 1/2"$.
3. NOT FOR CONSTRUCTION PURPOSES UNLESS CERTIFIED.
4. TWO (2) 1/2" NPT CONNECTIONS 180° APART, ON THE STUFFING BOX FOR LUBRICATION PURPOSES ARE FURNISHED AS STANDARD. ON PACKED PUMPS AN ALEMITE FITTING IS PROVIDED IN ONE TAP AND THE REMAINING TAP IS PLUGGED.
5. DISCHARGE POSITION 1 IS FURNISHED AS STANDARD UNLESS SPECIFIED.
6. SUCTION AND DISCHARGE FLANGES ARE AMERICAN STANDARD 125 LBS.
7. HEIGHT (AG) AND DIAMETERS (P) DIMENSIONS OF MOTOR WILL VARY BASED ON MAKE AND STYLE OF MOTOR. DIMENSIONS SHOWN REFLECT AURORA STANDARD MOTORS. SEE INDIVIDUAL MOTOR SUPPLIER DIMENSIONAL DATA SHEETS FOR YOUR APPLICATION. CONDUIT BOX IS SHOWN IN APPROXIMATE LOCATION. DIMENSIONS ARE NOT SPECIFIED AS THEY VARY WITH EACH MOTOR MANUFACTURER.



POWER FRAME	U	V	KEYWAY		
			LENGTH	WIDTH	DEPTH
4C, 4D	1 1/4	3 3/16	2	1/4	1/8
5E, 5F 5G, 5H	2 3/8	6 3/8	4	5/8	5/16
6D	2 7/8	6 5/8	5	3/4	3/8
6E	2 7/8	5 3/4	4	3/4	3/8

MOTOR FRAME	254HP TO 256HP	284HPH TO 286HPH	324HP TO 326HP	364HP TO 365HP	404HP TO 405HP	LARGER THAN 405HP
	P APPROX.	13	16	18	21	
AG APPROX.	20 21	22 23	25 26	25	28	

DISCH SUCT CASE BORE	POWER FRAME	A	BN	E	H	VY	W	X	CP	VD	VE	VS	HANDHOLE	
													DISCH.	SUCT.
6x6x12	4C, 4D	24	1 1/2	10 3/4	5/8	8	23 5/16	14	51 5/16	24 1/4	10 1/8	14 1/8	5x5	6
6x6x12	5E, 5F	24	1 1/2	10 3/4	5/8	8	34 3/16	14	64	24 1/4	10 1/8	14 1/8	5x5	6
6x6x12B	4C, 4D	24	1 1/2	10 3/4	5/8	8	23 7/16	16	51 5/16	24 1/8	10 1/8	14	5x5	6
6x6x12B	5E, 5F	24	1 1/2	10 3/4	5/8	8	34 5/16	16	64	24 1/8	10 1/8	14	5x5	6
6x8x15	5E, 5F	30	1 1/2	13 3/4	3/4	9	33 3/4	16	71 7/16	32 1/8	17	15 1/8	5x5	6
6x8x18	5E, 5F	30	1 1/2	13 3/4	3/4	9	34 1/16	18	72	32 3/8	17	15 3/8	5x5	6
8x8x15A	5E	30	1 1/2	13 3/4	3/4	9	34 1/8	19	72 1/16	32 3/8	14 1/4	18 1/8	5x7	6
8x10x18	5G, 5H	30	1 1/2	13 3/4	3/4	11	34 5/8	19	73 3/16	33	15 3/16	17 13/16	5x7	6
8x10x22	5G, 5H	37	1 1/2	17	7/8	11	34 5/8	22	74 11/16	34 1/2	16 5/8	17 7/8	5x7	6
10x10x15	5E, 5F	30	1 1/2	13 3/4	3/4	11	34 13/16	20	73 5/16	32 15/16	11 7/8	21 1/16	5x7	6
10x10x22	6E	37	1 1/2	17	7/8	11	37 1/8	22 1/2	77 1/16	34 1/2	16 5/8	17 7/8	5x7	6
10x12x22	5G, 5H	37	1 1/2	17	7/8	12	35 1/16	22 1/2	75 3/4	35 1/8	15 9/16	19 9/16	5x7	8
10x12x22	6D	37	1 1/2	17	7/8	12	37 9/16	22 1/2	78 1/8	35 1/8	15 9/16	19 9/16	5x7	8
12x12x22	6E	37	1 1/2	17	7/8	12	37 5/8	22 1/2	78 3/16	35 1/8	15 9/16	19 9/16	5x7	8
12x14x22A	5G, 5H	37	2 1/2	17	7/8	14	35 1/8	24	75 13/16	35 1/8	13 7/8	21 1/4	5x7	8
12x14x22A	6D	37	2 1/2	17	7/8	14	37 5/8	24	78 3/16	35 1/8	13 7/8	21 1/4	5x7	8
12x14x22B	5G, 5H	37	2 1/2	17	7/8	14	35 1/8	24	75 13/16	35 1/8	13 7/8	21 1/4	5x7	8
12x14x22B	6D	37	2 1/2	17	7/8	14	37 5/8	24	78 3/16	35 1/8	13 7/8	21 1/4	5x7	8
14x14x22A	6E	37	2 1/2	17	7/8	14	37 5/8	24	78 3/16	35 1/8	13 7/8	21 1/4	5x7	8

ADD 3/4" TO CP FOR PUMPS ON P.F. 4C, 4D WITH MOTOR FRAMES 284 HPH TO 324 HP.

AURORA MODEL 614A PUMP

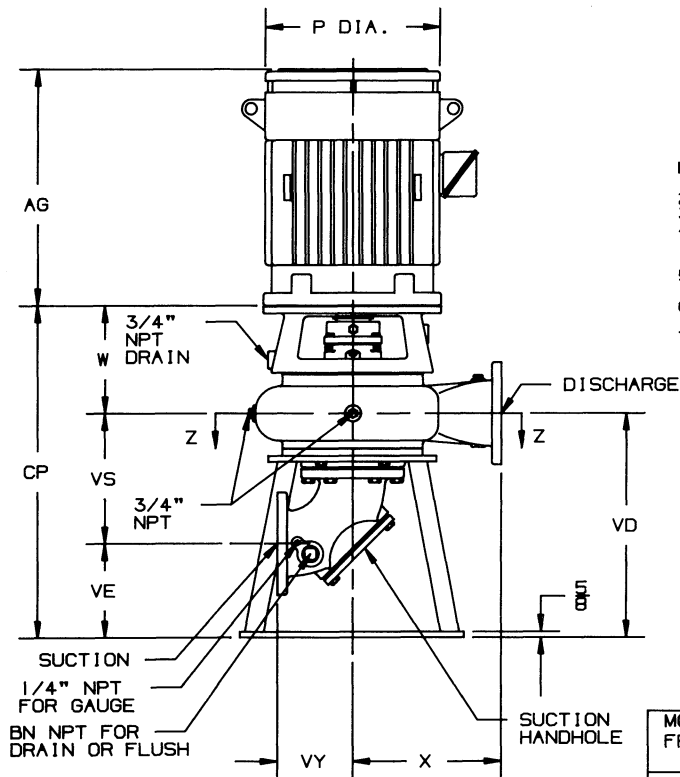
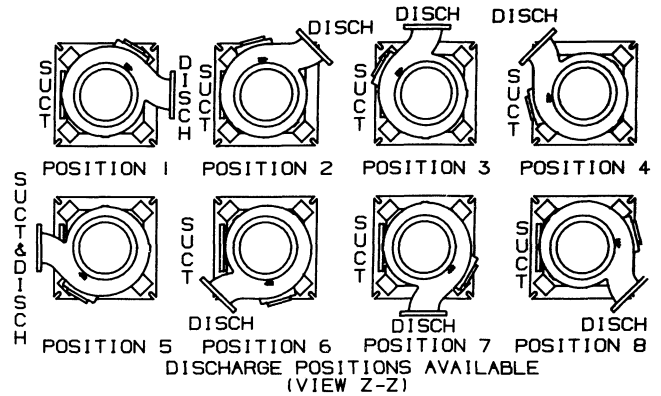
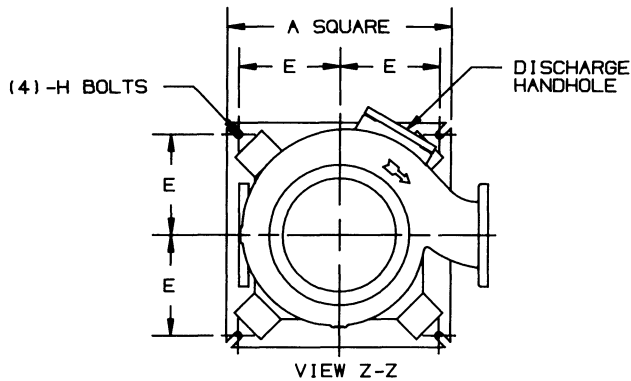
6", 8" & 10" PUMPS

SECTION 610 PAGE 211

DATED AUGUST 1990

SUPERSEDES PAGE 211

DATED NOVEMBER 1988



NOTES:

1. ALL DIMENSIONS IN INCHES.
2. DIMENSIONS MAY VARY $\pm 1/2"$.
3. NOT FOR CONSTRUCTION PURPOSES UNLESS CERTIFIED.
4. TWO (2) $1/2"$ NPT CONNECTIONS 180° APART, ON THE STUFFING BOX FOR LUBRICATION PURPOSES ARE FURNISHED AS STANDARD.
5. DISCHARGE POSITION 1 IS FURNISHED AS STANDARD UNLESS SPECIFIED.
6. SUCTION AND DISCHARGE FLANGES ARE AMERICAN STANDARD 125 LBS.
7. HEIGHT (AG) AND DIAMETERS (P) DIMENSIONS OF MOTOR WILL VARY BASED ON MAKE AND STYLE OF MOTOR. DIMENSIONS SHOWN REFLECT AURORA STANDARD MOTORS. SEE INDIVIDUAL MOTOR SUPPLIER DIMENSIONAL DATA SHEETS FOR YOUR APPLICATION. CONDUIT BOX IS SHOWN IN APPROXIMATE LOCATION. DIMENSIONS ARE NOT SPECIFIED AS THEY VARY WITH EACH MOTOR MANUFACTURER.

MOTOR FRAME	254TCV TO 256TCV	284TCV TO 286TCV	324TCV TO 326TCV	364TCV TO 365TCV	404TCV TO 405TCV	LARGER THAN 405TCV
P	13	16	18	21	22	REFER TO FACTORY
AG APPROX.	20 21	22 23	25 26	25	28	

DISCH SUCT CASE BORE	MOTOR SHAFT EXT. TYPE	A	BN	E	H	VY	W	X	CP	VD	VE	VS	HANDHOLE	
													DISCH.	SUCT.
6x6x12	4C, 4D	24	1 1/2	10 3/4	5/8	8	10 1/8	14	34 3/8	24 1/4	10 1/8	14 1/8	5x5	6
6x6x12	5E, 5F	24	1 1/2	10 3/4	5/8	8	11 3/16	14	35 7/16	24 1/4	10 1/8	14 1/8	5x5	6
6x6x12B	4C, 4D	24	1 1/2	10 3/4	5/8	8	10 1/4	16	34 3/8	24 1/8	10 1/8	14	5x5	6
6x6x12B	5E, 5F	24	1 1/2	10 3/4	5/8	8	11 5/16	16	35 7/16	24 1/8	10 1/8	14	5x5	6
6x8x15	5E, 5F	30	1 1/2	13 3/4	3/4	9	10 3/4	16	42 7/8	32 1/8	17	15 1/8	5x5	6
6x8x18	5E, 5F	30	1 1/2	13 3/4	3/4	9	11 1/16	18	43 7/16	32 3/8	17	15 3/8	5x5	6
8x8x15A	5E, 5F	30	1 1/2	13 3/4	3/4	9	11 1/8	19	43 1/2	32 3/8	14 1/4	18 1/8	5x7	6
10x10x15	5E, 5F	30	1 1/2	13 3/4	3/4	11	11 1/16	20	44 5/8	32 15/16	11 7/8	21 1/16	5x7	6