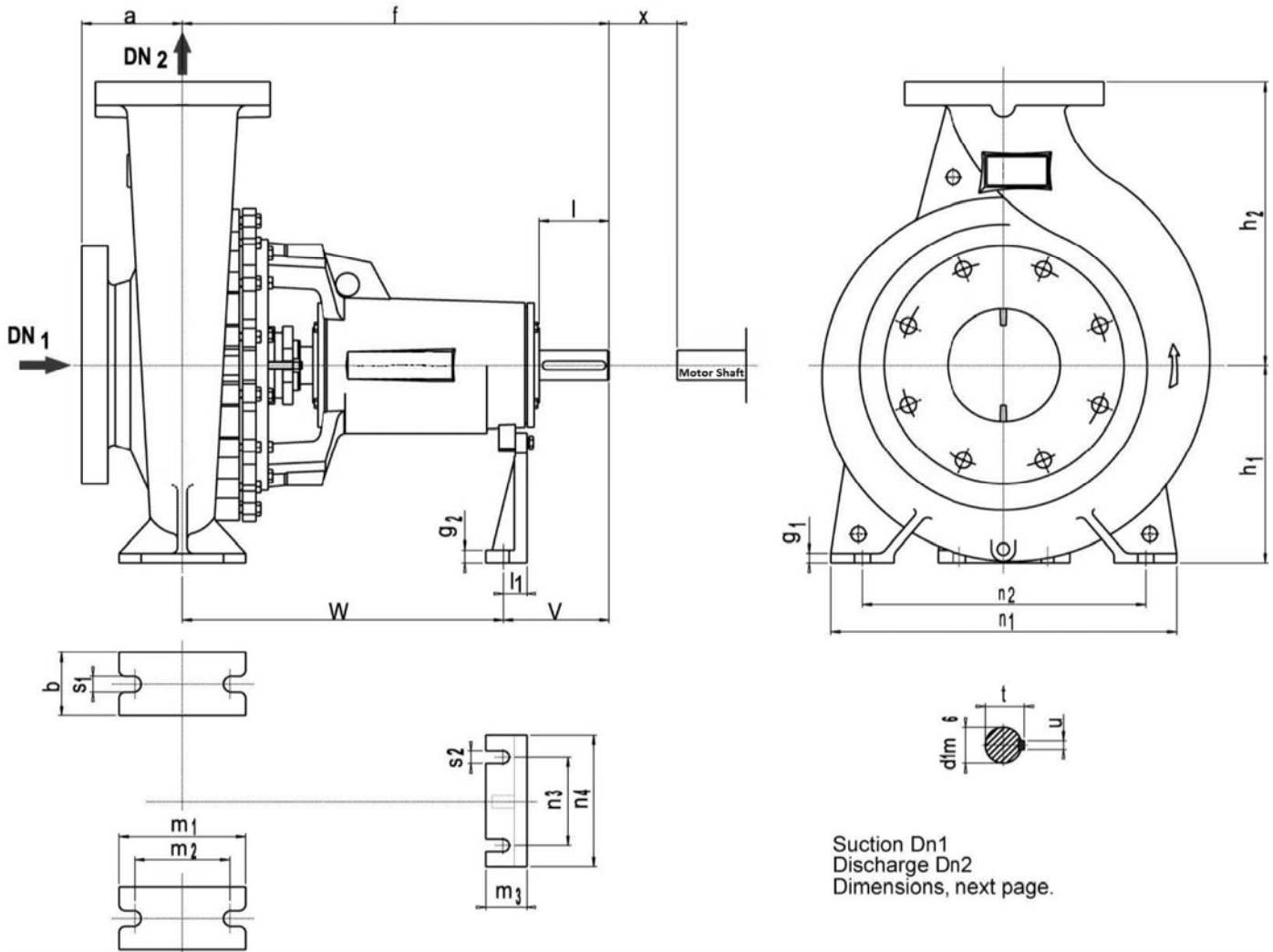


Dimensional Drawing



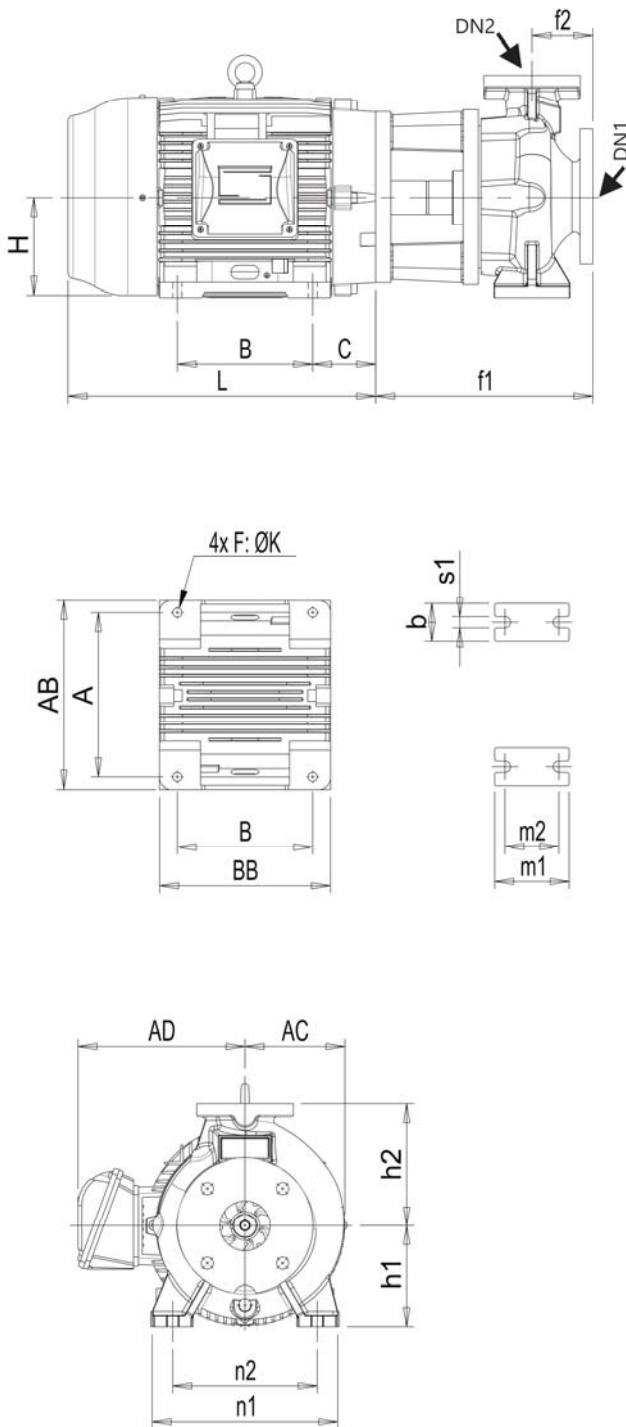
Suction Dn1  
 Discharge Dn2  
 Dimensions, next page.

Flange - ANSI B16.1 125 lb FF - All models except the following.  
 Flange - ANSI B16.1 250 lb FF - Models - 32-250.1, 32-250, 40-250,  
 50-250, 40-315, 50-315,  
 65-250, & 80-250

Dimensions in mm

Size	Pump Dimension								Base Dimensions										Shaft				WT. LBS																																	
	DN1	DN2	a	f	h1	h2	b	g1	g2	l1	m1	m2	m3	n1	n2	n3	n4	S1	S2	V	W	d1m6		l	t	u	x																													
25-150	32	25	73	397	112	160	50	15	6.4	41.4	100	70	66.4	190	140	110	152.4	14	14	100	297	24	50	26.9	8	100	73																													
25-200	40		90	160	175	240								190	90																																									
32-125.1	50	32	80	385	112	140	50	15	6.4	41.4	100	70	66.4	190	140	110	152.4	14	14	100	285	24	50	26.9	8	100	73																													
32-160.1					132	160								240	190												77																													
32-200.1					160	180								240	190												93																													
32-250.1			100	500	180	225	65	18	9.5	39.5	125	95	64.5	320	250						130	370	32	80	35.3	10	150																													
32-125			80	385	112	140	50	15	6.4	41.4	100	70	66.4	190	140						100	285	24	50	26.9	8	100	285	24	50	26.9	8	100	77																						
32-160					132	160								240	190																			73																						
32-200					160	180								240	190																			95																						
32-250					100	500								180	225																			65	18	9.5	39.5	125	95	64.5	320	250	130	370	32	80	35.3	10	152							
40-125					65	40								80	385																			112	140	50	15	6.4	41.4	100	70	66.4	210	160	110	152.4	14	14	100	285	24	50	26.9	8	100	86
40-160																																		132	160								240	190												95
40-200	160	180														265	212	110																																						
40-250	100	180	225	320			250	165																																																
40-315	125	500	200	250			65	18	9.5	39.5	125	95	64.5	345	280	130	370	32	80	35.3	10	163																																		
50-125	80	50	100	385	132	160	50	15	6.4	41.4	100	70	66.4	240	190	110	152.4	14	14	100	285	24	50	26.9	8	100	88																													
50-160					160	180								265	212												97																													
50-200					200	280								345	280												104																													
50-250			125	500	180	225	65	18	9.5	39.5	125	95	64.5	320	250						130	370	32	80	35.3		10	163	240	240	240	240	240																							
50-315					225	280								345	280																			240	190	320	250	345	280	130	370	32	80	35.3	10	163										
65-125	100	65	100	385	160	180	65	18	6.4	41.4	125	95	66.4	280	212	110	152.4	14	14	100	285	24	50	26.9	8	100	110																													
65-160					200	250								360	280												198																													
65-200					500	180								225	320												250	137																												
65-250			530	225	280	80	19	36.5	160	120	61.5	400	315	18	160						42	110	45.1	12	276		276	276	276	276	276	276	276	276																						
65-315																																			250	315	360	280	198																	
80-160	125	80	125	500	180	225	65	18	39.5	125	95	64.5	320	250	110	152.4	14	14	100	285	24	50	26.9	8	100	198																														
80-200					250	315							360	280												198																														
80-250					225	280							320	250												231																														
80-315					530	280							355	400												315	293																													
80-400					280	355							400	315												355																														
100-160			100	100	500	200	280	80	19	9.5	39.5	160	120	64.5						360	280	110	152.4	18		18	100	285	24	50	26.9	8	100	231																						
100-200																				18	320													250	345	280	243																			
100-250																				20	400													315	435	355	293																			
100-315																				18	320													250	345	280	231																			
100-400																				22	500													400	435	355	395																			
125-200	150	125	140	530	250	315	80	18	36.5	160	120	61.5	400	315	110	152.4	18	18	100	285	24	50	26.9	8	100	300																														
125-250					355	400							435	355												346																														
125-315					280	315							360	280												342																														
125-400					315	400							435	355												430																														
150-200					200	150							160	280												375	400	100	20	200	150	65	550	450	110	152.4	22	22	100	285	24	50	26.9	8	100	*										
150-250	400	450	500	400			428																																																	
150-315	670	315	450	500			547																																																	
150-400	315	450	500	400			617																																																	
150-500	180	375	500	28			736																																																	

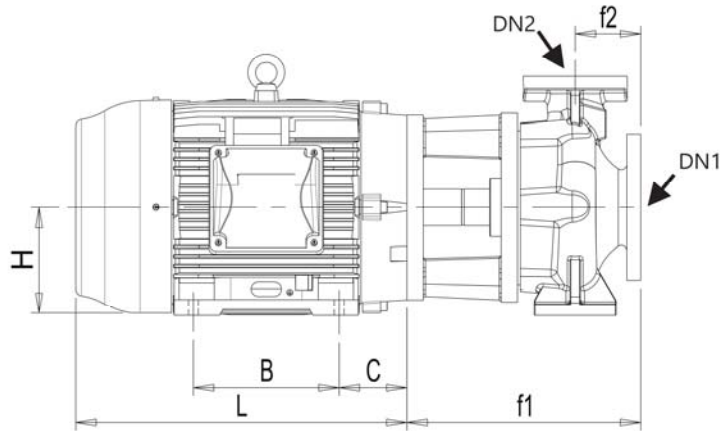
TABLE: Pump dimensions (mm)



Model	DN1	DN2	f1		f2	h2	h1	n1	n2	b	s1	m1	m2																			
			Up To 182/4JP	213/5JP & Above																												
			3ph to 5hp 1ph to 7.5hp	3ph to 75hp 1ph to 10hp																												
TH 25-150	32	25	275	---	73	160	112	190	140	50	14	100	70																			
TH 25-200	40		271	291	90	175	160	240	190																							
TH 32-125.1	50	32	262	---	80	140	112	190	140																							
TH 32-125			282	160		132	240	190																								
TH 32-160.1			264	284		180	160	240	190																							
TH 32-160			262	285		180	160	240	190																							
TH 32-200.1			262	285		180	160	240	190																							
TH 32-200			262	285		180	160	240	190																							
TH 32-250.1			289	309		100	225	180	320					250	65	125	95															
TH 32-250			289	309		100	225	180	320					250	65	125	95															
TH 40-125	65	40	262	282	80	140	112	210	160					50	14	100	70															
TH 40-160			264	286		160	132	240	190																							
TH 40-200			283	305		100	180	160	265	212																						
TH 40-250			284	308			225	180	320	250																						
TH 40-315			306	331		125	250	200	345	280	65	125	95																			
TH 50-125			80	50		295	306	100	160	132	240	190	50					14	100	70												
TH 50-160						286			180	160	265	212																				
TH 50-200						284			200	160	265	212																				
TH 50-250	309	125			225	180			320	250	65	18									160	120										
TH 50-315	307				280	225			345	280																						
TH 65-125	100	65			284	304			100	180													160	280	212	65	14	125	95			
TH 65-160					285	309				200													160	280	212							
TH 65-200					285	305				225				180	320	250																
TH 65-250			313	330	250	200	360	280		80				18	160	120																
TH 65-315			---	322	280	225	400	315																								
TH 80-160			80	80	307	330	125	225									180						320	250	65					14	125	95
TH 80-200					310	333		250									180						345	280								
TH 80-250					307	330		280					225				400	315														
TH 80-315	312	327			315	250		400	315																							
TH 80-400	326	326			355	280		435	355																							
TH 100-160	125	100			310	333		140	280		200	360	280				80	18	160	120												
TH 100-200					---	340			225		180	400	315																			
TH 100-250					---	337			315		250	400	315																			
TH 100-315			---	338	355	280	500		400		100	22	200								150											
TH 100-400			---	338	355	280	500		400		100	22	200								150											
TH 125-200			150	125	---	355	140		315	250	400	315	80	18	160	120																
TH 125-250					---	340			355	280	500	400									100	22	200	150								
TH 125-315					---	343			400	315	500	400									100	22	200	150								
TH 125-400	---	343			400	315		500	400	100	22	200									150											
TH 150-200	200	150			---	370		160	375	280	550	450									100	22	200	150								
TH 150-250					---	361			375	280	500	400																				

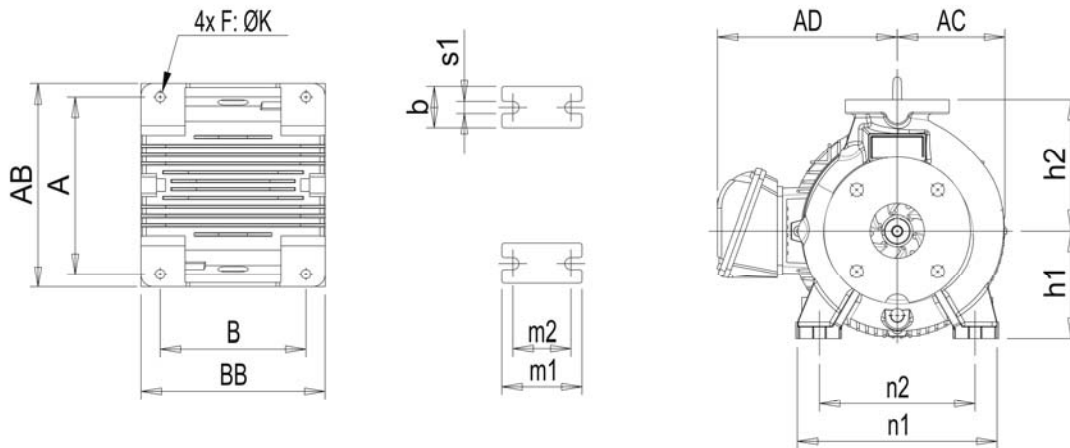
NEMA electric motors





HP	kW	THREE-PHASE		SINGLE-PHASE	
		2 Poles	4 Poles	2 Poles	4 Poles
1.50	1.10	143/5JP	143/5JP	*	145/JP
2.00	1.50	143/5JP	143/5JP	145/JP	*
3.00	2.20	182/4JP	182/4JP	145/JP	*
5.00	3.70	182/4JP	182/4JP	184/JP	184/JP
7.50	5.50	213/5JP	213/5JP	184/JP	215/JP
10.00	7.50	213/5JP	213/5JP	215/JP	215/JP
15.00	11.00	254/6JP	254/6JP		
20.00	15.00	254/6JP	254/6JP		
25.00	18.50	284/6JP	284/6JP		
30.00	22.00	284/6JP	284/6JP		
40.00	30.00	324/6JP	324/6JP		
50.00	37.00	324/6JP	324/6JP		
60.00	45.00	364/5JP	364/5JP		

NEMA Electric Motors



**TABLE: Three-phase electric motors dimensions (in and mm)**

Size	A		AB		AD		AC		B		BB		C		ØK		H		*L	
	in	mm	in	mm	in	mm	in	mm	in	mm	in	mm	in	mm	in	mm	in	mm	in	mm
143/5JP	5.50	139.70	6.46	164.01	6.26	159.00	3.52	89.50	5.00	127.00	6.14	156.01	2.25	57.15	0.34	8.74	3.50	88.90	11.42	289.99
182/4JP	7.50	190.50	8.66	219.99	7.57	192.15	4.37	111.00	5.50	139.70	6.97	177.01	2.75	69.85	0.41	10.31	4.50	114.30	13.16	334.16
213/5JP	8.50	215.90	9.76	248.01	8.58	218.01	5.33	135.50	7.00	177.80	8.86	224.99	3.50	88.90	0.41	10.31	5.25	133.35	16.13	409.80
254/6JP	10.00	254.00	12.13	308.00	10.48	266.27	6.48	164.50	10.00	254.00	11.73	297.99	4.25	107.95	0.53	13.49	6.25	158.75	20.98	532.79
284/6JP	11.00	279.40	13.78	350.01	11.07	281.25	7.09	180.00	11.00	279.40	13.07	332.00	4.75	120.65	0.53	13.49	7.00	177.80	23.45	595.50
324/6JP	12.50	317.50	15.16	384.99	12.58	319.41	7.91	201.00	12.00	304.80	14.57	370.00	5.25	133.35	0.66	16.69	8.00	203.20	25.89	657.63
364/5JP	14.02	356.01	17.17	435.99	16.02	406.81	8.96	227.51	12.24	311.00	16.22	411.99	8.93	226.75	0.66	16.76	9.00	228.60	28.58	725.96

NEMA Electric Motors

\* 'L' can vary depending on motor manufacture

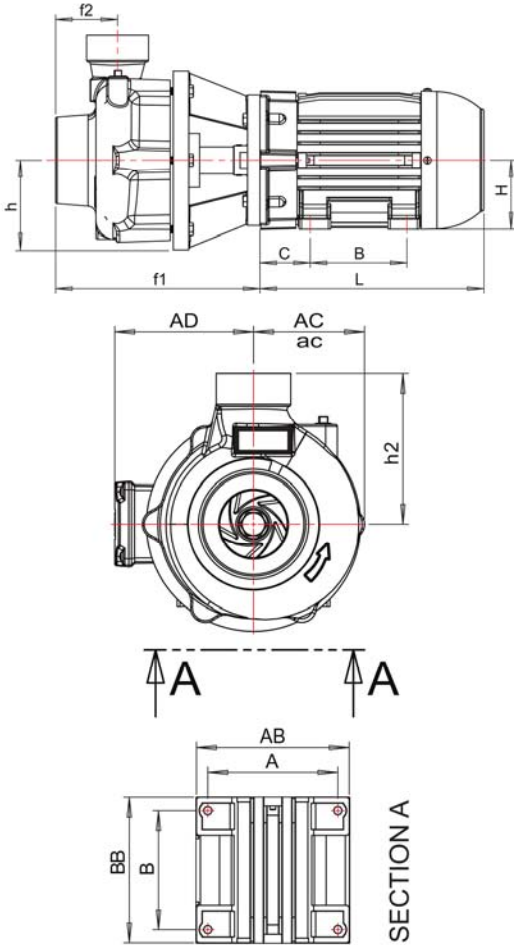
**TABLE: Single-phase electric motors dimensions (in and mm)**

Size	A		AB		AD		AC		B		BB		C		ØK		H		*L	
	in	mm	in	mm	in	mm	in	mm	in	mm	in	mm	in	mm	in	mm	in	mm	in	mm
145JP	5.50	139.70	6.46	164.01	6.97	176.99	3.52	89.50	5.00	127.00	6.14	156.01	2.56	65.02	0.34	8.74	3.50	88.90	12.20	309.88
184JP	7.50	190.50	8.66	219.99	7.84	199.01	4.37	111.00	5.50	139.70	6.97	177.01	2.76	70.00	0.41	10.31	4.50	114.30	13.11	332.99
215JP	8.50	215.90	9.76	248.01	8.07	205.00	5.32	135.00	7.00	177.80	8.86	224.99	3.50	88.90	0.41	10.31	5.25	133.35	16.14	410.01

NEMA Electric Motors

\* 'L' can vary depending on motor manufacture

**TABLE: Pump dimensions (in) and (mm)**



Model	Suc. BSP	Rec. BSP	f1				f2		h2		ac		h	
			up to 182/4		213/5 above		in	mm	in	mm	in	mm	in	mm
			in	mm	in	mm								
TH-25/150	1 1/4"	1"	10.83	275	-	-	2.87	73	6.30	160	4.53	115	4.53	115
TH-25/200	1 1/2"	1"	10.67	271	11.46	291	3.54	90	7.68	195	5.59	142	5.04	128
TH-32/125.1	2"	1 1/4"	10.31	262	-	-	3.15	80	6.30	160	4.65	118	4.53	115
TH-32/125	2"	1 1/4"			11.10	282								
TH-32/160.1	2"	1 1/4"	10.39	264	11.18	284	3.15	80	7.17	182	4.80	122	4.65	118
TH-32/160	2"	1 1/4"												
TH-32/200.1	2"	1 1/4"	10.35	263	11.14	283	3.15	80	7.95	202	5.59	142	5.24	133
TH-32/200	2"	1 1/4"												
TH-40/125	2 1/2"	1 1/2"	10.31	262	11.10	282	3.94	100	6.38	162	4.53	115	4.45	113
TH-40/160	2 1/2"	1 1/2"	10.39	264	11.18	284			7.09	180	5.04	128	4.76	121
TH-40/200	2 1/2"	1 1/2"	11.14	283	11.93	303	3.94	100	7.87	200	6.02	153	5.67	144
TH-50/125	3"	2"	11.26	286	12.05	306			7.09	180	4.88	124	4.53	115
TH-50/160	3"	2"					7.87	200	5.63	143	5.16	131		
TH-50/200	3"	2"	11.18	284	11.97	304	3.94	100	8.66	220	6.30	160	5.98	152
TH-65/125	4"	2 1/2"							7.87	200	5.71	145	5.08	129
TH-65/160	4"	2 1/2"	11.22	285	12.01	305	3.94	100	8.66	220	6.14	156	5.71	145
TH-65/200	4"	2 1/2"							9.65	245	6.93	176	6.46	164

NEMA Electric Motors

HP	kW	THREE-PHASE		SINGLE-PHASE	
		2 Poles	4 Poles	2 Poles	4 Poles
		Size	Size	Size	Size
1.50	1.10	143/5JP	143/5JP	*	145/JP
2.00	1.50	143/5JP	143/5JP	145/JP	*
3.00	2.20	182/4JP	182/4JP	145/JP	*
5.00	3.70	182/4JP	182/4JP	184/JP	184/JP
7.50	5.50	213/5JP	213/5JP	184/JP	215/JP
10.00	7.50	213/5JP	213/5JP	215/JP	215/JP
15.00	11.00	254/6JP	254/6JP		
20.00	15.00	254/6JP	254/6JP		
25.00	18.50	284/6JP	284/6JP		
30.00	22.00	284/6JP	284/6JP		
40.00	30.00	324/6JP	324/6JP		
50.00	37.00	324/6JP	324/6JP		
60.00	45.00	364/5JP	364/5JP		

NEMA Electric Motors

**TABLE: Three-phase electric motors dimensions (in and mm)**

Size	A		AB		AD		AC		B		BB		C		ØK		H		L	
	in	mm	in	mm	in	mm	in	mm	in	mm	in	mm	in	mm	in	mm	in	mm	in	mm
143/5JP	5.50	139.70	6.46	164.01	6.26	159.00	3.52	89.50	5.00	127.00	6.14	156.01	2.25	57.15	0.34	8.74	3.50	88.90	11.42	289.99
182/4JP	7.50	190.50	8.66	219.99	7.57	192.15	4.37	111.00	5.50	139.70	6.97	177.01	2.75	69.85	0.41	10.31	4.50	114.30	13.16	334.16
213/5JP	8.50	215.90	9.76	248.01	8.58	218.01	5.33	135.50	7.00	177.80	8.86	224.99	3.50	88.90	0.41	10.31	5.25	133.35	16.13	409.80
254/6JP	10.00	254.00	12.13	308.00	10.48	266.27	6.48	164.50	10.00	254.00	11.73	297.99	4.25	107.95	0.53	13.49	6.25	158.75	20.98	532.79
284/6JP	11.00	279.40	13.78	350.01	11.07	281.25	7.09	180.00	11.00	279.40	13.07	332.00	4.75	120.65	0.53	13.49	7.00	177.80	23.45	595.50
324/6JP	12.50	317.50	15.16	384.99	12.58	319.41	7.91	201.00	12.00	304.80	14.57	370.00	5.25	133.35	0.66	16.69	8.00	203.20	25.89	657.63
364/5JP	14.02	356.01	17.17	435.99	16.02	406.81	8.96	227.51	12.24	311.00	16.22	411.99	8.93	226.75	0.66	16.76	9.00	228.60	28.58	725.96

NEMA Electric Motors

\* 'L' can vary depending on motor manufacture

**TABLE: Single-phase electric motors dimensions (in and mm)**

Size	A		AB		AD		AC		B		BB		C		ØK		H		L	
	in	mm	in	mm	in	mm	in	mm	in	mm	in	mm	in	mm	in	mm	in	mm	in	mm
145JP	5.50	139.70	6.46	164.01	6.97	176.99	3.52	89.50	5.00	127.00	6.14	156.01	2.56	65.02	0.34	8.74	3.50	88.90	12.20	309.88
184JP	7.50	190.50	8.66	219.99	7.84	199.01	4.37	111.00	5.50	139.70	6.97	177.01	2.76	70.00	0.41	10.31	4.50	114.30	13.11	332.99
215JP	8.50	215.90	9.76	248.01	8.07	205.00	5.32	135.00	7.00	177.80	8.86	224.99	3.50	88.90	0.41	10.31	5.25	133.35	16.14	410.01

NEMA Electric Motors

\* 'L' can vary depending on motor manufacture

